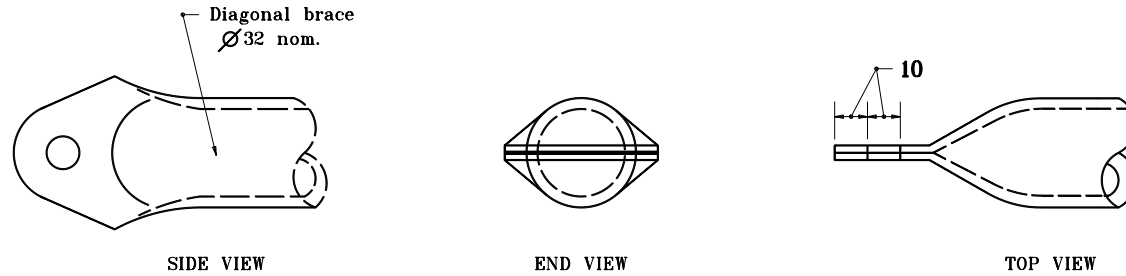
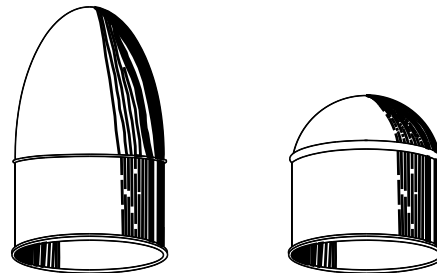


**STANDARD METHOD**



**ALTERNATE METHOD**

**DIAGONAL BRACE CONNECTION**



**TYPICAL CAPS FOR TUBULAR POSTS**

All dimensions are in mm unless otherwise specified.

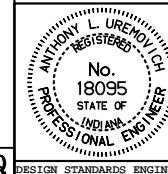
INDIANA DEPARTMENT OF TRANSPORTATION

**BRACE CONNECTIONS**

**AND POST CAPS**

APRIL 1995

STANDARD DRAWING NO. **603-FFTF-04**



/s/ Anthony L. Uremovich 4-03-95  
DESIGN STANDARDS ENGINEER DATE

/s/ Donald W. Lucas 4-03-95  
CHIEF HIGHWAY ENGINEER DATE

Source Sheet: **MQ**