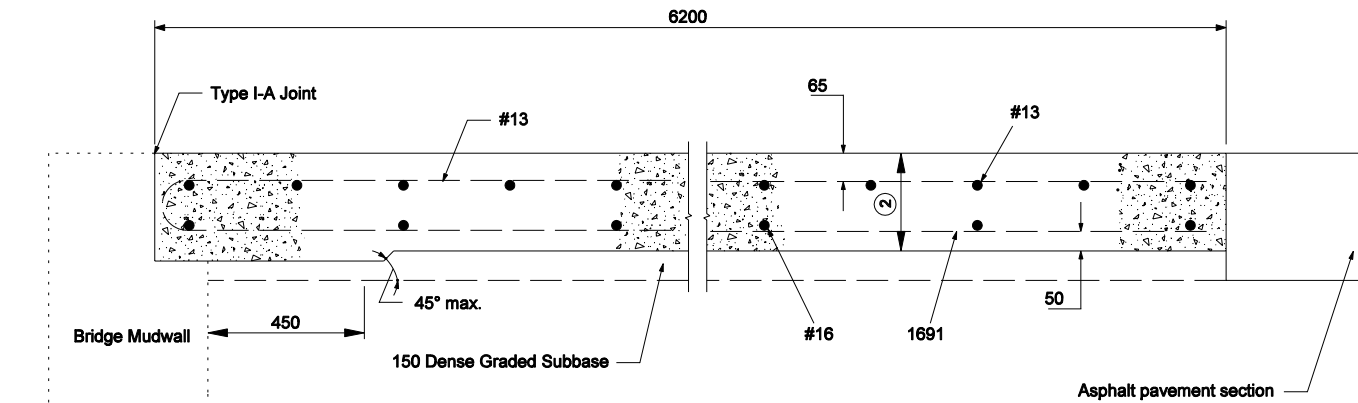


NOTES

1. For reinforcement details, see Standard Drawing 609-RCBA-03 for square RCBA's and Standard Drawing 609-RCBA-04 for skewed RCBA's.
- ② 250 if design year AADT < 1000
300 if design year AADT ≥ 1000
3. All reinforcing bars shall be epoxy coated.
4. See Standard Drawings 609-RCBA-07 and 609-BRJT-01 for details of Type I-A Joint.

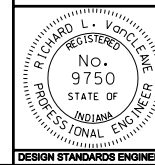


All Dimensions are in mm unless otherwise specified

INDIANA DEPARTMENT OF TRANSPORTATION

**REINFORCED CONCRETE
BRIDGE APPROACH FOR USE
WITH ASPHALT PAVT.
SEPTEMBER 2005**

STANDARD DRAWING NO. 609-RCBA-01



/s/ Richard L. VanCleave 9-01-05
DESIGN STANDARDS ENGINEER DATE

/s/ Richard K. Smutzer 9-01-05
CHIEF HIGHWAY ENGINEER DATE

DESIGN STANDARDS ENGINEER