

Type K $6\text{ m} \leq W < 8\text{ m}$

$L = 18\text{ m}$

Type L $8\text{ m} \leq W < 9\text{ m}$

PLAN

NOTES :

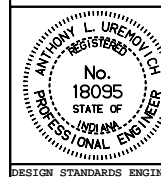
- See Standard Drawing 610-PRCO-01 for Legend and Section A-A.

All dimensions are in mm unless otherwise specified.

INDIANA DEPARTMENT OF TRANSPORTATION

**PUBLIC ROAD CROSSOVERS
TYPE K & L
MAY 2000**

STANDARD DRAWING NO. **610-PRCO-02**



/s/ Anthony L. Uremovich 5-01-00
DESIGN STANDARDS ENGINEER DATE

/s/ Firooz Zandi 5-01-00
CHIEF HIGHWAY ENGINEER DATE

DESIGN STANDARDS ENGINEER