

TYPE OF ROADWAY	INTERSTATE AND DIVIDED HIGHWAY WITH SHOULDER, RURAL & URBAN	DIVIDED HIGHWAY WITH CURB, RURAL & URBAN	NON-DIVIDED HIGHWAY, RURAL OR CITY STREET	NON-DIVIDED HIGHWAY, URBAN
CLEARANCE				
VERTICAL: EDGE OF TRAVELED WAY PAVEMENT TO BOTTOM OF SIGN OR SIGNS	2.1 m TO 2.3 m ①	2.1 m TO 2.3 m ②	1.5 m TO 1.7 m ④, ②	2.1 m TO 2.3 m ②
HORIZONTAL: EDGE OF TRAVELED WAY PAVEMENT TO EDGE OF SIGN OR SIGNS	3.7m min. or 1.8m min. from the shoulder, whichever is greater	1.8m min. ③	3.7m min. or 1.8m min. from the shoulder, whichever is greater	3.7m min. or 1.8m min. from the shoulder, whichever is greater ③

NOTES:

- ① If a secondary sign is mounted below another sign, the secondary sign shall be installed at least 1.5m above the level of the pavement edge.
- ② The height to the bottom of a secondary sign mounted below another sign may be 0.3m less than the height specified above.
- ③ In urban areas where lateral offsets are limited, a minimum lateral offset of 0.6m may be used. A minimum offset of 0.3m from the face of the curb may be used in urban areas where sidewalk width is limited or where existing poles are close to the curb.
- ④ Where parking or pedestrian movements occur on an expected recurring basis, the clearance to the bottom of the sign shall be at least 2.1m.

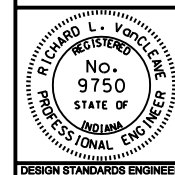
All Dimension are in mm unless otherwise specified

INDIANA DEPARTMENT OF TRANSPORTATION

**HORIZONTAL AND VERTICAL
SHEET SIGN CLEARANCE**

SEPTEMBER 2003

STANDARD DRAWING NO. 802-SNPL-02



/s/ Richard L. VanCleave 9-02-03
DESIGN STANDARDS ENGINEER DATE

/s/ Richard K. Smutzer 9-02-03
CHIEF HIGHWAY ENGINEER DATE

DESIGN STANDARDS ENGINEER