

**ALTERNATIVE**  
 32 x 115 square plate tapped  
 & welded to anchor bolt

**SECTION A-A**

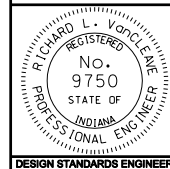
All Dimension are in mm unless otherwise specified

INDIANA DEPARTMENT OF TRANSPORTATION

**ANCHOR BOLT DETAIL FOR  
 SIGNAL STEEL STRAIN POLES**

MARCH 2004

STANDARD DRAWING NO. 805-SGSP-05



/s/ Richard L. VanCleave 3/01/04  
 DESIGN STANDARDS ENGINEER DATE

/s/ Richard K. Smutzer 3/01/04  
 CHIEF HIGHWAY ENGINEER DATE

DESIGN STANDARDS ENGINEER