

CHANNEL MOUNT

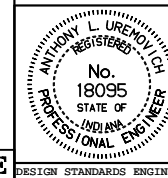
All dimensions are in mm unless otherwise specified.

INDIANA DEPARTMENT OF TRANSPORTATION

**LIGHTNING ROD
TYPICAL DETAILS**

MARCH 1995

STANDARD DRAWING NO. 807-LTLR-04



/s/ Anthony L. Uremovich 3-01-95
DESIGN STANDARDS ENGINEER DATE

/s/ Donald W. Lucas 3-01-95
CHIEF HIGHWAY ENGINEER DATE

Source Sheet: NONE