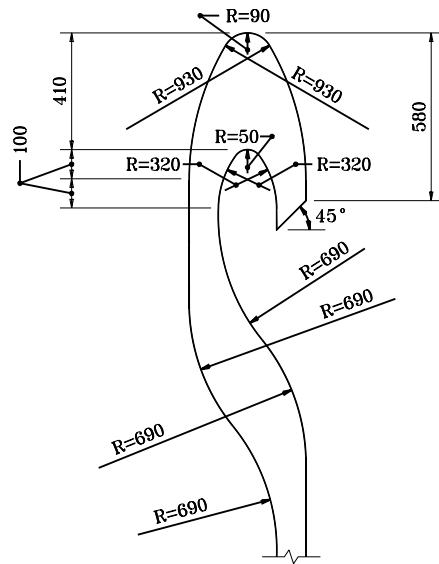
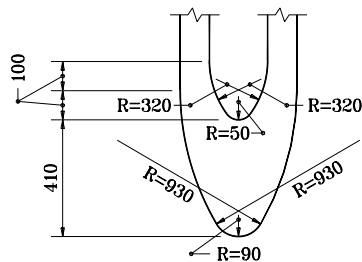


**GENERAL NOTES**

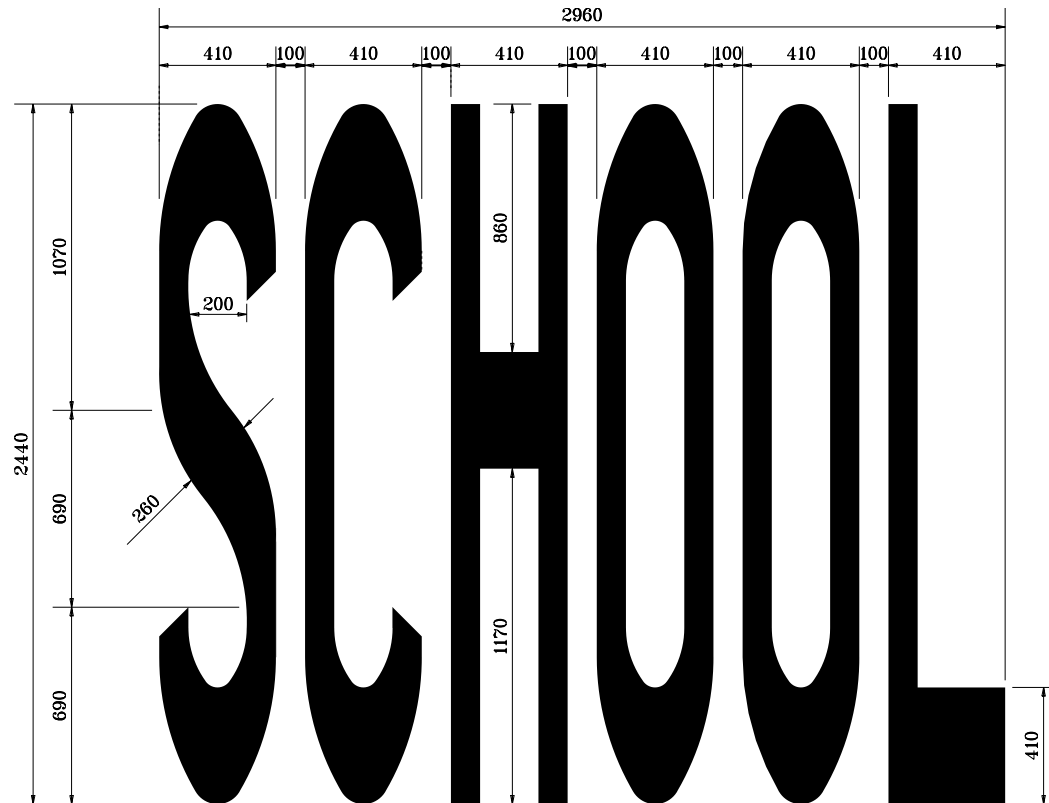
1. Horizontal strokes are 410 mm wide.  
Vertical strokes are 100 mm wide.



**DETAILS FOR "C,G,S"**



**DETAILS FOR "O"**



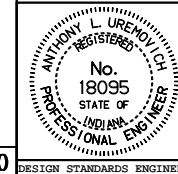
All dimensions are in mm unless otherwise specified.

INDIANA DEPARTMENT OF TRANSPORTATION

**TRANSVERSE MARKINGS**

MARCH 1995

STANDARD DRAWING NO. 808-MKPM-04



/s/ Anthony L. Uremovich 3-01-95  
DESIGN STANDARDS ENGINEER DATE

/s/ Donald W. Lucas 3-01-95  
CHIEF HIGHWAY ENGINEER DATE

Source Sheet: MT20