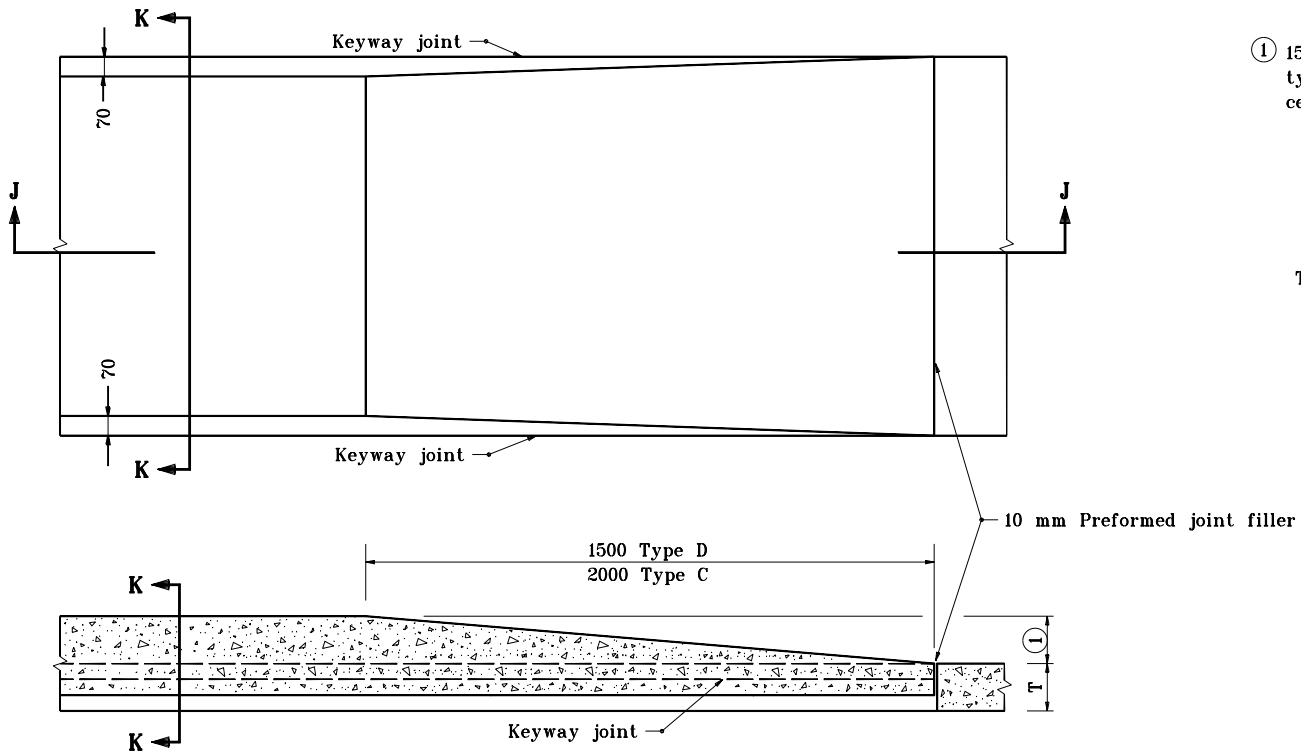


GENERAL NOTES

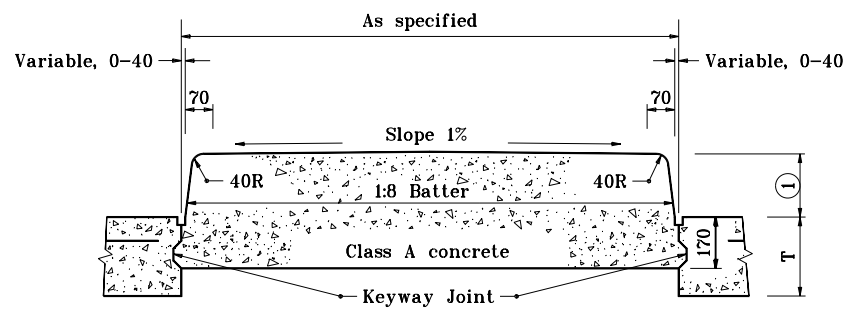
- ① 150 for concrete center curb, type D and 200 for concrete center curb, type C.

LEGEND

T = Normal pavement depth



SECTION J-J

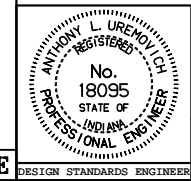


SECTION K-K

All dimensions are in mm unless otherwise specified.

INDIANA DEPARTMENT OF TRANSPORTATION
CONCRETE CENTER CURBS
TYPE C & D
 APRIL 1995

STANDARD DRAWING NO. **605-CNCC-03**



/s/ Anthony L. Uremovich 4-03-95
 DESIGN STANDARDS ENGINEER DATE

/s/ Donald W. Lucas 4-03-95
 CHIEF HIGHWAY ENGINEER DATE

Source Sheet: **ME**