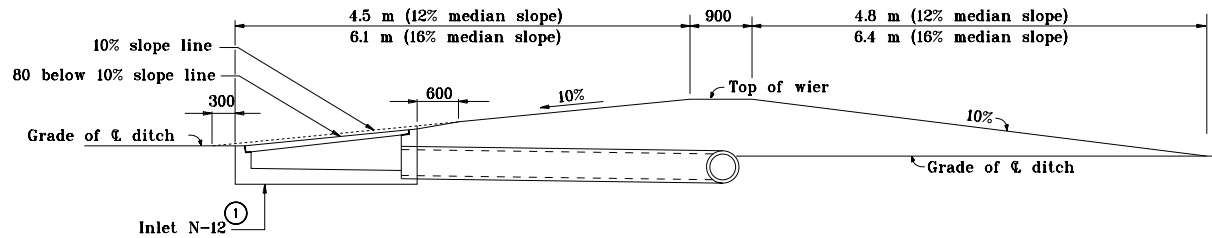
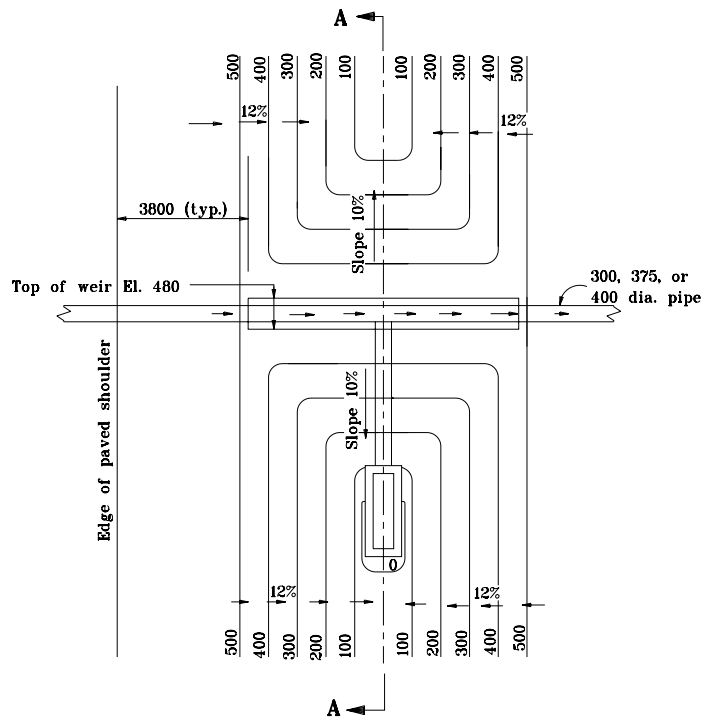


GENERAL NOTES:

- ① See Standard Drawing 720-INST-08 for inlet type N-12 details.
- 2. Contours and top of weir elevation shown in Section A-A are relative to the ditch grade.
- 3. The type N-12 inlet may be placed at the cross pipe structure to eliminate the longitudinal pipe which connects the inlet to the cross pipe.

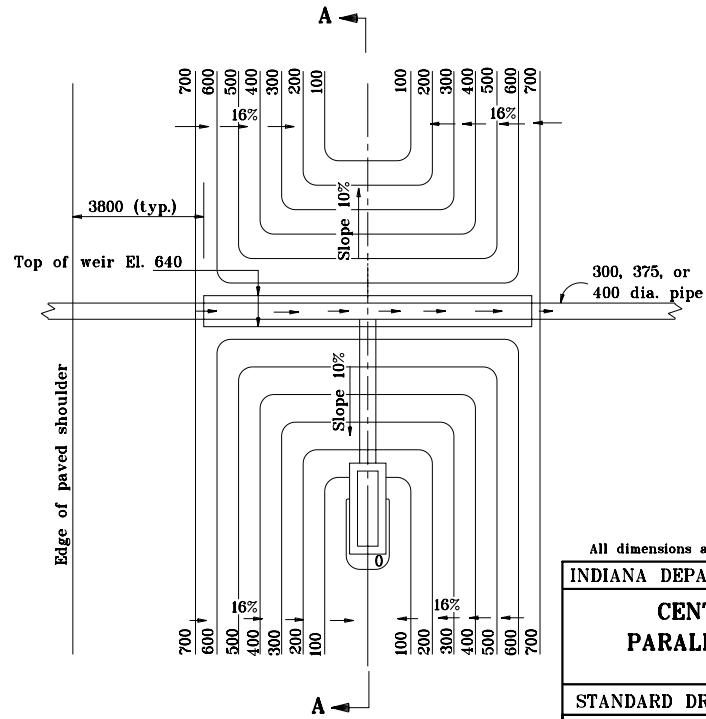


SECTION A-A



PLAN

12% MEDIAN SLOPE



PLAN

16% MEDIAN SLOPE

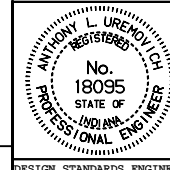
Source Sheet: MSI

All dimensions are in mm unless otherwise specified.

INDIANA DEPARTMENT OF TRANSPORTATION

**CENTER DITCH INLET
PARALLEL TO ϕ ROADWAY
MAY 1998**

STANDARD DRAWING NO. 617-CDIN-01



/s/ Anthony L. Uremovich 5-01-98
DESIGN STANDARDS ENGINEER DATE

/s/ Donald W. Lucas 5-01-98
CHIEF HIGHWAY ENGINEER DATE

DESIGN STANDARDS ENGINEER