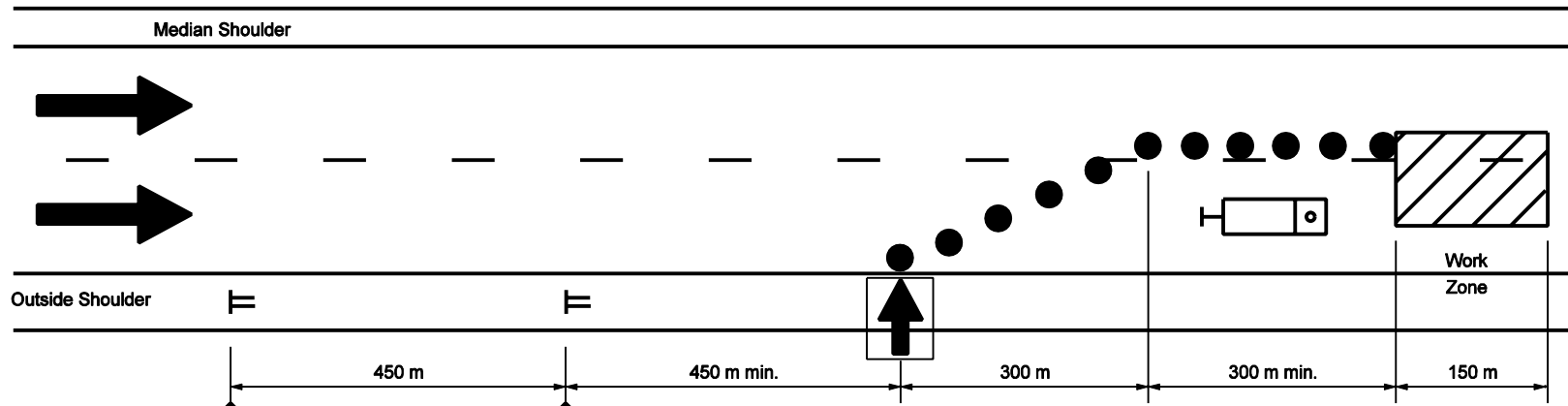
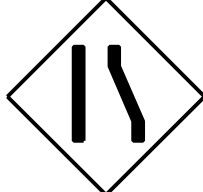


MULTI-LANE DIVIDED HIGHWAY



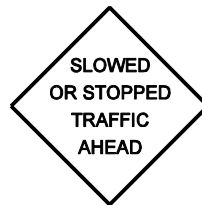
XW20-5 (R)
(R or L)



XW4-2 (R)
(R or L)

GENERAL NOTES

1. Distances shown are approximate and may be adjusted as directed.
2. Strobe lights will be required on all vehicles.
3. See Standard Drawing 801-TCDV-01 for channelizing devices
4. Lane closure length shall be a maximum of 5 km as directed by Engineer to meet field conditions.
5. See Standard Drawing 801-TCDV-05 for sign mounting.
6. See Standard Drawing 801-TCDV-05 for sign mounting.



XW103-1
Optional sign to be placed when directed.

LEGEND

Flashing Arrow Sign

Truck with truck mounted attenuator
(24,000 GVW required)

Channelizing device

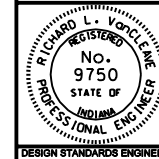
All Dimensions are in mm unless otherwise specified

INDIANA DEPARTMENT OF TRANSPORTATION

**MAINTENANCE OF TRAFFIC FOR
RPM CASTING INSTALLATION**

SEPTEMBER 2002

STANDARD DRAWING NO. 801-TCTC-06



/s/ Richard L. VanCleave 9-03-02
DESIGN STANDARDS ENGINEER DATE

/s/ Richard K. Smutzer 9-03-02
CHIEF HIGHWAY ENGINEER DATE

DESIGN STANDARDS ENGINEER