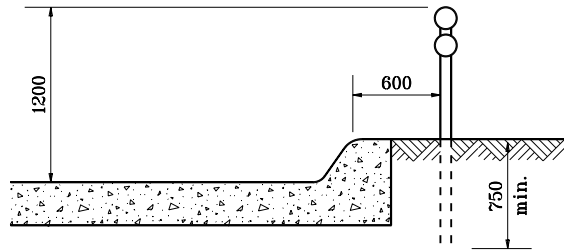
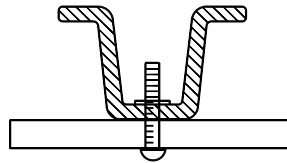


**GENERAL NOTES**

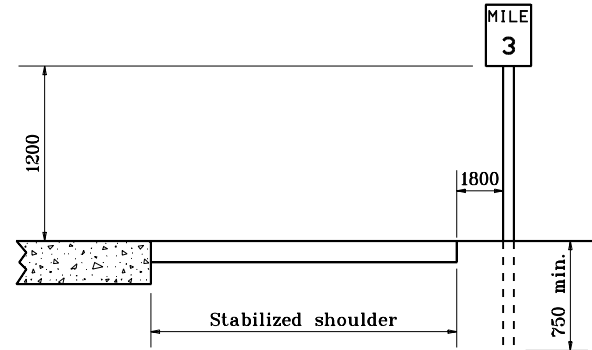
1. Post to be type A flange posts.
2. Mileposts shall be installed in accordance with Interstate Sign Manual.



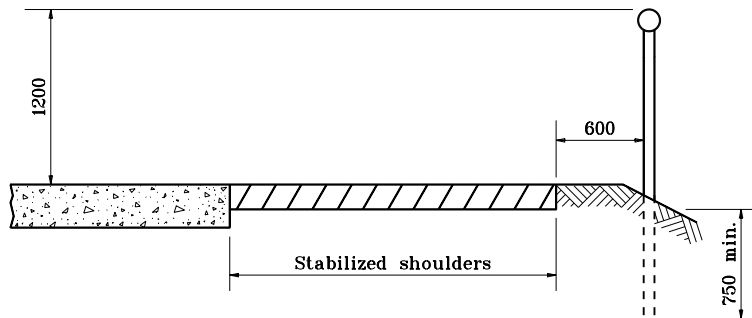
**UNMOUNTABLE CURB SECTION**



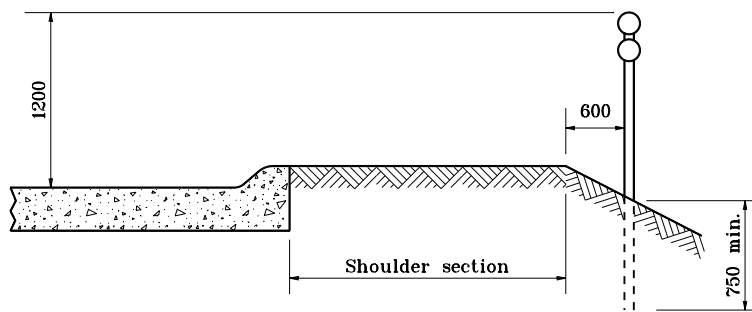
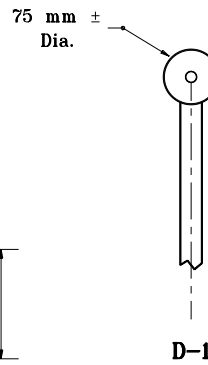
**MOUNTING DETAIL**



**TYPICAL MILE or REFERENCE POST**



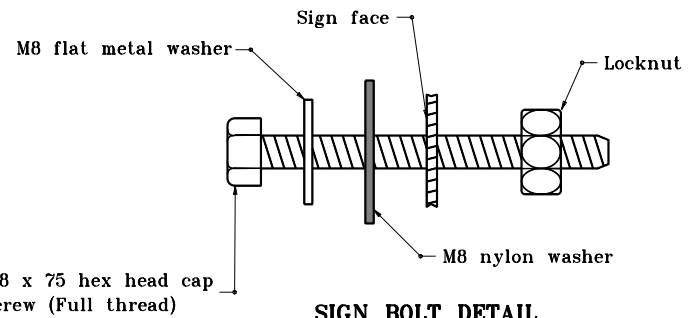
**SHOULDER SECTION**



**MOUNTABLE CURB SECTION**



**DELINEATOR DETAILS**



**SIGN BOLT DETAIL**

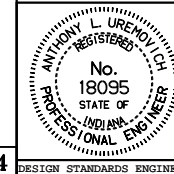
All dimensions are in mm unless otherwise specified.

INDIANA DEPARTMENT OF TRANSPORTATION

**MISC. SIGN DETAILS**

MARCH 1995

STANDARD DRAWING NO. 802-SNGS-07



/s/ Anthony L. Uremovich 3-01-95  
DESIGN STANDARDS ENGINEER DATE

/s/ Donald W. Lucas 3-01-95  
CHIEF HIGHWAY ENGINEER DATE

Source Sheet: MT4