



Monthly Financial Review

Division of Family Resources

January 2009

State of Indiana
Mitchell E. Daniels, Jr.
Governor

**Family and Social Services
Administration**
Anne Murphy
Secretary

Division of Family Resources

Cathy Boggs
Director

State of Indiana
Published
February 2009



Monthly Financial Review

Division of Family Resources

Division of Family Resources

January-09

Numbers Illustrated in Thousands

Expenditures

Federal Child Care Development
 TANF Assistance
 County Administration
 Indiana Client Eligibility System (ICES)
 TANF Impact
 Food Stamp IMPACT
 DFR Administration Central Office
 Electronic Benefits Transfer (EBT)
 Domestic Violence Prevention & Treatment (DVPT)
 Federal Family Violence Prevention Fund (FFV)
 Burials
 School Age Child Care (SACC)
 Head Start Partnership Coordination
 Commission on Social Status of Black Males
 Child Care Fees and Fines

	SFY 2009 Year To Date			SFY 2009			
	Actual	Actual	Budget	Variance	Forecast	Budget	Variance
Federal Child Care Development	13,808	107,489	113,790	6,301	184,267	212,179	27,913
TANF Assistance	8,918	63,139	65,011	1,872	108,239	114,605	6,366
County Administration	17,935	100,415	107,644	7,229	161,745	184,533	22,787
Indiana Client Eligibility System (ICES)	1,785	6,924	7,330	406	12,616	15,492	2,876
TANF Impact	124	1,886	4,796	2,909	12,919	5,012	(7,907)
Food Stamp IMPACT	19	989	3,734	2,745	12,405	2,368	(10,037)
DFR Administration Central Office	695	5,149	5,208	59	8,827	7,291	(1,536)
Electronic Benefits Transfer (EBT)	288	1,756	2,052	296	3,010	5,015	2,004
Domestic Violence Prevention & Treatment (DVPT)	183	1,985	1,921	(64)	3,403	3,006	(397)
Federal Family Violence Prevention Fund (FFV)	150	1,012	1,070	58	1,734	1,910	176
Burials	203	945	783	(162)	1,620	1,343	(278)
School Age Child Care (SACC)	93	508	487	(21)	872	950	78
Head Start Partnership Coordination	14	109	131	22	219	235	16
Commission on Social Status of Black Males	11	83	90	7	143	155	12
Child Care Fees and Fines	1	21	29	8	36	50	14
Total - Expense	44,228	292,412	314,076	21,664	512,055	554,143	42,088



Monthly Financial Review

Division of Family Resources

Federal Child Care Development

January-09

Numbers Illustrated in Thousands

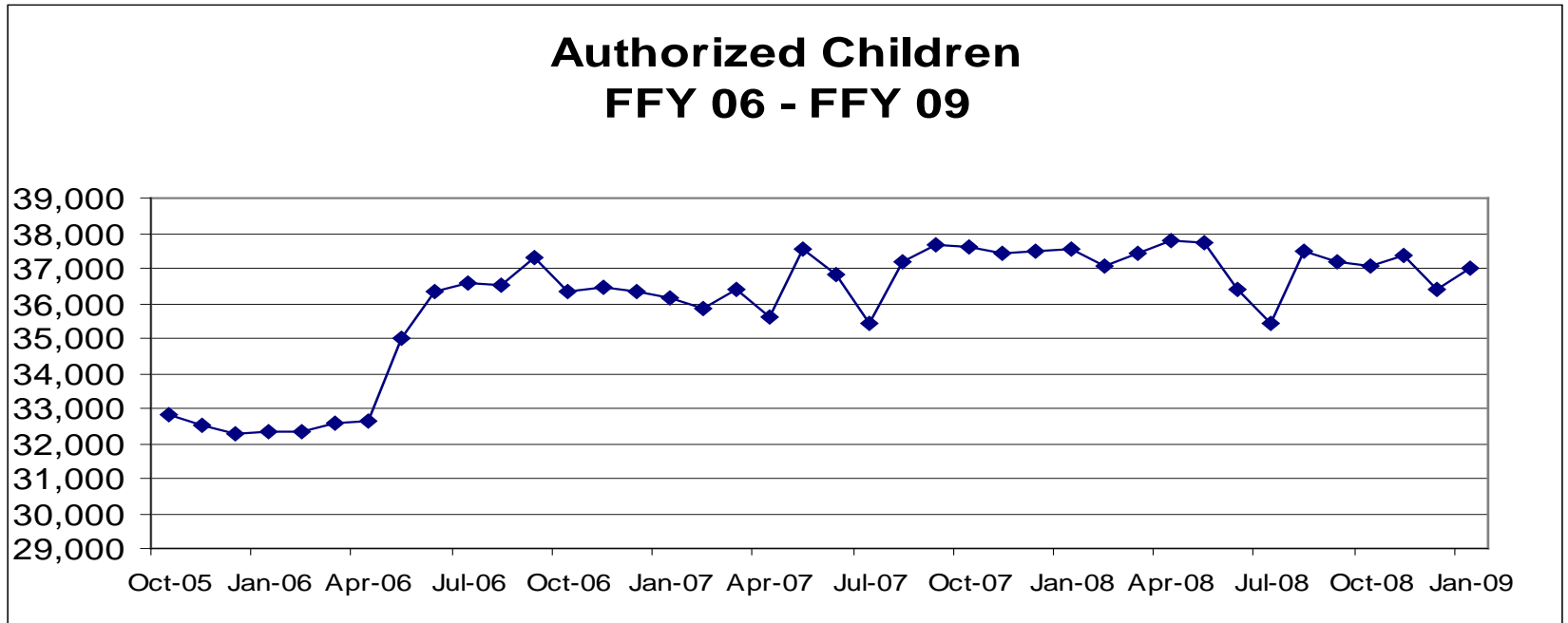
Expenditures

- .1 Salaries, Wages & Fringe Benefits**
- .2 Communications**
- .3 Consulting/Outsourced Contracts**
 - ACS Contract
 - IACCRR
 - IN Assoc Ed Young Children
 - TCC
 - Other Contracts
- .4 Supplies/Printing**
- .5 Equipment/Furniture**
- .7 Program Admin./Direct Service Contracts**
 - Program Administration
 - Intake Fees (Eligibility)
 - Direct Services
- .8 In State Travel**
- .9 Out of State Travel**
- Total - Expenditures**

	Current	FFY 2009 Year To Date		Variance	FFY 2009		Variance
		Actual Spent	Budget		Forecast	Budget	
.1 Salaries, Wages & Fringe Benefits	262	1,971	2,025	55	3,378	3,530	152
.2 Communications	19	142	128	(14)	243	157	(86)
.3 Consulting/Outsourced Contracts	1,822	10,692	11,269	578	18,329	20,991	2,663
ACS Contract	589	2,355	2,205	(150)	4,037	3,644	(393)
IACCRR	609	3,976	3,936	(41)	6,816	7,895	1,079
IN Assoc Ed Young Children	401	2,079	2,026	(53)	3,564	4,147	583
TCC	388	1,826	1,876	50	3,129	3,827	697
Other Contracts	(165)	456	1,226	770	782	1,479	697
.4 Supplies/Printing	3	39	49	11	67	116	50
.5 Equipment/Furniture	51	147	92	(56)	252	132	(121)
.7 Program Admin./Direct Service Contracts	11,637	94,351	100,065	5,714	161,745	186,973	25,227
Program Administration	1	531	624	92	911	812	(99)
Intake Fees (Eligibility)	347	2,411	2,635	224	4,133	5,463	1,330
Direct Services	11,290	91,409	96,807	5,398	156,701	180,697	23,996
.8 In State Travel	15	139	153	13	239	275	36
.9 Out of State Travel	0	8	8	0	14	5	(9)
Total - Expenditures	13,808	107,489	113,790	6,301	184,267	212,179	27,913

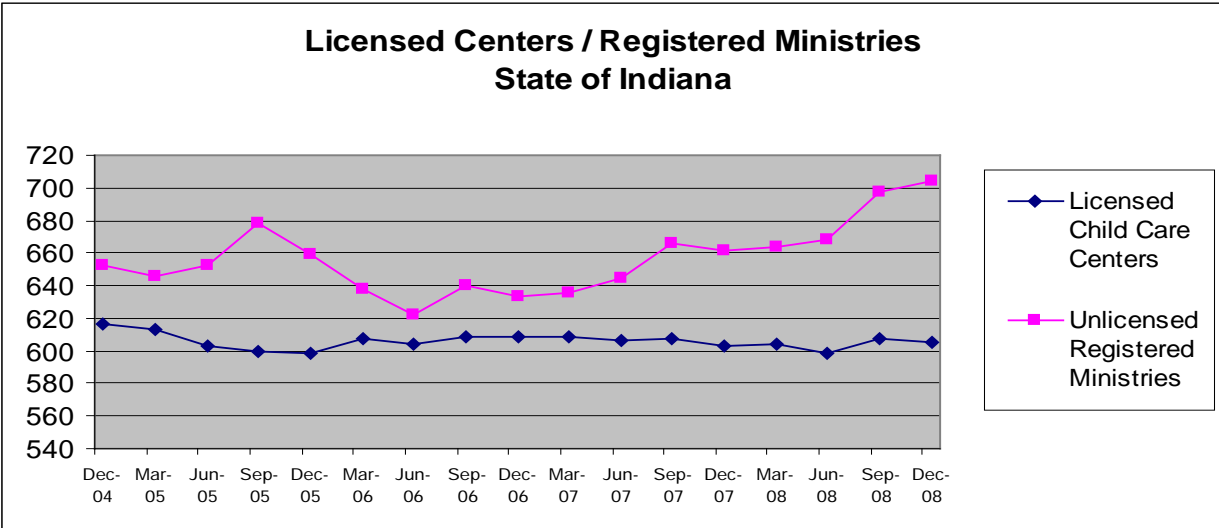
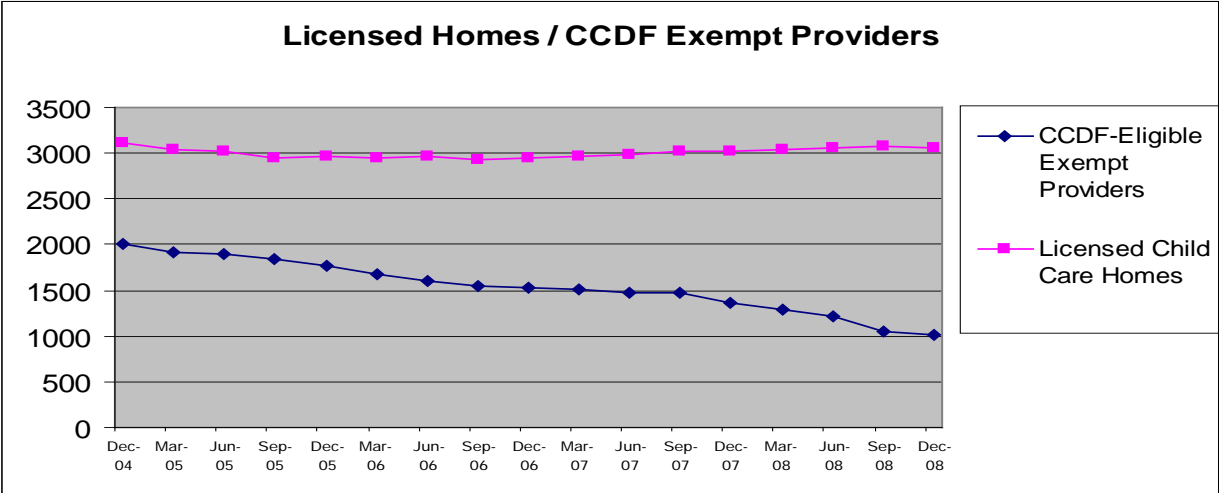


**DIVISION OF FAMILY RESOURCES
AUTHORIZED CHILDREN
CHILD CARE AND DEVELOPMENT FUND**





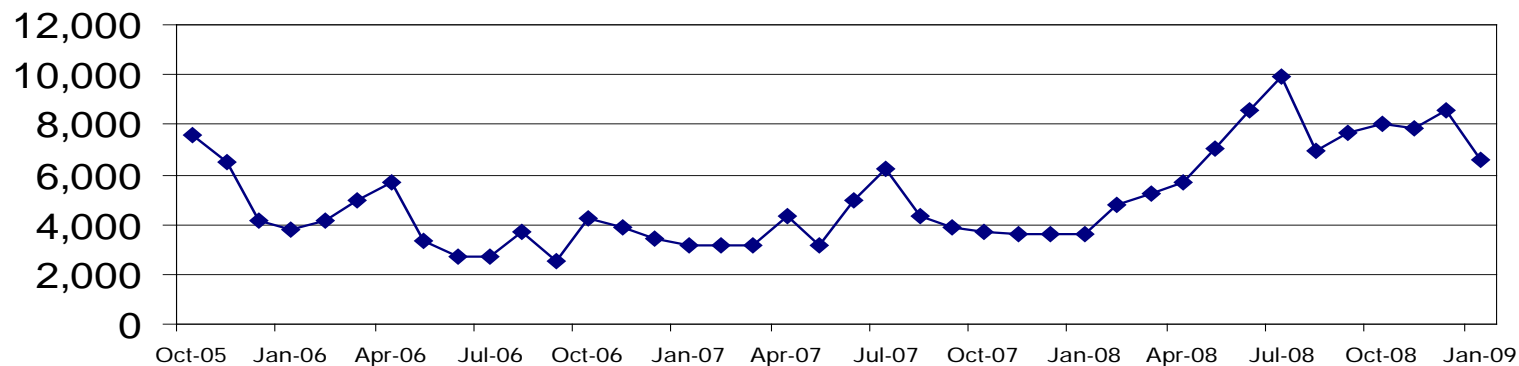
DIVISION OF FAMILY RESOURCES CHILD CARE PROVIDERS SINCE DECEMBER 2004





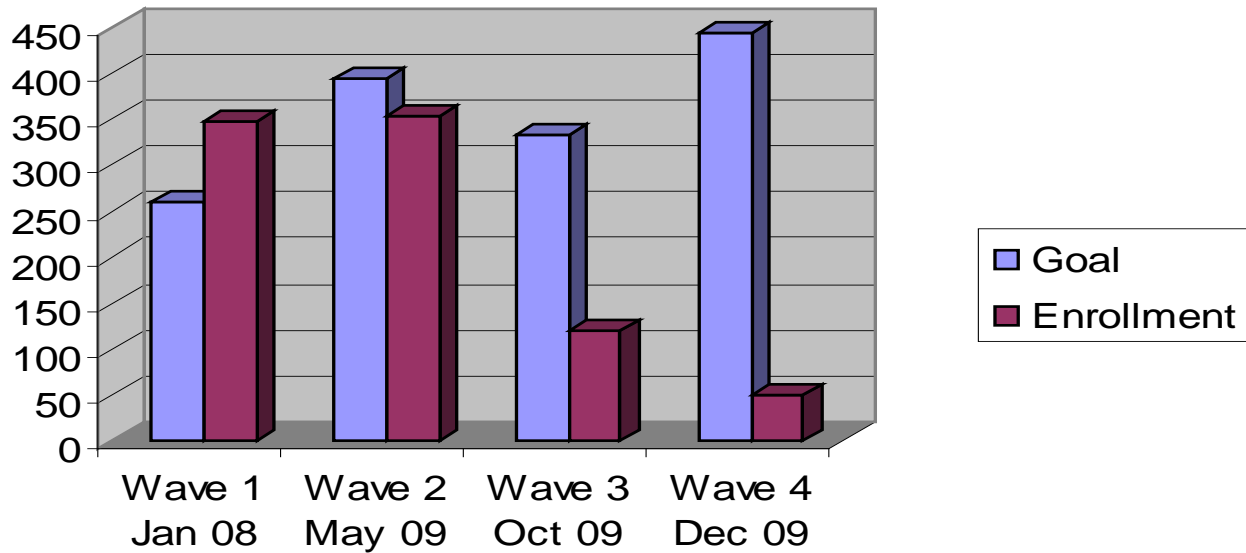
**DIVISION OF FAMILY RESOURCES
AUTHORIZED CHILDREN
CHILD CARE AND DEVELOPMENT FUND**

**Monthly Wait List
FFY 06- FFY 09**





Statewide Paths To Quality - Participation Goals - Wave 4 Rolled Out Jan 5th 2009





TANF Assistance

January-09

Numbers Illustrated in Thousands

Expenditures

- .3 Consulting/Outsourced Contracts**
- Automation
- .7 Program Admin./Direct Service Contracts**
- Program Administration
- TANF Cash Assistance
- TANF Unemployed Parent Assistance

Total - Expenditures

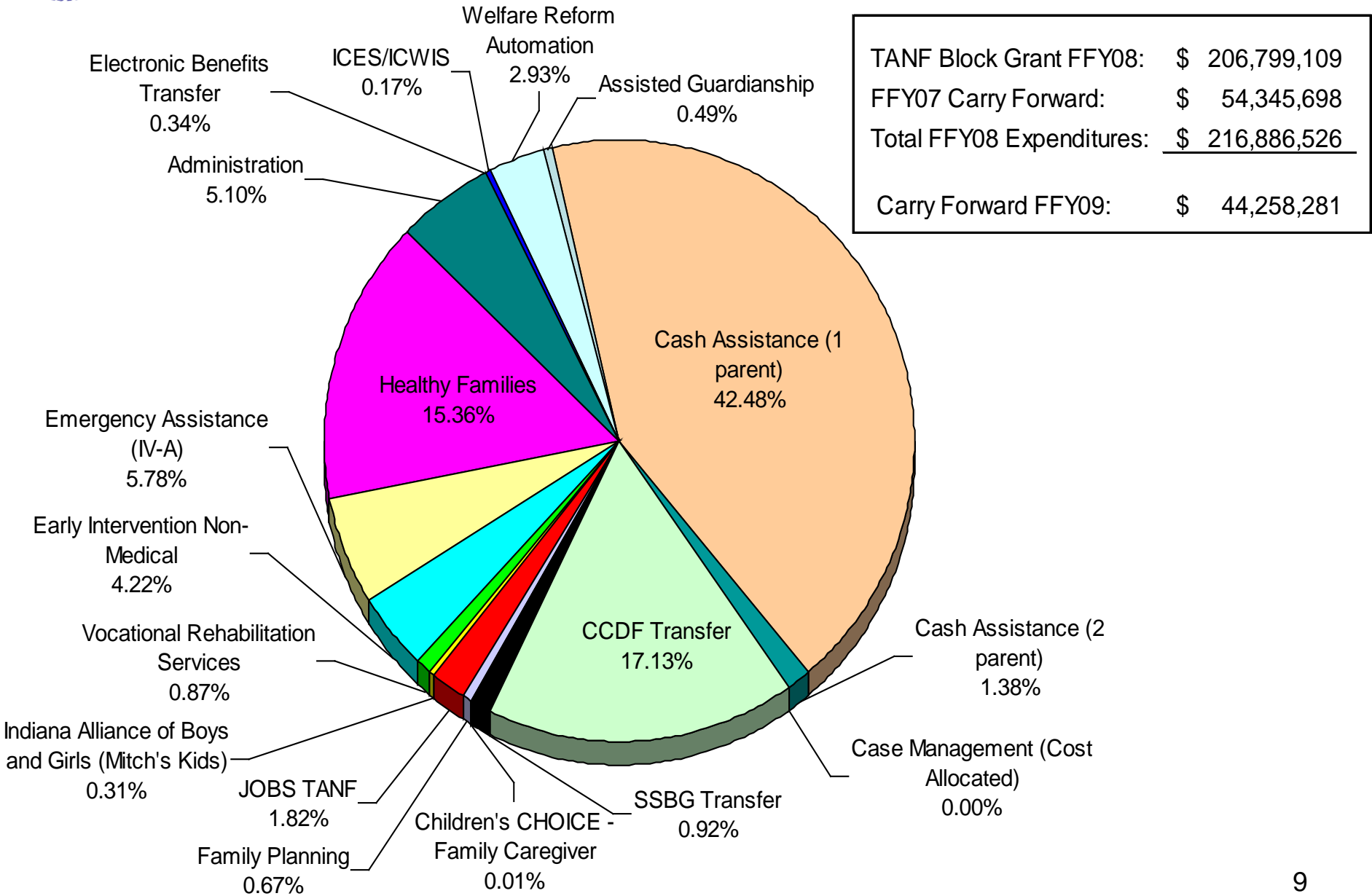
	Current	SFY 2009 Year To Date			SFY 2009		
		Actual Spent	Budget	Variance	Forecast	Budget	Variance
.3 Consulting/Outsourced Contracts	53	1,129	1,261	133	1,935	2,814	879
Automation	53	1,129	1,261	133	1,935	2,814	879
.7 Program Admin./Direct Service Contracts	8,865	62,010	63,750	1,740	106,304	111,791	5,487
Program Administration	50	2,744	2,769	26	4,704	5,548	844
TANF Cash Assistance	8,815	57,850	59,564	1,714	100,183	104,743	4,559
TANF Unemployed Parent Assistance	0	1,417	1,417	0	1,417	1,500	83
Total - Expenditures	8,918	63,139	65,011	1,872	108,239	114,605	6,366



DIVISION OF FAMILY RESOURCES

TANF Federal Block Grant

FFY 2008



TANF Block Grant FFY08:	\$ 206,799,109
FFY07 Carry Forward:	\$ 54,345,698
Total FFY08 Expenditures:	<u>\$ 216,886,526</u>
Carry Forward FFY09:	\$ 44,258,281

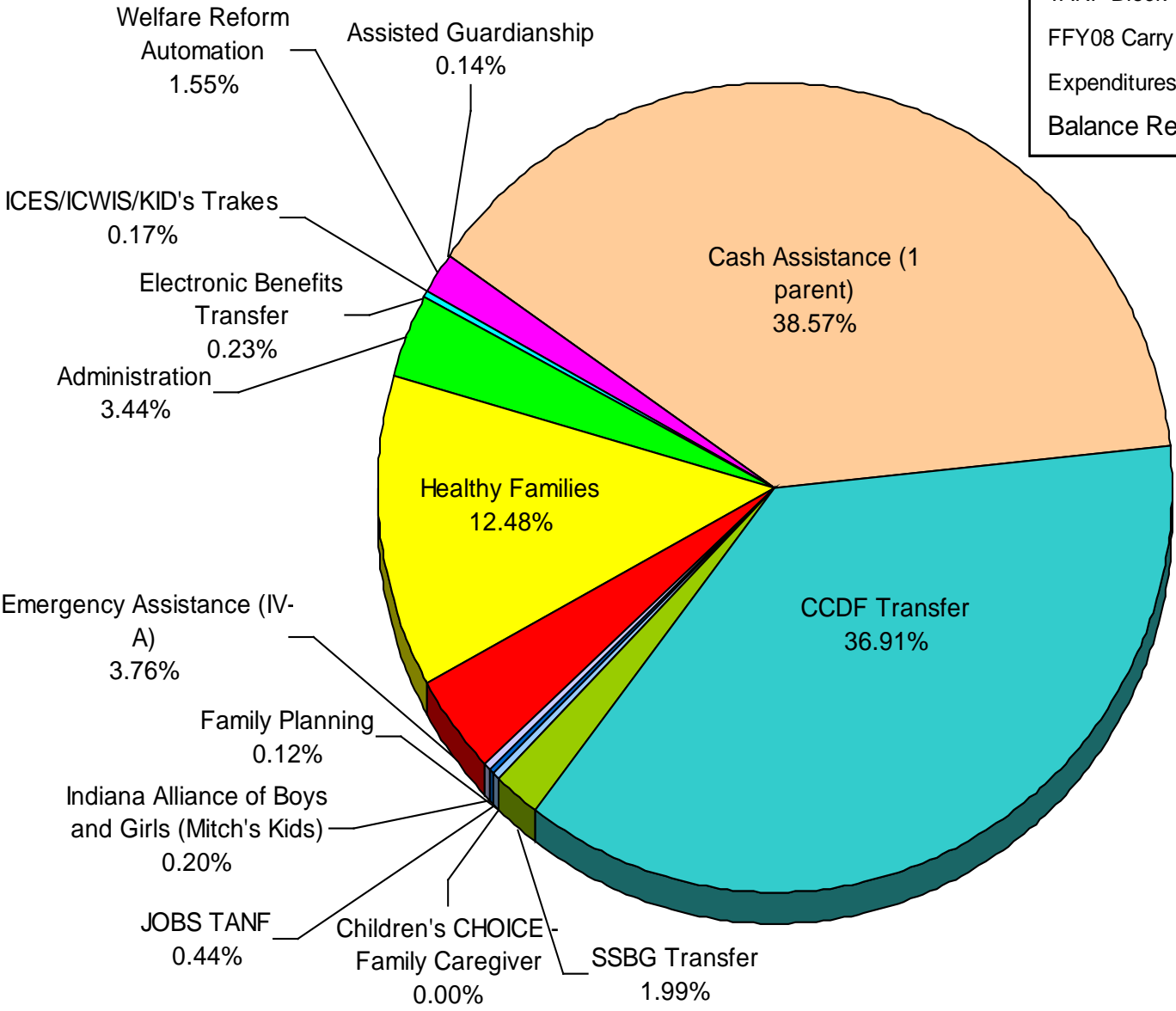


DIVISION OF FAMILY RESOURCES

TANF Federal Block Grant

FFY 2009

TANF Block Grant FFY09:	\$ 206,799,109
FFY08 Carry Forward:	\$ 44,258,281
Expenditures a/o Jan 31, 2009	<u>\$ 100,673,211</u>
Balance Remaining:	\$ 150,384,179

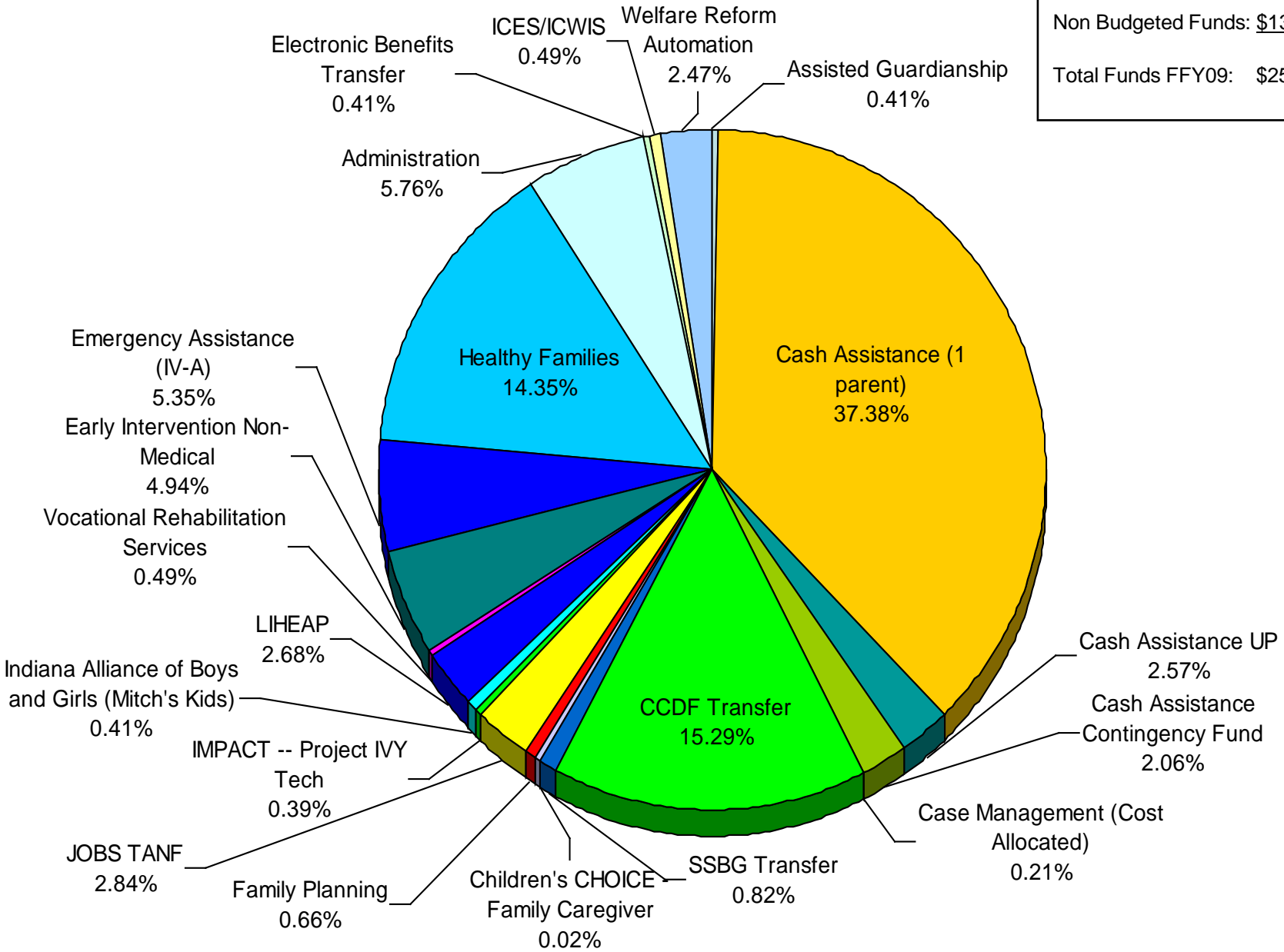




DIVISION OF FAMILY RESOURCES

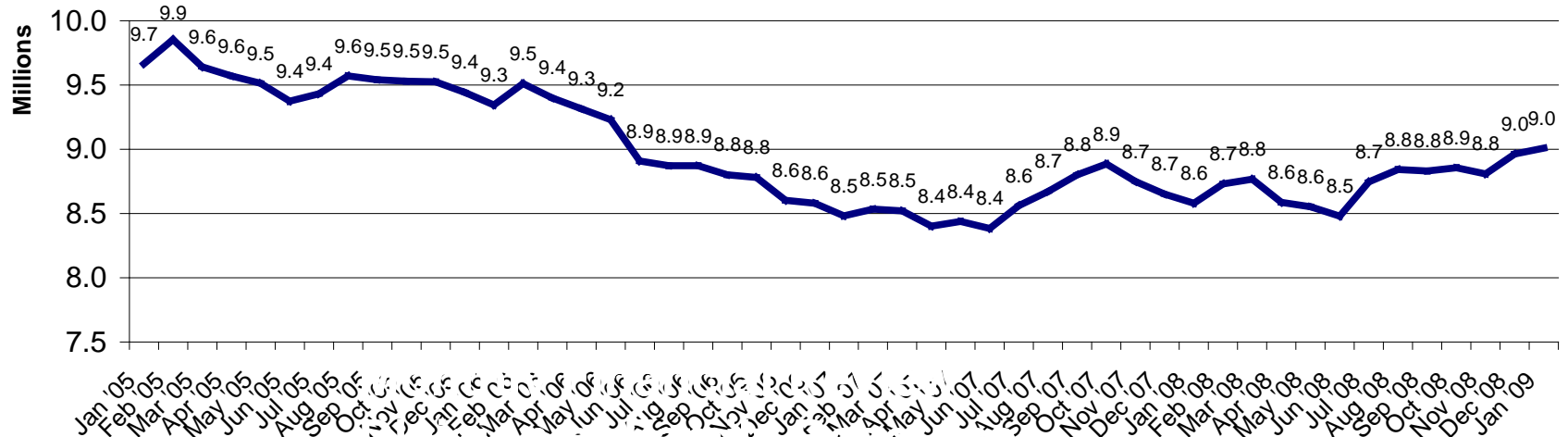
TANF Federal Proposed Budgeted Amounts FFY 09

Proposed Budget:	\$238,001,519
Non Budgeted Funds:	<u>\$13,055,871</u>
Total Funds FFY09:	\$251,057,390

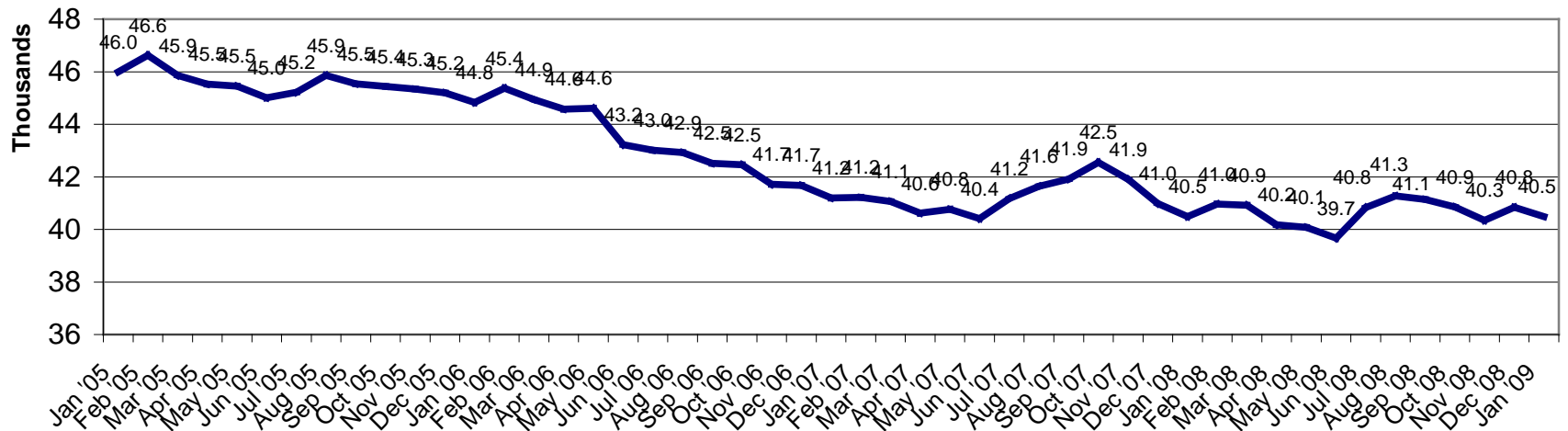




Total TANF Cash Assistance



Total TANF Caseload





Temporary Assistance for Needy Families (TANF)

TANF - Regular	January 2009	December 2008	January 2008
Number of families receiving TANF grants	35,710	36,323	37,500
Total number of grant recipients	93,727	95,749	99,444
Adults	28,315	28,920	30,032
Children	65,412	66,829	69,412
Total payments	\$7,626,882	\$7,673,895	\$7,742,634
Average payment per case	\$213.58	\$211.27	\$206.47
Average payment per person	\$81.37	\$80.15	\$77.86
Number of TANF cases with benefits reduced to zero	3,606	3,659	4,351
Number of TANF recipients with benefits reduced to zero	10,396	10,507	12,717
Adults	3,429	3,473	4,228
Children	6,967	7,034	8,489

TANF - Unemployed Parent	January 2009	December 2008	January 2008
Number of families receiving TANF grants	4,774	4,521	2,991
Total number of grant recipients	19,262	18,260	12,251
Adults	8,704	8,199	5,521
Children	10,558	10,061	6,730
Total payments	\$1,381,806	\$1,290,486	\$837,429
Average payment per case	\$289.44	\$285.44	\$279.98
Average payment per person	\$71.74	\$70.67	\$68.36
Number of TANF cases with benefits reduced to zero	476	462	362
Number of TANF recipients with benefits reduced to zero	1,974	1,934	1,576
Adults	909	880	705
Children	1,065	1,054	871

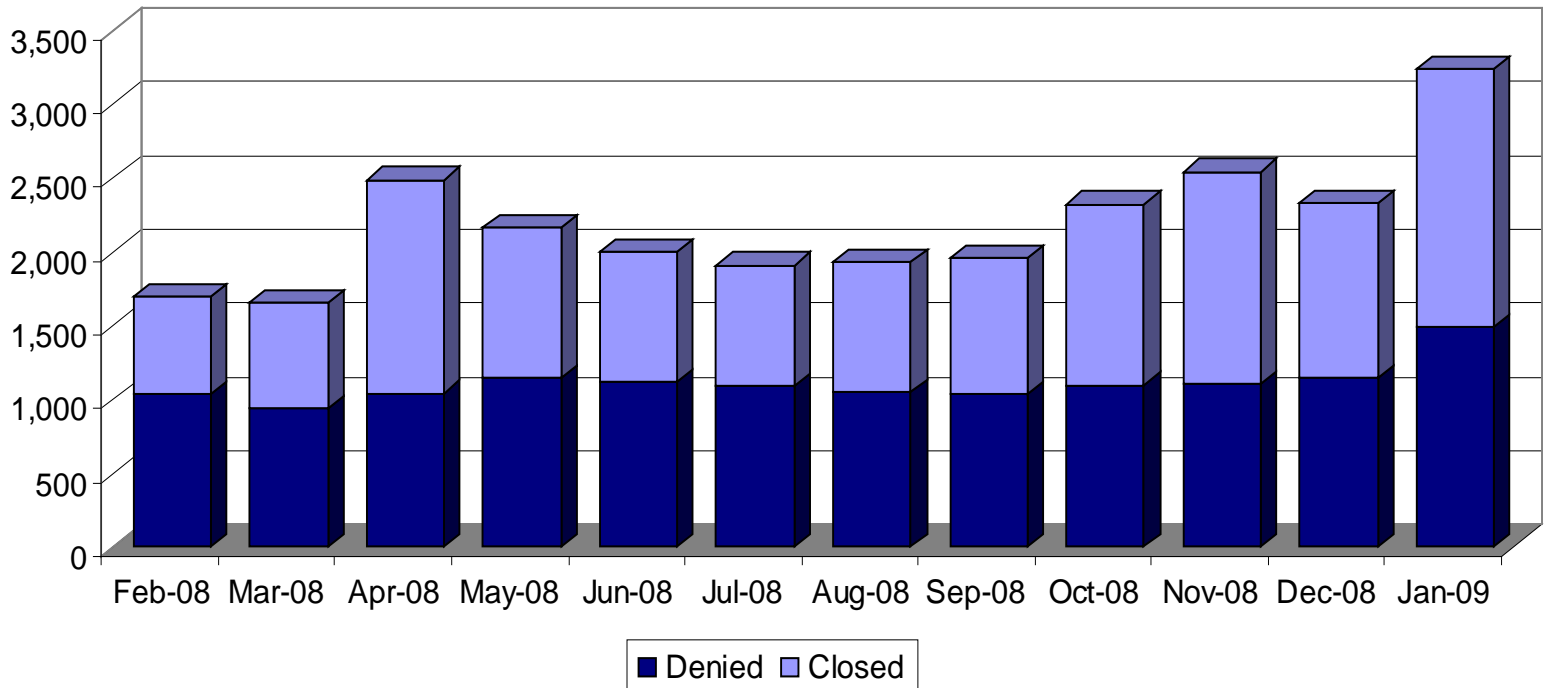


Temporary Assistance for Needy Families (TANF)			
Total TANF	January 2009	December 2008	January 2008
Number of families receiving TANF grants	40,484	40,844	40,491
Total number of grant recipients	112,989	114,009	111,695
Adults	37,019	37,119	35,553
Children	75,970	76,890	76,142
Total payments	\$9,008,688	\$8,964,381	\$8,580,063
Average payment per case	\$222.52	\$219.48	\$211.90
Average payment per person	\$79.73	\$78.63	\$76.82
Number of TANF cases with benefits reduced to zero	4,082	4,121	4,713
Number of TANF recipients with benefits reduced to zero	12,370	12,441	14,293
Adults	4,338	4,353	4,933
Children	8,032	8,088	9,360



TANF Full Family Sanction Data

	02-2008	03-2008	04-2008	05-2008	06-2008	07-2008	08-2008	09-2008	10-2008	11-2008	12-2008	01-2009
Closed	659	711	1446	1014	884	821	886	921	1227	1437	1181	1750
Denied	1033	943	1042	1149	1113	1089	1045	1038	1096	1106	1143	1489
Total	1692	1654	2488	2163	1997	1910	1931	1959	2323	2543	2324	3239



Source: ICES



County Administration

January-09

Numbers Illustrated in Thousands

Expenditures

- .1 Salaries, Wages & Fringe Benefits
- .2 Communications
- .3 Consulting/Outsourced Contracts
 - IBM Modernization Project
 - Office Space Leases
 - Other Contracts
- .4 Supplies/Printing
- .5 Equipment/Furniture
- .7 Program Admin./Direct Service Contracts
- .8 In State Travel
- .9 Out of State Travel
- Total - Expenditures**

Current Month	SFY 2009 Year To Date			SFY 2009		
	Actual Spent	Budget	Variance	Forecast	Budget	Variance
3,108	21,129	22,792	1,663	36,221	39,072	2,851
420	2,731	2,166	(565)	4,681	3,712	(969)
14,371	75,653	81,364	5,711	119,296	139,482	20,186
13,468	85,093	76,142	(8,951)	125,479	130,530	5,051
64	2,420	2,306	(115)	4,149	3,953	(196)
839	(11,860)	2,916	14,777	(10,332)	5,000	15,331
15	228	359	131	392	616	224
10	388	263	(125)	665	450	(215)
2	73	493	420	125	845	720
10	219	203	(16)	376	348	(28)
0	(6)	4	10	(10)	7	17
17,935	100,415	107,644	7,229	161,745	184,533	22,787



Eligibility Modernization - Dashboard

Program Dashboard		GREEN: STAY THE COURSE - PROGRESSIN GREEN: STAY THE COURSE - PROGRESSING ACCORDING TO PLAN YELLOW: CAUTION - AGGRESSIVE PLAN OF YELLOW: CAUTION - AGGRESSIVE PLAN OR ISSUES NEEDING CORRECTIVE ACTION EXIST RED: URGENT - ACTION REQUIRED IMMEDI/ RED: URGENT - ACTION REQUIRED IMMEDIATELY				
Status	Measurement	Actual	Plan / Target	Freq.	Comments / Actions	Currently Contract Measure
●	Application Backlog (as of 2/22/09)	10327	11029	Daily	Plan / Target numbers are from action plan the Coalition put together on 2/2/09	No
●	Timeliness Measures			Monthly		Yes
●	● Monthly Timeliness from ICES (Jan. 09)	62.6%	85%		Target from last agreed upon Go/No Go criteria for Region 3	
●	● Coalition Timeliness (w/e 2/20/09)	85.4%	85%	Weekly	Operational Measure using Coalition Reports, overall timeliness reported by ICES	
●	Help Center Wait Times (Avg. Mins.)			Weekly	Targets set by Coalition Management, action plan in place on Phone Redets Appointments	No
●	● Scheduled Local Office Appointment	6.87	< 30 mins			
●	● Scheduled Phone Appointment	25.11	< 15 mins			
●	● IMPACT Services	2.58	< 30 mins			
●	● Other DFR Services	4.20	< 30 mins			
●	Call Center Performance			Monthly		Yes
●	● Average Call Response Time	173.95	< 120.0		With Abandonment rate at 7% and our average call duration, this will not be met.	
●	● Average Hold Time	99.71	< 180.0			
●	● Call Abandonment Rate	5.58	< 7.0%			
●	● Call Blockage Rate	0.00	< 0.05%			
●	System Availability			Monthly	All monthly measures met in January 2009	Yes
●	● Telephony IVR Phone System	100.00	> 99.5			
●	● Workflow Management System	99.89	> 99.5			
●	● Eligibility Web Site	99.97	> 99.5			
●	● System of Record Interface (SOA)	100.00	> 99.5			
●	Constituent Care			Monthly		Yes
●	● Constituent Care Timeliness - Priority 1	99.64%	> 95.0%		Resolution of constituent care tickets met the timeliness standard	
●	● Constituent Care Timeliness - Priority 2	100.0%	> 95.0%			
●	● Legislative Complaints Rec'd	TBD	TBD		Need to determine target measures for legislative and all other constituent care issues	
●	● All Other Complaints	TBD	TBD			
●	As Is Transition KPIs			Monthly		Yes
●	● Medicaid Application Volume	24,793	25,332		From TKPI monthly scorecard provided by OV&V	
●	● TANF Application Volume	2,746	2,330		Application volume for the month of January 2009 was just .02% below the baseline period	
●	● Food Stamps Application Volume	16,038	11,751			
●	● Medicaid Timeliness	80.52%	80.49%			
●	● TANF Timeliness	66.30%	74.70%			
●	● Food Stamps Timeliness	79.50%	78.20%		Increase volume in FS applications over the baseline and the priority on FS application timeliness has impacted TANF timeliness.	



Call Center January 2009 Report

Report Name: <i>Averages By Queue January 2009</i>							
Report Creation Date: <i>2/10/2009</i>							
Date	Queue Name	Total Calls Answered by Queue	Average Call Response Time (in minutes)	Average Hold Time (in minutes)	Average Talk Time (in minutes)	Average Total Call Duration (in Minutes)	% Completed in Queue
January-09	Tier1	106,246	1.87	1.37	4.88	5.90	56%
January-09	Tier2	52,761	3.76	1.69	5.92	8.05	28%
January-09	PRT	27,447	9.54	1.47	8.68	14.69	14%
January-09	M-SWAT	2,899	1.64	0.44	7.43	8.73	2%
Average for January 2009		Total Queue minutes	Average Call Duration (in Minutes)				
All Queues		3.5	10.82				



Monthly Financial Review

Division of Family Resources

Indiana Client Eligibility System (ICES)

January-09

Numbers Illustrated in Thousands

Expenditures

- .1 Salaries, Wages & Fringe Benefits
- .2 Communications
- .3 Consulting/Outsourced Contracts
 - Anthony Wayne Rehab/Postmasters
 - Central Data Processing
 - Deloitte Consulting
 - Other Contracts
- .4 Supplies/Printing
- .5 Equipment/Furniture
- .8 In State Travel

Total - Expenditures

Current Month	SFY 2009 Year To Date			SFY 2009		
	Actual Spent	Budget	Variance	Forecast	Budget	Variance
0	2	414	412	750	758	8
2	246	290	44	422	510	88
1,783	6,673	6,624	(49)	11,440	14,222	2,782
342	2,033	1,997	(35)	3,485	3,225	(260)
948	2,888	2,550	(338)	4,951	3,546	(1,405)
427	2,875	2,661	(214)	4,929	4,484	(445)
66	(1,123)	(584)	538	(1,924)	2,967	4,892
0	0	0	0	0	0	0
0	0	0	(0)	1	0	(0)
1	2	1	(1)	3	1	(2)
1,785	6,924	7,330	406	12,616	15,492	2,876



Monthly Financial Review

Division of Family Resources

TANF Impact

January-09
Numbers Illustrated in Thousands

Expenditures

- .1 Salaries, Wages & Fringe Benefits
- .2 Communications
- .3 Consulting/Outsourced Contracts
- .4 Supplies/Printing
- .5 Equipment/Furniture
- .7 Program Admin./Direct Service Contracts
 - Supportive Services
 - Direct Services
- .8 In State Travel

Total - Expenditures

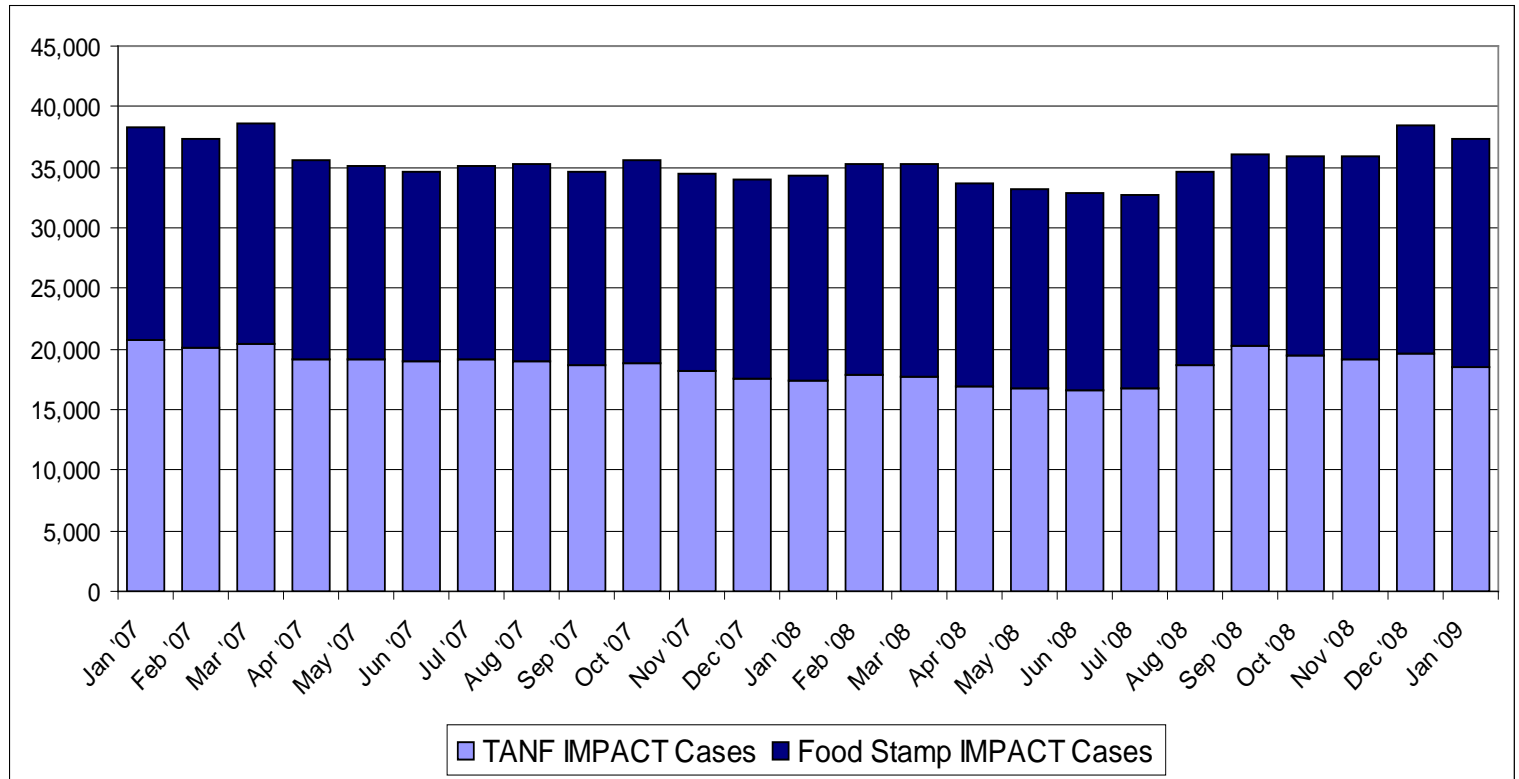
Current Month	SFY 2009 Year To Date			SFY 2009		
	Actual Spent	Budget	Variance	Forecast	Budget	Variance
19	150	163	13	258	312	54
0	2	2	0	4	4	0
1	9	2,461	2,452	9,699	176	(9,524)
0	0	1	1	0	5	5
0	0	2	2	0	10	10
103	1,725	2,166	441	2,957	4,500	1,543
19	854	913	58	1,465	2,148	683
84	871	1,253	382	1,493	2,352	859
0	0	1	1	0	6	5
124	1,886	4,796	2,909	12,919	5,012	(7,907)



Indiana Manpower Placement and Comprehensive Training (IMPACT)

IMPACT Caseloads			
	Jan 2009	Dec 2008	Jan 2008
Total IMPACT Cases	37,263	38,477	34,314
TANF IMPACT Cases	18,441	19,629	17,348
Food Stamp Cases	18,822	18,848	16,966

IMPACT Caseloads Last 24 Months



Source: ICES IMPACT



Indiana Manpower Placement and Comprehensive Training (IMPACT)

IMPACT Clients With Paid Contract Services During the Month

	Jan 2009	Dec 2008	Nov 2008
Total Clients	97	186	285
TANF Clients	96	141	230
Food Stamp Clients	1	45	55

IMPACT Clients With Paid Supportive Services During the Month

	Jan 2009	Dec 2008	Nov 2008
Total Clients	69	128	134
TANF Clients	59	109	110
Food Stamp Clients	10	19	24

IMPACT Clients With Either Paid Contract Services or Supportive

	Jan 2009	Dec 2008	Nov 2008
Total Clients	166	313	410
TANF Clients	155	249	331
Food Stamp Clients	11	64	79

IMPACT Expenditures for Paid Contract Services Paid During the Month

	Jan 2009	Dec 2008	Nov 2008
Total Expenditures	\$82,750	\$103,720	\$184,630
TANF Expenditures	\$82,150	\$89,970	\$160,840
Food Stamp Expenditures	\$600	\$13,750	\$23,790

IMPACT Expenditures for Paid Supportive Services During the Month

	Jan 2009	Dec 2008	Nov 2008
Total Expenditures	\$22,928	\$54,511	\$42,749
TANF Expenditures	\$20,089	\$43,576	\$36,358
Food Stamp Expenditures	\$2,839	\$10,934	\$6,391

Total Expenditures During the Month Per IMPACT Caseload

	Jan 2009	Dec 2008	Nov 2008
Total Expenditures Per Client	\$3	\$4	\$6
TANF Per Client	\$6	\$7	\$11
Food Stamp Per Client	\$0	\$1	\$2

Total Expenditures During the Month Per Clients Receiving Either Contract Services or Supportive Services

	Jan 2009	Dec 2008	Nov 2008
Total Expenditures Per Client	\$637	\$506	\$555
TANF Per Client	\$660	\$536	\$596
Food Stamp Per Client	\$313	\$386	\$382

Source: ICES IMPACT Payments and Offline Payments

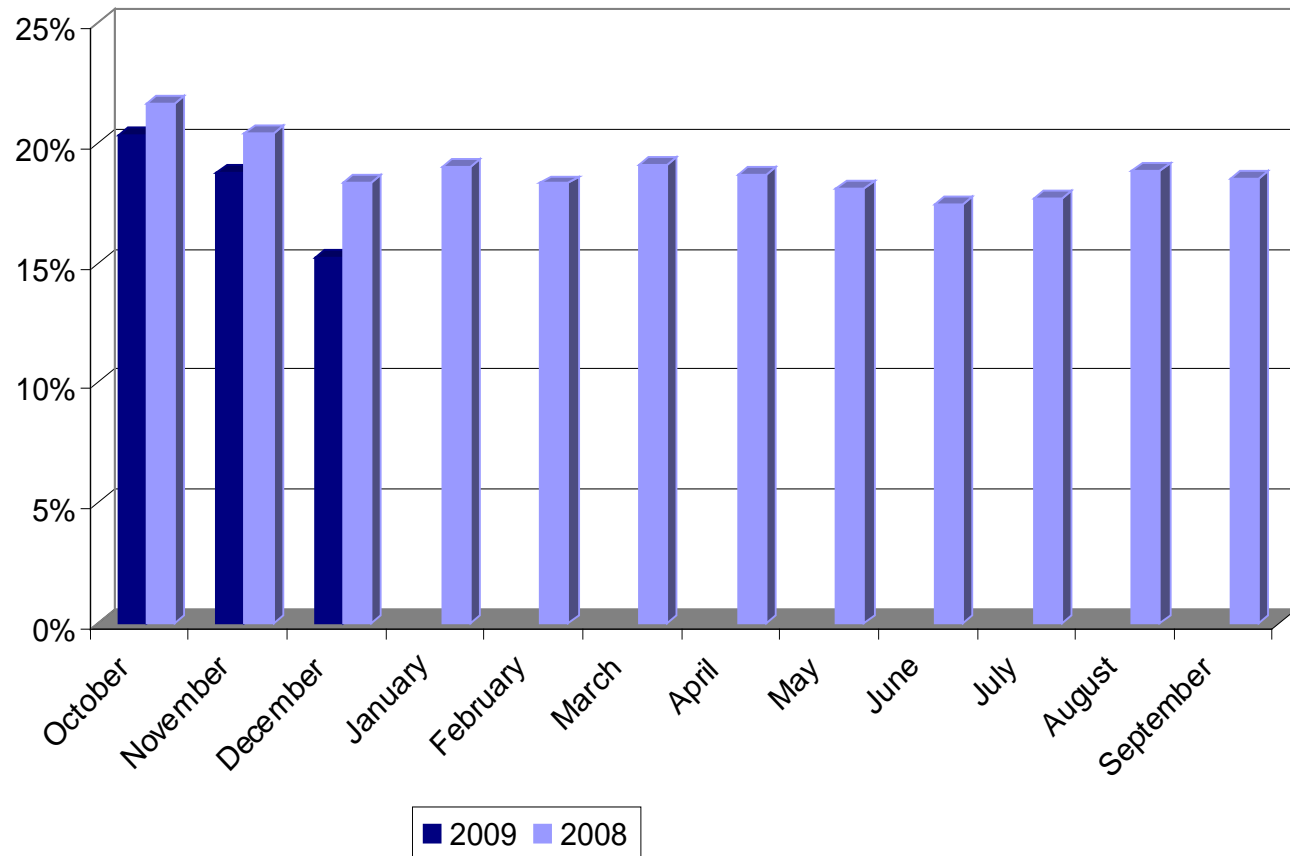


TANF Work Participation

	Oct 2008	Nov 2008	Dec 2008	Jan 2009	Feb 2009	Mar 2009	Apr 2009	May 2009	Jun 2009	Jul 2009	Aug 2009	Sep 2009	YTD 2009
Statewide	20.4%	18.8%	15.2%	NA	NA	NA	NA	NA	NA	NA	NA	NA	18.1%

TANF Work Participation Rate Numbers are not available until 45 days after the end of the reporting month. Therefore, for the purpose of this report these numbers are reported one month behind the report month.

Monthly TANF Work Participation Rates for Federal Fiscal Years 2008 and 2009





Food Stamp IMPACT

January-09
Numbers Illustrated in Thousands

Expenditures

- .1 Salaries, Wages & Fringe Benefits
- .2 Communications
- .3 Consulting/Outsourced Contracts
- .7 Program Admin./Direct Service Contracts
 - Supportive Services
 - Direct Services
- .8 In State Travel

Total - Expenditures

Current Month	SFY 2009 Year To Date			SFY 2009		
	Actual Spent	Budget	Variance	Forecast	Budget	Variance
14	109	111	2	187	174	(13)
1	2	3	1	4	9	5
0	426	2,878	2,452	11,441	106	(11,335)
4	450	740	290	772	2,073	1,302
2	262	326	64	449	949	500
2	188	414	226	322	1,124	802
0	1	2	1	2	5	3
19	989	3,734	2,745	12,405	2,368	(10,037)



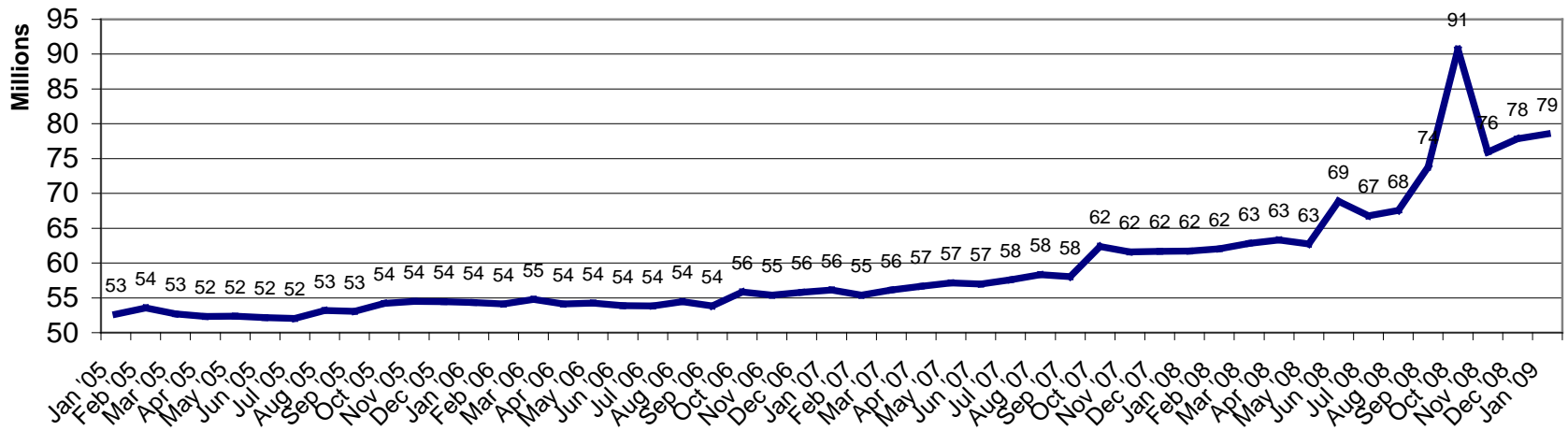
Food Stamp Program Caseload and Dollars Issued

	January 2009	December 2008	January 2008
Total stamps issued	78,532,974	77,864,026	61,704,316
Number of households receiving assistance	289,304	287,343	261,914
Number of recipients	675,871	670,192	608,080
Average assistance per household	\$271.45	\$270.98	\$235.59
Average assistance per recipient	\$116.20	\$116.18	\$101.47

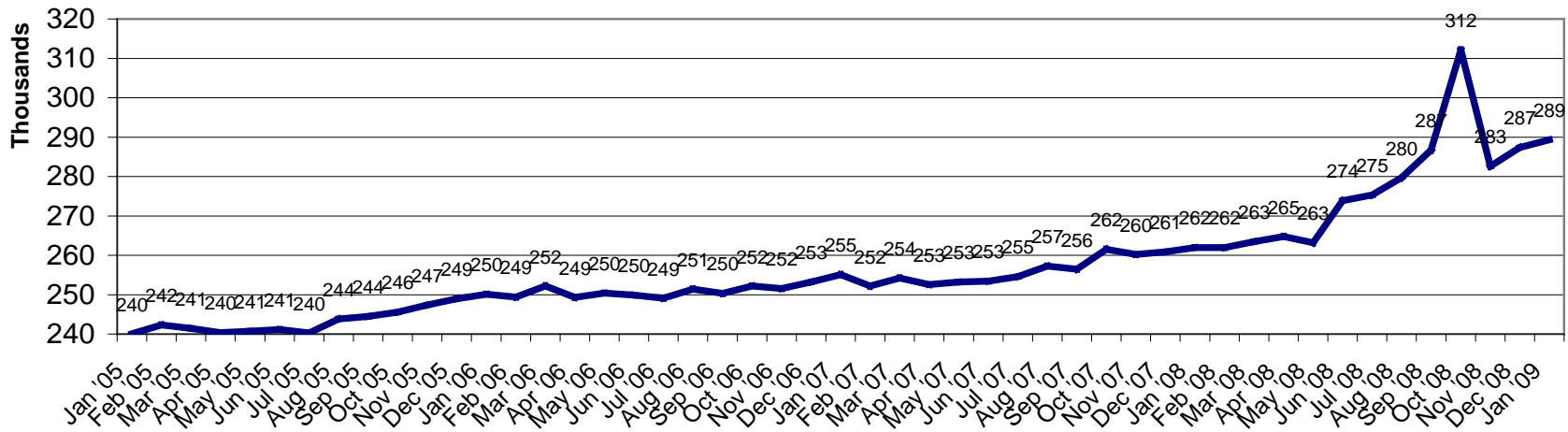
Source: Cognos GRP304RF Report



Food Stamps Issued



Food Stamp Households





Error rate data for a sample month is not reported by the state until 113 days after the end of that month, which is the deadline for submission to the Federal Agency for review and subsequent acceptance or revision. The figures below represent the most current data available at the time this report was prepared.

Monthly and Year to Date Positive Error Rates Comparisons for FFY 2008 and 2009

FFY 2008

	Oct	Nov	Dec	Jan	Feb	Mar	Apr	May	Jun	Jul	Aug	Sep
Cumulative	3.65%	6.12%	6.38%	5.77%	6.03%	5.57%	5.36%	5.40%	5.85%	6.12%	6.49%	7.24%
Monthly	3.65%	8.45%	6.98%	4.11%	7.13%	3.33%	4.22%	5.92%	9.36%	8.44%	9.91%	14.51%

FFY 2009

	Oct	Nov	Dec	Jan	Feb	Mar	Apr	May	Jun	Jul	Aug	Sep
Cumulative	6.36%	0.00%	0.00%	0.00%	0.00%	0.00%	0.00%	0.00%	0.00%	0.00%	0.00%	0.00%
Monthly	6.36%	0.00%	0.00%	0.00%	0.00%	0.00%	0.00%	0.00%	0.00%	0.00%	0.00%	0.00%

Monthly and Year to Date Negative Error Rates Comparisons for FFY 2008 and 2009

FFY 2008

	Oct	Nov	Dec	Jan	Feb	Mar	Apr	May	Jun	Jul	Aug	Sep
Cumulative	6.94%	6.29%	7.92%	9.40%	10.24%	11.19%	12.45%	12.98%	12.87%	12.32%	11.96%	12.18%
Monthly	6.94%	5.63%	11.86%	14.06%	14.06%	16.42%	19.44%	17.91%	12.12%	7.35%	7.41%	14.47%

FFY 2009

	Oct	Nov	Dec	Jan	Feb	Mar	Apr	May	Jun	Jul	Aug	Sep
Cumulative	15.71%	0.00%	0.00%	0.00%	0.00%	0.00%	0.00%	0.00%	0.00%	0.00%	0.00%	0.00%
Monthly	15.71%	0.00%	0.00%	0.00%	0.00%	0.00%	0.00%	0.00%	0.00%	0.00%	0.00%	0.00%

Quality Control reviews of food stamp cases generate annual estimates of the proportion of cases in which caseworkers or recipients make an "error" and the dollar value of those errors. Caseload and dollar error rates are calculated for overpayments and underpayments on positive (active) cases. The accuracy of decisions denying or terminating food stamp assistance is also measured with an error rate reflecting the proportion of denials and terminations that were improper. No dollar value is calculated on these negative (closed) cases. The dollar error rates reported through the food stamp Quality Control system are used as the basis for assessing the financial liability of states for overpaid and underpaid benefits. States with persistently high error rates are assessed sanctions.

Source: QC Review Schedules



DFR Administration Central Office

January-09

Numbers Illustrated in Thousands

Expenditures

- .1 Salaries, Wages & Fringe Benefits
- .2 Communications
- .3 Consulting/Outsourced Contracts
- .4 Supplies/Printing
- .5 Equipment/Furniture
- .7 Program Admin./Direct Service Contracts
- .8 In State Travel
- .9 Out of State Travel

Total - Expenditures

Current Month	SFY 2009 Year To Date			SFY 2009		
	Actual Spent	Budget	Variance	Forecast	Budget	Variance
498	3,462	3,647	185	5,935	6,252	317
13	113	116	3	194	181	(13)
166	1,370	1,229	(141)	2,349	489	(1,860)
2	73	80	8	124	152	28
1	14	13	(2)	24	31	7
(1)	(0)	3	3	(1)	18	19
15	111	114	3	191	162	(29)
0	6	6	(0)	11	5	(6)
695	5,149	5,208	59	8,827	7,291	(1,536)



Electronic Benefits Transfer (EBT)

January-09

Numbers Illustrated in Thousands

Expenditures

- .1 Salaries, Wages & Fringe Benefits
- .2 Communications
- .3 Consulting/Outsourced Contracts
 - JP Morgan Contract
 - Other Contracts
- .7 Program Admin./Direct Service Contracts
- .8 In State Travel
- .9 Out of State Travel

Total - Expenditures

Current Month	SFY 2009 Year To Date			SFY 2009		
	Actual Spent	Budget	Variance	Forecast	Budget	Variance
0	8	14	6	14	0	(14)
0	1	1	(0)	1	2	0
279	1,738	2,261	523	2,980	4,964	1,984
223	1,824	1,271	(553)	3,128	2,214	(914)
56	(86)	989	1,076	(148)	2,750	2,898
9	9	(223)	(232)	16	49	33
0	(0)	0	0	(0)	0	1
0	0	0	0	0	1	1
288	1,756	2,052	296	3,010	5,015	2,004



Monthly Financial Review

Division of Family Resources

Domestic Violence Prevention & Treatment (DVPT)

January-09

Numbers Illustrated in Thousands

Expenditures

- .1 Salaries, Wages & Fringe Benefits
- .2 Communications
- .3 Consulting/Outsourced Contracts
 - IN Coalition Against Domestic Violence
- .4 Supplies/Printing
- .7 Program Admin./Direct Service Contracts
- .8 In State Travel

Total - Expenditures

Current Month	SFY 2009 Year To Date			SFY 2009			
	Actual Spent	Budget	Variance	Forecast	Budget	Variance	
.1	8	56	59	3	96	101	5
.2	0	0	0	(0)	1	0	(0)
.3	1	46	57	10	80	85	5
IN Coalition Against Domestic Violence	1	46	57	10	80	85	5
.4	0	1	0	(0)	1	0	(1)
.7	174	1,881	1,804	(77)	3,225	2,817	(407)
.8	0	0	1	0	0	2	1
Total - Expenditures	183	1,985	1,921	(64)	3,403	3,006	(397)



Federal Family Violence Prevention Fund (FFV)

January-09
Numbers Illustrated in Thousands

Expenditures

.7 Program Admin./Direct Service Contracts

Total - Expenditures

Current Month	FFY 2009 Year To Date			FFY 2009		
	Actual Spent	Budget	Variance	Forecast	Budget	Variance
150	1,012	1,070	58	1,734	1,910	176
150	1,012	1,070	58	1,734	1,910	176



Burials

January-09

Numbers Illustrated in Thousands

Expenditures

.7 Burial Case Service

Total - Expenditures

Current Month	SFY 2009 Year To Date			SFY 2009		
	Actual Spent	Budget	Variance	Forecast	Budget	Variance
203	945	783	(162)	1,620	1,343	(278)
203	945	783	(162)	1,620	1,343	(278)



School Age Child Care (SACC)

January-09

Numbers Illustrated in Thousands

Expenditures

.7 Day Care Providers

Total - Expenditures

Current Month	SFY 2009 Year To Date			SFY 2009		
	Actual Spent	Budget	Variance	Forecast	Budget	Variance
93	508	487	(21)	872	950	78
93	508	487	(21)	872	950	78



Monthly Financial Review

Division of Family Resources

Head Start Partnership Coordination

January-09
Numbers Illustrated in Thousands

Expenditures

- .1 Salaries, Wages & Fringe Benefits
- .2 Communications
- .3 Consulting/Outsourced Contracts
- .4 Supplies/Printing
- .5 Equipment/Furniture
- .7 Program Admin./Direct Service Contracts
 - Program Administration
 - Direct Services
- .8 In State Travel
- .9 Out of State Travel
- Total - Expenditures**

Current Month	FFY 2009 Year To Date			FFY 2009		
	Actual Spent	Budget	Variance	Forecast	Budget	Variance
10	73	75	2	131	121	(11)
0	0	7	6	25	2	(23)
4	12	11	(0)	20	13	(8)
0	2	2	0	3	5	2
0	2	2	0	3	5	1
0	18	31	13	30	87	57
0	10	13	3	12	16	4
0	8	18	11	18	72	54
0	1	1	(0)	1	1	(1)
0	2	2	(1)	4	2	(2)
14	109	131	22	219	235	16



Commission on Social Status of Black Males

January-09

Numbers Illustrated in Thousands

Expenditures

- .1 Salaries, Wages & Fringe Benefits
- Salaries, Wages & Fringe Benefits
- Per Diem
- .2 Communications
- .3 Consulting/Outsourced Contracts
- .4 Supplies/Printing
- .7 Program Admin./Direct Service Contracts
- .8 In State Travel
- .9 Out of State Travel
- Total - Expenditures**

Current Month	SFY 2009 Year To Date			Variance	SFY 2009		
	Actual	Actual Spent	Budget		Forecast	Budget	Variance
11	80	84	4	138	144	6	
11	80	82	3	137	141	4	
0	0	1	1	1	3	2	
0	1	0	(0)	1	1	(0)	
0	3	3	1	5	6	1	
0	0	1	1	0	3	2	
0	(1)	0	1	(2)	0	2	
0	1	1	0	1	1	0	
0	0	0	0	0	1	1	
11	83	90	7	143	155	12	



Monthly Financial Review Division of Family Resources

Child Care Fees and Fines

January-09

Numbers Illustrated in Thousands

Expenditures

- .3 Consulting/Outsourced Contracts
- .8 In State Travel
- .9 Out of State Travel
- Total - Expenditures**

Current Month	SFY 2009 Year To Date			SFY 2009			
	Actual Spent	Budget	Variance	Forecast	Budget	Variance	
.3 Consulting/Outsourced Contracts	0	18	18	(0)	31	13	(18)
.8 In State Travel	0	1	8	7	1	19	17
.9 Out of State Travel	0	3	4	2	4	19	15
Total - Expenditures	1	21	29	8	36	50	14