



Cylindrospermopsin ELISA Summary Report

Office of Water Quality - Watershed Assessment and Planning Branch

Sample #	Location	Date Collected	Date Analyzed	Conc. (ppb)
AB26593	Mississinewa Miami SRA	8/15/2016	8/18/2016	< 0.050
AB26594	Potato Creek SP	8/15/2016	8/18/2016	< 0.050
AB26591	Mississinewa (Field Duplicate)	8/15/2016	8/18/2016	< 0.050
AB26592	Field Blank	8/15/2016	8/18/2016	< 0.050
AB26595	Lost Bridge West SRA	8/16/2016	8/18/2016	< 0.050
AB26595LD	Lost Bridge (Lab Duplicate)	8/16/2016	8/18/2016	< 0.050
20160817LB	Lab Blank	8/16/2016	8/18/2016	< 0.050



Assay Calibration Report

Assay Information

Assay Name: Cylindrospermopsin 1X Units: ng/mL
 Assay Mode: 4-Parameter Logistic # of decimals: 3
 Normal: 0.050 - 2.000 Assay Description:

Controls:

Normal Control

Standards:

Std1, Concentration = 0.000, Minimum number to use: 2

Std2, Concentration = 0.050, Minimum number to use: 2

Std3, Concentration = 0.100, Minimum number to use: 2

Std4, Concentration = 0.250, Minimum number to use: 2

Std5, Concentration = 0.500, Minimum number to use: 2

Std6, Concentration = 1.000, Minimum number to use: 2

Std7, Concentration = 2.000, Minimum number to use: 2

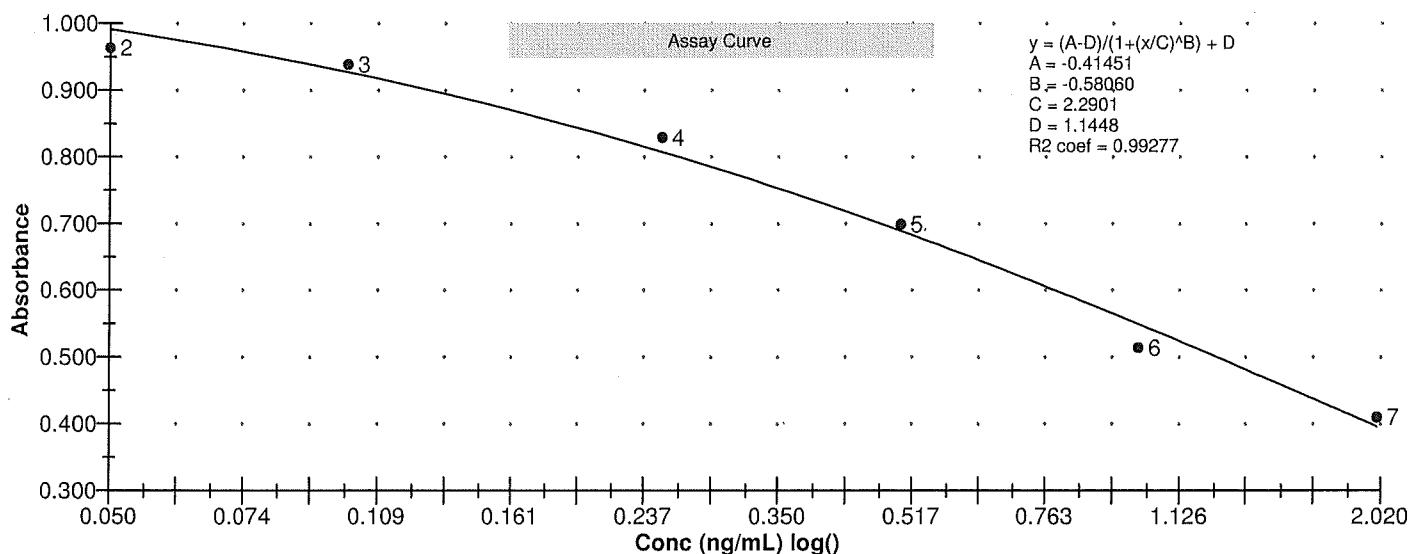
Curve valid interval: 7 days 0 hours

Axis Mode: Y = Abs, X = Log(Conc)

Assay Calibration and Statistics

Name	Absorbance	Concentration	Position
8/18/2016 12:34:58 PM			
Std1	1.110 Abs	0.000 ng/mL	A01
Std1	1.189 Abs	< 0.000 ng/mL	B01
Std2	0.902 Abs	0.125 ng/mL	C01
Std2	1.026 Abs	0.031 ng/mL	D01
Std3	0.876 Abs	0.154 ng/mL	E01
Std3	1.002 Abs	0.044 ng/mL	F01
Std4	0.829 Abs	0.216 ng/mL	G01
Std5	0.712 Abs	0.441 ng/mL	A02
Std5	0.687 Abs	0.505 ng/mL	B02
Std6	0.501 Abs	1.249 ng/mL	C02
Std6	0.527 Abs	1.109 ng/mL	D02
Std7	0.387 Abs	> 2.000 ng/mL	E02
Std7	0.432 Abs	1.704 ng/mL	F02
8/18/2016 12:34:58 PM			
Normal Control	0.651 Abs	0.609 ng/mL	H02
Normal Control	0.600 Abs	0.785 ng/mL	G02

Name	Mean Abs	SD Abs	CV Abs	Mean Conc	SD Conc	CV Conc	Diff Conc
Std1	1.150	0.056	4.86				
Std2	0.964	0.088	9.10	0.078	0.066	85.22	56.00
Std3	0.939	0.089	9.49	0.099	0.078	78.57	-1.00
Std4	0.829			0.216			-13.60
Std5	0.699	0.018	2.53	0.473	0.045	9.57	-5.40
Std6	0.514	0.018	3.58	1.179	0.099	8.40	17.90
Std7	0.410	0.032	7.77				-100.00
Normal Control	0.626	0.036	5.77	0.697	0.124	17.86	





Test Report

Test Information

Name/ID	Assay	Absorbance	Concentration	Interpretation	Reference	Position
8/18/2016 12:34:58 PM						
Std1	Cylindrospermopsin 1X	1.110 Abs	0.000 ng/mL		0.000	A01
Std1	Cylindrospermopsin 1X	1.189 Abs	< 0.000 ng/mL		0.000	B01
Std2	Cylindrospermopsin 1X	0.902 Abs	0.141 ng/mL		0.050	C01
Std2	Cylindrospermopsin 1X	1.026 Abs	0.035 ng/mL		0.050	D01
Std3	Cylindrospermopsin 1X	0.876 Abs	0.173 ng/mL		0.100	E01
Std3	Cylindrospermopsin 1X	1.002 Abs	0.050 ng/mL		0.100	F01
Std4	Cylindrospermopsin 1X	0.829 Abs	0.241 ng/mL		0.250	G01
Std4	Cylindrospermopsin 1X	0.940 Abs	0.101 ng/mL		0.250	H01
Std5	Cylindrospermopsin 1X	0.712 Abs	0.480 ng/mL		0.500	A02
Std5	Cylindrospermopsin 1X	0.687 Abs	0.546 ng/mL		0.500	B02
Std6	Cylindrospermopsin 1X	0.501 Abs	1.278 ng/mL		1.000	C02
Std6	Cylindrospermopsin 1X	0.527 Abs	1.144 ng/mL		1.000	D02
Std7	Cylindrospermopsin 1X	0.387 Abs	> 2.000 ng/mL		2.000	E02
Std7	Cylindrospermopsin 1X	0.432 Abs	1.698 ng/mL		2.000	F02
Normal Control	Cylindrospermopsin 1X	0.600 Abs	0.785 ng/mL			G02
Normal Control	Cylindrospermopsin 1X	0.651 Abs	0.609 ng/mL			H02
AB26593	Cylindrospermopsin 1X	1.133 Abs	0.000 ng/mL	LOW	0.050 - 2.000	A03
AB26593	Cylindrospermopsin 1X	1.188 Abs [1.1605] {3.4 C	< 0.000 ng/mL [< 0.000]	Out(LR) [Out(LR)]	0.050 - 2.000	B03
AB26594	Cylindrospermopsin 1X	1.115 Abs	0.000 ng/mL	LOW	0.050 - 2.000	C03
AB26594	Cylindrospermopsin 1X	1.092 Abs [1.1035] {1.5 C	0.000 ng/mL [0.000]	Low [Low]	0.050 - 2.000	D03
AB26591	Cylindrospermopsin 1X	0.924 Abs	0.103 ng/mL		0.050 - 2.000	E03
AB26591	Cylindrospermopsin 1X	1.114 Abs [1.0190] {13.2	0.000 ng/mL [0.035] {141.4 CV	Low [Low]	0.050 - 2.000	F03
AB26592	Cylindrospermopsin 1X	0.915 Abs	0.111 ng/mL		0.050 - 2.000	G03
AB26592	Cylindrospermopsin 1X	1.126 Abs [1.0205] {14.6	0.000 ng/mL [0.034] {141.4 CV	Low [Low]	0.050 - 2.000	H03
AB26595	Cylindrospermopsin 1X	1.120 Abs	0.000 ng/mL	LOW	0.050 - 2.000	A04
AB26595	Cylindrospermopsin 1X	1.107 Abs [1.1135] {0.8 C	0.000 ng/mL [0.000]	Low [Low]	0.050 - 2.000	B04
AB26595LD	Cylindrospermopsin 1X	0.972 Abs	0.063 ng/mL		0.050 - 2.000	C04
AB26595LD	Cylindrospermopsin 1X	1.017 Abs [0.9945] {3.2 C	0.036 ng/mL [0.048] {38.6 CV	Low [Low]	0.050 - 2.000	D04
20160817LB	Cylindrospermopsin 1X	1.108 Abs	0.000 ng/mL	LOW	0.050 - 2.000	E04
20160817LB	Cylindrospermopsin 1X	1.173 Abs [1.1405] {4.0 C	< 0.000 ng/mL [0.000]	Out(LR) [Low]	0.050 - 2.000	F04

The data in this report is preliminary without a quality control report. This data is not warranted for accuracy or other purposes.

David Jordan

Laboratory Analyst Signature

8/18/16

Date