



Microcystins ELISA Summary Report

Office of Water Quality - Watershed Assessment and Planning Branch

Sample #	Location	Date Collected	Date Analyzed	Conc. (ppb)
AB22633	Mississinewa Lake Miami SRA	8/10/2015	8/12/2015	1.17
AB22634	Potato Creek SP	8/10/2015	8/12/2015	0.32
AB22635	Pokagon SP	8/11/2015	8/12/2015	< 0.150
AB22636	Chain O' Lakes SP	8/11/2015	8/12/2015	0.53
AB22637	Lost Bridge West SRA	8/11/2015	8/12/2015	0.67
AB22638	Lincoln SP	8/9/2015	8/12/2015	< 0.150
AB22639	Ferdinand SF	8/10/2015	8/12/2015	< 0.150
AB22640	Lost Bridge West (Field Duplicate)	8/11/2015	8/12/2015	0.54
AB22641	Field Blank	8/11/2015	8/12/2015	< 0.150
AB22637LD	Lost Bridge West (Lab Duplicate)	8/11/2015	8/12/2015	0.26
20150812LB	Lab Blank	8/11/2015	8/12/2015	< 0.150



Assay Calibration Report

Assay Information

Assay Name: Microcystins ADDA
Assay Mode: 4-Parameter Logistic
Normal: 0.1500 - 5.0000
Units: ng/mL
of decimals: 4
Assay Description:

Controls:

Normal Control

Standards:

Std1, Concentration = 0.0000, Minimum number to use: 2
Std2, Concentration = 0.1500, Minimum number to use: 2
Std3, Concentration = 0.4000, Minimum number to use: 2
Std4, Concentration = 1.0000, Minimum number to use: 2
Std5, Concentration = 2.0000, Minimum number to use: 2
Std6, Concentration = 5.0000, Minimum number to use: 2

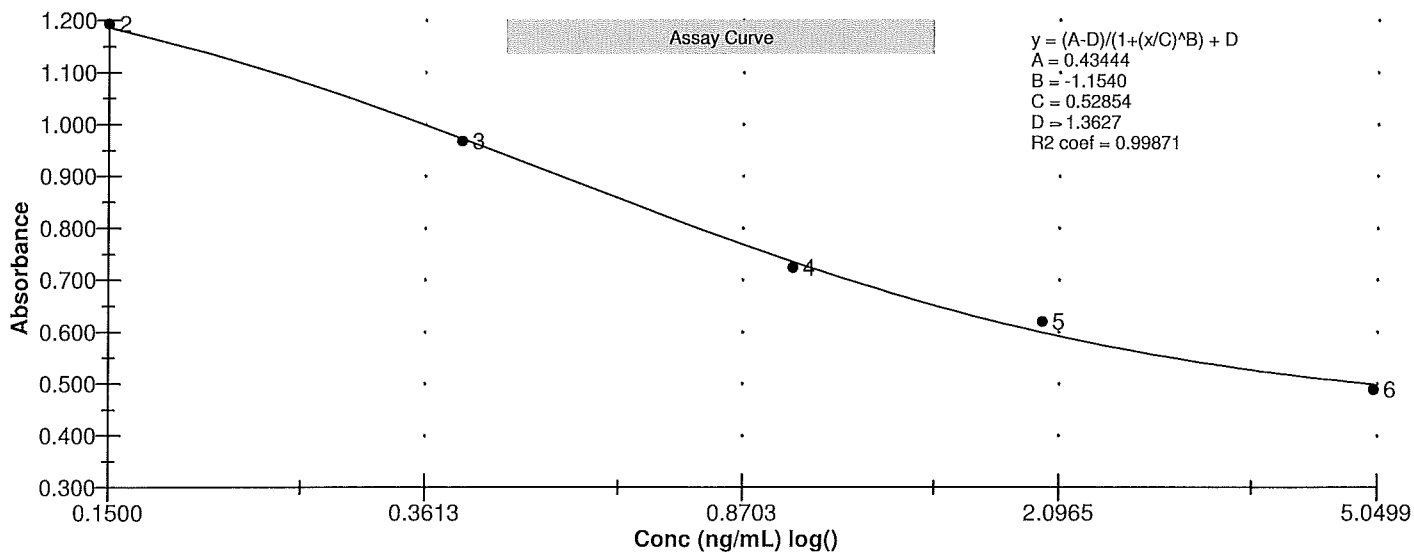
Curve valid interval: 7 days 0 hours

Axis Mode: Y = Abs, X = Log(Conc)

Assay Calibration and Statistics

Name	Absorbance	Concentration	Position
8/12/2015 11:53:29 AM			
Std1	1.338 Abs	0.0233 ng/mL	A01
Std1	1.382 Abs	< 0.0000 ng/mL	B01
Std2	1.165 Abs	0.1702 ng/mL	C01
Std2	1.222 Abs	0.1187 ng/mL	D01
Std3	0.968 Abs	0.4070 ng/mL	F01
Std4	0.737 Abs	0.9920 ng/mL	G01
Std4	0.710 Abs	1.1160 ng/mL	H01
Std5	0.608 Abs	1.8900 ng/mL	A02
Std5	0.633 Abs	1.6335 ng/mL	B02
Std6	0.473 Abs	> 5.0000 ng/mL	C02
Std6	0.505 Abs	4.6000 ng/mL	D02
8/12/2015 11:53:29 AM			
Normal Control	0.830 Abs	0.6840 ng/mL	F02
Normal Control	0.881 Abs	0.5645 ng/mL	E02

Name	Mean Abs	SD Abs	CV Abs	Mean Conc	SD Conc	CV Conc	Diff Conc
Std1	1.360	0.031	2.29				
Std2	1.194	0.040	3.38	0.144	0.036	25.21	-4.00
Std3	0.968			0.407			1.75
Std4	0.724	0.019	2.64	1.054	0.088	8.32	5.40
Std5	0.620	0.018	2.85	1.762	0.181	10.30	-11.90
Std6	0.489	0.023	4.63				-100.00
Normal Control	0.855	0.036	4.22	0.624	0.084	13.54	





Test Report

Test Information

Name/ID	Assay	Absorbance	Concentration	Interpretation	Reference	Position
8/12/2015 11:53:29 AM						
Std1	Microcystins ADDA	1.338 Abs	0.0234 ng/mL		0.0000	A01
Std1	Microcystins ADDA	1.382 Abs	< 0.0000 ng/mL		0.0000	B01
Std2	Microcystins ADDA	1.165 Abs	0.1588 ng/mL		0.1500	C01
Std2	Microcystins ADDA	1.222 Abs	0.1111 ng/mL		0.1500	D01
Std3	Microcystins ADDA	0.968 Abs	0.3810 ng/mL		0.4000	F01
Std4	Microcystins ADDA	0.737 Abs	0.9435 ng/mL		1.0000	G01
Std4	Microcystins ADDA	0.710 Abs	1.0650 ng/mL		1.0000	H01
Std5	Microcystins ADDA	0.608 Abs	1.8450 ng/mL		2.0000	A02
Std5	Microcystins ADDA	0.633 Abs	1.5830 ng/mL		2.0000	B02
Std6	Microcystins ADDA	0.473 Abs	> 5.0000 ng/mL		5.0000	C02
Std6	Microcystins ADDA	0.505 Abs	4.9250 ng/mL		5.0000	D02
Normal Control	Microcystins ADDA	0.881 Abs	0.5645 ng/mL			E02
Normal Control	Microcystins ADDA	0.830 Abs	0.6840 ng/mL			F02
AB22633	Microcystins ADDA	0.680 Abs	1.2825 ng/mL		0.1500 - 5.0000	G02
AB22633	Microcystins ADDA	0.724 Abs	1.0490 ng/mL		0.1500 - 5.0000	H02
AB22634	Microcystins ADDA	1.025 Abs	0.3255 ng/mL		0.1500 - 5.0000	A03
AB22634	Microcystins ADDA	1.031 Abs	0.3177 ng/mL		0.1500 - 5.0000	B03
AB22635	Microcystins ADDA	1.175 Abs	0.1608 ng/mL		0.1500 - 5.0000	C03
AB22635	Microcystins ADDA	1.240 Abs	0.1035 ng/mL	LOW	0.1500 - 5.0000	D03
AB22636	Microcystins ADDA	0.959 Abs	0.4211 ng/mL		0.1500 - 5.0000	E03
AB22636	Microcystins ADDA	0.844 Abs	0.6485 ng/mL		0.1500 - 5.0000	F03
AB22637	Microcystins ADDA	0.811 Abs	0.7360 ng/mL		0.1500 - 5.0000	G03
AB22637	Microcystins ADDA	0.867 Abs	0.5946 ng/mL		0.1500 - 5.0000	H03
AB22638	Microcystins ADDA	1.346 Abs	0.0165 ng/mL	LOW	0.1500 - 5.0000	A04
AB22638	Microcystins ADDA	1.400 Abs	< 0.0000 ng/mL	Out(LR)	0.1500 - 5.0000	B04
AB22639	Microcystins ADDA	1.445 Abs	< 0.0000 ng/mL	Out(LR)	0.1500 - 5.0000	C04
AB22639	Microcystins ADDA	1.391 Abs	< 0.0000 ng/mL	Out(LR)	0.1500 - 5.0000	D04
AB22640	Microcystins ADDA	0.873 Abs	0.5815 ng/mL		0.1500 - 5.0000	E04
AB22640	Microcystins ADDA	0.911 Abs	0.5045 ng/mL		0.1500 - 5.0000	F04
AB22641	Microcystins ADDA	1.439 Abs	< 0.0000 ng/mL	Out(LR)	0.1500 - 5.0000	G04
AB22641	Microcystins ADDA	1.521 Abs	< 0.0000 ng/mL	Out(LR)	0.1500 - 5.0000	H04
AB22925	Microcystins ADDA	0.285 Abs	> 5.0000 ng/mL	Out(LR)	0.1500 - 5.0000	A05
AB22925	Microcystins ADDA	0.295 Abs	> 5.0000 ng/mL	Out(LR)	0.1500 - 5.0000	B05
AB22926	Microcystins ADDA	0.252 Abs	> 5.0000 ng/mL	Out(LR)	0.1500 - 5.0000	C05
AB22926	Microcystins ADDA	0.269 Abs	> 5.0000 ng/mL	Out(LR)	0.1500 - 5.0000	D05
AB229254X	Microcystins ADDA	0.342 Abs	> 5.0000 ng/mL	Out(LR)	0.1500 - 5.0000	E05
AB229254X	Microcystins ADDA	0.350 Abs	> 5.0000 ng/mL	Out(LR)	0.1500 - 5.0000	F05
AB229264X	Microcystins ADDA	0.298 Abs	> 5.0000 ng/mL	Out(LR)	0.1500 - 5.0000	G05
AB229264X	Microcystins ADDA	0.302 Abs	> 5.0000 ng/mL	Out(LR)	0.1500 - 5.0000	H05
AB22637LD	Microcystins ADDA	1.054 Abs	0.2890 ng/mL		0.1500 - 5.0000	A06
AB22637LD	Microcystins ADDA	1.102 Abs	0.2340 ng/mL		0.1500 - 5.0000	B06
20150812LB	Microcystins ADDA	1.412 Abs	< 0.0000 ng/mL	Out(LR)	0.1500 - 5.0000	C06
20150812LB	Microcystins ADDA	1.441 Abs	< 0.0000 ng/mL	Out(LR)	0.1500 - 5.0000	D06

The data in this report is preliminary without a quality control report. This data is not warranted for accuracy or other purposes.

Betty Rutledge

Laboratory Analyst Signature

8/13/15

Date