



Microcystins ELISA Summary Report

Office of Water Quality - Watershed Assessment and Planning Branch

Sample #	Location	Date Collected	Date Analyzed	Conc. (ppb)
AB30000	Lost Bridge West SRA	8/1/2017	8/2/2017	< 0.30
AB30000LD	Lost Bridge (Lab Duplicate)	8/1/2017	8/2/2017	< 0.30
AB30001	Chain O' Lakes SP	8/1/2017	8/2/2017	< 0.30
AB30002	Potato Creek SP	8/1/2017	8/2/2017	< 0.30
AB30003	Mississinewa Lake Miami SRA	8/1/2017	8/2/2017	< 0.30
AB29998	Potato Creek (Field Duplicate)	8/1/2017	8/2/2017	< 0.30
AB29999	Field Blank	8/1/2017	8/2/2017	< 0.30
20170801LB	Lab Blank	8/1/2017	8/2/2017	< 0.30



Assay Calibration Report

Assay Information

Assay Name: Microcystins ADDA
 Assay Mode: 4-Parameter Logistic
 Normal: 0.1500 - 5.0000
 Units: ng/mL
 # of decimals: 4
 Assay Description:

Controls:

Normal Control

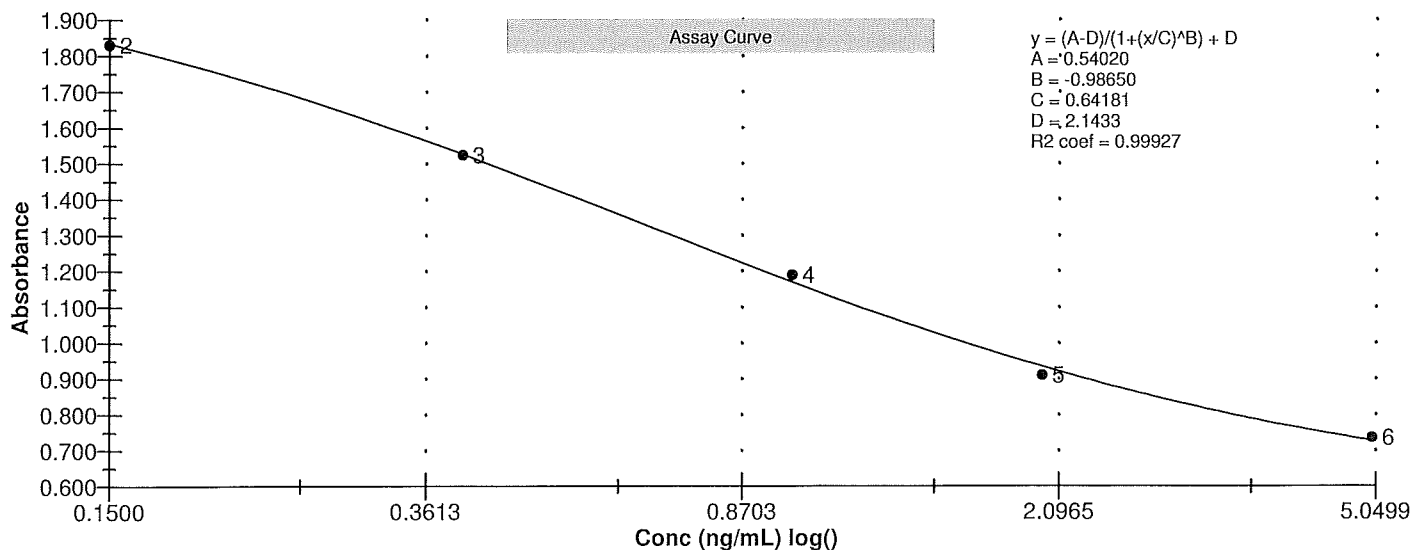
Standards:

Std1, Concentration = 0.0000, Minimum number to use: 2
 Std2, Concentration = 0.1500, Minimum number to use: 2
 Std3, Concentration = 0.4000, Minimum number to use: 2
 Std4, Concentration = 1.0000, Minimum number to use: 2
 Std5, Concentration = 2.0000, Minimum number to use: 2
 Std6, Concentration = 5.0000, Minimum number to use: 2
 Curve valid interval: 7 days 0 hours
 Axis Mode: Y = Abs, X = Log(Conc)

Assay Calibration and Statistics

Name	Absorbance	Concentration	Position
8/2/2017 1:46:44 PM			
Std1	2.120 Abs	0.0089 ng/mL	A01
Std1	2.170 Abs	< 0.0000 ng/mL	B01
Std2	1.832 Abs	0.1516 ng/mL	C01
Std2	1.829 Abs	0.1535 ng/mL	D01
Std3	1.499 Abs	0.4290 ng/mL	E01
Std3	1.546 Abs	0.3785 ng/mL	F01
Std4	1.164 Abs	1.0140 ng/mL	G01
Std4	1.213 Abs	0.8915 ng/mL	H01
Std5	0.923 Abs	2.0790 ng/mL	A02
Std5	0.898 Abs	2.2730 ng/mL	B02
Std6	0.721 Abs	> 5.0000 ng/mL	C02
Std6	0.751 Abs	4.3500 ng/mL	D02
8/2/2017 1:46:44 PM			
Normal Control	1.410 Abs	0.5397 ng/mL	F02
Normal Control	1.308 Abs	0.6990 ng/mL	E02

Name	Mean Abs	SD Abs	CV Abs	Mean Conc	SD Conc	CV Conc	Diff Conc
Std1	2.145	0.035	1.65				
Std2	1.831	0.002	0.12	0.153	0.001	0.88	2.00
Std3	1.523	0.033	2.18	0.404	0.036	8.84	1.00
Std4	1.189	0.035	2.92	0.953	0.087	9.09	-4.70
Std5	0.910	0.018	1.94	2.176	0.137	6.30	8.80
Std6	0.736	0.021	2.88				-100.00
Normal Control	1.359	0.072	5.31	0.619	0.113	18.19	





Test Report

Test Information

Name/ID	Assay	Absorbance	Concentration	Interpretation	Reference	Position
8/2/2017 1:46:44 PM						
Std1	Microcystins ADDA	2.120 Abs	0.0089 ng/mL		0.0000	A01
Std1	Microcystins ADDA	2.170 Abs	< 0.0000 ng/mL		0.0000	B01
Std2	Microcystins ADDA	1.832 Abs	0.1516 ng/mL		0.1500	C01
Std2	Microcystins ADDA	1.829 Abs	0.1535 ng/mL		0.1500	D01
Std3	Microcystins ADDA	1.499 Abs	0.4290 ng/mL		0.4000	E01
Std3	Microcystins ADDA	1.546 Abs	0.3785 ng/mL		0.4000	F01
Std4	Microcystins ADDA	1.164 Abs	1.0140 ng/mL		1.0000	G01
Std4	Microcystins ADDA	1.213 Abs	0.8915 ng/mL		1.0000	H01
Std5	Microcystins ADDA	0.923 Abs	2.0790 ng/mL		2.0000	A02
Std5	Microcystins ADDA	0.898 Abs	2.2730 ng/mL		2.0000	B02
Std6	Microcystins ADDA	0.721 Abs	> 5.0000 ng/mL		5.0000	C02
Std6	Microcystins ADDA	0.751 Abs	4.3500 ng/mL		5.0000	D02
Normal Control	Microcystins ADDA	1.308 Abs	0.6990 ng/mL			E02
Normal Control	Microcystins ADDA	1.410 Abs	0.5397 ng/mL			F02
AB30000	Microcystins ADDA	1.748 Abs	0.2069 ng/mL		0.1500 - 5.0000	G02
AB30000	Microcystins ADDA	1.837 Abs [1.7925] {3.5 C	0.1486 ng/mL [0.1767] {23.2 C	LOW	0.1500 - 5.0000	H02
AB30000LD	Microcystins ADDA	1.816 Abs	0.1616 ng/mL		0.1500 - 5.0000	A03
AB30000LD	Microcystins ADDA	1.770 Abs [1.7930] {1.8 C	0.1917 ng/mL [0.1763] {12.0 C		0.1500 - 5.0000	B03
AB30001	Microcystins ADDA	1.840 Abs	0.1468 ng/mL	LOW	0.1500 - 5.0000	C03
AB30001	Microcystins ADDA	1.838 Abs [1.8390] {0.1 C	0.1480 ng/mL [0.1474] {0.6 CV	Low [Low]	0.1500 - 5.0000	D03
AB30002	Microcystins ADDA	2.006 Abs	0.0582 ng/mL	LOW	0.1500 - 5.0000	E03
AB30002	Microcystins ADDA	2.063 Abs [2.0345] {2.0 C	0.0325 ng/mL [0.0451] {40.1 C	Low [Low]	0.1500 - 5.0000	F03
AB30003	Microcystins ADDA	2.001 Abs	0.0606 ng/mL	LOW	0.1500 - 5.0000	G03
AB30003	Microcystins ADDA	2.116 Abs [2.0585] {4.0 C	0.0105 ng/mL [0.0345] {99.7 C	Low [Low]	0.1500 - 5.0000	H03
AB29998	Microcystins ADDA	2.067 Abs	0.0308 ng/mL	LOW	0.1500 - 5.0000	A04
AB29998	Microcystins ADDA	2.200 Abs [2.1335] {4.4 C	< 0.0000 ng/mL [0.0037]	Out(LR) [Low]	0.1500 - 5.0000	B04
AB29999	Microcystins ADDA	2.267 Abs	< 0.0000 ng/mL	Out(LR)	0.1500 - 5.0000	C04
AB29999	Microcystins ADDA	2.239 Abs [2.2530] {0.9 C	< 0.0000 ng/mL [< 0.0000]	Out(LR) [Out(LR)]	0.1500 - 5.0000	D04
AB30004	Microcystins ADDA	2.138 Abs	0.0020 ng/mL	LOW	0.1500 - 5.0000	E04
AB30004	Microcystins ADDA	2.158 Abs [2.1480] {0.7 C	< 0.0000 ng/mL [< 0.0000]	Out(LR) [Out(LR)]	0.1500 - 5.0000	F04
20170801LB	Microcystins ADDA	2.190 Abs	< 0.0000 ng/mL	Out(LR)	0.1500 - 5.0000	G04
20170801LB	Microcystins ADDA	2.260 Abs [2.2250] {2.2 C	< 0.0000 ng/mL [< 0.0000]	Out(LR) [Out(LR)]	0.1500 - 5.0000	H04

The data in this report is preliminary without a quality control report. This data is not warranted for accuracy or other purposes.

David Jordan for Betty Ratchiff
Laboratory Analyst Signature

8/2/2017
Date