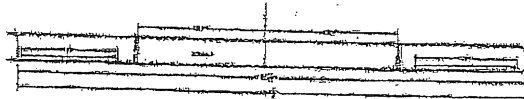
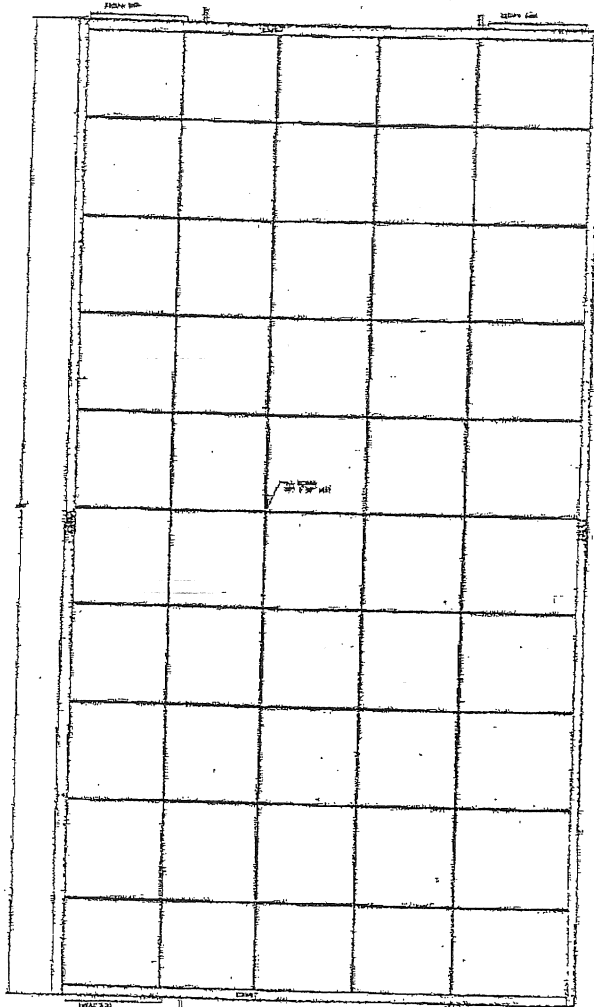


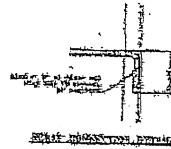
JUN-18-2008 10:04 AM FROM:

TO: 1317632217

Attachment A

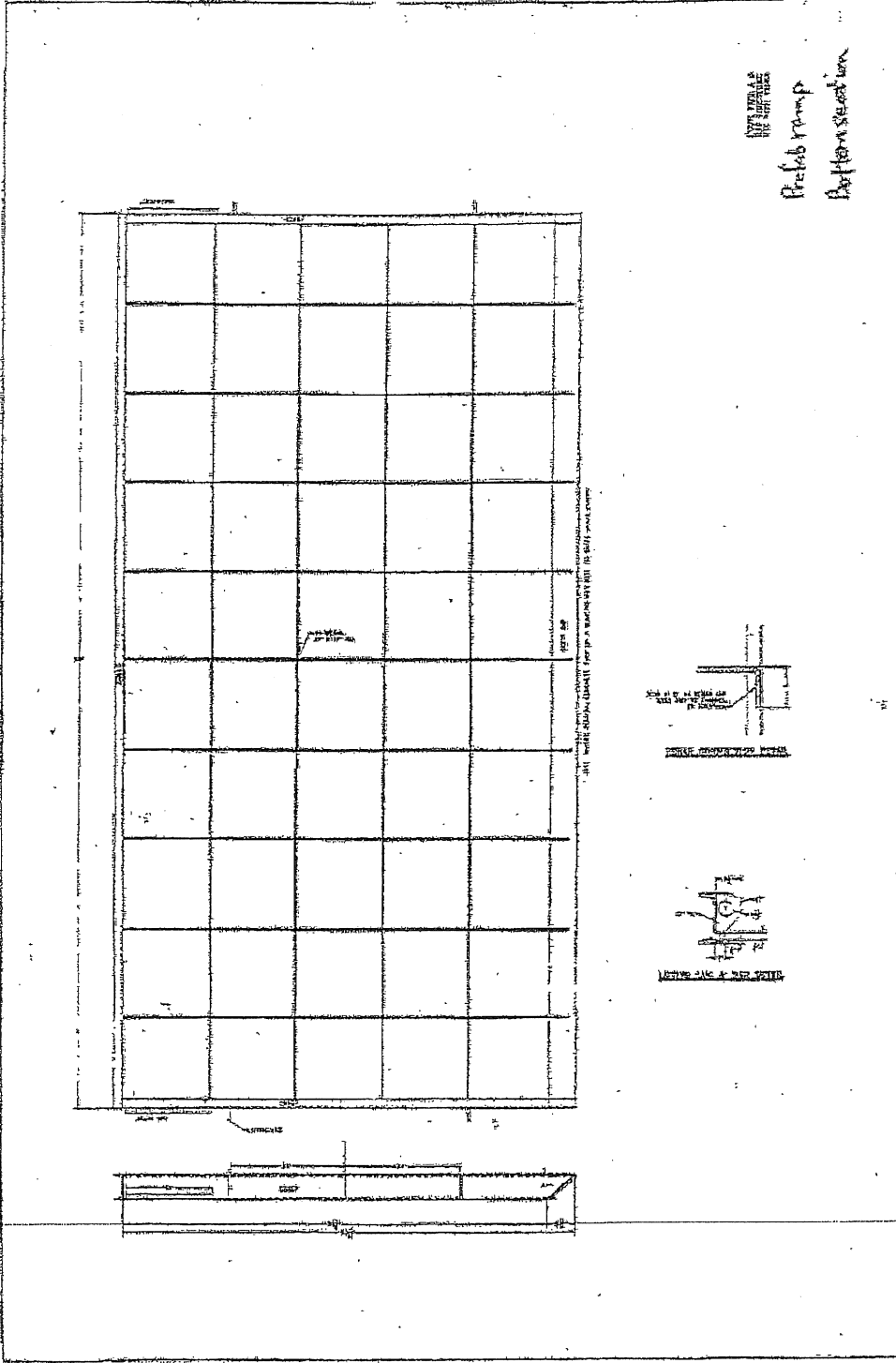


PROF. J. L. CAMP
PROF. J. L. CAMP
PROF. J. L. CAMP
PROF. J. L. CAMP
PROF. J. L. CAMP
PROF. J. L. CAMP
PROF. J. L. CAMP
PROF. J. L. CAMP
PROF. J. L. CAMP
PROF. J. L. CAMP



NOTES
TO THE
OWNER

Prefab ramp
Bottom section

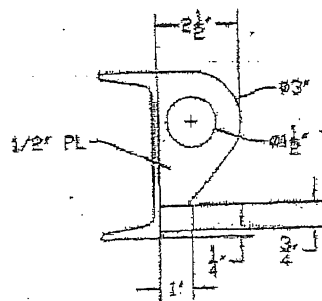


BEND 4" OF #4 REBAR AND
WELD 100% TO CHANNEL
OR BARSTOCK

REBAR CONNECTION DETAIL

Enlarged Details

Both

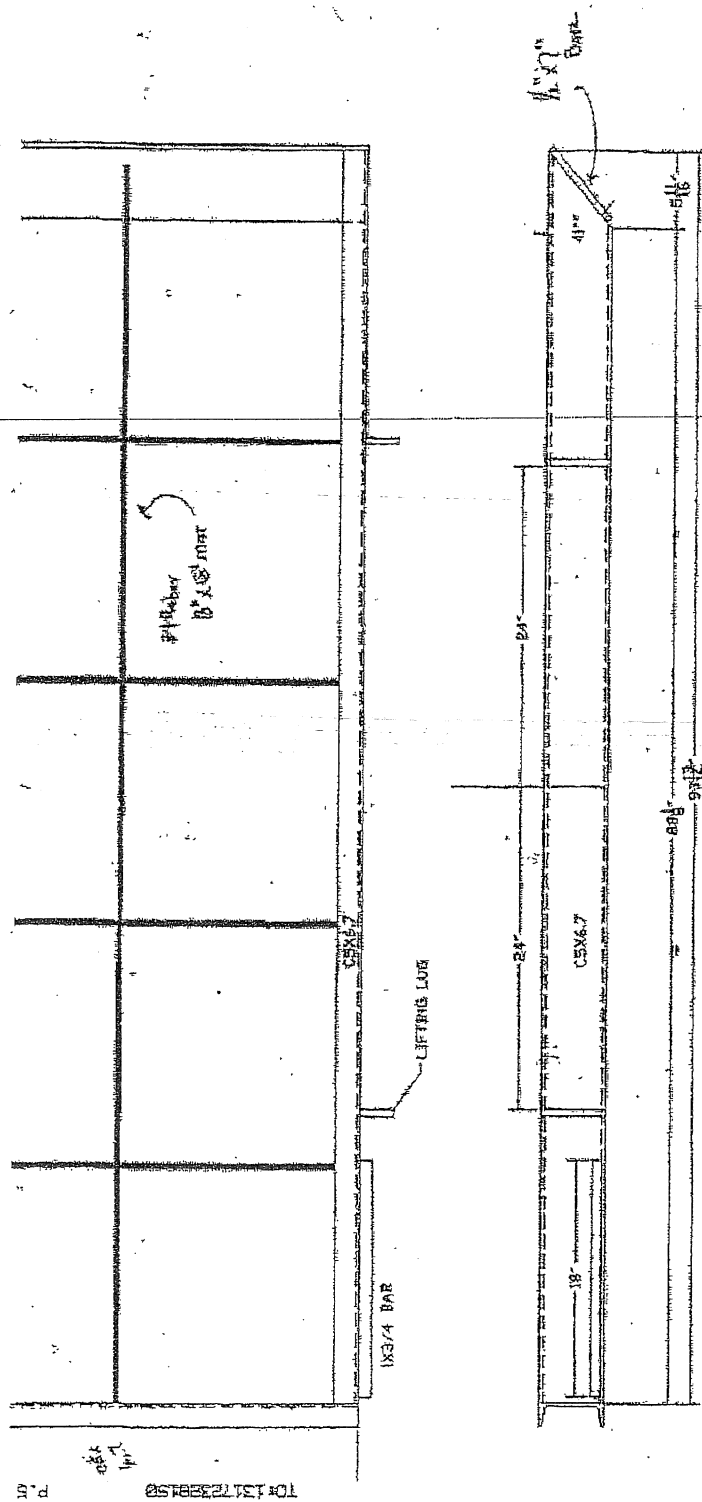


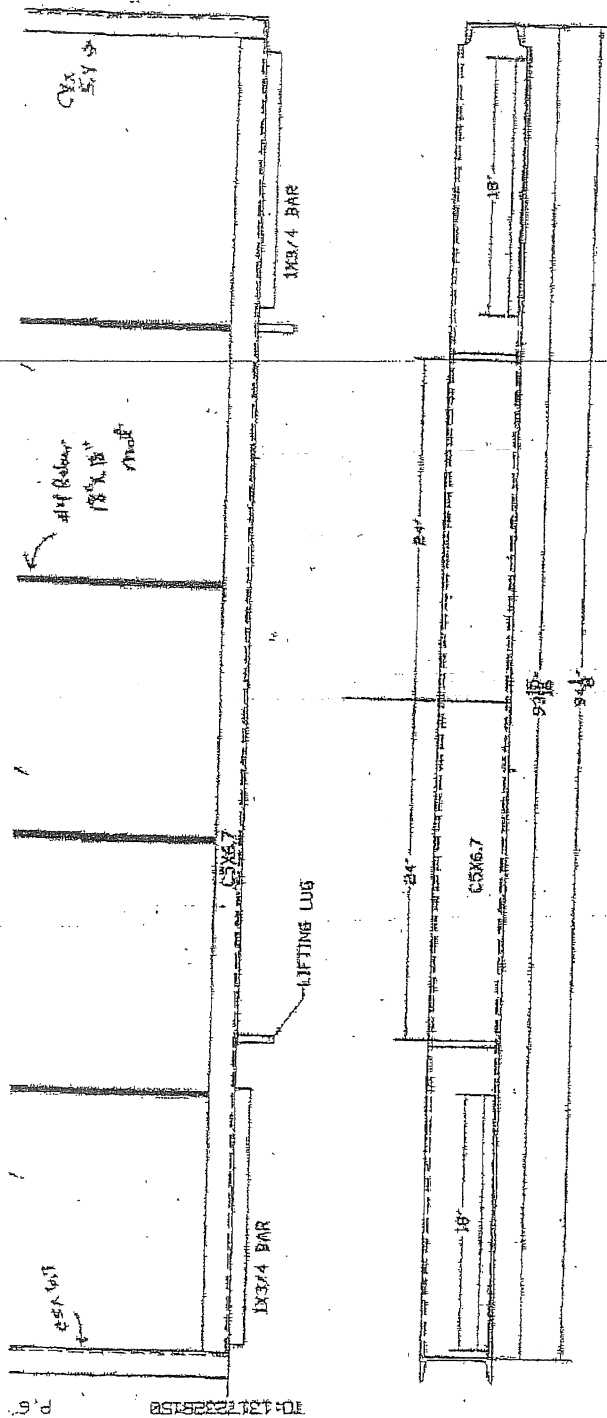
LIFTING LUG & BAR DETAIL

10-13-2008 10:04:15

10-13-2008 10:04:15

For King and Queen Dada 1.15 Bottom Section





ENLARGED DETAILS - Top Section

JUN-18-2008 10:08 AM FROM:

TO: 4212228150 P.67

