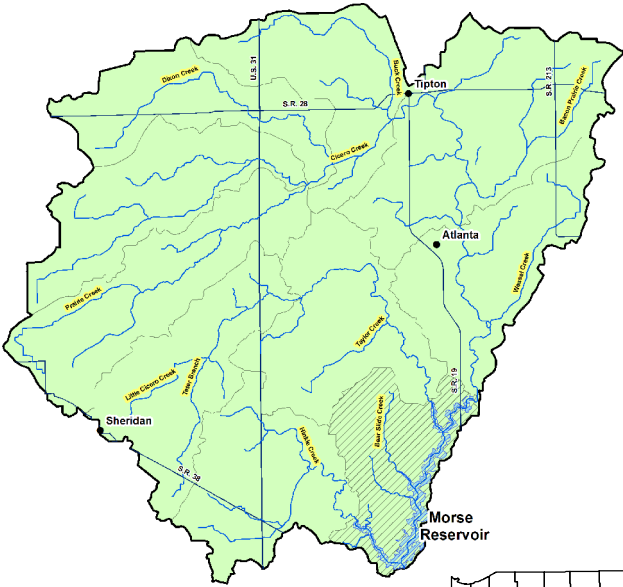


Morse Reservoir Nutrient and Sediment Load Reductions

Accomplished By Private Landowners and the Indiana Conservation Partnership



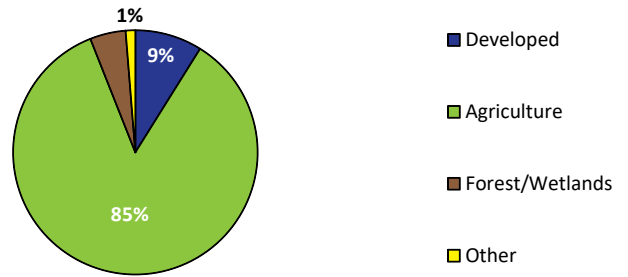
Morse Reservoir
 HUC: 051202010601
 HUC: 051202010602
 HUC: 051202010603
 HUC: 051202010604
 HUC: 051202010605
 HUC: 051202010606
 HUC: 051202010607
 HUC: 051202010608
 HUC: 051202010609
 HUC: 05120201080110



Legend

- Cities
- Streams
- Highways
- Morse Reservoir
- HUC 14 Watersheds
- HUC 12 Watersheds
- Morse Reservoir Watersheds

Major Land Uses in the Morse Reservoir Watershed



*Land use calculated using 2016 NASS Cropland Data Layer

Top practices include use of cover crops, early successional habitat development/management, residue and tillage management, no-till. In the year 2016, conservation practices in this watershed reduced the volumes below from entering Morse Reservoir.

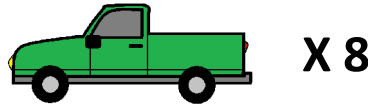
Sediment Reduced: 11,565,863 lbs.

Which is enough to fill 58 standard freight cars!



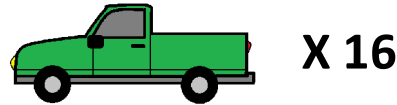
Phosphorus Reduced: 8,137 lbs.

Which is enough to fill 8 pick-ups with an 8' bed (maximum load)!



Nitrogen Reduced: 15,784 lbs.

Which is enough to fill 16 pick-ups with an 8' bed (maximum load)!



**Practices do not include the many unassisted practices designed and installed by private landowners without ICP assistance.

*Nutrient estimates only consider sediment bound N and P, not dissolved.

*Load reductions are based off the EPA's Region 5 Load Reduction Model

Calendar Year	Practices Installed	Active Practices	Sediment Reduction (lbs)	Phosphorus Reduction (lbs)	Nitrogen Reduction (lbs)
2013	25	25	2,809,249	1,870	3,727
2014	35	38	2,889,854	1,922	3,836
2015	17	25	2,501,232	1,882	3,529
2016	25	40	3,365,528	2,463	4,692
13-16	102		11,565,863	8,137	15,784

*The "practices installed" column indicates the number of newly installed practices within a given calendar year, while the "active practices" column indicates the number of practices that are actively reducing sediment, nitrogen, and phosphorus loading regardless of the year of installation.

For more information visit: <http://www.in.gov/isda/2991.htm> or contact ISDANutrientReduction@isda.in.gov

Last Updated: 11/27/2017

Data provided by: Indiana State Department of Agriculture, Indiana Department of Environmental Management, Indiana Department of Natural Resources, Indiana Soil and Water Conservation Districts, and the USDA Natural Resources Conservation Service.