

# Indiana Task Force on Public Defense

## Public Defense Structure

Indiana is a county-based, county-funded system with optional state support

### State Resources

Indiana Public Defender Commission

Indiana Public Defender Council

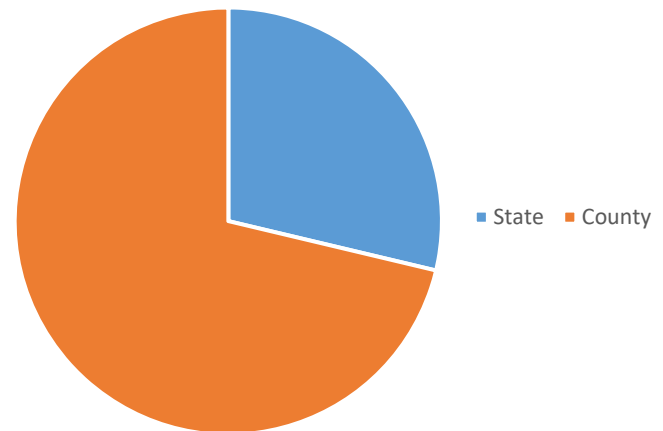
Public Defender of Indiana

### County Resources

Property taxes

Supplemental Public Defender Fund

Funding Sources for Trial and Appellate Level Public Defense Services (2015)



**Total: \$76,449,852.00**

Note: There may be reason to believe the true amount spent may be higher due to underreporting

State-level resources are split between three separate agencies

#### State Public Defender

- IN Supreme Court agency
- **Represents people in PCR representation**
- Assists in finding appellate representation

#### Public Defender Commission

- Independent judicial agency
- **Provides reimbursement to counties**
- Drafts and enforces standards

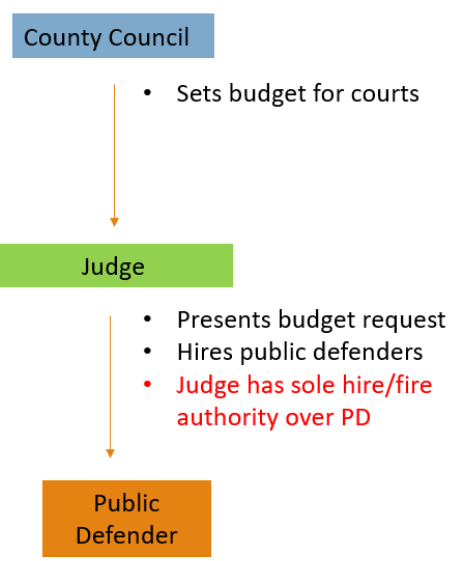
#### Public Defender Council

- Independent judicial agency
- **Advocates for public defenders**
- Provides research, training and support

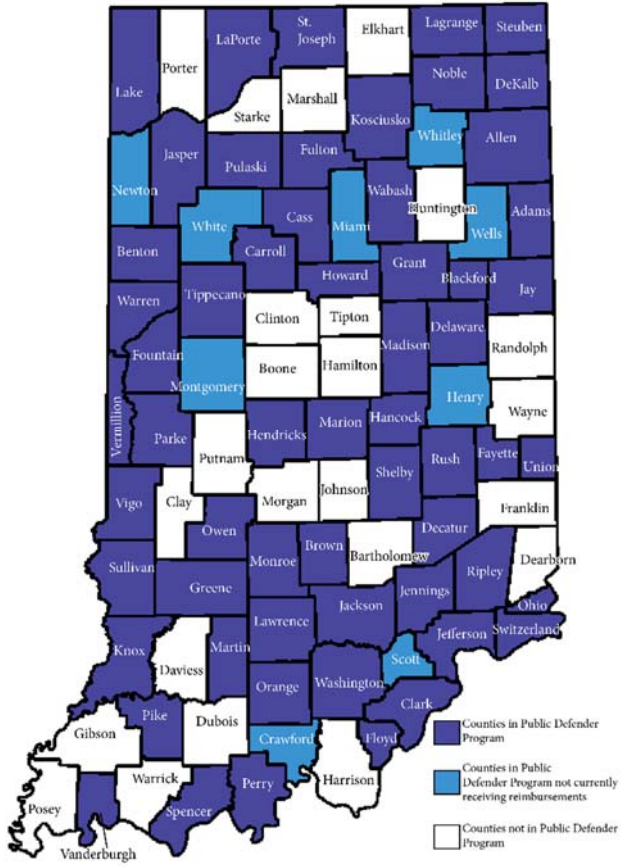
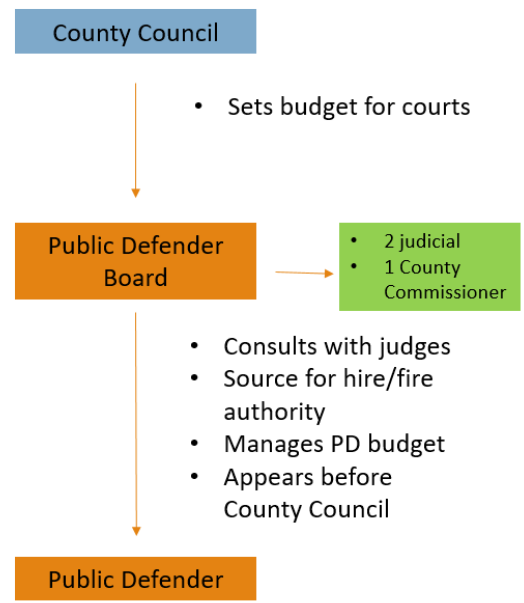
County governments are NOT required to use any services provided by the Council or Commission unless they agree to participate.

# County Public Defense Structure

## Typical Non-Commission County



## Commission Counties



## How a county joins the Commission

