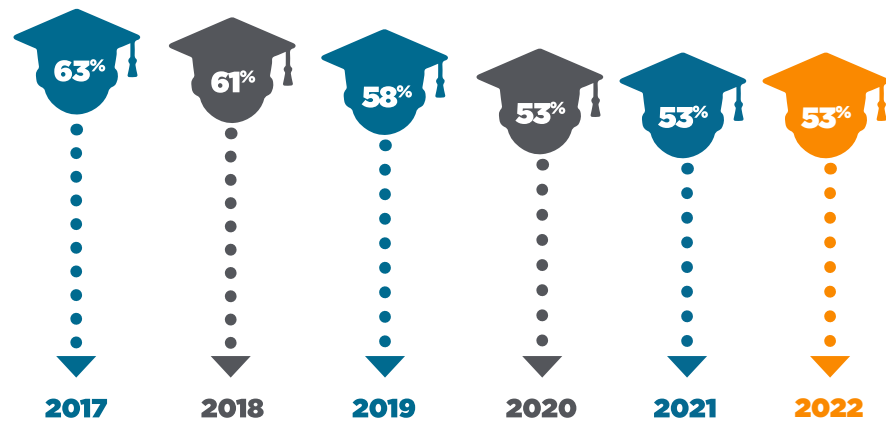




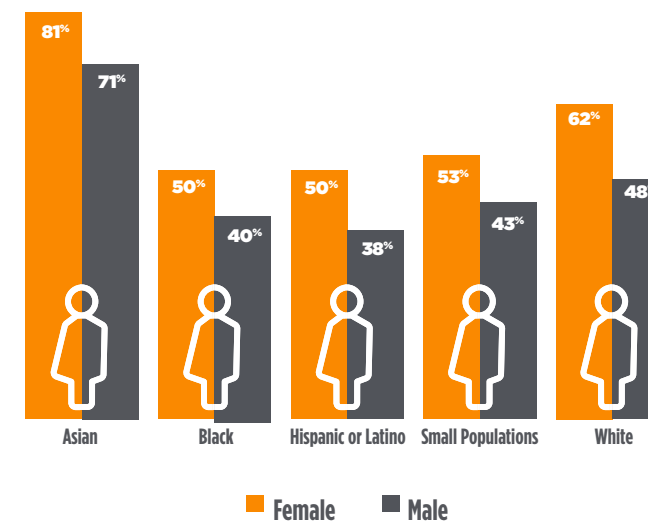
## HIGH SCHOOLERS GOING STRAIGHT TO COLLEGE

Since 2020, Indiana's college-going rate held steady at 53%.



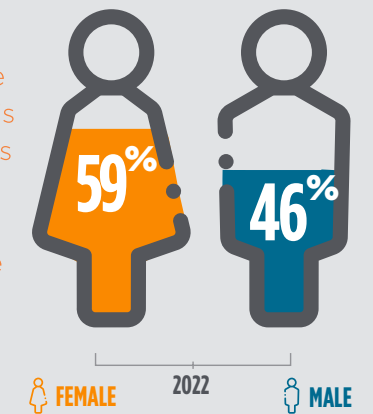
## COLLEGE-GOING

Across all races and ethnicities, women are more likely to go to college right after high school.

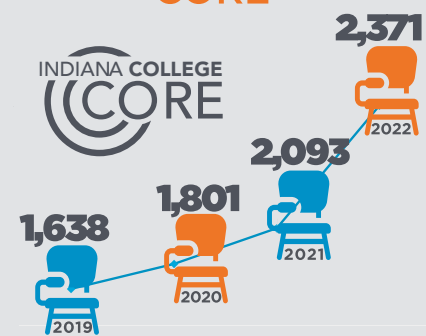


## GENDER GAP College-Going

On average, men continue to go to college at a lower rate than women. Indiana is not alone in facing this issue. On a national scale, 72% of female students between the ages of 18-24 were enrolled in college in 2022 compared to 60% of their male counterparts (Midwestern Higher Education Compact, 2024).



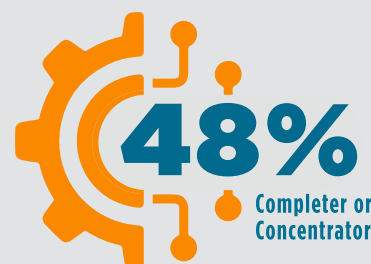
## INDIANA COLLEGE CORE



The number of students earning the Indiana College Core has grown significantly since its creation in 2013 with **2,371 students** in the high school class of 2022 earning the Indiana College Core in 2022.

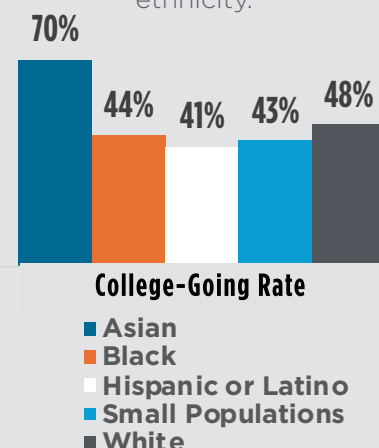
## CTE PARTICIPATION

Nearly half of the high school class of 2022 graduated with CTE concentrator or completer status. This means students have completed at least 6 credits in a CTE pathway, providing them the opportunity to learn valuable skills and work toward credentials for their future career path.



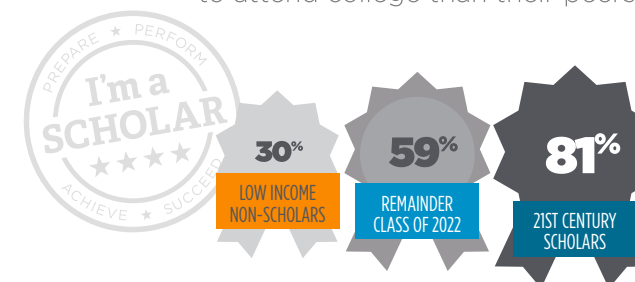
## CTE COLLEGE-GOING RATE

The college-going rate for Career and Technical Education (CTE) completers and concentrators in 2022 was **47%**. Similar to Indiana's overall college-going rate, gaps persist among race and ethnicity.



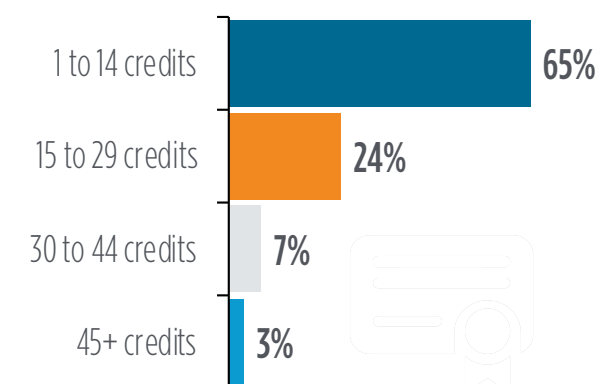
## SOCIOECONOMIC STATUS

**21st Century Scholars** are more likely to attend college than their peers.



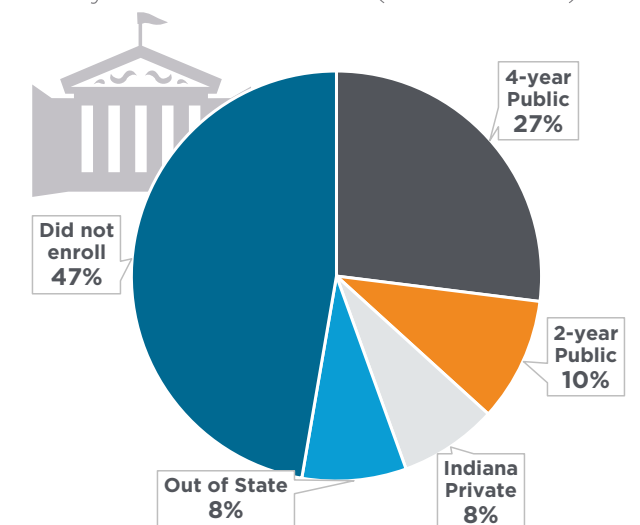
## EARLY COLLEGE CREDITS EARNED

62% of 2022 high school graduates earned some form of early college credit such as dual credit or Advanced Placement. Of those, who earned college credit, **65% graduated high school with 1 to 14 credits.**



## POST HIGH SCHOOL GRADUATION ENROLLMENT

by Institution Sector (2022 Cohort).



**“College”** covers the range of education options beyond a high school diploma, including technical and professional credentials of less than one year up through a bachelor's degree.