



INDIANA COMMISSION for HIGHER EDUCATION

Commission for Higher Education
14 Gubernatorial Appointees
I.C. 21-18-2

Commissioner
Chris Lowery

Senior Advisor to the Commissioner
Ken Sauer

Executive Assistant to the Commissioner
Rachel Zajac

Board for Proprietary Education
5 Gubernatorial Appointees, 2 Ex Officio
IC 21-18.5-5

Senior Associate Commissioner and Chief Academic Officer
Matt Butler

Senior Associate Commissioner and Chief Financial Officer
Seth Hinshaw

Senior Associate Commissioner and Chief of Staff
Josh Garrison

Senior Associate Commissioner and Chief Program Officer
Michelle Ashcraft

- Director for Academic Affairs and Talent Solutions
Jordan Gusich
- Director for Academic Affairs and Transfer
Vacant
- Director for State Authorization and Reciprocity
Ross Miller

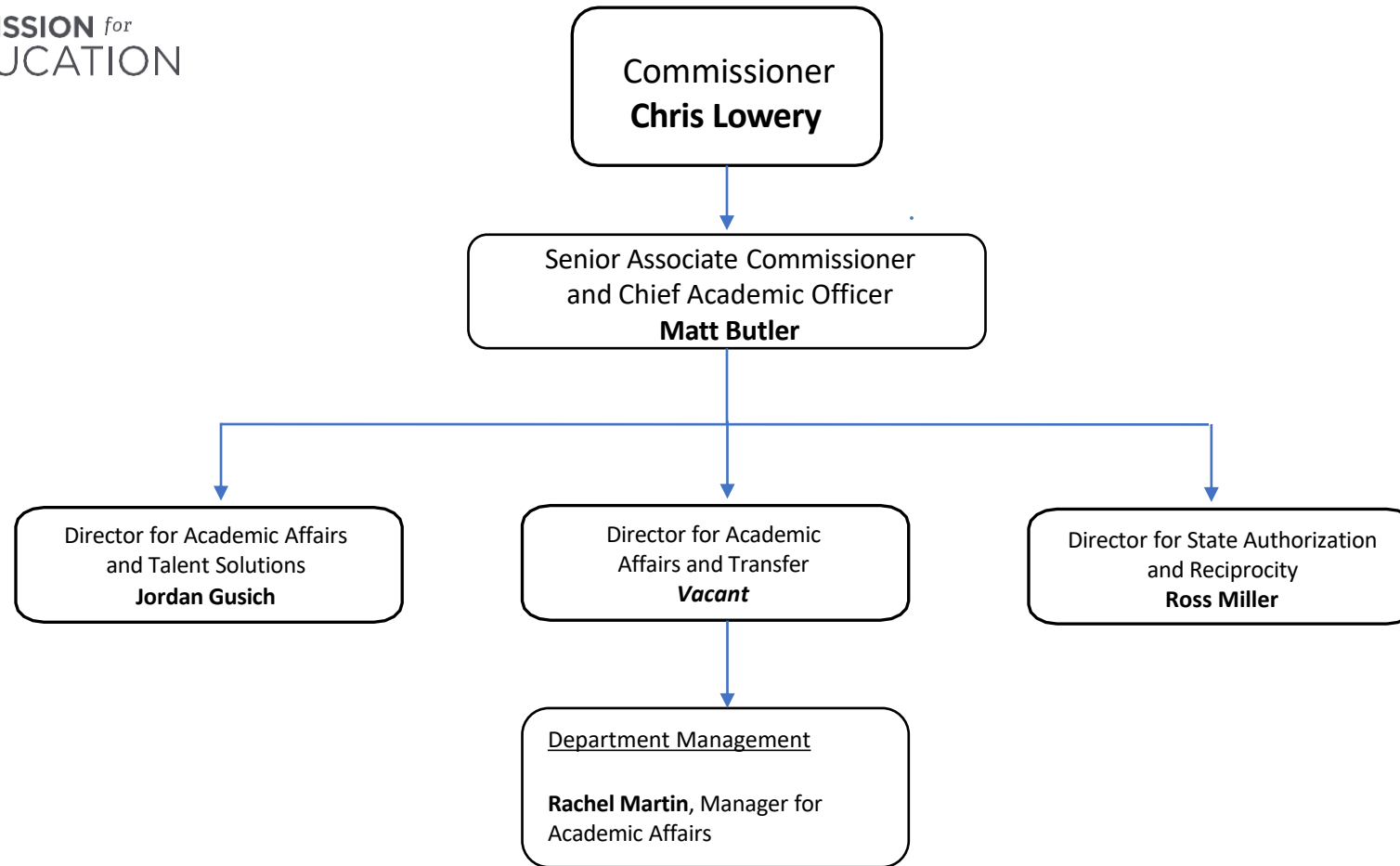
- Associate Commissioner for Business Intelligence
Brooke Kile
- Associate Commissioner for Business Enterprise Solutions and Chief Technology Officer
Rajinder Heir
- Controller
Mike Wardell
- Director of Finance
Vacant

- Associate Commissioner for Adult Strategy
Stacy Townsley
- Associate Commissioner for Marketing and Communications
Allison Kuehr
- Assistant Commissioner for Public Policy and Strategic Partnerships
Greg Harrell

- Associate Commissioner for K-12 Strategy
Tony Harl
- State Director for Financial Aid
Angel McAllister
- Director for K-12 Outreach and Postsecondary Transitions
Hilary Deardorff

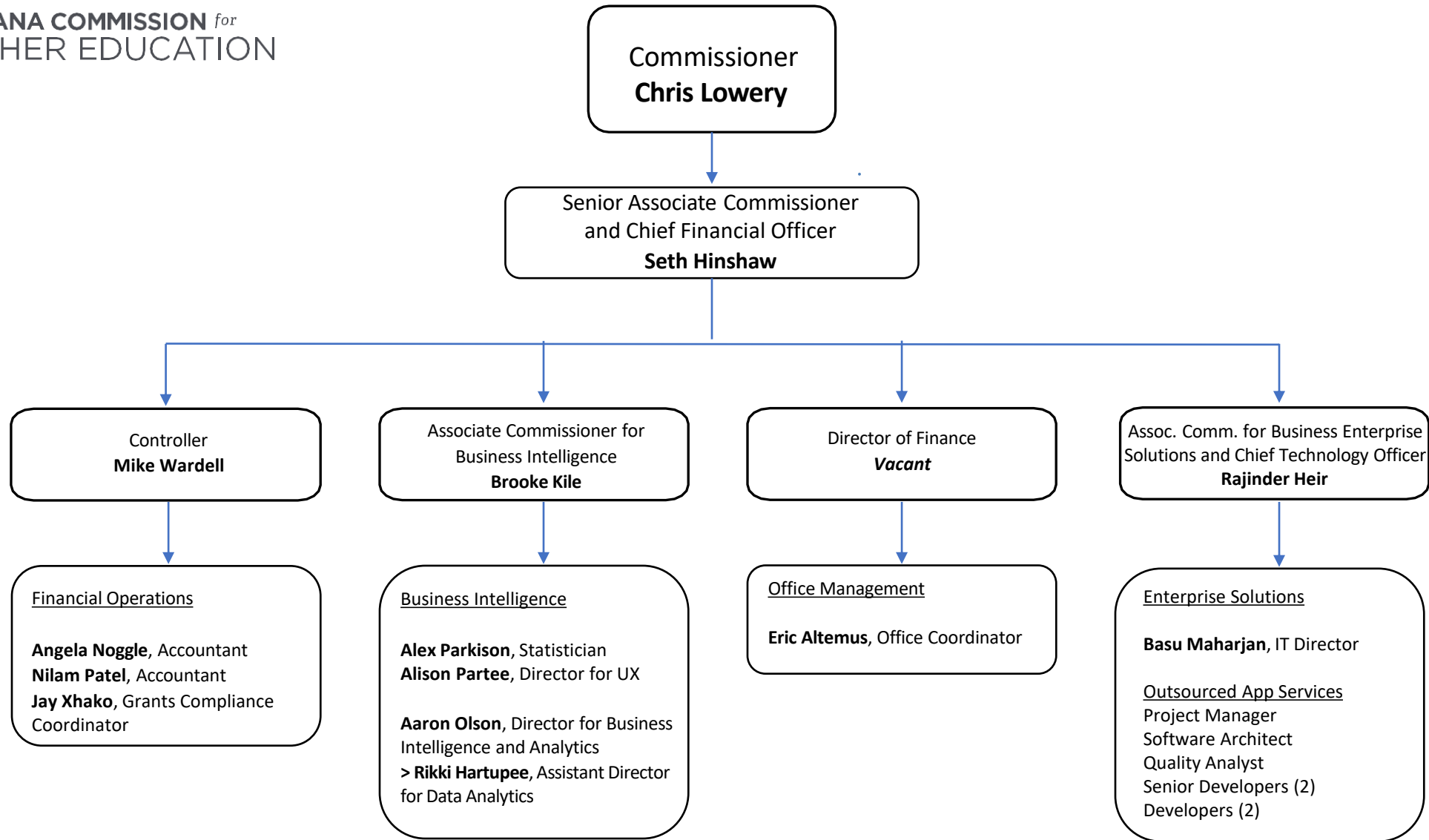


INDIANA COMMISSION *for*
HIGHER EDUCATION



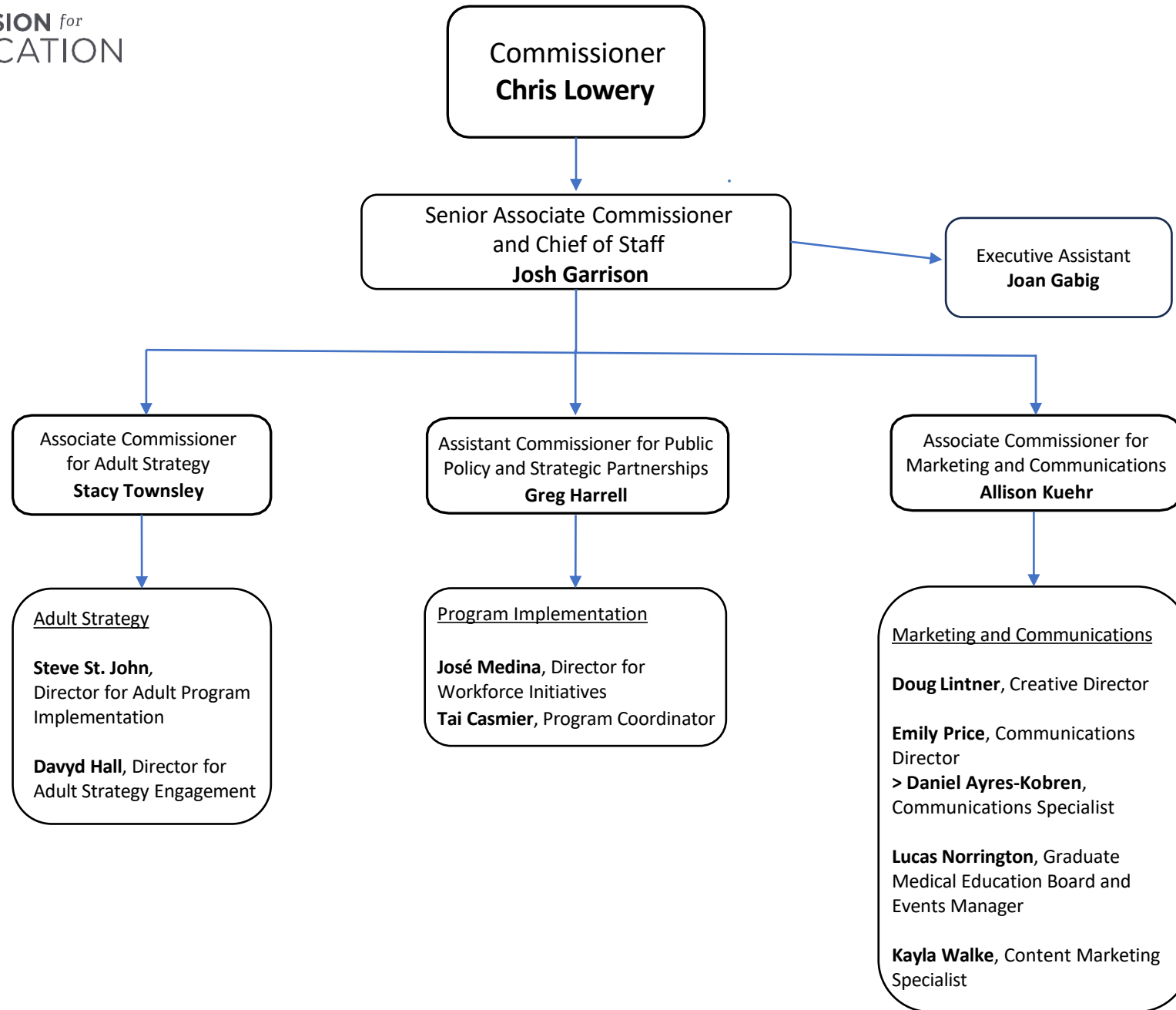


INDIANA COMMISSION *for*
HIGHER EDUCATION





INDIANA COMMISSION *for*
HIGHER EDUCATION





INDIANA COMMISSION *for*
HIGHER EDUCATION

**Commissioner
Chris Lowery**

**Senior Associate Commissioner
and Chief Program Officer
Michelle Ashcraft**

**Associate Commissioner
for K-12 Strategy
Tony Harl**

**Director for K-12 Outreach and
Postsecondary Transitions
Hilary Deardorff**

**State Director for
Financial Aid
Angel McAllister**

Career and Technical Education

Sam Rourke, Assistant Commissioner for Career and Technical Education

- > **Linsay Osos**, Director for CTE Programming
 - >> **Charles Snodgrass**, CTE Program Manager
 - >> **Miaya Scott**, CTE Program Manager
 - >> **Mikayla Moore**, CTE Program Manager
- > **Laura Tucker**, Director for CTE Grants Administration and Monitoring
 - >> **Kathleen Ash**, CTE Grants Administration Manager
- > **Jedd Vance**, InTERS Specialist

Chris Deaton, Director for CTE Performance and Accountability

K-12 Outreach

Zachary Cullum, Assistant Director for K-12 Outreach (Southwest)

- > **Elizabeth Moffett**, East
- > **Ivon Perez Paulino**, Northwest
- > **Morgan Kurtz**, West

Senior Outreach Coordinators

Verleash Jones, Northeast
Amy Parraga, North Central

Heather Cooper, Southeast
Berenice Tenorio, Central
Bukola Fasipe, Central

Postsecondary Transitions

Kate Marling, Postsecondary Transitions Manager
Victoria Phair, Postsecondary Transitions Manager

State Financial Aid

Michelle Rogers, Director for Financial Aid Operations

Caitlin Mahoney, Director for Financial Aid Support Center

- > **Yvonne Heflin**, Financial Aid Support Specialist
- > **Raven Moody**, Financial Aid Support Specialist
- > **Joselin Zavala**, Financial Aid Support Specialist
- > **Arlen Taliaferro**, Financial Aid Support Specialist