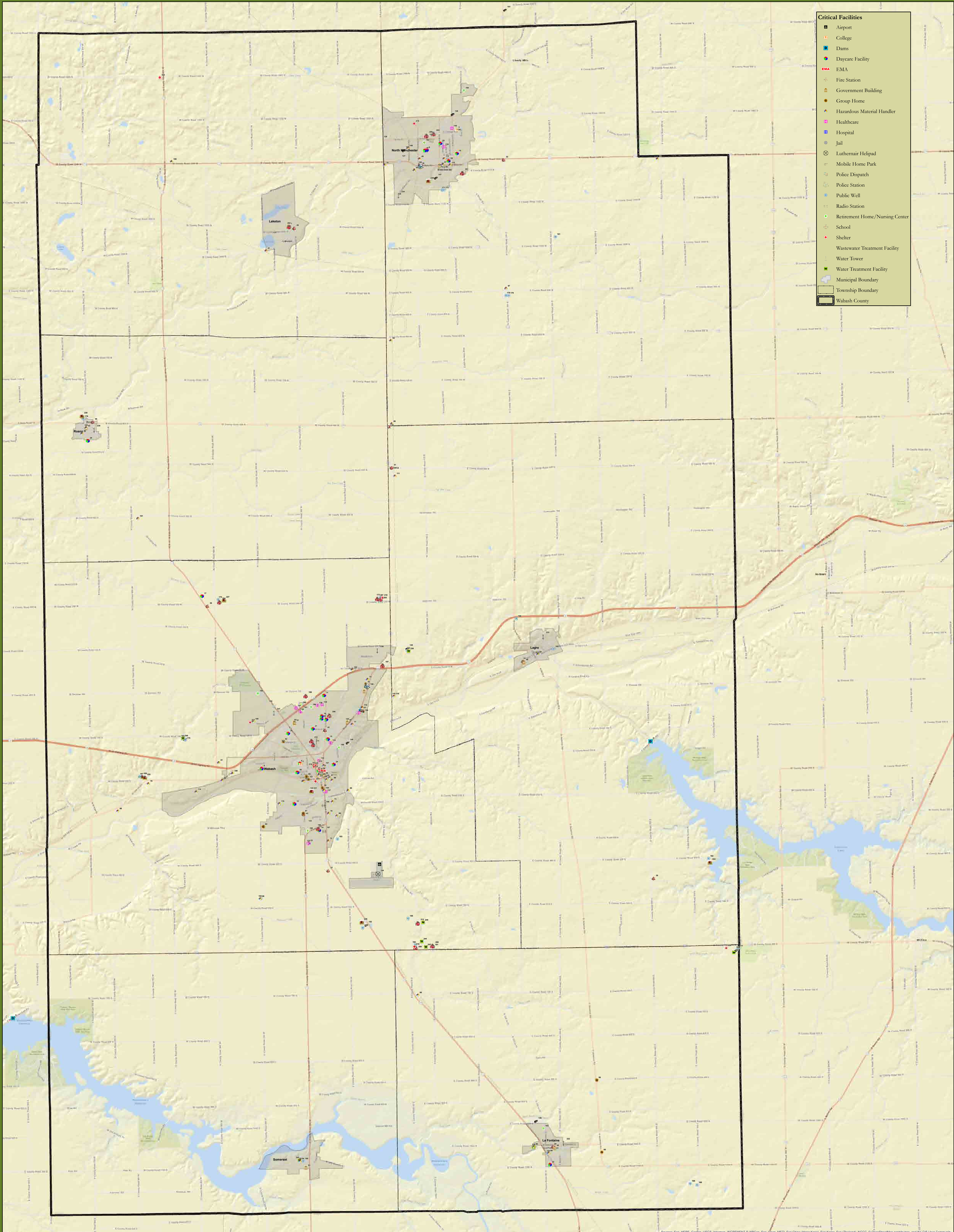
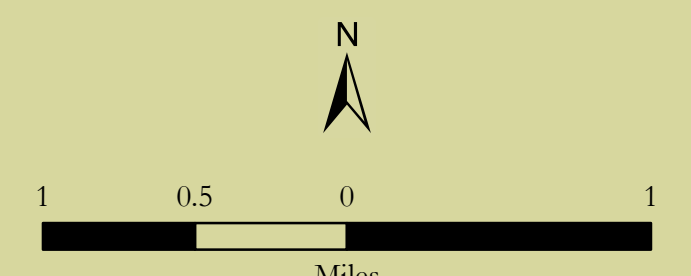


- Critical Facilities**
- Airport
 - College
 - Dams
 - Daycare Facility
 - EMA
 - Fire Station
 - Government Building
 - Group Home
 - Hazardous Material Handler
 - Healthcare
 - Hospital
 - Jail
 - Luthernair Helipad
 - Mobile Home Park
 - Police Dispatch
 - Police Station
 - Public Well
 - Radio Station
 - Retirement Home/Nursing Center
 - School
 - Shelter
 - Wastewater Treatment Facility
 - Water Tower
 - Water Treatment Facility
 - Municipal Boundary
 - Township Boundary
 - Wabash County



Sources of Data:
 1. Wabash County Officials/GIS, 2018
 2. Critical Facilities List, Public Comment (CIBH), 2018
 3. US Bureau of the Census TIGER files, 2017



DRAFT

	Christopher B. Burke Engineering, LLC PNC Center, Suite 1308 South 115 West Washington Street Indianapolis, Indiana 46204 (317) 266-8000 (317) 632-3366	PROJECT: City of Wabash MHMP Update	PROJECT NO: 17-0510 APPROX. SCALE: 1:40,000 DATE: 02/20/19
	TITLE: Critical Facilities		EXHIBIT: A