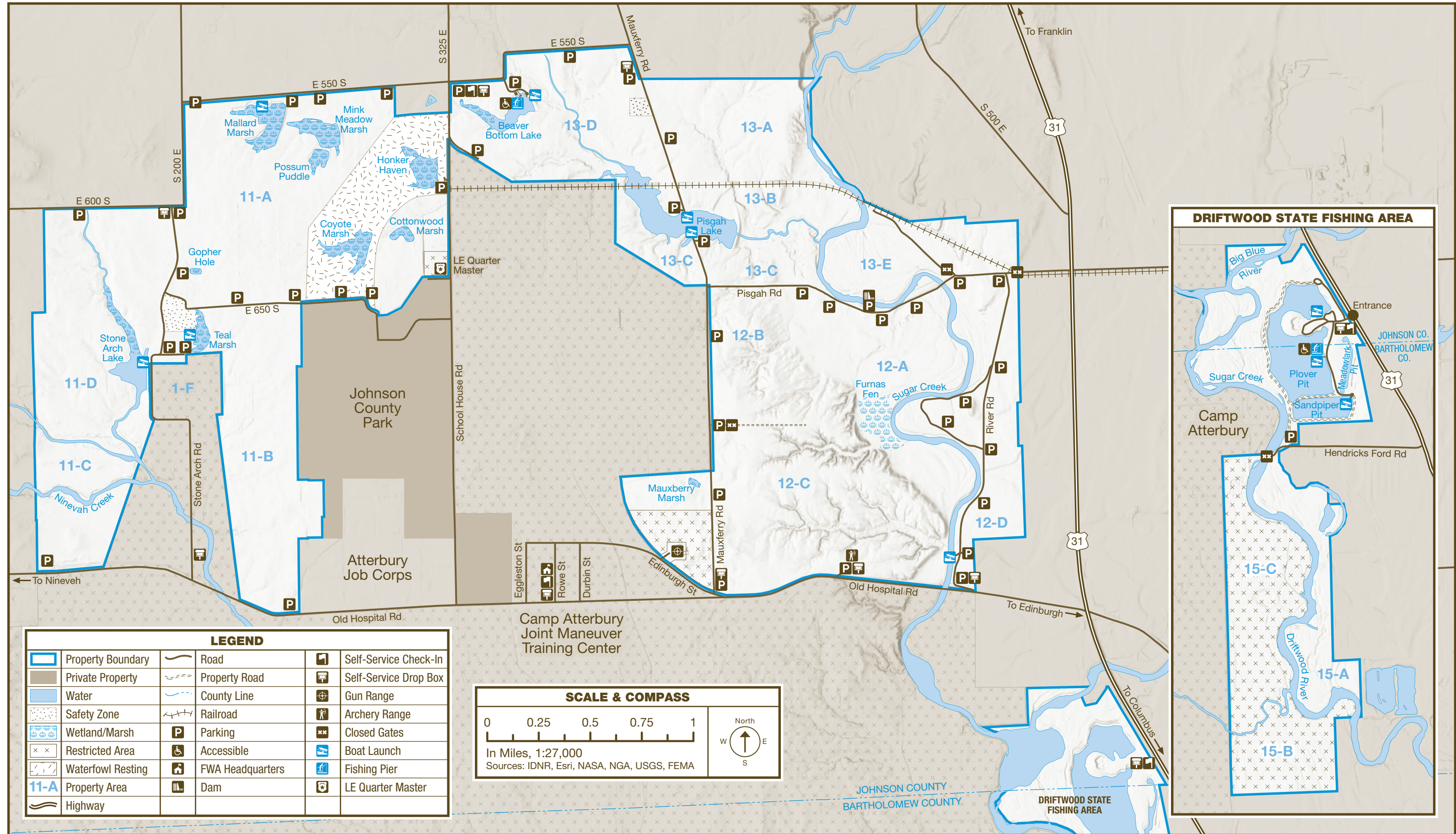
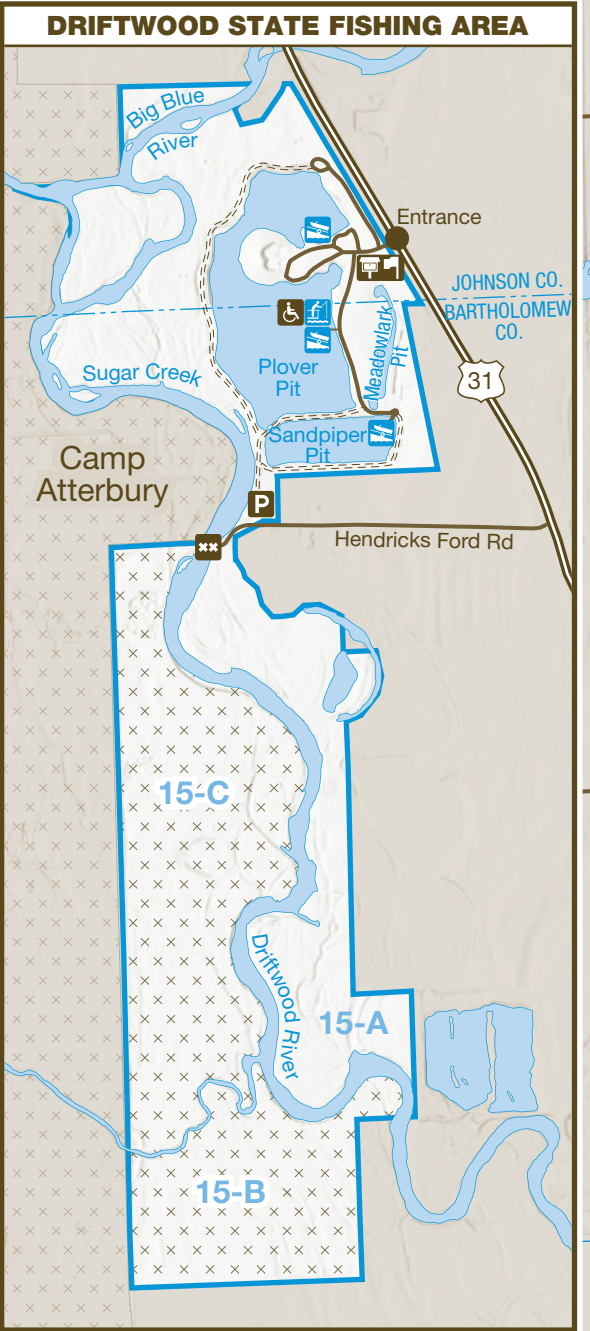
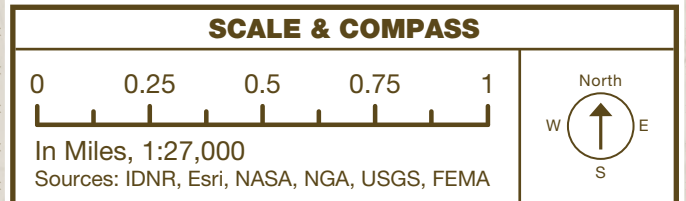


ATTERBURY FISH & WILDLIFE AREA

7970 South Rowe Street | Edinburgh, IN 46124 | 812-526-2051
 4,950 Acres | Established 1969



LEGEND			
	Property Boundary		Road
	Private Property		Property Road
	Water		County Line
	Safety Zone		Railroad
	Wetland/Marsh		Parking
	Restricted Area		Accessible
	Waterfowl Resting		FWA Headquarters
	Property Area		Dam
	Highway		Self-Service Check-In
			Self-Service Drop Box
			Gun Range
			Archery Range
			Closed Gates
			Boat Launch
			Fishing Pier
			LE Quarter Master





OUR STORY

Atterbury State Fish & Wildlife Area is dedicated to providing quality hunting and fishing opportunities while maintaining 4,950 acres of upland game habitat, marsh, running creeks and shallow impoundments.

Atterbury Fish & Wildlife Area, a portion of the former Camp Atterbury, was acquired by purchase in March 1969 from the Government Services Administration and through the Federal Lands to Parks Program. Wildlife management efforts began immediately on the initial 5,400 acre tract. The remaining military area became a training facility for National Guard and Army Reserve units. In 2010, DNR deeded 1,250 acres to the National Guard to meet its military mission needs and acquired in exchange more than 1,900 acres to create Deer Creek FWA in Putnam County.

Nearby Driftwood State Fishing Area is a 260-acre neighboring property ideal for bass, bluegill, catfish, crappie and tiger muskellunge. Plover Pit has two concrete boat ramps, and Meadowlark and Sandpiper Pits have gravel access ramps. Check-in is required.

Camp Atterbury Joint Maneuver Training Center authorizes limited hunting on the military installation.



HELPFUL LINKS

Stay up to date on hunting and fishing information.

HUNTING

WHERE: on.IN.gov/where2hunt
LEARN: on.IN.gov/learn2hunt
GUIDE: on.IN.gov/huntingguide

FISHING

WHERE: on.IN.gov/where2fish
LEARN: on.IN.gov/learn2fish
GUIDE: on.IN.gov/fishingguide

LICENSES

PURCHASE: on.IN.gov/inhuntfish

RECREATION

LOCATIONS: on.IN.gov/recfinder



ACTIVITIES & FACILITIES

- Look for these icons on the map.
- ACCESSIBLE:** Accessible hunting and fishing areas available. Ask for details at headquarters.
- ARCHERY:** Longbows, recurve bows, compound bows and crossbows permitted. Stationary targets provided. Open sunrise to sunset.
- BOATING:** 270 acres of available water: 13 impoundments, including 75-acre Pisgah Lake. DNR lake permit not required.
- BOAT RAMP:** Stone Arch Lake, Beaver Bottom, Pisgah Lakes and Sugar Creek have concrete boat ramps. Teal Marsh and Mallard Marsh have gravel boat ramps. All lakes are limited to a maximum 24-volt electric motor.
- DOG TRAINING:** Provided in sections 13-A, 13-B and 13-D. (See map.)
- FISHING:** Channel catfish, bluegill, redear and largemouth bass are common. A state fishing license is required. There is a 14-inch minimum size limit on large-mouth bass. All other size and bag limits apply. Ten impoundments are closed during waterfowl season.
- FISHING PIER:** ADA-accessible, available at Plover Pit and Beaver Bottom Marsh.
- GATHERING:** Gathering berries, mushrooms and nuts is allowed.
- HUNTING:** Deer, rabbit, squirrel, dove, woodcock, ducks and geese are common. Check-in required. All hunting seasons and bag limits apply. Special hunts include a three-day Military Deer Hunt and Put-Take Pheasant Hunt. Visit website for details.
- GUN RANGE:** 66-position rifle/pistol range and four combination trap and skeet fields. A fee is charged. Eye and ear protection required. May close during severe weather. Contact the range for details, (812) 526-6552.
- TRAPPING:** Wetland trapping is available through a drawing held the first Saturday in October.
- WILDLIFE WATCHING:** Excellent songbird and upland game viewing year-round.



RULES & REGULATIONS

In addition to state fish and wildlife laws, this property is governed by posted regulations affecting the public use of lands and facilities owned, leased or licensed by the DNR.

POSTED AREAS: Safety zones and other restricted areas are marked with appropriate signs. PLEASE READ AND OBEY ALL SIGNS.

VIOLATIONS: Violation of any law, rule or regulation governing this property may cause forfeiture of hunting, fishing or visiting privileges.

RESPONSIBILITY: The DNR Division of Fish & Wildlife will not be held responsible for any accidents or deaths occurring from use of these facilities.

TRAFFIC: Traffic on public roads through the area is governed by state and county laws. Service roads and trails are restricted to walking except by authorized vehicles. No motorized vehicles, horses or bicycles are permitted beyond county roads. Park only in designated areas.

COLLECTION PERMIT: Collection permits are required from the property manager or DNR to collect anything except berries, mushrooms and nuts.

CHECK-IN STATION

- You must self check-in for the following activities:
 - Hunting
 - Dog training
 - Night hunting (by permit only)
- Kindly self check-in for the following activities:
 - Boating
 - Gathering
 - Hiking
 - Fishing
 - Wildlife watching

ONE-DAY ACCESS PERMIT

- Permission to hunt or trap must be obtained before entering the field. Daily hunt permit cards must be in possession of the hunter and recorded through established procedures outlined at the check-in station. Self-service drop boxes are available. Night and predator hunting follows the same self-service procedure. Areas 15-B and 15-C are closed unless the adjoining military areas are open to the public. Visit website for details.
- Written permission from the FWA headquarters is required to enter the waterfowl resting area.

NOT PERMITTED: Camping, fires, and swimming prohibited. Animals may not be released for dog training purposes.



DNR PROPERTIES NEARBY

For a full list/map of all DNR properties visit on.IN.gov/recguide or on.IN.gov/recfinder.

MOUNTAIN TEA STATE FOREST

Hiking, Wildlife Watching, Fishing, Hunting

BROWN COUNTY STATE PARK

Mountain Biking, Bridle Trails, Hiking, Wildlife Watching, Interpretive Services, Playgrounds, Historic Features, Fishing, Swimming, Restaurant, Inn, Camping, Cabins, Shelterhouses



Please carry out all trash you produce to help keep the property clean and beautiful for all to enjoy!



Your purchase of hunting and fishing equipment and motorboat fuels supports Wildlife & Sport Fish Restoration and boating access facilities.



FOR MORE INFORMATION

WRITE: Indiana DNR Division of Fish & Wildlife
 402 W. Washington Street, W273
 Indianapolis, IN 46204

CALL: 317-232-4200
ONLINE: on.IN.gov/DNR



FOLLOW US



OUTDOOR INDIANA Subscribe to Outdoor Indiana magazine today, Visit OutdoorIndiana.org or call 317-233-3046.

The programs, services, facilities, and activities of the Indiana Department of Natural Resources are available to everyone. DNR prohibits discrimination on the basis of race, color, national origin, age, sex, or disability. If you believe that you have been discriminated against in any program, activity, or facility as described above, or if you desire further information please write to: Department of Natural Resources, Executive Office, 402 W. Washington Street, W256, Indianapolis, IN 46204, (317) 232-4020.

INDIANA FISH & WILDLIFE AREAS

1. Atterbury	13. Kankakee
2. Blue Grass	14. Kingsbury
3. Chinook	15. LaSalle
4. Crosley	16. Pigeon River
5. Deer Creek	17. Splinter Ridge
6. Fairbanks Landing	18. Sugar Ridge
7. Glendale	19. Tri-County
8. Goose Pond	20. Wabashiki
9. Hillenbrand	21. Wilbur Wright
10. Hovey Lake	22. Willow Slough
11. Jasper-Pulaski	23. Winamac
12. J.E. Roush Lake	

FUNDING FOR FISH & WILDLIFE

The DNR Division of Fish & Wildlife sells hunting, fishing, and trapping licenses. All revenue is used for managing fish and wildlife resources in Indiana. No license money goes into the state general fund.

The Division also receives money from the federal Sport Fish and Wildlife Restoration programs (sometimes referred to as Dingell-Johnson and Pittman-Robertson funds). The funds are derived from excise taxes levied on sporting arms and ammunition, bows and arrows, fishing equipment and motor boat fuel. The funds are then returned to state fish and wildlife agencies using a formula that in part is based on the number of fishing and hunting license buyers.

DNR
 Indiana Department of Natural Resources

ATTERBURY
 FISH & WILDLIFE AREA

Atterbury FWA
 7970 South Rowe St.
 Edinburgh, IN 46124

(812) 526-2051
on.IN.gov/AtterburyFWA
atterburyfwa@dnr.IN.gov

on.IN.gov/wildlife

© 08/2024 Indiana Department of Natural Resources