

KANKAKEE FISH & WILDLIFE AREA

4320 W. Toto Rd. | North Judson, IN 46366 | 574-896-3522
 4,474 Acres | Established 1923

SCALE & COMPASS

0 0.25 0.5 0.75 1

In Miles, 1:35,000
 Sources: IDNR, Esri, NASA, NGA, USGS, FEMA

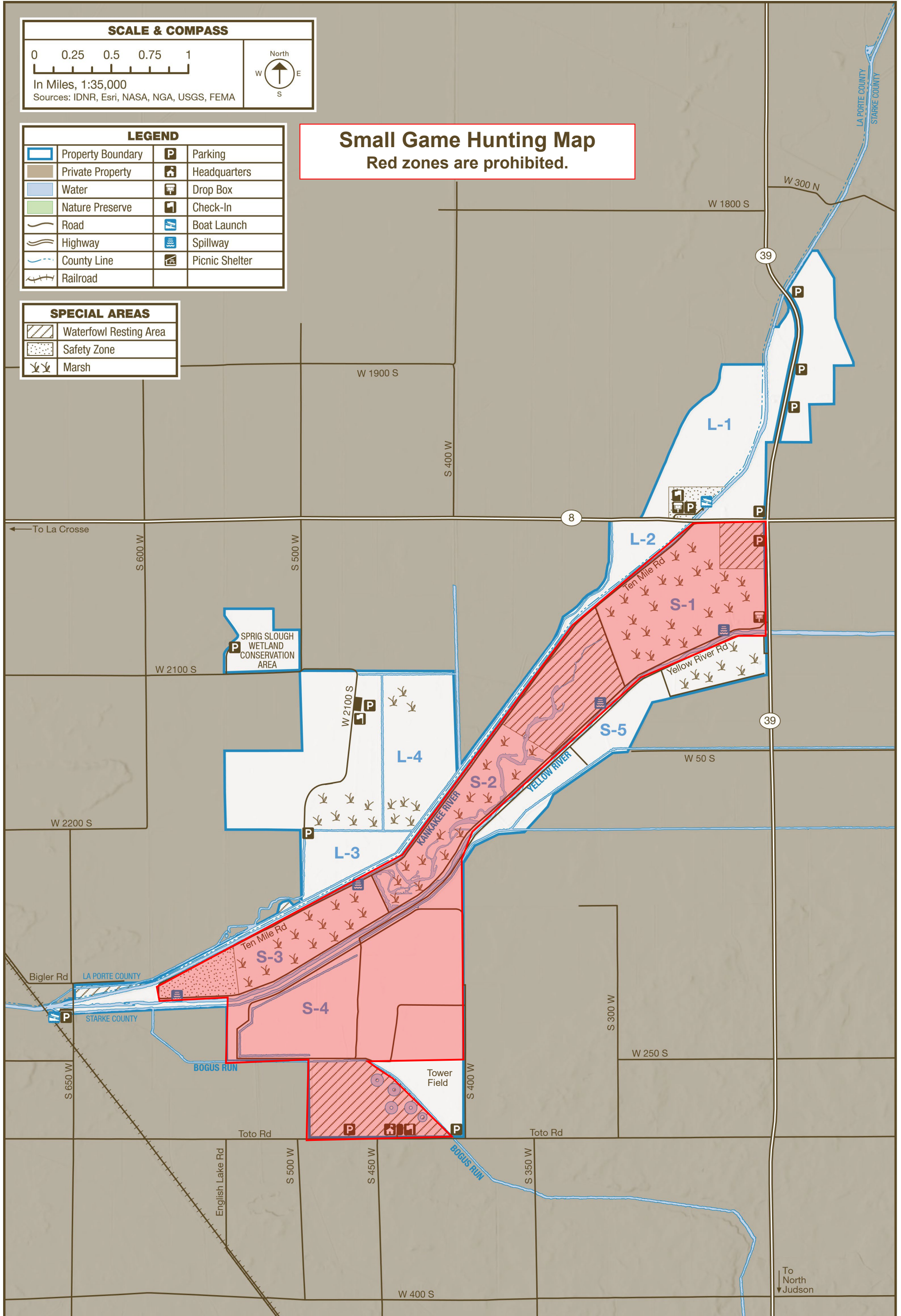
LEGEND

	Property Boundary		Parking
	Private Property		Headquarters
	Water		Drop Box
	Nature Preserve		Check-In
	Road		Boat Launch
	Highway		Spillway
	County Line		Picnic Shelter
	Railroad		

Small Game Hunting Map
 Red zones are prohibited.

SPECIAL AREAS

	Waterfowl Resting Area
	Safety Zone
	Marsh



Kankakee FWA

Small Game Hunting

Locations:

- Open for hunting: L-1, L-2, L-3, L-4, S-5, and Tower Field (east of the office).
- The red areas are **not** open for deer or turkey hunting, these areas are closed all season for waterfowl hunting.

Small Game Hunting Rules:

- Quail, rabbit, dove, woodcock, pheasant, squirrel, and crow are present.
- Dove drawings are held at 11 a.m. CT at Kankakee FWA headquarters from opening dove season until necessary. All other small game hunting is self-service.
- Please fill out a hunting permit and turn it in at the drop boxes. All hunting season dates and bag limits apply.
- Possession of lead shot on Kankakee FWA or its satellite properties is illegal except while hunting for wild turkey. All other hunting requires nontoxic shot.
- Ten-Mile Road is closed to all hunting but waterfowl hunting. No small game hunting is allowed at this location (red on map).

Questions? Call the Kankakee FWA Office at: (574) 896-3522

Hours: 9 a.m.- 2 p.m. CT