

---

## 2024 Waterfowl Draw Information LaSalle Fish & Wildlife Area

This page includes information and instructions for those interested in or selected to participate in a 2024 Indiana Waterfowl Hunt Draw. It is important to note that areas participating in reserved hunts are managed by various agencies and may have unique restrictions that each hunter must follow. Please read each area's information packet carefully before pursuing a hunt.

### Applying:

The application period for the 2024 Waterfowl Hunt Draw is Aug. 19, 2024 – Sept. 15, 2024. Late applications will not be accepted. You must obtain a valid Indiana hunting license, and an Indiana waterfowl privilege stamp prior to applying. Visit our page on [waterfowl & migratory game birds](#) to learn more about waterfowl hunting requirements. Each hunter is eligible to select five dates from any participating property when applying. Dates can be seen when applying. There are no age restrictions on applying. Youth hunters may apply if they are properly licensed to hunt waterfowl.

A HIP number and Federal Duck Stamp is also required to hunt waterfowl. Hunters must register at [indianaoutdoor.IN.gov](http://indianaoutdoor.IN.gov) or by calling 866-671-4499. There is no cost to register for a HIP number.

### Restrictions:

#### Allowed Equipment:

- Nontoxic shot is required for all waterfowl hunting nationwide.
- The shotgun used must not be capable of holding more than three shells, unless it is plugged with a one-piece filler that cannot be removed without disassembling the gun.
- It is illegal to use a shotgun larger than 10-gauge.
- All waterfowl hunters are limited to a maximum of 25 shells per hunter.

#### Bag Limit:

- The daily bag limit for teal is six.
- The daily bag limit for coots is 15.
- The daily bag limit for mergansers is five, which may include no more than two hooded mergansers.
- The daily bag limit for ducks is six, which may include no more than four mallards (two of which may be hens), three wood ducks, two canvasbacks, one pintail, two redheads, two black ducks, one mottled duck, and one or two scaup. The daily bag limit may include one scaup thru Nov. 3 in the North Waterfowl Zone. The daily bag limit in the North Waterfowl Zone may include two scaup starting Nov. 4 through the end of duck season.
- The possession limit is three times the daily bag limit.

**Hunting Hours:**

- Hunting Hours are one-half hour prior to sunrise to noon. Northside bayous (excluding units east of U.S. 41) are open all legal hours (one-half hour prior to sunrise until sunset).

**Hunt Information:**

To claim your reservation, you must check in at the property office before 4:30 a.m. CT (5:30 a.m. ET) on your selected hunt date. Hunting parties should be no more than three individuals and all members must be present when checking in.

If you do not claim your reservation by the times indicated above, your spot will be given to another hunter or forfeited entirely.

The property has over 15 waterfowl hunting units available on rotation, and each may hold one to three hunting parties.

On reserved hunting dates, 5 hunters are selected and allowed their choice of preferred hunting unit in the order indicated by their draw number. The hunter in reserved position #1 will choose first and reserve position #5 will be the last to pick before the remaining units are open for public drawing.

You may hunt anywhere inside the boundaries of your chosen hunting unit. No boats, hides, or layouts are provided. There are a few blinds remaining in the Baker Unit, but hunters are not required to hunt from them. We encourage hunters to coordinate and cooperate with other sportsmen when multiple hunting parties are sharing a unit.

You must carry with you and return the one-day access permit received upon drawing a unit. Each permit has an area to indicate your harvest records and additional information. Please fill your permits to the best of your ability. Permits can be returned at the property office or at any orange drop box located at each parking area.

**Area Information:**

LaSalle Fish & Wildlife Area (FWA), located 2.5 miles west of Lake Village, Indiana, provides quality outdoor recreational opportunities for both hunters and wildlife viewers. The 4,511-acre property is dominated by wetlands that lie along the Kankakee River and attract thousands of migratory birds throughout the year. Each year, hunters successfully harvest several species including deer, turkey, rabbits, and waterfowl.

Waterfowl units at LaSalle FWA are a mix of moist soil wetland, lure crops, and forested wetlands all of which range in water levels. We recommend scouting areas ahead of time and planning out access prior to the hunt. Many areas are accessible through walk-in or boat access. Only electric motors are allowed in Blackberry marsh. The rest of the property including all river bayous, Baker Units, and Black Oak Lowlands (idle speed only) outboards are allowed. If you have questions about accessing an area, call or visit the main office.

**Contact:**

If you have further questions, please contact the LaSalle property office at 219-992-3019.

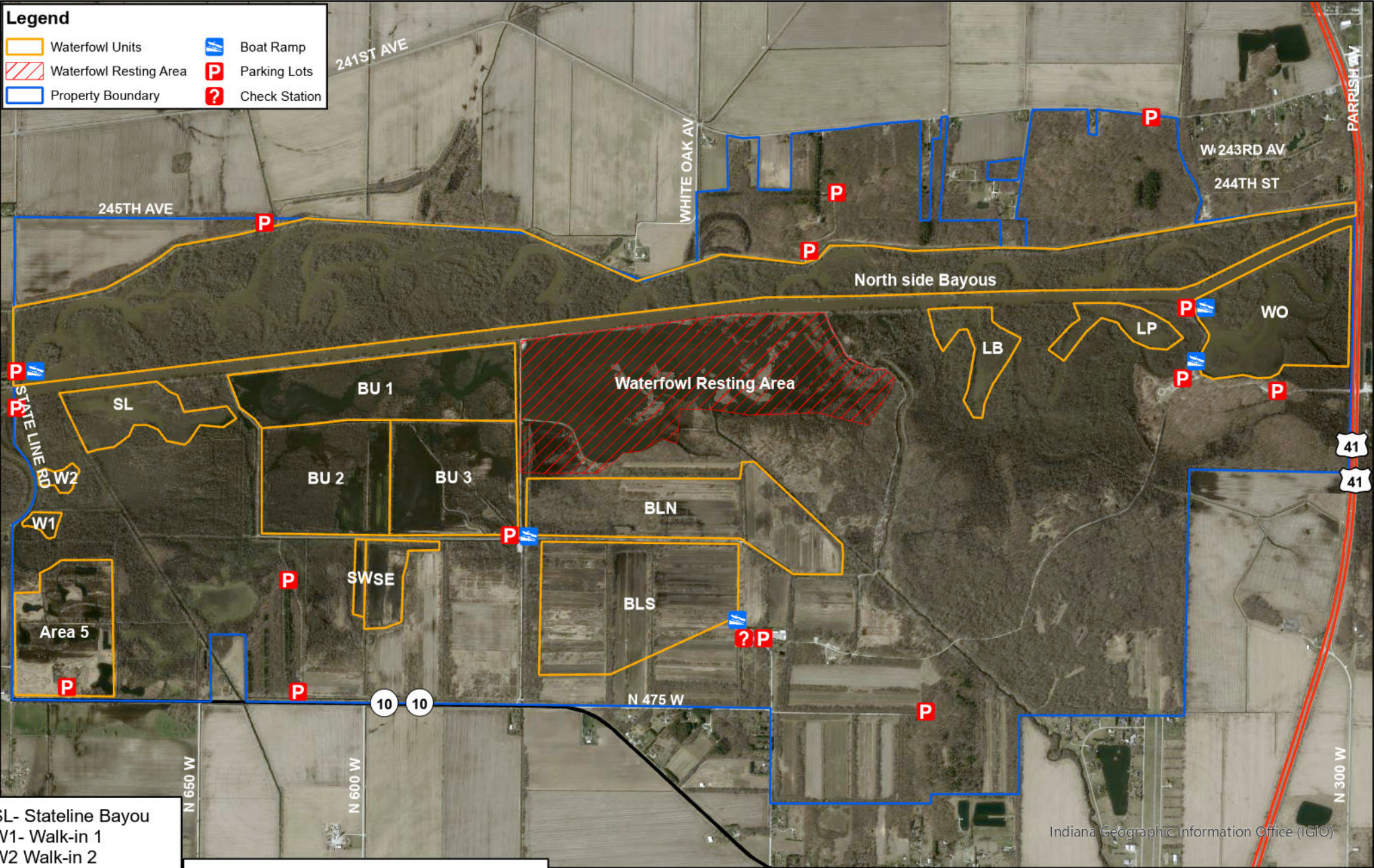
**Address:** 4752 W 1050 N, Lake Village, IN 46349

# LaSalle Waterfowl Map



**Legend**

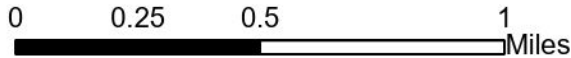
 Waterfowl Units	 Boat Ramp
 Waterfowl Resting Area	 Parking Lots
 Property Boundary	 Check Station



Indiana Geographic Information Office (IGIO)

SL- Stateline Bayou  
W1- Walk-in 1  
W2 Walk-in 2  
SW- Stake West  
SE- Stake East  
LB- Lost Bayou  
LP- Lily Pad Bayou  
WO- White Oak Bayou





Baker Unit 1 (BU1)- 3 Parties  
Baker Unit 2 (BU2)- 3 Parties  
Baker Unit 3 (BU3)- 3 Parties  
Black Oak Lowlands North (BLN)- 2 Parties  
Black Oak Lowlands South (BLS)- 3 Parties

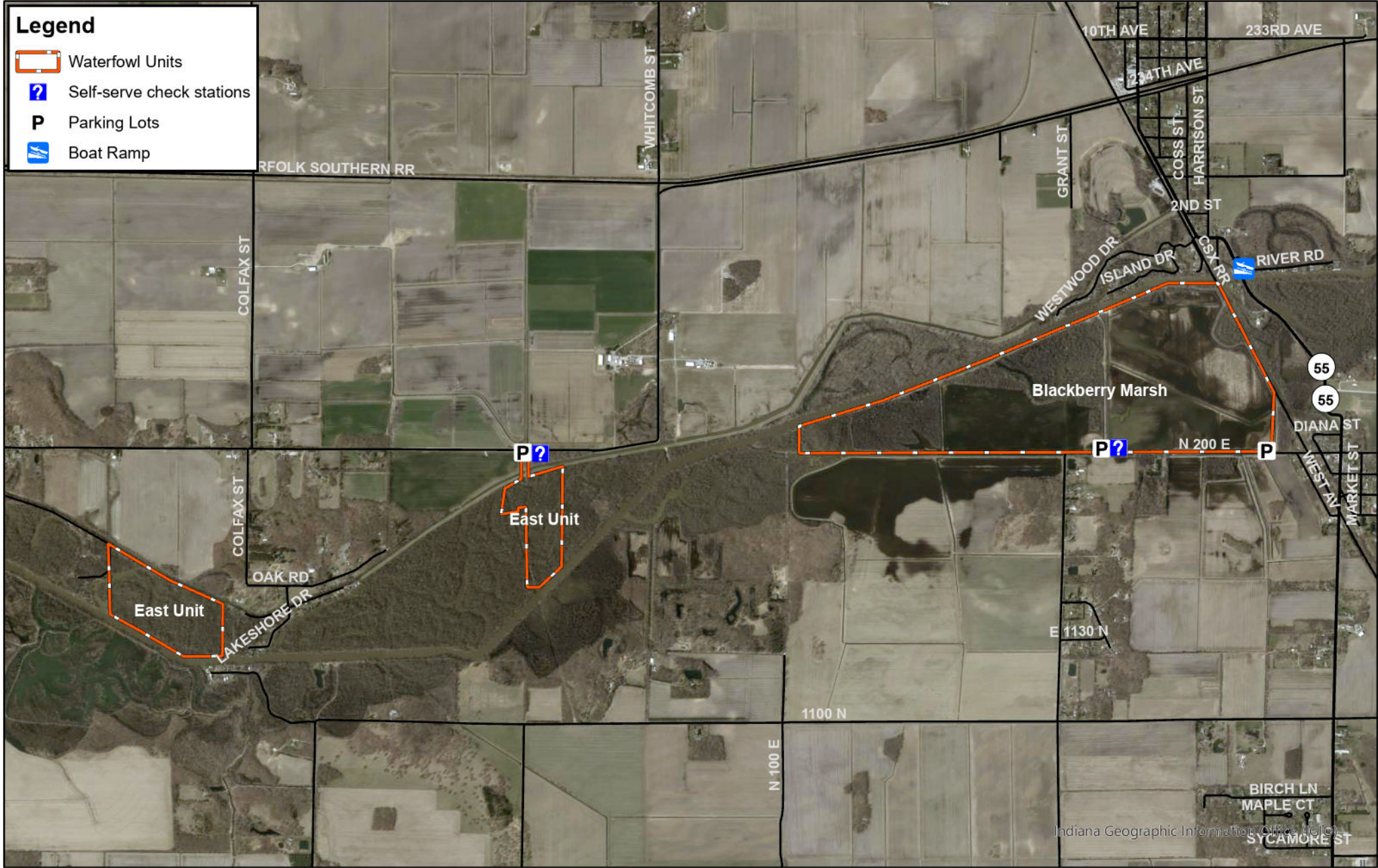


# LaSalle East Unit Waterfowl Map

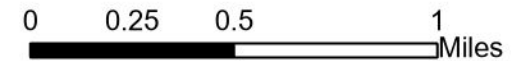


## Legend

-  Waterfowl Units
-  Self-serve check stations
-  Parking Lots
-  Boat Ramp



East Unit- (2 Parties)  
 Blackberry Marsh- (2 Parties)  
 Hunting in both areas is allocated through the main draw at LaSalle FWA Headquarters



**\*All boundaries are approximate**