

Spring Wild Turkey Draw Information Big Oaks National Wildlife Refuge

This page includes information and instructions for those interested in or selected to participate in an Indiana Wild Turkey Hunt Draw. It is important to note that areas participating in reserved hunts are managed by various agencies and may have unique restrictions that each hunter must follow. Please read each area's information packet carefully before pursuing a hunt.

Restrictions: Non-toxic shot is required at Big Oaks NWR for all turkey hunting.

Allowed Equipment:

- A .410 caliber and 10-, 12-, 16-, 20-, or 28-gauge shotgun loaded with pellets of size No. 4, 5, 6, 7, or 7½, or with Tungsten Super Shot 8, 9 and 10. Shot sizes smaller than size 7½ must be made of Tungsten Super Shot or equivalent pellet density only, such as Tungsten Super Shot 8, 9 and 10.
- A muzzleloading shotgun not smaller than 20-gauge and not larger than 10-gauge, loaded with pellets of size 4, 5, 6, 7, 7½, and Tungsten Super Shot 8, 9 and 10. Combination loads using shot sizes other than these are illegal.
- A bow and arrow or crossbow.

Bag Limit:

- The bag limit is one bearded or male turkey for the spring season.

Hunting Hours:

- Big Oaks NWR has the spring turkey season hunting hours of one-half hour before sunrise and checkout of the refuge by 2 p.m. (refuge will be on Eastern Time).

Call-in Reservations:

If you have been drawn for the April 23-25 turkey hunt, then you can reserve a hunt area by calling the refuge office at 812-273-0783 on April 9 starting at 8 a.m. If you have been drawn for the April 26-28 turkey hunt, then you can reserve a hunt area by calling the refuge office on April 10 starting at 8 a.m. Only phone-in reservations will be accepted. Please check the refuge website at [http:// www.fws.gov/refuge/big-oaks/](http://www.fws.gov/refuge/big-oaks/) for additional details about turkey hunting at Big Oaks NWR.

Hunt Information:

The buddy system is required. Do not show up by yourself. The refuge can accommodate 210 hunters (105 drawn hunters plus their 105 hunting partners). Hunt history for units can be found attached to this document. A map delineating hunt areas is available at the end of this document. The 50,000-acre refuge is overlaid on the closed Jefferson Proving Ground; the area offers a variety of turkey habitats to hunt. Because of the history of the site, safety briefings are required.

There are three avenues to hunt at Big Oaks National Wildlife Refuge:

- The first is to enter state-drawn hunts (available through the Indiana Division of Fish & Wildlife's website). These dates are April 23-25 and April 26-28.
- The second method is local lottery refuge hunts held on May 3-4 and May 10-11. Area reservations and drawings for these hunts are held at 4:30 p.m. the Friday before the hunt at the refuge office.
- The third option is attending a no-show drawing on every hunt day, which is held at 6:30 a.m. to fill available slots. The refuge can accommodate 210 turkey hunters per day and the refuge typically has open slots for turkey hunters.

Hunters can check in at the refuge between 5:30-6:30 a.m. on the morning of their hunt. Hunters must check out at no later than 2 p.m. that day. All hunters are required to hunt with a partner and view the refuge safety briefing once per calendar year. Hunters 17 and under need to be supervised by partners 18 or older.

Fees: A \$20 Refuge Hunt Permit (\$10 for holders of the America the Beautiful Interagency Senior Pass or Access Pass) is required for hunting; the refuge office accepts cash only. Fees are waived for those 15 or younger. The Refuge Hunt Permit can also be used for deer and squirrel hunting.

Safety briefings: It is important to view the safety video before the day of your hunt. The safety video will be shown at the refuge office on public use days (April 18 and 21, before the turkey hunt begins) and hunt days. Safety briefings will also be shown on April 20 (day of youth turkey hunt). Safety briefings will be held at 7 a.m., 8 a.m., 11 a.m., and 3 p.m., on public use days. Safety briefings will be held at 5:30 a.m., 6 a.m., 11 a.m., and 1 p.m. on hunt days (including youth hunt day). The office is open from 7 a.m. – 4:30 p.m. on public use days and from 5:30 a.m. – 2 p.m. on turkey hunt days. Refuge Hunt Permits will be sold after each briefing (cash only). It is strongly encouraged that you attend one of these early safety briefings, as it will prevent long delays on the initial day of your hunt, allowing you to arrive at your hunting area up to 1-3 hours earlier than would otherwise be possible.

Hunters must check in on each hunt day by 6:30 a.m. or else they will lose their reserved slot. If you fail to show up for your first hunt day, your reserved slot for the other days could be given away unless you have made prior arrangements with Big Oaks NWR staff to hunt the other days.

Directions:

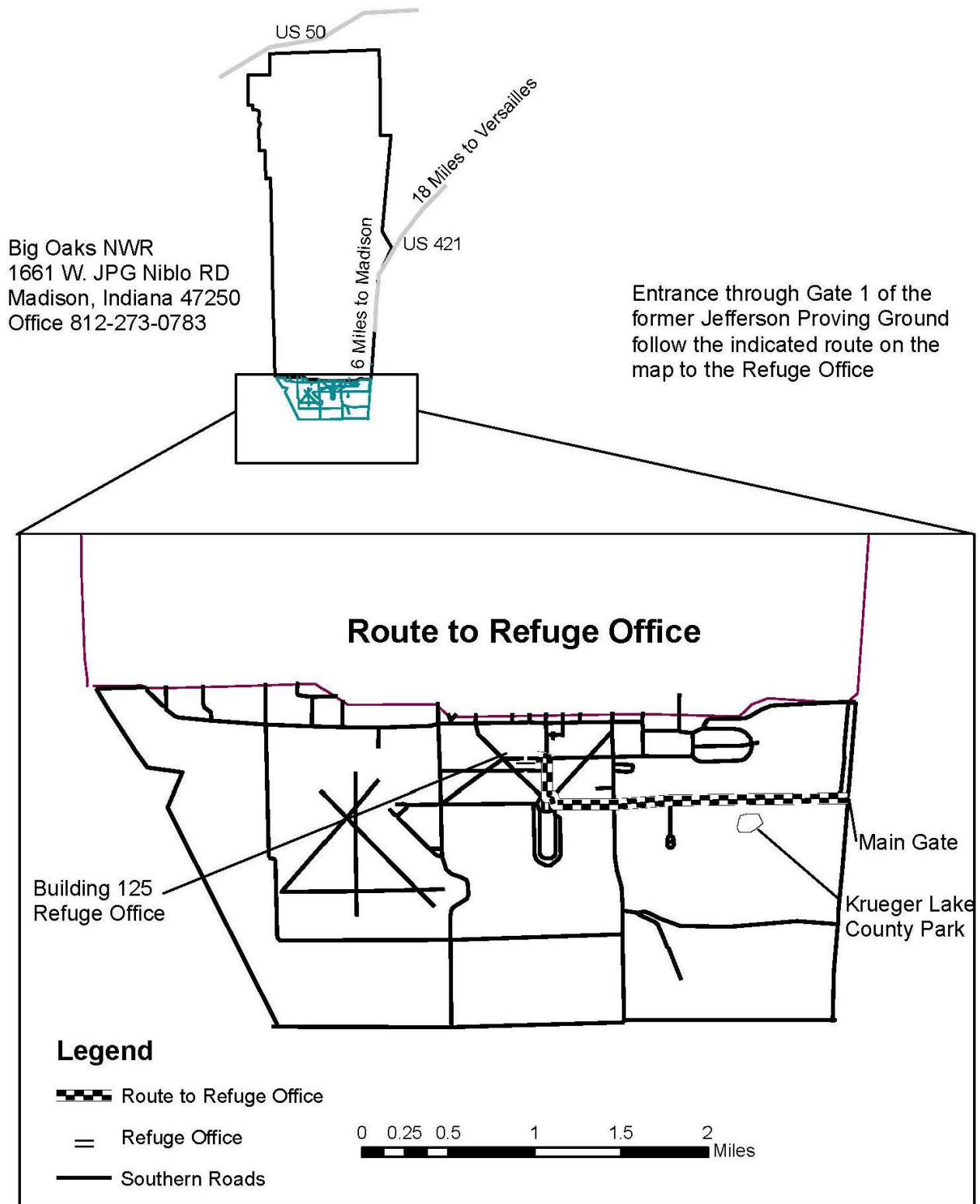
The entrance to Big Oaks NWR is located on U.S. Highway 421, approximately 5 miles north of Madison, Indiana. The refuge office is north of Madison, Indiana, in Building 125 in the southern portion of the former Jefferson Proving Ground (JPG) (the cantonment area). Be aware that smartphones and GPS units will direct travelers to closed gates—please use the following directions:

From Madison, drive north on Highway 421 to the Main Entrance of the former JPG, enter through this entrance and follow the brown refuge directional signs. Go west on Ordnance Drive, then turn right onto the circle and then turn right on Meridian Road. Take a left on Niblo Road and the refuge office is located in Building 125.

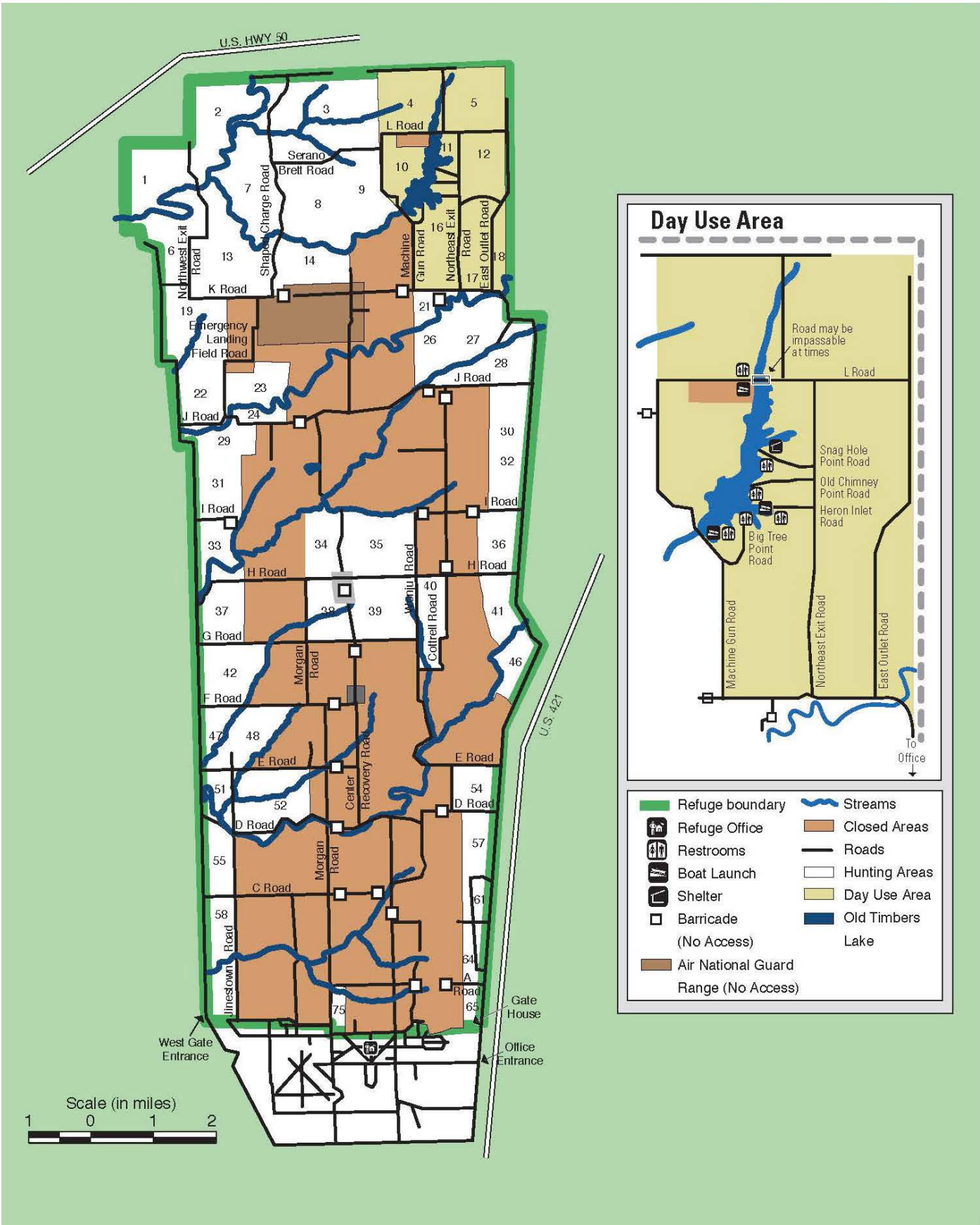
Contact:

If you have further questions, contact the Big Oaks NWR office at 812-273-0783.

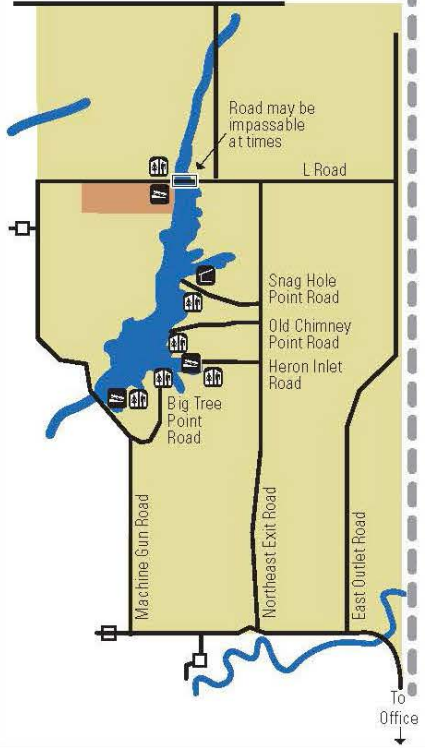
Big Oaks National Wildlife Refuge



Check in at Building 125
Call 812-273-0783 for assistance



Day Use Area



- | | | | |
|--|--------------------------------------|--|------------------|
| | Refuge boundary | | Streams |
| | Refuge Office | | Closed Areas |
| | Restrooms | | Roads |
| | Boat Launch | | Hunting Areas |
| | Shelter | | Day Use Area |
| | Barricade | | Old Timbers Lake |
| | Air National Guard Range (No Access) | | |

Scale (in miles)



Turkey Harvest 2001 - 2024

Area	# of Turkey																							
	2001	2002	2003	2004	2005	2006	2007	2008	2009	2010	2011	2012	2013	2014	2015	2016	2017	2018	2019	2020	2021	2022	2023	2024
1	1	0	0	1	1	1	0	0	0	0	0	0	0	0	0	0	0	0	2	na	0	0	0	0
2	8	3	1	3	2	4	1	1	1	2	2	2	4	0	2	0	1	1	2	na	1	1	3	0
3	2	6	1	4	2	2	1	3	1	1	0	1	2	0	0	0	1	1	3	na	0	1	0	3
4	3	0	1	1	0	2	0	0	2	0	1	2	0	1	0	0	0	0	0	na	0	0	0	0
5	1	2	3	0	0	1	0	0	0	0	0	1	0	0	0	0	0	0	0	na	0	1	0	0
6	3	2	2	3	2	5	1	1	2	3	1	1	2	2	1	0	2	1	2	na	1	1	1	0
7	0	5	2	2	1	0	0	0	2	0	0	1	0	0	0	0	0	0	0	na	0	0	2	0
8	0	0	0	0	0	0	0	0	0	0	0	0	0	1	0	0	0	0	0	na	0	1	0	0
9	1	0	0	1	1	0	1	0	0	0	1	0	2	1	1	0	0	0	0	na	1	0	2	1
10	1	0	0	0	0	1	0	1	0	0	0	2	0	0	0	1	0	0	0	na	0	2	0	0
11	2	1	1	0	1	1	0	0	0	0	0	0	0	0	0	0	0	0	0	na	1	0	2	0
12	1	0	0	1	0	0	0	1	1	1	2	0	0	0	0	0	0	0	0	na	0	0	1	0
13	2	2	2	2	0	2	1	0	2	2	1	2	1	0	0	0	1	1	4	na	1	0	0	0
14	0	0	0	1	1	1	0	0	0	0	0	0	0	1	0	1	0	1	0	na	0	0	0	0
16	0	2	0	0	1	1	0	1	1	0	0	1	1	0	2	1	0	0	0	na	0	0	0	2
17	2	1	2	0	0	0	0	1	0	0	0	0	0	2	0	0	1	1	0	na	1	2	3	0
18	2	0	0	0	0	0	0	0	3	0	1	0	0	0	0	1	0	0	0	na	0	4	0	0
19	0	0	3	1	0	3	0	2	1	1	1	0	2	1	1	0	0	0	2	na	2	0	2	2
21	3	1	3	0	1	1	1	3	2	1	1	1	2	2	2	1	3	3	6	na	3	4	3	2
22	0	2	1	3	2	0	0	0	2	0	0	0	0	0	0	0	3	1	1	na	0	0	0	0
23	1	0	2	0	1	1	2	1	2	1	0	1	3	0	1	1	0	2	0	na	0	1	0	0
24	1	1	2	1	0	1	1	1	0	0	3	2	0	1	1	1	0	2	0	na	2	1	0	3
26	3	0	0	0	0	4	0	2	2	1	2	4	0	3	1	1	2	2	2	na	4	0	4	0
27	4	3	2	0	2	1	0	1	1	0	1	0	1	0	0	0	0	0	1	na	0	0	0	0
28	4	5	0	1	0	4	0	0	2	1	0	2	0	0	2	0	1	1	3	na	2	1	1	0
29	1	1	2	0	1	2	1	1	1	0	0	2	1	2	1	1	0	1	1	na	2	1	1	2
30	1	1	0	1	1	1	0	0	0	0	0	0	0	0	2	0	0	1	0	na	0	1	0	1
31	0	2	2	3	0	0	1	2	1	2	0	1	1	0	0	0	0	0	0	na	0	0	1	1
32	2	3	2	1	0	4	0	1	1	0	1	0	0	0	0	0	0	1	0	na	0	0	1	1
33	2	1	1	0	0	1	0	0	1	2	0	0	0	0	2	0	2	1	1	na	2	1	3	3
34	1	4	1	1	0	2	0	0	2	1	0	1	0	0	0	0	0	0	1	na	2	0	2	0
35	0	3	1	3	0	2	0	4	0	2	3	2	2	0	1	0	2	0	1	na	2	1	1	0
36	4	3	1	1	0	2	0	0	0	3	0	0	0	1	0	0	2	0	0	na	1	0	0	0
37	2	3	2	1	1	2	1	3	0	3	2	1	0	0	1	1	1	1	0	na	1	0	0	0
38	3	1	1	2	2	2	0	0	1	0	0	0	0	1	1	0	1	2	0	na	2	0	1	0
39	4	0	2	3	1	1	0	0	0	2	2	0	0	0	0	0	0	0	0	na	1	0	1	1
40	1	3	0	0	1	1	0	0	2	2	0	1	0	0	0	0	1	1	1	na	1	1	1	3
41	4	2	2	1	1	0	2	2	0	1	0	0	0	1	1	0	0	0	0	na	0	3	0	0
42	1	1	0	1	0	0	0	0	0	0	1	1	0	1	0	0	0	0	0	na	1	1	0	0
46	3	0	2	1	0	1	0	2	1	2	0	0	0	0	0	2	0	3	0	na	1	0	1	0
47	2	1	1	1	1	0	0	0	0	0	0	1	0	0	0	2	1	0	0	na	0	0	0	0
48	0	4	1	2	0	1	2	0	1	1	1	1	1	1	1	1	2	0	0	na	4	1	0	0
51	1	3	0	0	0	1	0	1	1	0	1	1	0	0	0	1	0	1	0	na	1	0	0	0
52	4	1	7	0	1	2	5	1	2	3	0	1	0	2	2	1	1	1	0	na	2	0	0	1
54	1	1	0	2	2	4	2	3	1	0	1	1	3	4	0	1	0	0	0	na	0	0	0	0
55	1	2	0	1	2	1	1	0	0	0	0	2	0	0	1	1	1	0	0	na	0	0	1	1
57	1	2	2	2	0	0	0	1	0	0	0	1	0	0	0	0	0	0	0	na	0	0	0	0
58	4	5	4	0	4	1	3	1	1	2	1	2	2	3	3	2	0	1	1	na	0	0	1	0
61	1	3	0	1	1	2	0	0	0	3	0	0	2	2	0	3	0	0	1	na	1	0	0	1
64	2	0	1	2	0	0	0	2	0	2	1	0	0	0	0	0	0	0	0	na	0	0	0	0
65	2	2	1	0	1	2	1	1	0	0	0	0	1	0	0	0	0	0	0	na	0	0	0	0
75	2	2	4	4	4	4	3	1	2	0	6	2	1	4	2	2	1	0	1	na	3	1	2	1
Total	95	90	68	59	42	75	31	45	45	45	37	43	35	37	32	26	30	31	36	NA	46	31	42	29

*No Spring Turkey 2020 because of Covid 19 Restrictions