

## **Spring Wild Turkey Draw LaSalle Fish & Wildlife Area**

This page includes information and instructions for those interested in or selected to participate in an Indiana Wild Turkey Hunt Draw. It is important to note that areas participating in reserved hunts are managed by various agencies and may have unique restrictions that each hunter must follow. Please read each area's information packet carefully before pursuing a hunt.

### **Restrictions:**

#### **Allowed Equipment:**

- A 410 caliber and 10-, 12-, 16-, 20-, or 28-gauge shotgun loaded with pellets of size No. 4, 5, 6, 7, or 7½. Shot sizes smaller than size 7½ must be made of Tungsten Super Shot or equivalent pellet density only, such as Tungsten Super Shot 9 and 10.
- A muzzleloading shotgun not smaller than 20-gauge and not larger than 10-gauge, loaded with pellets of size 4, 5, 6, 7, 7½, and Tungsten Super Shot 9 and 10. Combination loads using shot sizes other than these are illegal.
- A bow and arrow or crossbow.

#### **Bag Limit:**

- The bag limit is one bearded or male turkey for the spring season.

#### **Hunting Hours:**

- All DNR properties managed by the Division of Fish & Wildlife have spring season hunting hours one-half hour before sunrise until noon for properties on CT and until 1 p.m. for properties on ET. All other property users are required to stay out of the field until after this time.

### **Hunt Information:**

If you are successful in drawing for a reserve hunt at LaSalle FWA, you must claim your reservation at the property headquarters before 4:30 a.m. CT (5:30 a.m. ET) on each day of your hunt. When checking in, hunters will receive a one-day hunting permit card which must be returned to a property drop box upon completion of hunt, regardless of whether a turkey was harvested. If you do not claim your reservation each day by the time indicated above, your spot will be given to another hunter or forfeited entirely.

If you are not successful in drawing a reserve hunt at LaSalle FWA, you may attend the daily standby drawing held in the check-station at 4:30 a.m. CT (5:30 a.m. ET) as any reservations left unfilled or forfeited will be drawn in-person and given to standby-draw participants.

You may NOT bring a hunting partner; however, you may bring a non-hunting observer or assistant. All non-hunting assistants who will be calling in turkeys must be properly licensed.

Hunters must stop hunting by noon CT (1 p.m. ET) and be out of the field by 1 p.m. CT (2 p.m. ET).

### **Youth Hunt:**

Youth, age 17 or younger, on the date of the hunt can participate but must be accompanied by an adult who is at least 18 years of age.

The youth hunter must possess a valid license to take a wild turkey.

Registration for youth season will be handled through the online reservation system to allocate opportunities for the 2025 season. Hunters will be able to select either April 19 or April 20 for the hunt days. There will also be a standby draw to fill open spots each day of the youth season at 4:30 a.m. CT.

The bag limit is one bearded or male wild turkey during spring, which includes both the youth and regular spring turkey seasons. The youth must comply with all other turkey hunting regulations.

The youth's adult partner must not possess a firearm, bow and arrow, nor crossbow while in the field, except for a lawfully carried handgun. All non-hunting partners who assist in calling turkeys must be properly licensed.

See the hunt information section above for drawing procedures for both successfully drawn reserve hunters and for the standby draw process.

Hunters must stop hunting by noon CT (1 p.m. ET) and be out of the field by 1 p.m. CT (2 p.m. ET).

### **Area Information:**

LaSalle Fish & Wildlife Area (FWA), located 3 miles west of Lake Village, Indiana, provides quality outdoor recreational opportunities for both hunters and wildlife viewers. The 4,511-acre property is dominated by wetlands that lie along the Kankakee River and also includes both upland and forest habitats. Each year, hunters successfully harvest several species including deer, turkey, waterfowl, and rabbits.

Spring turkey season at LaSalle FWA is by draw only for the entire season with standby draws held at 4:30 a.m. CT (5:30 a.m. ET) daily to fill any open spots for the day. When applying to the 2025 Wild Turkey Reserves at LaSalle FWA, you may choose from seven hunt periods:

- April 23 - April 25
- April 26 - April 27
- April 28 - April 30
- May 1-May 3
- May 4-May 6
- May 7 - May 9
- May 10 - May 11

The property will draw 8 hunters for each hunt period and hunters will be able to hunt anywhere on the main property (excluding the waterfowl resting area) or the east unit (properties east of US 41). If you are successful in drawing for a hunt at LaSalle FWA, you must sign in at the property office (located at 4752 W 1050 N, Lake Village, IN 46349) before 4:30 a.m. CT (5:30 a.m. ET) each day of your hunt period. If you do not claim your reservation by the times indicated above, your spot will be given to another hunter or forfeited entirely.

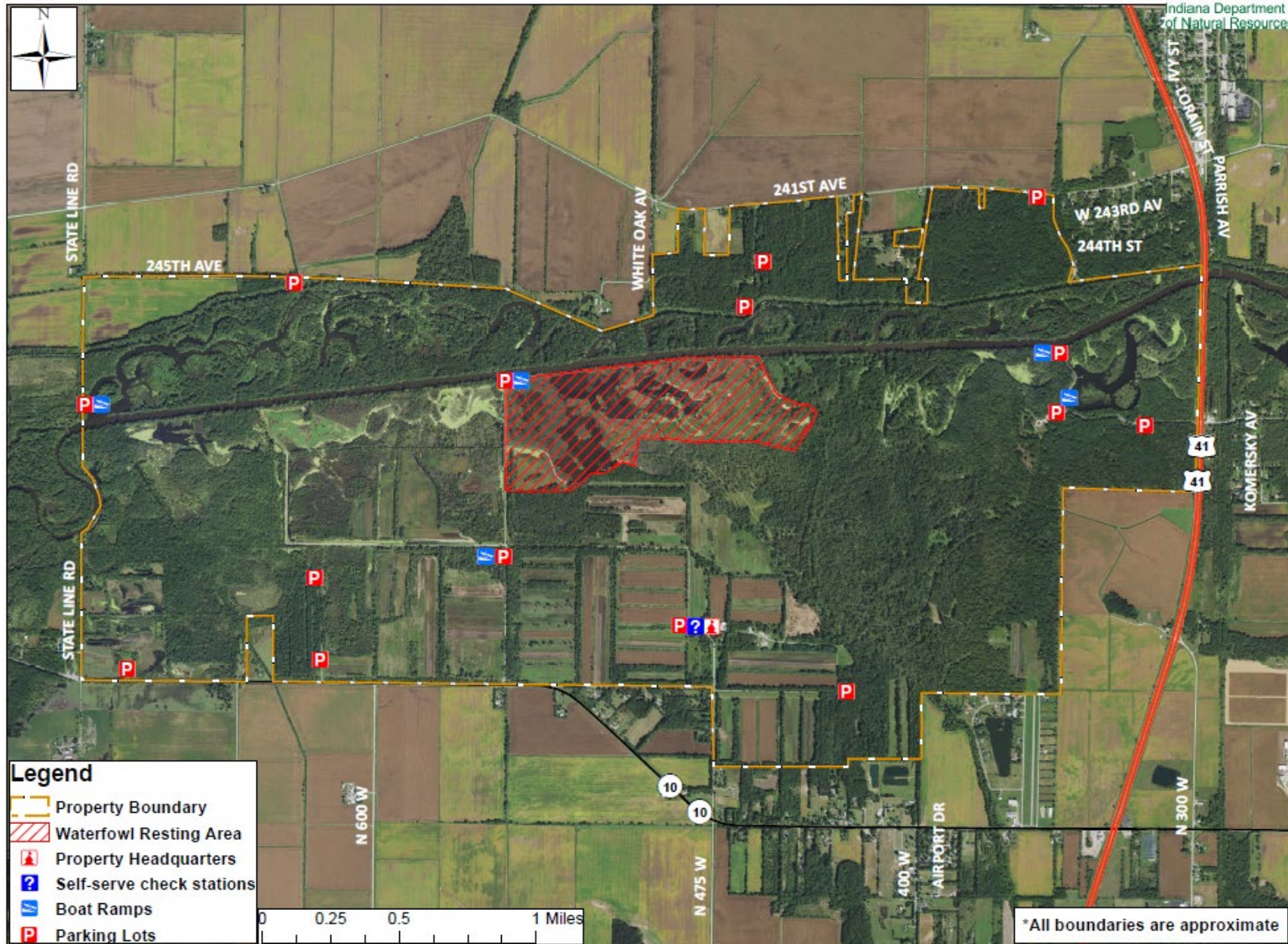
If you are not successfully drawn for a reserve hunt period at LaSalle FWA, you may still attend the daily standby drawings held at 4:30 a.m. CT (5:30 a.m. ET) from April 23, 2025 -May 11, 2025. This drawing will be to fill any open spots left after the reserve hunters choose. Hunters participating in the standby draw must sign up in the office prior to the 4:30 a.m. (5:30 a.m. ET) draw time. The office opens at 4 a.m. CT (5 a.m. ET) on the dates indicated above.

### **Contact:**

If you have further questions, please contact the LaSalle property office at 219-992-3019 or by email at [LaSalleFWA@dnr.IN.gov](mailto:LaSalleFWA@dnr.IN.gov).



# LaSalle Fish and Wildlife Area





# LaSalle Fish and Wildlife Area (East Unit)

