

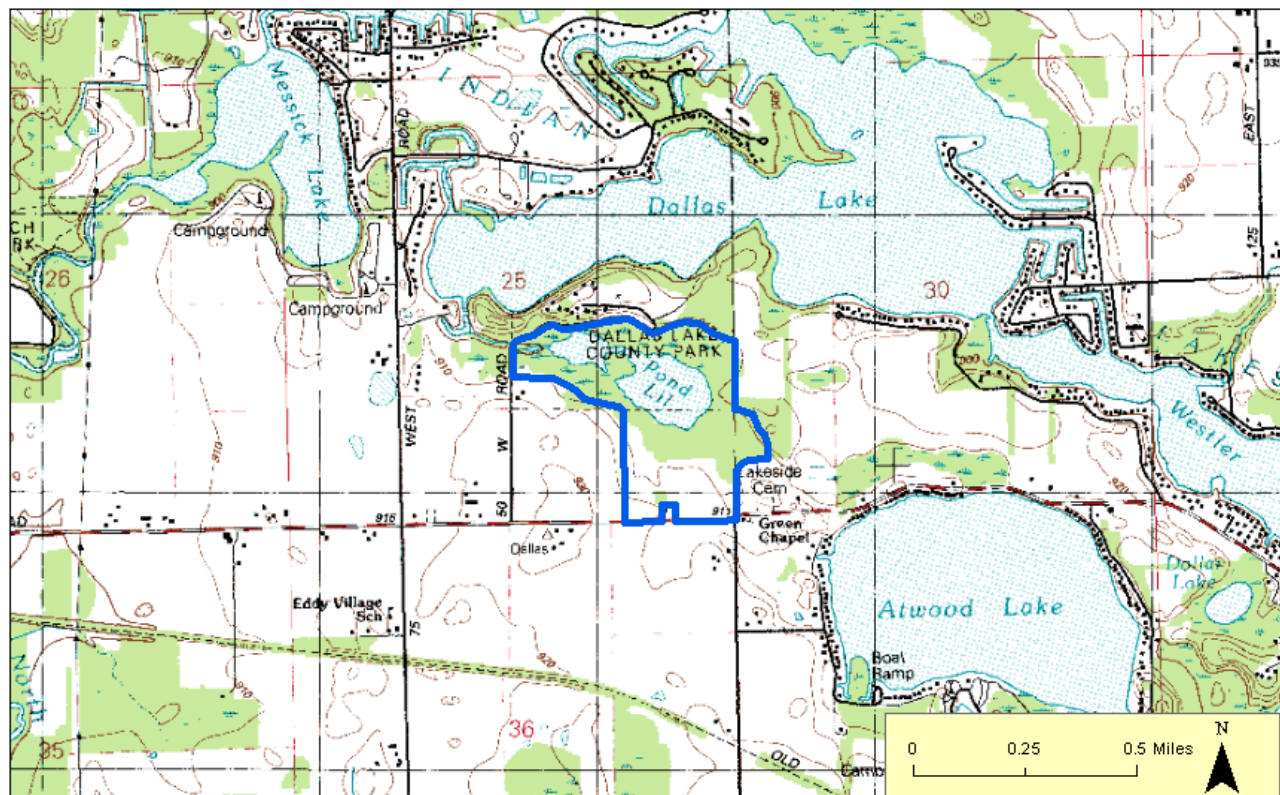
Pond 'Lil Nature Preserve

County: LaGrange Size: 94.67 acres
Ownership: LaGrange County Board of Parks and Recreation



Location and Access

Parking and trails. From Wolcottville: go North on SR 9 for 1 mile to 700S West onto 700 S and go approximately 3.5 miles North into Dallas Lake road. A 1.75 mile ADA accessible trail circles the pond and a trail runs along the northern portion of this preserve.



Description: This nature preserve is within Dallas Lake County Park and illustrates the early stages of bog development. The shoreline is ringed by a floating mat of sphagnum moss and plant roots. Many typical bog plants grow on the floating mat, including tamarack trees, orchids, and insectivorous pitcher plants and sundews. Over time, perhaps hundreds of years, the floating mat will likely expand toward the center of the pond. But, for our lifetimes, Pond 'Lil will remain more pond than bog.

Further Information:

LaGrange County Board of Parks and Recreation. Park Office hours Monday-Friday, 8:00-3:30 (260) 854-2225.

Division of Nature Preserves Northeast Regional Ecologist, Adam Balzer: abalzer@dnr.in.gov