

Springfield Fen Nature Preserve

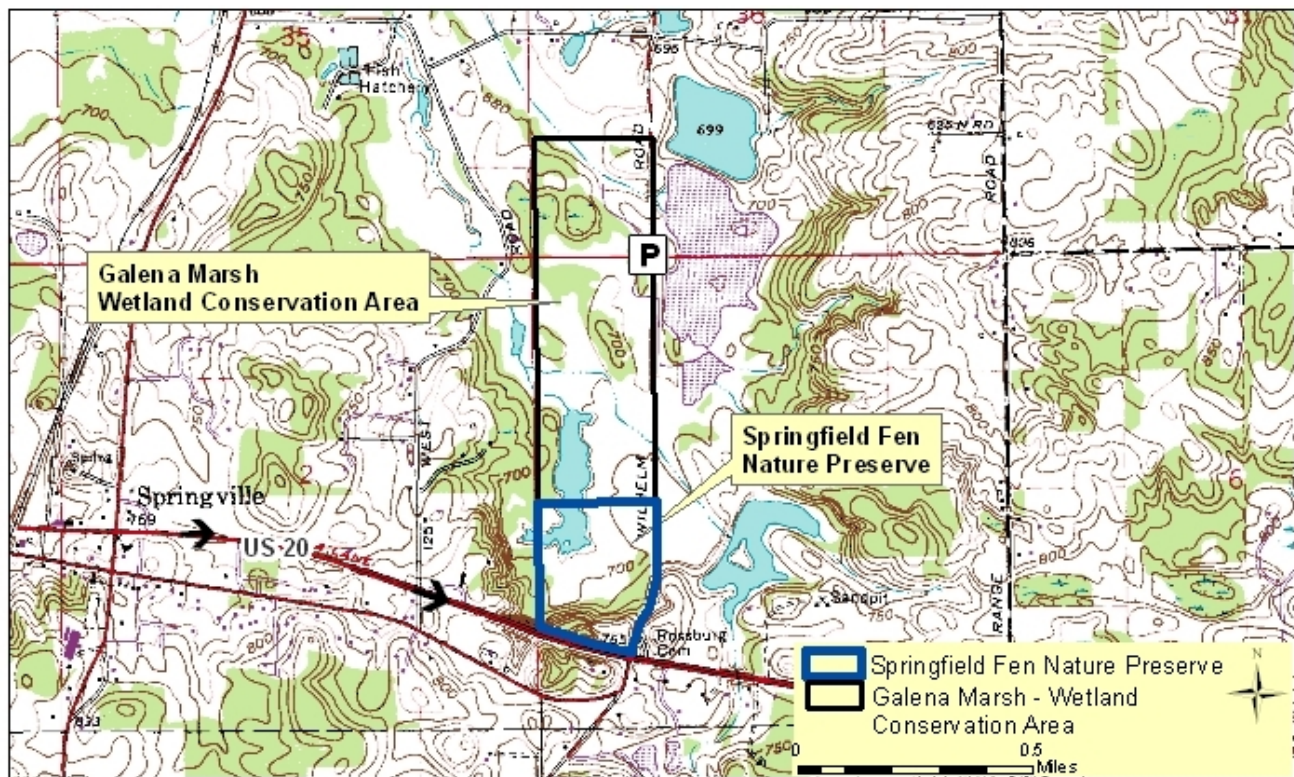
County: LaPorte Size: 45 acres
Ownership: Nature Preserves - IDNR; Fish and Wildlife - IDNR



Location and Access

Parking and trail. Hunting is allowed in season, so use caution when visiting.

From LaPorte take SR 39 north about 5 miles to the junction with US 20 at Springville. Travel east on US 20 for 1 mile to Wilhelm Rd. Turn left (north) and the preserve will be on the left side of the road for the next 0.45 mile. The state-owned wetland conservation area continues northward for about another mile. There is a parking lot along Wilhelm Rd.



Description: Springfield Fen Nature Preserve is part of a cooperative project between the Division of Nature Preserves and the Division of Fish and Wildlife, with part being the nature preserve and the remainder being a wetland conservation area called Galena Marsh. The nature preserve contains an excellent example of a prairie fen, which is a type of calcareous wetland dominated by prairie plants such as big bluestem, Indian grass, and numerous prairie forbs. Several species of plants considered rare, threatened or endangered in Indiana grow here. A high ridge overlooks the fen. At the base of the ridge are springs that flow year round.

Further Information:

Kingsbury Fish and Wildlife Area, 5344 S. Hupp Rd, LaPorte, IN 46350. (219) 393-3612.

www.in.gov/dnr/fishwild

Division of Nature Preserves Coastal Regional Ecologist, Derek Nimetz: dnimetz@dnr.in.gov