

Falls of the Ohio State Park Fossil Challenge



Falls of the Ohio State Park is known for its 390-million-year-old Devonian fossil beds that are among the largest exposed beds in the world. This challenge invites you to discover these unique features on your own. We encourage you to visit the state-of-the-art exhibits in the interpretive center to learn about them before you head out on your search, but that is not required.

All of our Indiana State Park challenges encourage exploration, and most have a big physical fitness component, too. The Falls of the Ohio Fossil Challenge also features a mental matching and discovery component. As you walk around the fossil beds (river level permitting) for fitness, finding these ancient treasures in the limestone requires examining the fossil beds up close. You don't have to search on your hands and knees, but you can if you want to! It's also great to involve children who are closer to the rocks!

How to do it

Your goal is to find all nine of the fossils pictured on the other side of this brochure. Take a photo of each one as you find it, and show your digital images to staff during regular interpretive center hours. If you find them all, you will receive a prize to take home with you!*

Rewards may be redeemed during regular Interpretive Center hours:
9 AM – 5 PM Monday – Saturday,
and 1 to 5 PM Sunday.

**Note that collecting fossils at the Falls of the Ohio State Park is not permitted. The fossil you will receive is not from the Falls of the Ohio but is a type that may also be found in the fossil beds here.*

If you find all nine, congratulations! You have a great eye! If you find eight of nine, you are still a winner!

Tips for the Fossil Challenge

Examine the photographs on the back of this page.

- Notice that everything has a different shape and pattern.
- Each kind of fossil in the challenge has a distinctive difference.
- The photos are not to scale. Some are enlarged to show detail. Others are smaller because they are large.
- Every fossil can be found on the upper fossil beds. The lower fossil beds have more corals and sponges, but they occur on the upper beds as well.

The challenge within the challenge

Two types of fossils are the most difficult to find.

- Trilobites are widespread on the upper beds are very hard to find on the lower beds. Some clams and brachiopods resemble trilobites, so study the photo for a general appearance. They come in a variety of sizes, from ½" to 3" across.
- Clams are only found in rocks on the upper fossil beds. Look around the ledge that is dark brown for ovals that sparkle.

Have fun exploring the fossil beds!

What if the fossil beds are covered by the Ohio River?

When the fossil beds are covered, you can still take the challenge. Ask at the interpretive center admissions desk where to find the 'high water' fossil challenge area!

Can you do the Falls of the Ohio State Park Fossil Challenge?

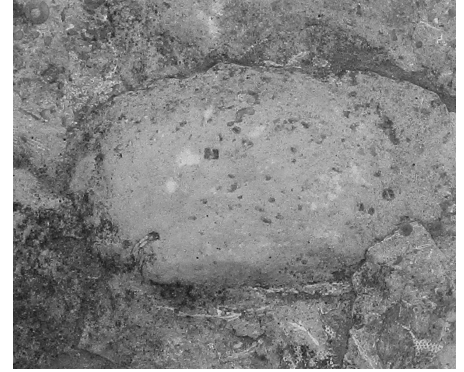
Find these type of fossils to meet the challenge.
Instructions are on the other side.



Snail



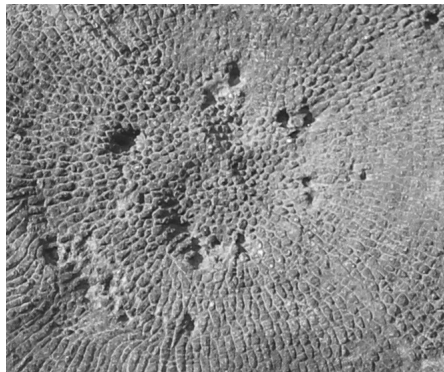
Trilobite "tail"



Bivalve (Clam)



Horn Coral



Honeycomb Coral



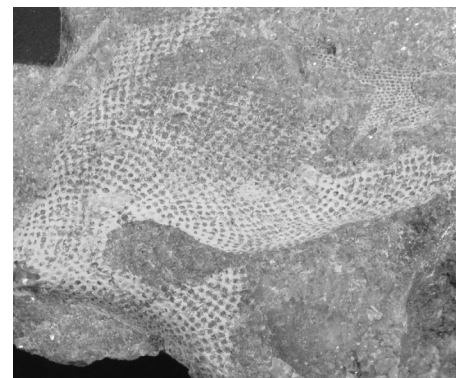
Sponge



Crinoids



Brachiopod



Lace Bryozoan