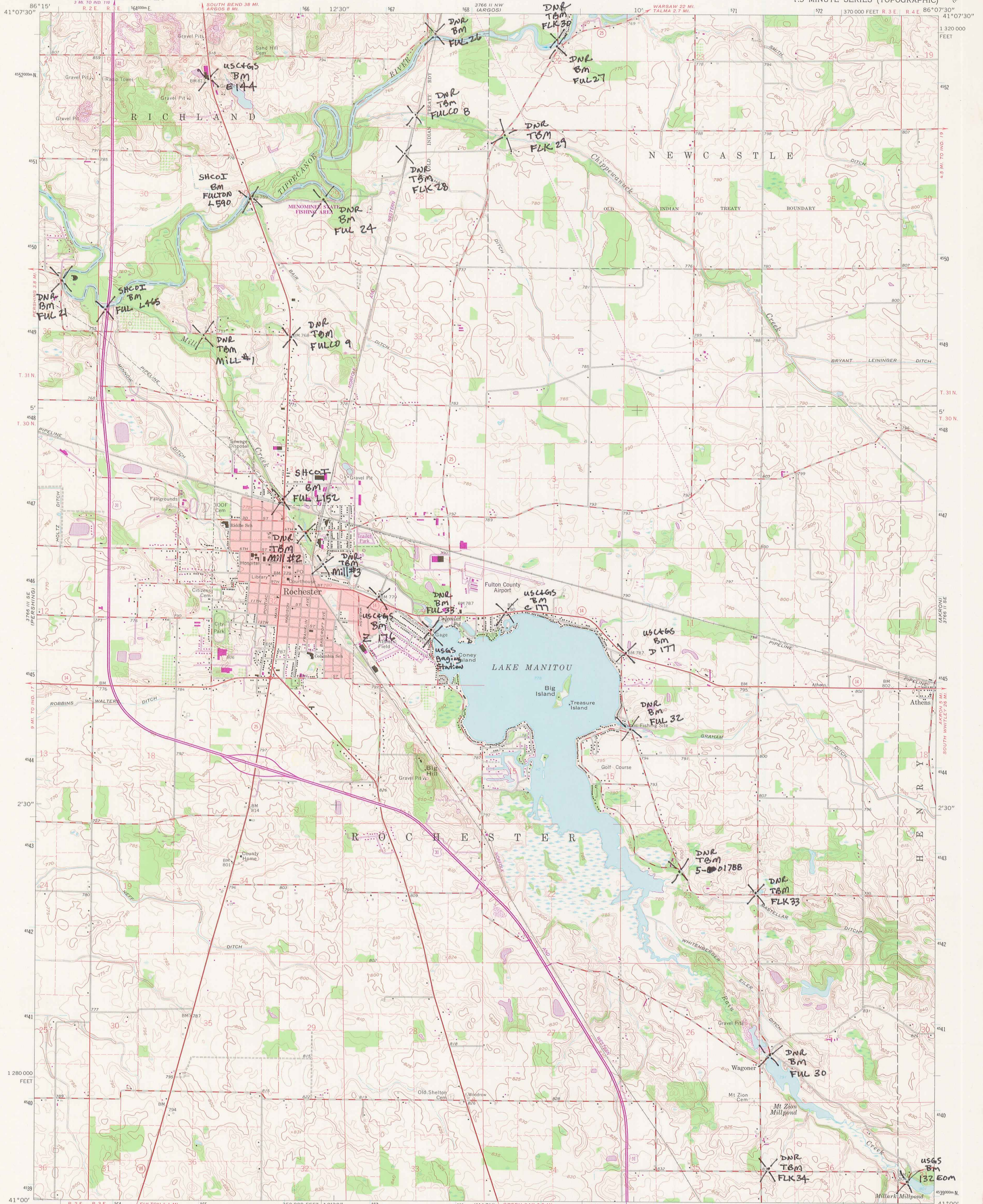


DUPLICATE COPY

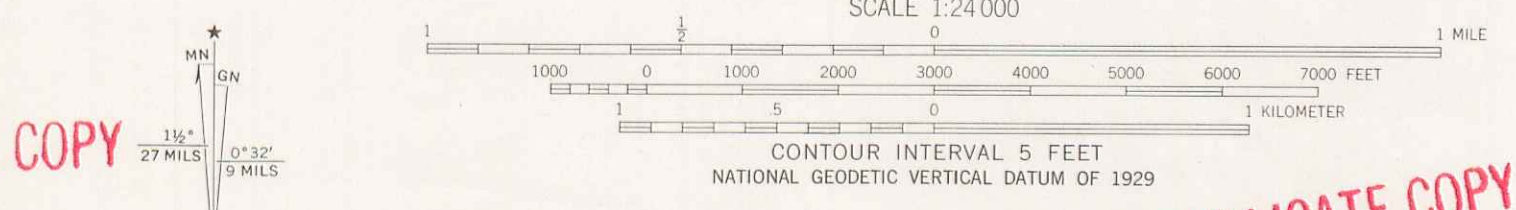
DUPLICATE COPY

ROCHESTER QUADRANGLE
INDIANA-FULTON CO.
7.5 MINUTE SERIES (TOPOGRAPHIC)

UNITED STATES
DEPARTMENT OF THE INTERIOR
GEOLOGICAL SURVEY



Mapped, edited, and published by the Geological Survey
Control by USGS and NOS/NOAA
Topography by photogrammetric methods from aerial photographs taken 1958. Field checked 1962
Polyconic projection. 10,000-foot grid based on Indiana coordinate system, east zone
1000-meter Universal Transverse Mercator grid ticks, zone 16, shown in blue. 1927 North American Datum
No adjustment is necessary to place the map on the predicted North American Datum 1983
Fine red dashed lines indicate selected fence and field lines where generally visible on aerial photographs. This information not checked
Red tint indicates area in which only landmark buildings are shown
There may be private inholdings within the boundaries of the National or State reservations shown on this map



ROAD CLASSIFICATION
Heavy-duty ——— Light-duty ———
Medium-duty ——— Unimproved dirt ———
U.S. Route ——— State Route ———
QUADRANGLE LOCATION
ROCHESTER, IND.
N4100-W8607.5/7.5
1962
PHOTOREVISED 1980
DMA 3768 II SW-SERIES V851

THIS MAP COMPLIES WITH NATIONAL MAP ACCURACY STANDARDS
FOR SALE BY U.S. GEOLOGICAL SURVEY, RESTON, VIRGINIA 22092
AND INDIANA DEPARTMENT OF NATURAL RESOURCES, INDIANAPOLIS, INDIANA 46204
A FOLDER DESCRIBING TOPOGRAPHIC MAPS AND SYMBOLS IS AVAILABLE ON REQUEST

DUPLICATE COPY

DUPLICATE COPY

DUPLICATE COPY