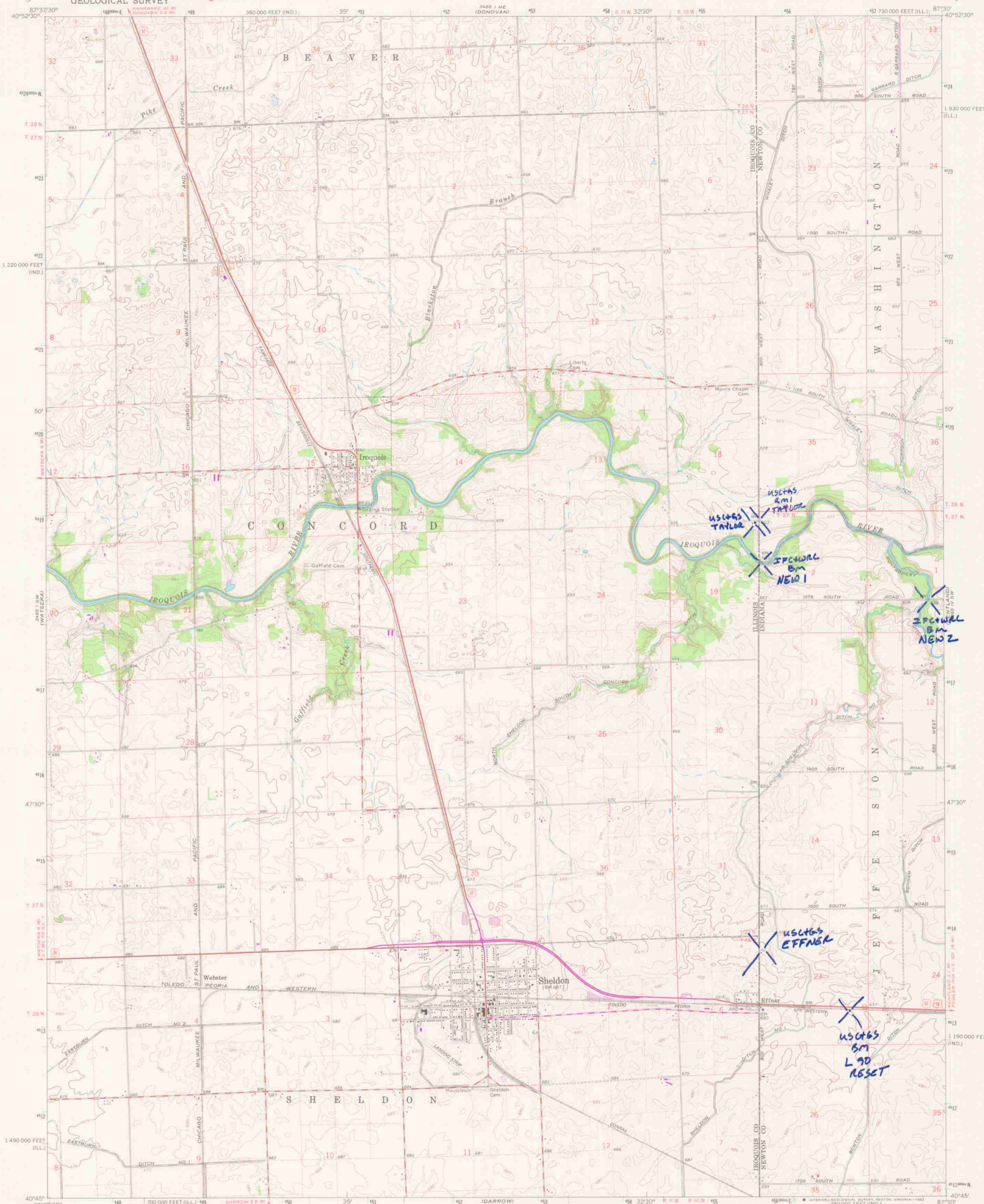


DUPLICATE COPY

DUPLICATE COPY

SHeldon QUADRANGLE  
ILLINOIS-INDIANA  
7.5 MINUTE SERIES (TOPOGRAPHIC)



Mapped, edited, and published by the Geological Survey  
Control by USGS, NOS/NOAA, and Indiana Flood Control  
and Water Resources Commission  
Topography by photogrammetric methods from aerial photographs  
taken 1959 and 1963 and planetable surveys 1961 and 1964  
Polyconic projection. 10,000-foot grids based on Illinois coordinate  
system, east zone, and Indiana coordinate system, west zone  
1000-meter Universal Transverse Mercator grid ticks,  
zone 16, shown in blue. 1927 North American Datum  
To place on the predicted North American Datum 1983  
move the projection lines 3 meters east  
as shown by dashed corner ticks  
Fine red dashed lines indicate selected fence and field lines where  
generally visible on aerial photographs. This information is unchecked

DUPLICATE COPY

UTM GRID AND 1980 MAGNETIC NORTH  
DECLINATION AT CENTER OF SHEET



CONTOUR INTERVAL 5 FEET  
NATIONAL GEODETIC VERTICAL DATUM OF 1929

THIS MAP COMPLIES WITH NATIONAL MAP ACCURACY STANDARDS  
FOR SALE BY U. S. GEOLOGICAL SURVEY, RESTON, VIRGINIA 22092  
AND INDIANA DEPARTMENT OF NATURAL RESOURCES, INDIANAPOLIS, INDIANA 46204  
A FOLDER DESCRIBING TOPOGRAPHIC MAPS AND SYMBOLS IS AVAILABLE ON REQUEST

Revisions shown in purple compiled in cooperation with State of  
Indiana agencies from aerial photographs taken 1976 and other  
source data. This information not field checked. Map edited 1980

ROAD CLASSIFICATION

Heavy-duty	Light-duty
Medium-duty	Unimproved dirt
Interstate Route	U. S. Route
	State Route

DUPLICATE COPY

QUADRANGLE LOCATION  
N4045-WB730/7.5

1964  
PHOTOREVISED 1980  
DMA 3465 1 SE-SERIES Y863