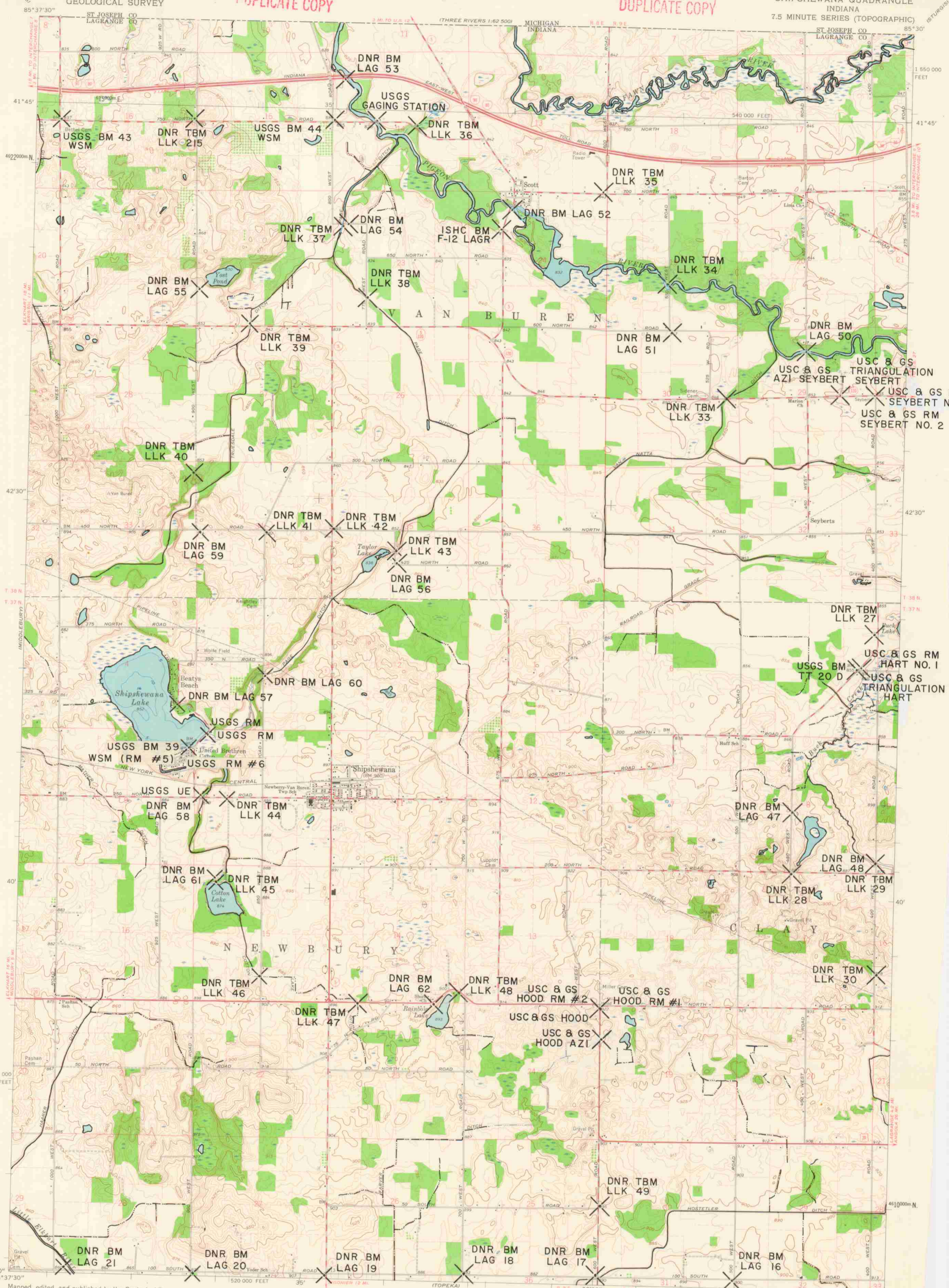


DUPLICATE COPY

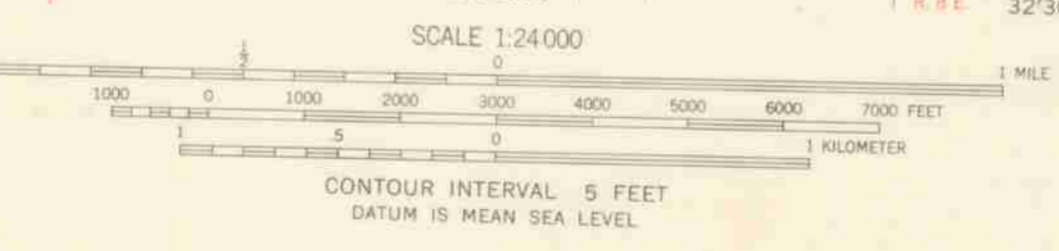
DUPLICATE COPY



Mapped, edited, and published by the Geological Survey
Control by USGS and USC&GS
Topography by photogrammetric methods from aerial
photographs taken 1957 and 1959. Field checked 1961
Depth curves and soundings compiled from USGS-Indiana
Department of Conservation lake charts
Polyconic projection, 1927 North American datum
10,000-foot grid based on Indiana coordinate system, east zone
1000-meter Universal Transverse Mercator grid ticks,
zone 16, shown in blue
Fine red dashed lines indicate selected fence and field lines where
generally visible on aerial photographs. This information is unchecked

DUPLICATE COPY

APPROXIMATE MEAN
DECLINATION, 1961



THIS MAP COMPLIES WITH NATIONAL MAP ACCURACY STANDARDS
FOR SALE BY U.S. GEOLOGICAL SURVEY, WASHINGTON 25, D. C.
AND INDIANA DEPARTMENT OF CONSERVATION, INDIANAPOLIS, INDIANA
A FOLDER DESCRIBING TOPOGRAPHIC MAPS AND SYMBOLS IS AVAILABLE ON REQUEST

ROAD CLASSIFICATION

Heavy-duty	Light-duty
Medium-duty	Unimproved dirt
Interstate Route	U.S. Route
	State Route

DUPLICATE COPY

QUADRANGLE LOCATION

SHIPSHEWANA, IND.
N4137.5-W8530.7.5

1961

Reduce to 40% of ORIGINAL SIZE