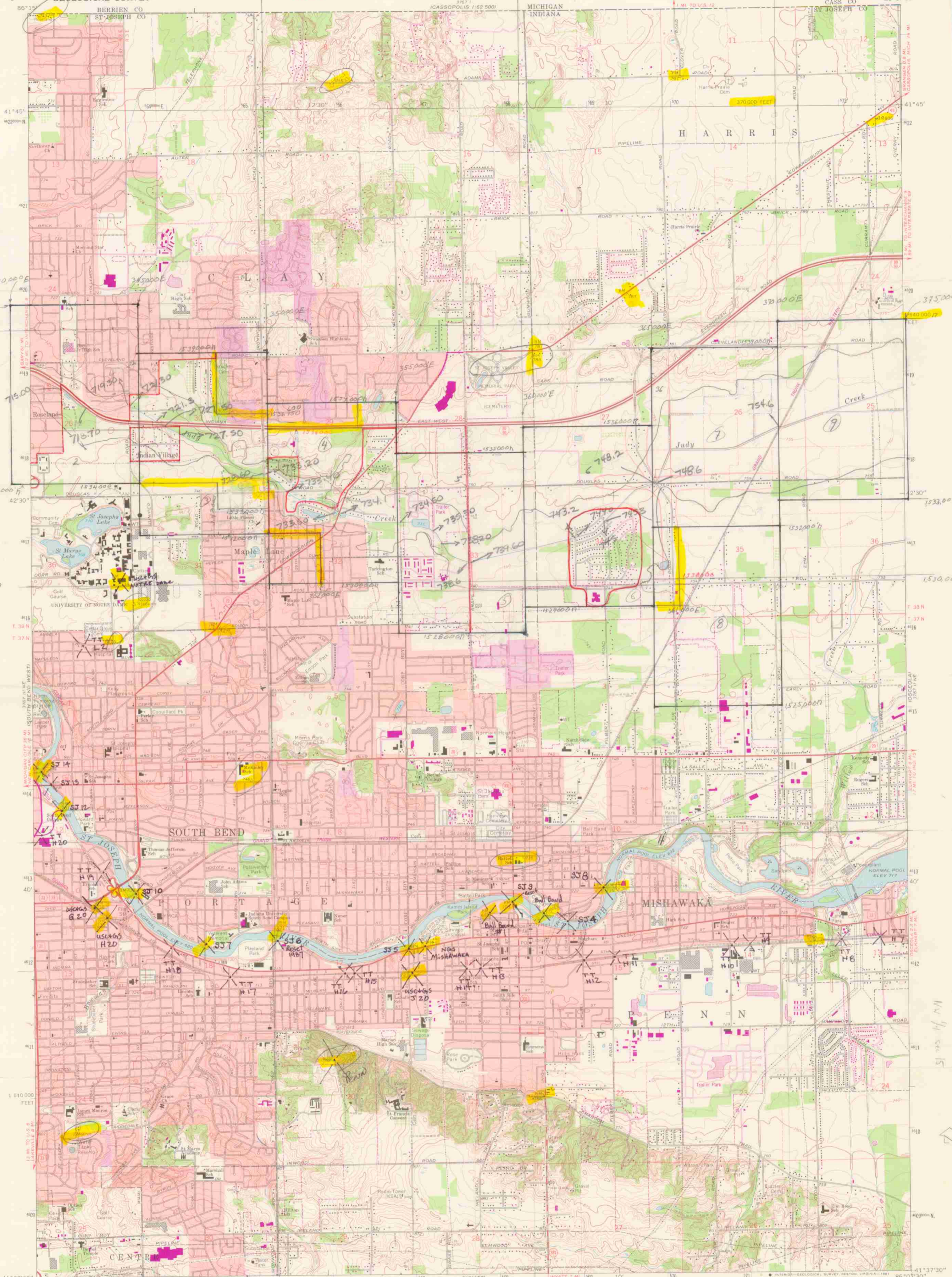


DUPLICATE COPY

DUPLICATE COPY



Mapped, edited, and published by the Geological Survey
Revised in cooperation with Indiana Department of
Natural Resources

Control by USGS, NOS/NOAA, and Indiana Flood Control
and Water Resources Commission

Planimetry by photogrammetric methods from aerial photographs
taken 1952. Topography by planetable surveys 1957-1958
Revised from aerial photographs taken 1967. Field checked 1969

Polygonic projection. 10,000-foot grid based on Indiana
coordinate system, east zone. 1000-meter Universal Transverse
Mercator grid ticks, zone 16, shown in blue. 1927 North American
Datum. To place on the predicted North American Datum 1983
move the projection lines 2 meters east as shown by dashed corner ticks

Fine red dashed lines indicate selected fence and field lines where
generally visible on aerial photographs. This information is unchecked

Red tint indicates areas in which only landmark buildings are shown

UTM GRID AND 1980 MAGNETIC NORTH
DECLINATION AT CENTER OF SHEET



SCALE 1:24,000
NATIONAL GEODETIC VERTICAL DATUM OF 1929

CONTOUR INTERVAL 5 FEET
THIS MAP COMPLIES WITH NATIONAL MAP ACCURACY STANDARDS
FOR SALE BY U. S. GEOLOGICAL SURVEY, RESTON, VIRGINIA 22092
AND INDIANA DEPARTMENT OF NATURAL RESOURCES, INDIANAPOLIS, INDIANA 46204
A FOLDER DESCRIBING TOPOGRAPHIC MAPS AND SYMBOLS IS AVAILABLE ON REQUEST

ROAD CLASSIFICATION	
Primary highway, all weather, hard surface	Light-duty road, all weather, improved surface
Secondary highway, all weather, hard surface	Unimproved road, fair or dry weather
Interstate Route	U. S. Route
	State Route

SOUTH BEND EAST, IND.
N4137.5-W8607.5/7.5

1969
PHOTOREVISED 1980
DMA 3767 11 NW-SERIES V851

Revisions shown in purple and woodland compiled in
cooperation with State of Indiana agencies from
aerial photographs taken 1977 and other source data
This information not field checked. Map edited 1980
Purple tint indicates extension of urban areas

QUADRANGLE LOCATION



INDIANA

Vertical text on the right edge of the map, including 'HARRIS' and 'INDIANA'.