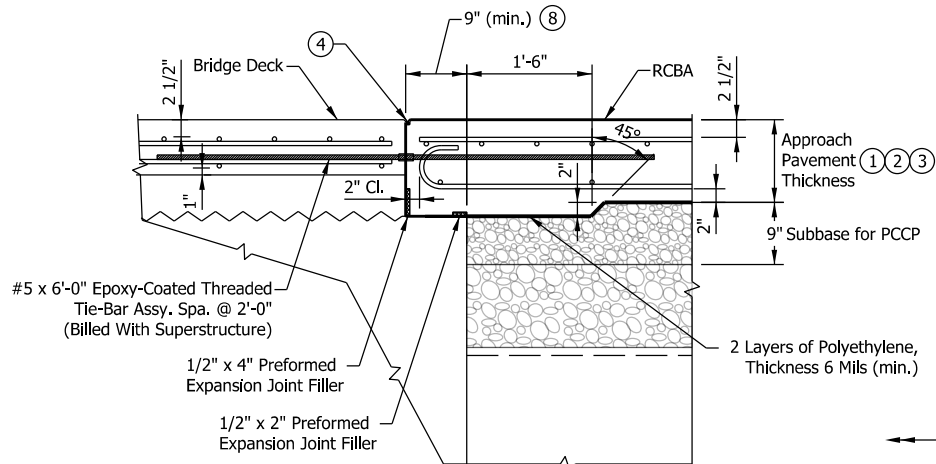
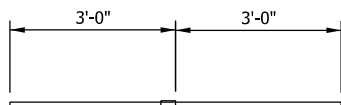


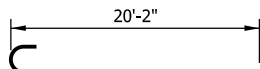
**SECTION THROUGH APPROACH**



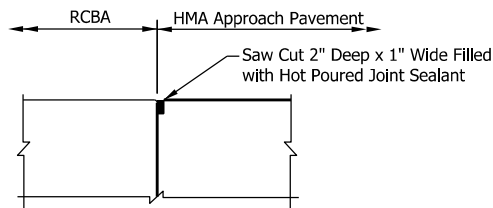
**PAVEMENT LEDGE DETAIL**



**#5E x 6'-0" Epoxy-Coated Threaded Tie-Bar Assembly**



**591 x 20'-9"**



**RCBA END DETAIL  
(ONLY APPLICABLE AT LOCATIONS WITHOUT TERMINAL JOINT)**

**NOTES:**

- ① See plans for approach pavement thickness.
- ② For HMA approach pavement:  
RCBA = 10 in. if design year AADT < 1000  
RCBA = 12 in. if design year AADT ≥ 1000
- ③ For PCCP approach pavement:  
RCBA = 12 in. if pavement thickness < 12 in.  
RCBA = Same as pavement thickness, if pavement thickness ≥ 12 in.
- ④ See Standard Drawing series E 609-BRJT for joint type I-A details.
5. See Standard Drawing series E 703-BRST for reinforcing-bar bending details and notes.
- ⑥ When shown on the plans, see Standard Drawing series E 503-BATJ for terminal joint and sleeper slab details.
- ⑦ When the RCBA is constructed without a terminal joint, subgrade treatment shall be omitted and geotextile shall be placed under subbase for PCCP.
- ⑧ See plans for project specific pavement ledge dimensions.

THIS RPD SUPERSEDES E 609-RCBA-04

INDIANA DEPARTMENT OF TRANSPORTATION

REINFORCED CONCRETE BRIDGE  
APPROACH DETAILS

EFFECTIVE FOR LETTINGS ON OR AFTER 9-01-24

RECURRING PLAN DETAIL NO. 609-B-323d

Sheet 01 of 01