



DIVISION OF FAMILY RESOURCES

Parke County Monthly Management Report May 2024

State of Indiana

Eric Holcomb
Governor

Family and Social Services Administration

Dan Rusyniak, MD
Secretary

Division of Family Resources

Sunshine Beam
Interim Director

For questions regarding data on this report contact:
office.Communications@fssa.IN.gov



State of Indiana

Published June 2024



DIVISION OF FAMILY RESOURCES

Monthly Management Report

Reporting Month: May 2024

Location: Parke County

TEMPORARY ASSISTANCE FOR NEEDY FAMILIES (TANF)

Child-Only and One-Parent Families	May 2024	April 2024	May 2023	Annual Change
Number of families receiving TANF Grants	13	17	13	0.00%
Total number of grant recipients	24	38	21	14.29%
Number of adult grant recipients	0	3	0	0%
Number of child grant recipients	24	35	21	14.29%
Total payments	\$2,536	\$3,637	\$2,276	11.42%
Average payment per case	\$195.08	\$213.94	\$175.08	11.42%
Average payment per recipient	\$105.67	\$95.71	\$108.38	-2.50%
Number of cases with benefits reduced to zero	0	0	1	-100.00%
Number of recipients with benefits reduced to zero	0	0	1	-100.00%
Number of adult recipients with benefit reduced to zero	0	0	0	0%
Number of child recipients with benefit reduced to zero	0	0	1	-100.00%

Two-Parent Families	May 2024	April 2024	May 2023	Annual Change
Number of families receiving TANF Grants	0	0	0	0%
Total number of grant recipients	0	0	0	0%
Number of adult grant recipients	0	0	0	0%
Number of child grant recipients	0	0	0	0%
Total payments	\$0	\$0	\$0	0%
Average payment per case	\$0.00	\$0.00	\$0.00	0.00%
Average payment per recipient	\$0.00	\$0.00	\$0.00	0.00%
Number of cases with benefits reduced to zero	0	0	0	0%
Number of recipients with benefits reduced to zero	0	0	0	0%
Number of adult recipients with benefit reduced to zero	0	0	0	0%
Number of child recipients with benefit reduced to zero	0	0	0	0%

Note:

For August 2021, a one time payment of \$400 per recipient was included in the Total payments and Average payments. TANF section rules changed to reflect Federal reporting logic effective September 2021. For August 2022, a one-time payment of \$269 per recipient was included in the Total payments and Average payments.

Source:



DIVISION OF FAMILY RESOURCES

Monthly Management Report

Reporting Month: May 2024

Location: Parke County

TANF - APPLICATIONS

	May 2024	April 2024	May 2023	Annual Change
Number of Applications	13	15	16	-18.75%

TANF - RECIPIENTS BY ZIP CODE

ZIP Code	Households	Recipients
47832	1	4
47859	1	2
47862	1	1
47872	8	12
47989	1	3
None	0	2
Total	12	24



DIVISION OF FAMILY RESOURCES

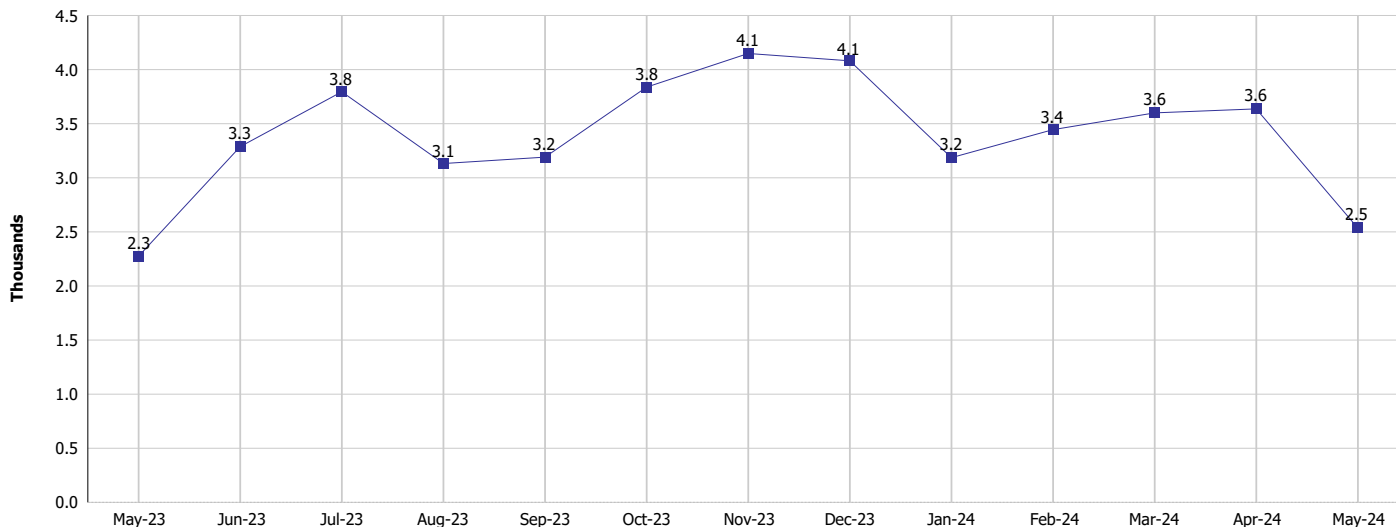
Monthly Management Report

Reporting Month: May 2024

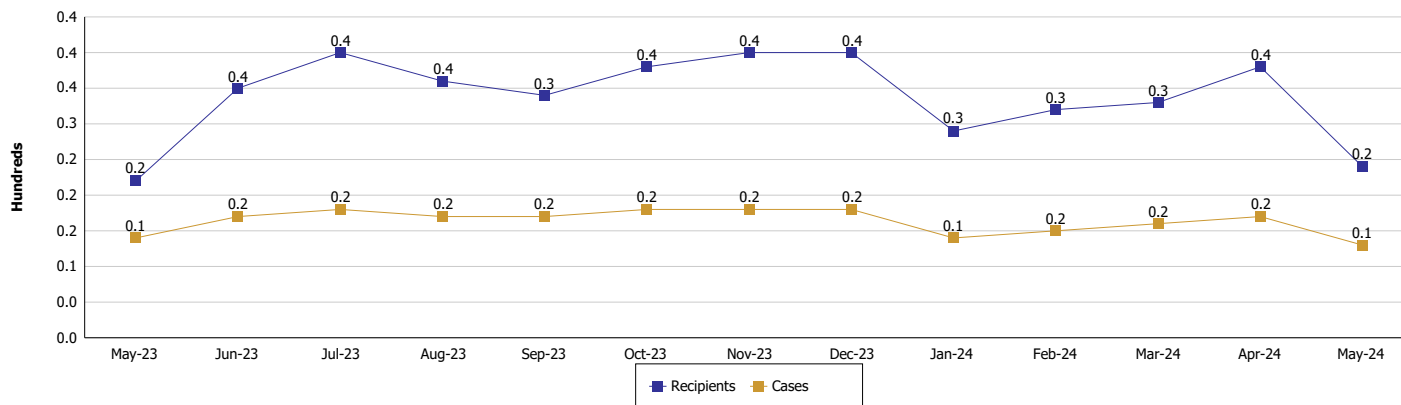
Location: Parke County

TEMPORARY ASSISTANCE FOR NEEDY FAMILIES (TANF)

TANF Regular And TANF Two-Parent Cash Assistance



TANF Cases and Recipients (TANF Regular and TANF Two-Parent)



Note:

For August 2021, a one time payment of \$400 per recipient was included in the Total payments and Average payments. TANF section rules changed to reflect Federal reporting logic effective September 2021. For August 2022, a one-time payment of \$269 per recipient was included in the Total payments and Average payments.



DIVISION OF FAMILY RESOURCES

Monthly Management Report

Reporting Month: May 2024

Location: Parke County

SUPPLEMENTAL NUTRITION ASSISTANCE PROGRAM (SNAP)

	May 2024	April 2024	May 2023	Annual Change
Total issuance	\$285,791	\$296,479	\$281,238	1.62%
Number of households receiving SNAP benefits	730	736	733	-0.41%
Number of recipients	1,541	1,567	1,564	-1.47%
Average issuance per household	\$391.49	\$402.82	\$383.68	2.04%
Average issuance per recipient	\$185.46	\$189.2	\$179.82	3.14%
Number of Applications	90	77	83	8.43%



DIVISION OF FAMILY RESOURCES

Monthly Management Report

Reporting Month: May 2024

Location: Parke County

SNAP - RECIPIENTS BY ZIP CODE

ZIP Code	Households	Recipients
46016	1	1
46168	1	4
46175	1	4
46218	1	3
46260	1	1
46268	1	1
46312	1	1
46901	1	1
47804	1	1
47832	36	80
47834	13	40
47836	3	7
47837	20	59
47842	1	6
47847	1	4
47859	26	50
47860	15	30
47862	100	235
47872	367	743
47874	81	163
47952	35	61
47974	1	1
47989	4	10
None	18	35
Totals	730	1,541



DIVISION OF FAMILY RESOURCES

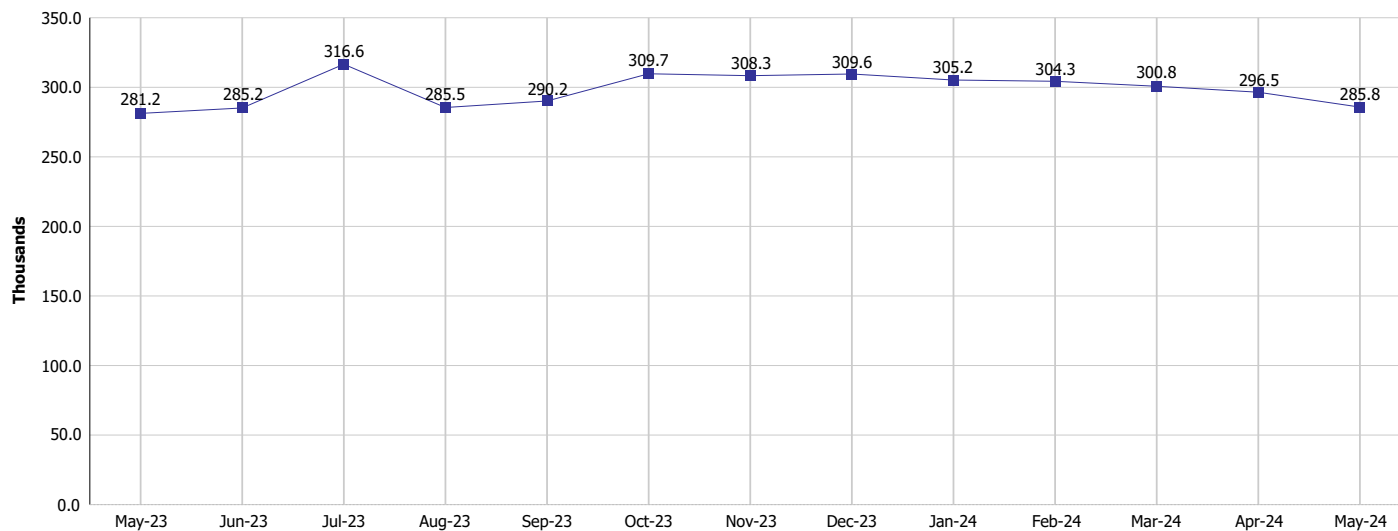
Monthly Management Report

Reporting Month: May 2024

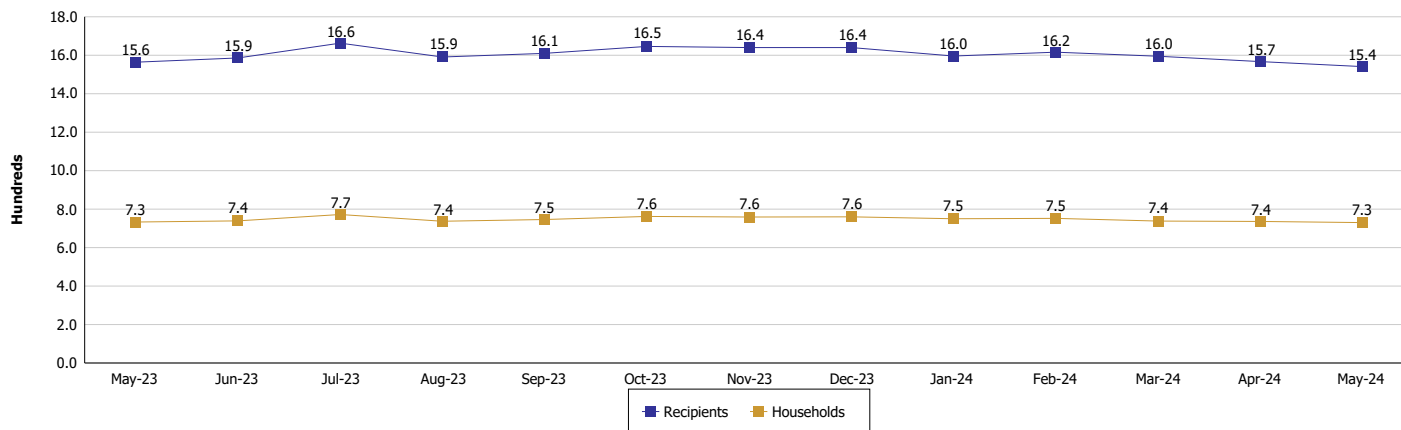
Location: Parke County

SUPPLEMENTAL NUTRITION ASSISTANCE PROGRAM (SNAP)

SNAP Issuance



SNAP Households and Recipients



Note:

Run Date: Jun 12, 2024



DIVISION OF FAMILY RESOURCES

Monthly Management Report

Reporting Month: May 2024

Location: Parke County

HIP 2.0 and SNAP

	May 2024	April 2024	May 2023	Annual Change
Total HIP 2.0 Members	1,899	1,908	2,232	-14.92%
HIP Members also SNAP Recipients	543	552	558	-2.69%
Percentage HIP Members SNAP Recipients	28.6%	28.9%	25.0%	3.59
HIP Members SNAP ABAWDs	33	33	32	3.12%
Percentage HIP Members SNAP ABAWDs	1.7%	1.7%	1.4%	0.3



DIVISION OF FAMILY RESOURCES

Monthly Management Report

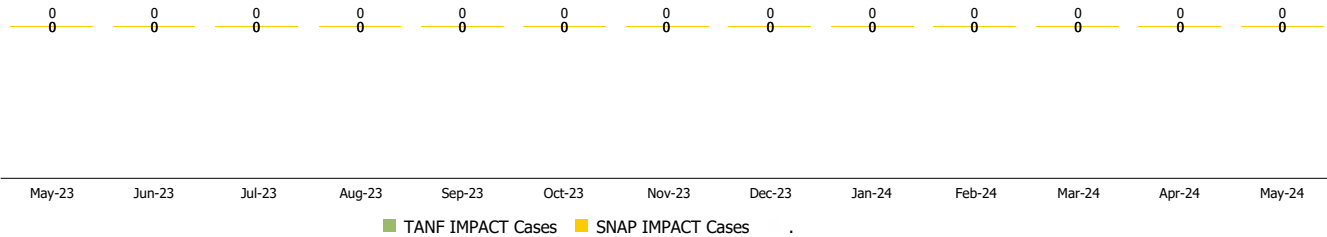
Reporting Month: May 2024

Location: Parke County

INDIANA MANPOWER PLACEMENT AND COMPREHENSIVE TRAINING (IMPACT)

	May 2024	April 2024	May 2023	Annual Change
Number of IMPACT cases	0	0	0	
Number of TANF IMPACT adults	0	0	0	
Number of SNAP IMPACT Cases	0	0	0	
Total number of adults employed	5	5	3	66.67%
Number of TANF IMPACT adults newly employed (within past 30 days)	0	0	0	
Number of SNAP IMPACT adults employed	5	5	3	66.67%
Total number of adults ineligible due to employment	5	2	4	25.00%
Number of TANF adults ineligible due to employment	0	0	0	
Number of SNAP adults ineligible due to employment	5	2	4	25.00%

IMPACT Caseloads
(SNAP, TANF, Total Caseload)



Note:

Effective January 2022, these numbers have been adjusted to reflect only those actually participating in IMPACT.