



DIVISION OF FAMILY RESOURCES

Statewide Monthly Management Report July 2024

State of Indiana

Eric Holcomb
Governor

Family and Social Services Administration

Dan Rusyniak, MD
Secretary

Division of Family Resources

Sunshine Beam
Interim Director

For questions regarding data on this report contact:
office.Communications@fssa.IN.gov



State of Indiana

Published August 2024



DIVISION OF FAMILY RESOURCES

Monthly Management Report

Reporting Month: July 2024

Location: Statewide

TEMPORARY ASSISTANCE FOR NEEDY FAMILIES (TANF)

Child-Only and One-Parent Families	July 2024	June 2024	July 2023	Annual Change
Number of families receiving TANF Grants	4,653	4,500	4,026	15.57%
Total number of grant recipients	10,095	9,723	8,290	21.77%
Number of adult grant recipients	1,802	1,646	1,077	67.32%
Number of child grant recipients	8,293	8,077	7,213	14.97%
Total payments	\$1,688,536	\$1,040,362	\$801,286	110.73%
Average payment per case	\$362.89	\$231.19	\$199.03	82.33%
Average payment per recipient	\$167.26	\$107.00	\$96.66	73.05%
Number of cases with benefits reduced to zero	112	140	112	0.00%
Number of recipients with benefits reduced to zero	218	275	215	1.40%
Number of adult recipients with benefit reduced to zero	28	33	25	12.00%
Number of child recipients with benefit reduced to zero	190	242	190	0.00%

Two-Parent Families	July 2024	June 2024	July 2023	Annual Change
Number of families receiving TANF Grants	752	803	829	-9.29%
Total number of grant recipients	2,777	2,952	3,088	-10.07%
Number of adult grant recipients	1,491	1,592	1,653	-9.80%
Number of child grant recipients	1,286	1,360	1,435	-10.38%
Total payments	\$384,828	\$278,227	\$262,159	46.79%
Average payment per case	\$511.74	\$346.48	\$316.24	61.82%
Average payment per recipient	\$138.58	\$94.25	\$84.90	63.23%
Number of cases with benefits reduced to zero	5	2	3	66.67%
Number of recipients with benefits reduced to zero	18	7	12	50.00%
Number of adult recipients with benefit reduced to zero	10	4	6	66.67%
Number of child recipients with benefit reduced to zero	8	3	6	33.33%

Note:

For August 2021, a one time payment of \$400 per recipient was included in the Total payments and Average payments. TANF section rules changed to reflect Federal reporting logic effective September 2021. For August 2022, a one-time payment of \$269 per recipient was included in the Total payments and Average payments.

Source:



DIVISION OF FAMILY RESOURCES

Monthly Management Report

Reporting Month: July 2024

Location: Statewide

TANF - APPLICATIONS

	July 2024	June 2024	July 2023	Annual Change
Number of Applications	8,950	7,286	8,100	10.49%



DIVISION OF FAMILY RESOURCES

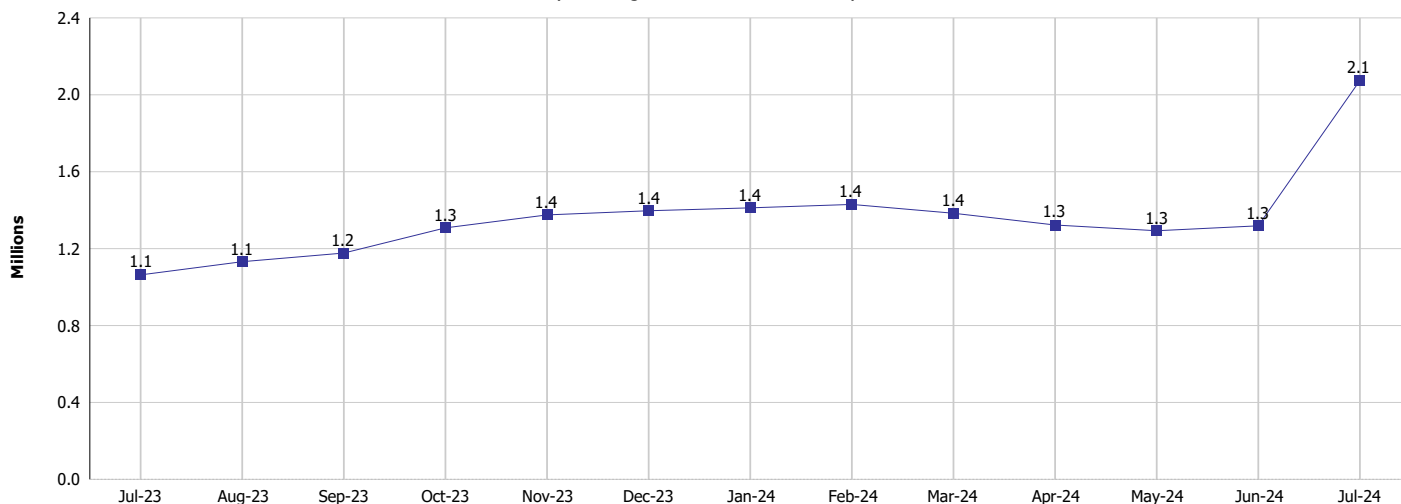
Monthly Management Report

Reporting Month: July 2024

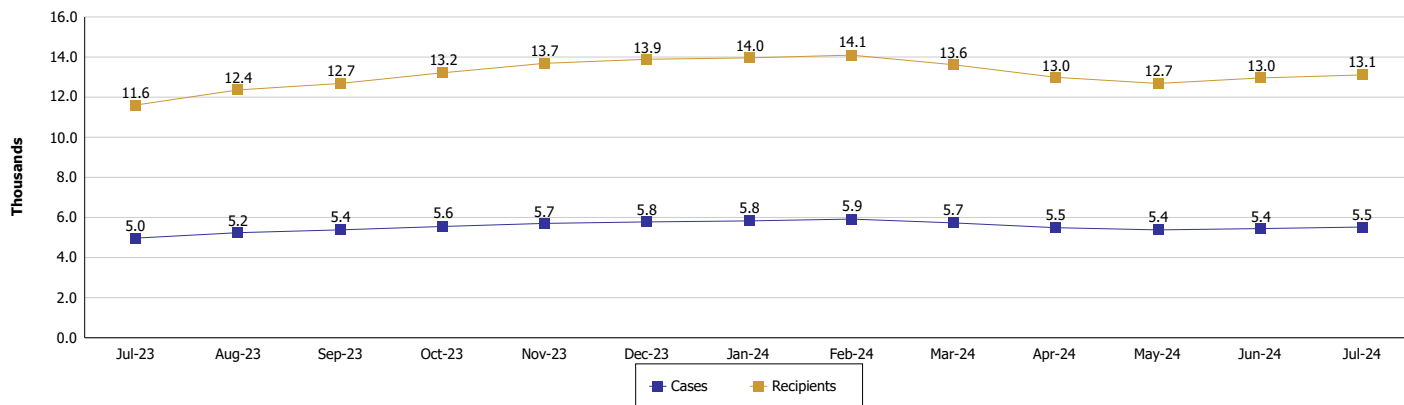
Location: Statewide

TEMPORARY ASSISTANCE FOR NEEDY FAMILIES (TANF)

TANF Cash Assistance (TANF Regular and TANF Two-Parent)



TANF Cases and Recipients (TANF Regular and TANF Two-Parent)



Note:

For August 2021, a one time payment of \$400 per recipient was included in the Total payments and Average payments. TANF section rules changed to reflect Federal reporting logic effective September 2021.
 For August 2022, a one-time payment of \$269 per recipient was included in the Total payments and Average payments.



DIVISION OF FAMILY RESOURCES

Monthly Management Report

Reporting Month: July 2024

Location: Statewide

SUPPLEMENTAL NUTRITION ASSISTANCE PROGRAM (SNAP)

	July 2024	June 2024	July 2023	Annual Change
Total issuance	\$121,835,632	\$120,413,964	\$117,047,975	4.09%
Number of households receiving SNAP benefits	289,873	287,519	285,100	1.67%
Number of recipients	606,518	602,147	598,704	1.31%
Average issuance per household	\$420.31	\$418.80	\$410.55	2.38%
Average issuance per recipient	\$200.88	\$199.97	\$195.50	2.75%
Number of Applications	45,853	38,951	44,179	3.79%



DIVISION OF FAMILY RESOURCES

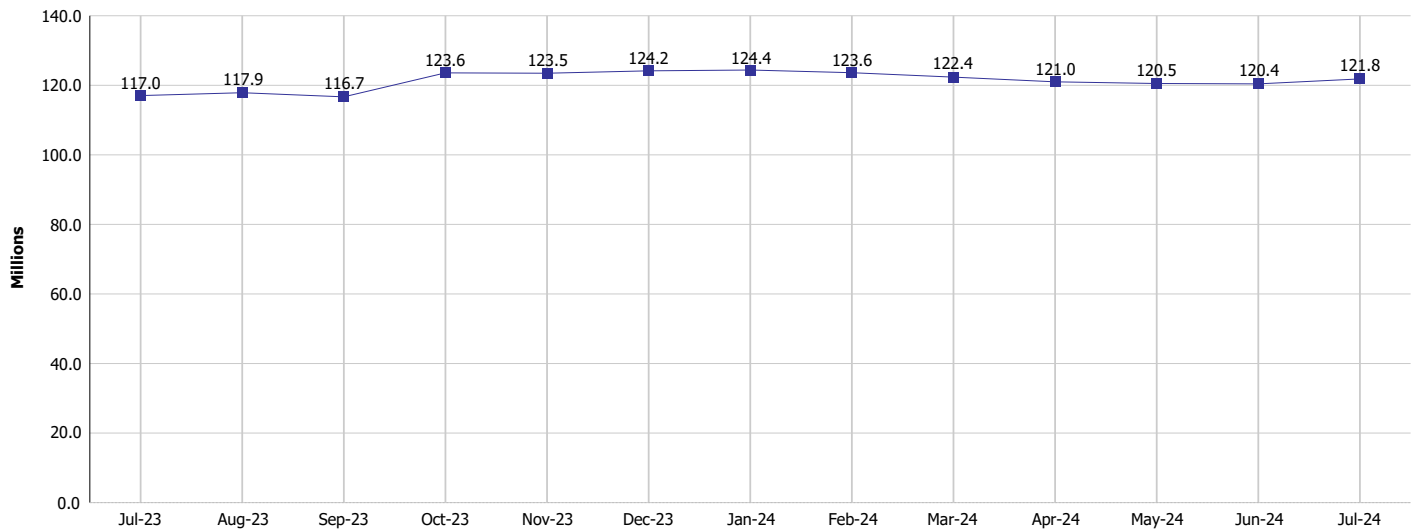
Monthly Management Report

Reporting Month: July 2024

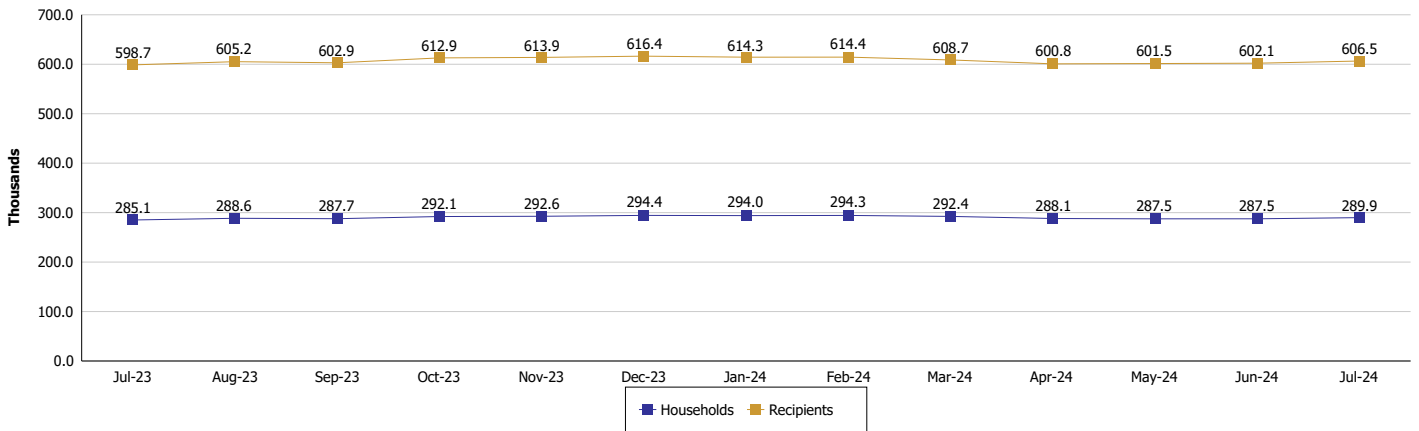
Location: Statewide

SUPPLEMENTAL NUTRITION ASSISTANCE PROGRAM (SNAP)

SNAP Issuance



SNAP Households and Recipients



Note:

Run Date: Aug 13, 2024



DIVISION OF FAMILY RESOURCES

Monthly Management Report

Reporting Month: July 2024

Location: Statewide

HIP 2.0 and SNAP

	July 2024	June 2024	July 2023	Annual Change
Total HIP 2.0 Members	757,167	760,298	823,876	-8.10%
HIP Members also SNAP Recipients	182,472	180,939	179,450	1.68%
Percentage HIP Members SNAP Recipients	24.1%	23.8%	21.8%	2.32
HIP Members SNAP ABAWDs	10,234	8,767	11,110	-7.88%
Percentage HIP Members SNAP ABAWDs	1.4%	1.2%	1.3%	0.0

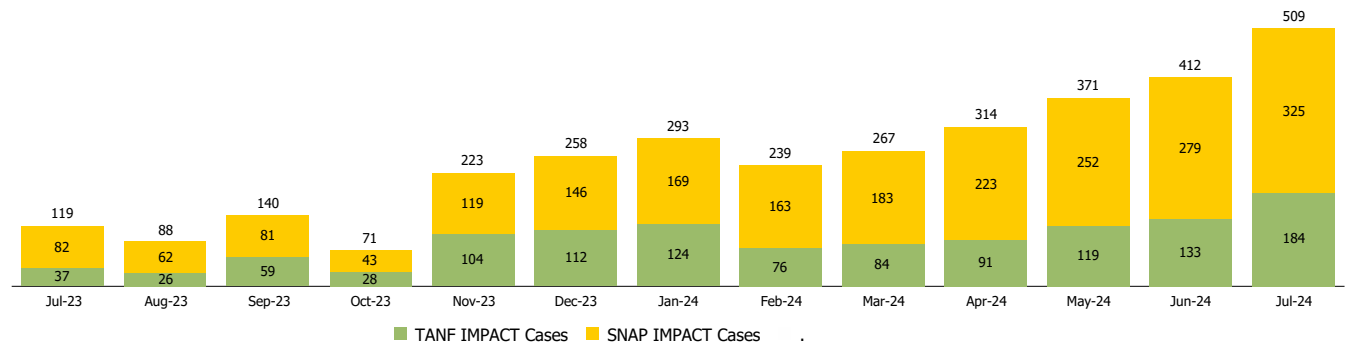
Monthly Management Report

Reporting Month: July 2024 Location: Statewide

INDIANA MANPOWER PLACEMENT AND COMPREHENSIVE TRAINING (IMPACT)

	July 2024	June 2024	July 2023	Annual Change
Number of IMPACT cases	509	412	119	327.73%
Number of TANF IMPACT adults	184	133	37	397.30%
Number of SNAP IMPACT Cases	325	279	82	296.34%
Total number of adults employed	1,458	1,698	2,686	-45.72%
Number of TANF IMPACT adults newly employed (within past 30 days)	56	82	34	64.71%
Number of SNAP IMPACT adults employed	1,402	1,616	2,652	-47.13%
Total number of adults ineligible due to employment	1,570	1,686	1,786	-12.09%
Number of TANF adults ineligible due to employment	78	76	31	151.61%
Number of SNAP adults ineligible due to employment	1,492	1,610	1,755	-14.99%

IMPACT Caseloads
(SNAP, TANF, Total Caseload)



Note: Effective January 2022, these numbers have been adjusted to reflect only those actually participating in IMPACT.