



## DIVISION OF FAMILY RESOURCES

# Statewide Monthly Management Report August 2024

### State of Indiana

Eric Holcomb  
Governor

### Family and Social Services Administration

Dan Rusyniak, MD  
Secretary

### Division of Family Resources

Sunshine Beam  
Interim Director

For questions regarding data on this report contact:  
[office.Communications@fssa.IN.gov](mailto:office.Communications@fssa.IN.gov)



## State of Indiana

Published September 2024



## DIVISION OF FAMILY RESOURCES

### Monthly Management Report

Reporting Month: August 2024

Location: Statewide

#### TEMPORARY ASSISTANCE FOR NEEDY FAMILIES (TANF)

Child-Only and One-Parent Families	August 2024	July 2024	August 2023	Annual Change
Number of families receiving TANF Grants	4,826	4,653	4,236	13.93%
Total number of grant recipients	10,587	10,095	8,856	19.55%
Number of adult grant recipients	1,954	1,802	1,279	52.78%
Number of child grant recipients	8,633	8,293	7,577	13.94%
Total payments	\$1,815,480	\$1,688,536	\$852,789	112.89%
Average payment per case	\$376.19	\$362.89	\$201.32	86.86%
Average payment per recipient	\$171.48	\$167.26	\$96.30	78.08%
Number of cases with benefits reduced to zero	113	112	114	-0.88%
Number of recipients with benefits reduced to zero	210	218	223	-5.83%
Number of adult recipients with benefit reduced to zero	27	28	28	-3.57%
Number of child recipients with benefit reduced to zero	183	190	195	-6.15%

Two-Parent Families	August 2024	July 2024	August 2023	Annual Change
Number of families receiving TANF Grants	695	752	883	-21.29%
Total number of grant recipients	2,586	2,777	3,253	-20.50%
Number of adult grant recipients	1,380	1,491	1,759	-21.55%
Number of child grant recipients	1,206	1,286	1,494	-19.28%
Total payments	\$364,020	\$384,828	\$279,239	30.36%
Average payment per case	\$523.77	\$511.74	\$316.24	65.62%
Average payment per recipient	\$140.77	\$138.58	\$85.84	63.99%
Number of cases with benefits reduced to zero	2	5	7	-71.43%
Number of recipients with benefits reduced to zero	7	18	27	-74.07%
Number of adult recipients with benefit reduced to zero	4	10	14	-71.43%
Number of child recipients with benefit reduced to zero	3	8	13	-76.92%

**Note:**

For August 2021, a one time payment of \$400 per recipient was included in the Total payments and Average payments. TANF section rules changed to reflect Federal reporting logic effective September 2021. For August 2022, a one-time payment of \$269 per recipient was included in the Total payments and Average payments.

Source:



## DIVISION OF FAMILY RESOURCES

### Monthly Management Report

Reporting Month: August 2024

Location: Statewide

#### TANF - APPLICATIONS

	August 2024	July 2024	August 2023	Annual Change
<b>Number of Applications</b>	8,606	8,950	8,731	-1.43%



# DIVISION OF FAMILY RESOURCES

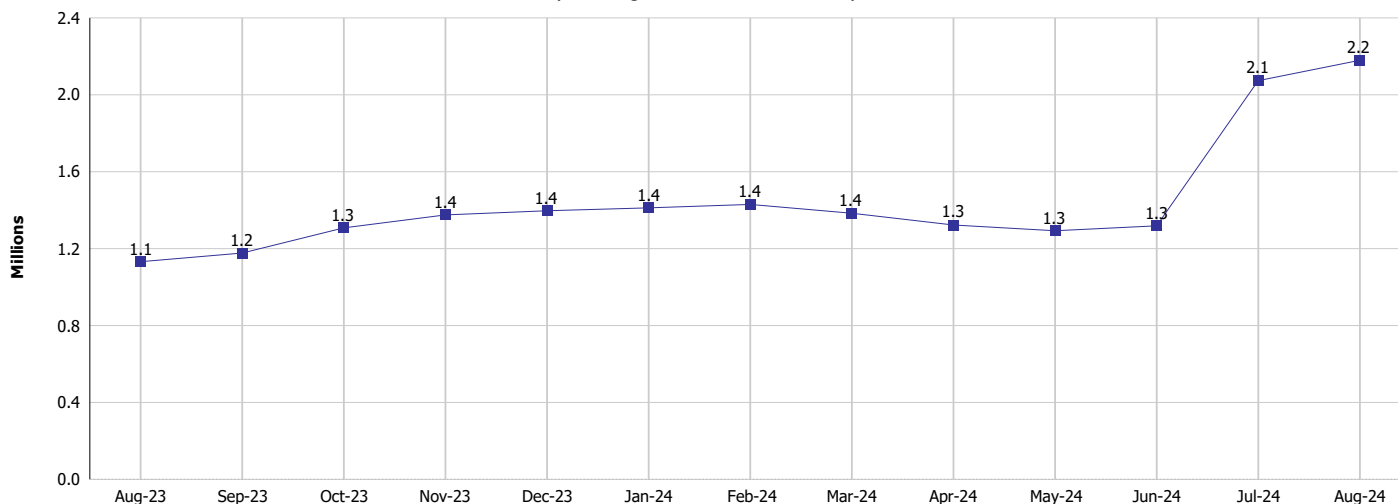
## Monthly Management Report

Reporting Month: August 2024

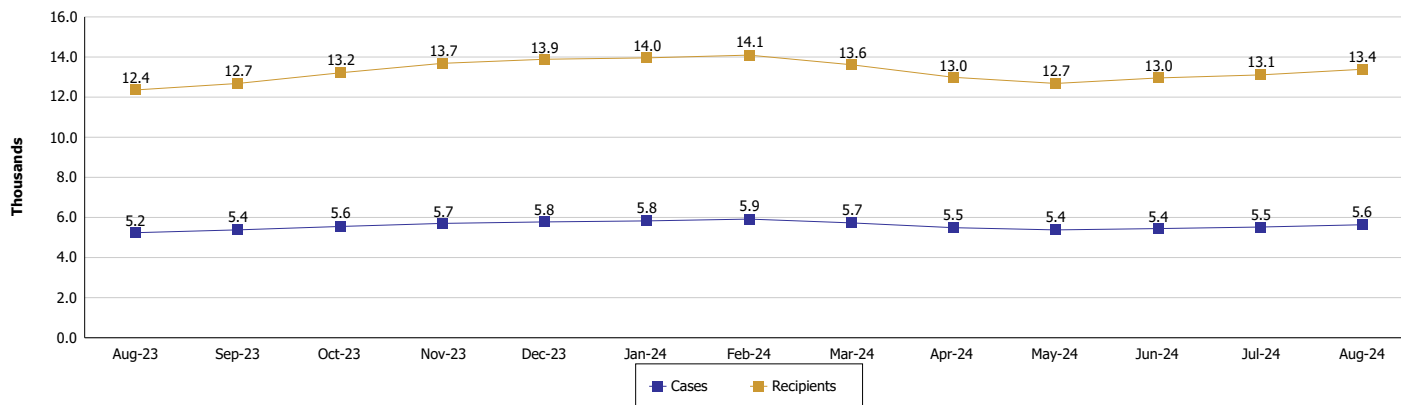
Location: Statewide

### TEMPORARY ASSISTANCE FOR NEEDY FAMILIES (TANF)

#### TANF Cash Assistance (TANF Regular and TANF Two-Parent)



#### TANF Cases and Recipients (TANF Regular and TANF Two-Parent)



**Note:**

For August 2021, a one time payment of \$400 per recipient was included in the Total payments and Average payments. TANF section rules changed to reflect Federal reporting logic effective September 2021. For August 2022, a one-time payment of \$269 per recipient was included in the Total payments and Average payments.

**Monthly Management Report**

<b>Reporting Month: August 2024</b>	<b>Location: Statewide</b>
-------------------------------------	----------------------------

**SUPPLEMENTAL NUTRITION ASSISTANCE PROGRAM (SNAP)**

	<b>August 2024</b>	<b>July 2024</b>	<b>August 2023</b>	<b>Annual Change</b>
Total issuance	\$123,183,758	\$121,835,632	\$117,866,856	4.51%
Number of households receiving SNAP benefits	292,989	289,873	288,578	1.53%
Number of recipients	612,555	606,518	605,214	1.21%
Average issuance per household	\$420.44	\$420.31	\$408.44	2.94%
Average issuance per recipient	\$201.10	\$200.88	\$194.75	3.26%
Number of Applications	43,594	45,853	49,242	-11.47%



# DIVISION OF FAMILY RESOURCES

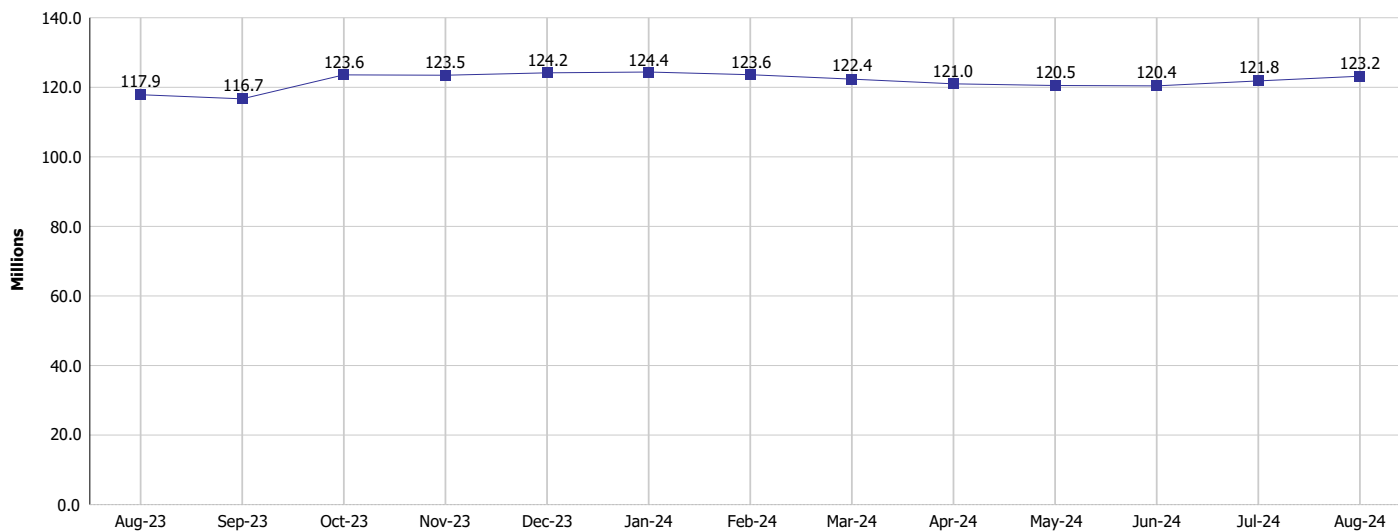
## Monthly Management Report

Reporting Month: August 2024

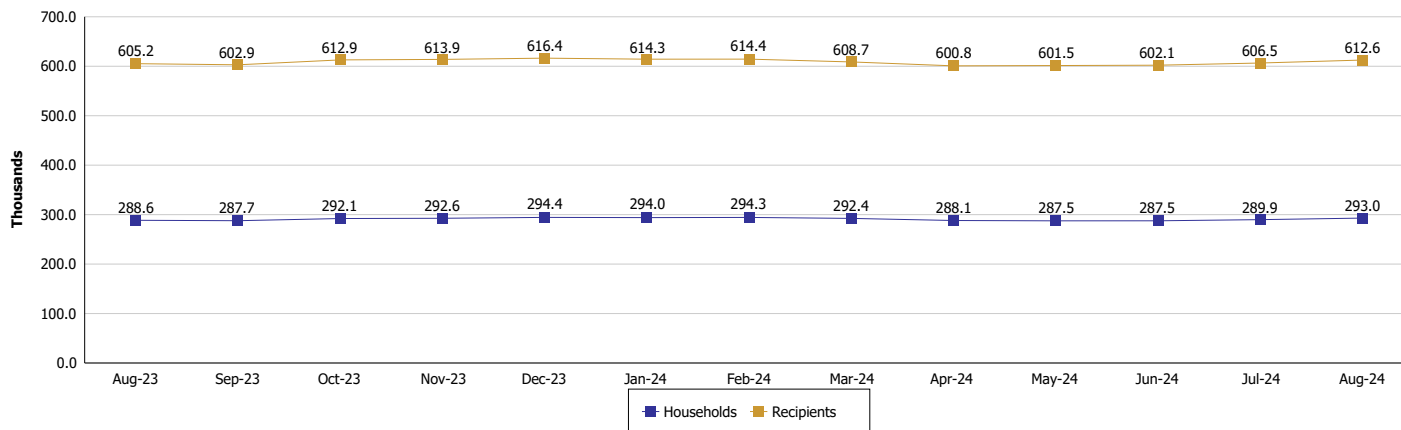
Location: Statewide

### SUPPLEMENTAL NUTRITION ASSISTANCE PROGRAM (SNAP)

#### SNAP Issuance



#### SNAP Households and Recipients



**Note:**

Run Date: Sep 12, 2024



## DIVISION OF FAMILY RESOURCES

### Monthly Management Report

Reporting Month: August 2024

Location: Statewide

#### HIP 2.0 and SNAP

	August 2024	July 2024	August 2023	Annual Change
Total HIP 2.0 Members	755,994	757,167	813,214	-7.04%
HIP Members also SNAP Recipients	184,386	182,472	181,232	1.74%
Percentage HIP Members SNAP Recipients	24.4%	24.1%	22.3%	2.10
HIP Members SNAP ABAWDs	11,052	10,234	10,531	4.95%
Percentage HIP Members SNAP ABAWDs	1.5%	1.4%	1.3%	0.2



## DIVISION OF FAMILY RESOURCES

### Monthly Management Report

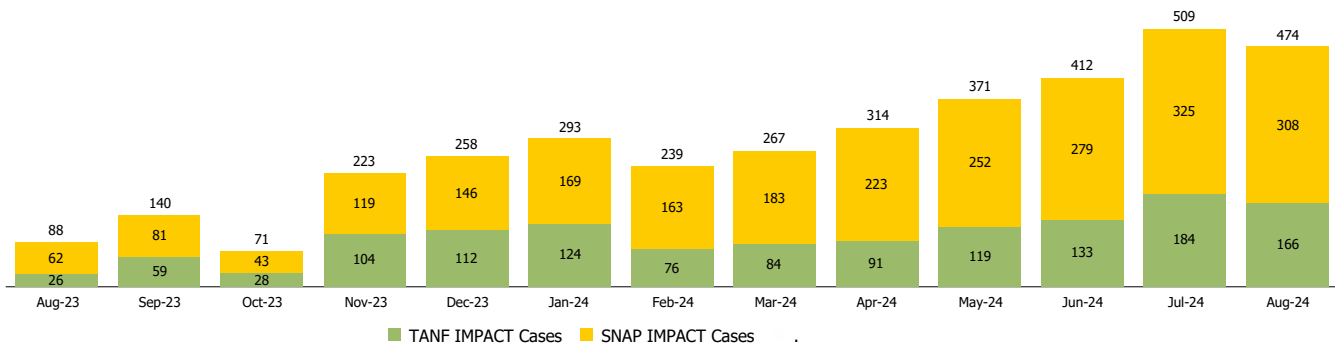
Reporting Month: August 2024

Location: Statewide

#### INDIANA MANPOWER PLACEMENT AND COMPREHENSIVE TRAINING (IMPACT)

	August 2024	July 2024	August 2023	Annual Change
Number of IMPACT cases	474	509	88	438.64%
Number of TANF IMPACT adults	166	184	26	538.46%
Number of SNAP IMPACT Cases	308	325	62	396.77%
Total number of adults employed	1,629	1,458	2,856	-42.96%
Number of TANF IMPACT adults newly employed (within past 30 days)	75	56	55	36.36%
Number of SNAP IMPACT adults employed	1,554	1,402	2,801	-44.52%
Total number of adults ineligible due to employment	1,686	1,570	1,683	0.18%
Number of TANF adults ineligible due to employment	99	78	31	219.35%
Number of SNAP adults ineligible due to employment	1,587	1,492	1,652	-3.93%

**IMPACT Caseloads**  
(SNAP, TANF, Total Caseload)



**Note:**

Effective January 2022, these numbers have been adjusted to reflect only those actually participating in IMPACT.