



DIVISION OF FAMILY RESOURCES

Statewide Monthly Management Report September 2024

State of Indiana

Eric Holcomb
Governor

Family and Social Services Administration

Dan Rusyniak, MD
Secretary

Division of Family Resources

Sunshine Beam
Interim Director

For questions regarding data on this report contact:
office.Communications@fssa.IN.gov



State of Indiana

Published December 2024



DIVISION OF FAMILY RESOURCES

Monthly Management Report

Reporting Month: September 2024

Location: Statewide

TEMPORARY ASSISTANCE FOR NEEDY FAMILIES (TANF)

Child-Only and One-Parent Families	September 2024	August 2024	September 2023	Annual Change
Number of families receiving TANF Grants	4,976	4,826	4,351	14.36%
Total number of grant recipients	11,082	10,587	9,148	21.14%
Number of adult grant recipients	2,085	1,954	1,398	49.14%
Number of child grant recipients	8,997	8,633	7,750	16.09%
Total payments	\$1,919,755	\$1,815,480	\$892,259	115.16%
Average payment per case	\$385.80	\$376.19	\$205.07	88.13%
Average payment per recipient	\$173.23	\$171.48	\$97.54	77.61%
Number of cases with benefits reduced to zero	115	113	118	-2.54%
Number of recipients with benefits reduced to zero	217	210	218	-0.46%
Number of adult recipients with benefit reduced to zero	29	27	23	26.09%
Number of child recipients with benefit reduced to zero	188	183	195	-3.59%

Pregnancy TANF Families	September 2024	August 2024	September 2023	Annual Change
Number of families receiving TANF Grants	110	0	0	0%
Total number of grant recipients	110	0	0	0%
Total payments	\$27,207.00	\$0.00	\$0.00	0%
Average payment per case	\$247.34	\$0.00	\$0.00	0.00%
Average payment per recipient	\$247.34	\$0.00	\$0.00	0.00%
Number of cases with benefits reduced to zero	0	0	0	0%
Number of recipients with benefits reduced to zero	0	0	0	0%

Two-Parent Families	September 2024	August 2024	September 2023	Annual Change
Number of families receiving TANF Grants	644	695	905	-28.84%
Total number of grant recipients	2,416	2,586	3,290	-26.57%
Number of adult grant recipients	1,282	1,380	1,802	-28.86%
Number of child grant recipients	1,134	1,206	1,488	-23.79%

Note:

For August 2021, a one time payment of \$400 per recipient was included in the Total payments and Average payments. TANF section rules changed to reflect Federal reporting logic effective September 2021. For August 2022, a one-time payment of \$269 per recipient was included in the Total payments and Average payments.

Source:



DIVISION OF FAMILY RESOURCES

Monthly Management Report

Reporting Month: September 2024

Location: Statewide

TEMPORARY ASSISTANCE FOR NEEDY FAMILIES (TANF)

Two-Parent Families	September 2024	August 2024	September 2023	Annual Change
Total payments	\$346,458	\$364,020	\$284,801	21.65%
Average payment per case	\$537.98	\$523.77	\$314.70	70.95%
Average payment per recipient	\$143.40	\$140.77	\$86.57	65.66%
Number of cases with benefits reduced to zero	2	2	7	-71.43%
Number of recipients with benefits reduced to zero	7	7	27	-74.07%
Number of adult recipients with benefit reduced to zero	4	4	14	-71.43%
Number of child recipients with benefit reduced to zero	3	3	13	-76.92%

Note:

For August 2021, a one time payment of \$400 per recipient was included in the Total payments and Average payments. TANF section rules changed to reflect Federal reporting logic effective September 2021.
 For August 2022, a one-time payment of \$269 per recipient was included in the Total payments and Average payments.

Source:



DIVISION OF FAMILY RESOURCES

Monthly Management Report

Reporting Month: September 2024

Location: Statewide

TANF - APPLICATIONS

	September 2024	August 2024	September 2023	Annual Change
Number of Applications	7,822	8,606	7,779	0.55%



DIVISION OF FAMILY RESOURCES

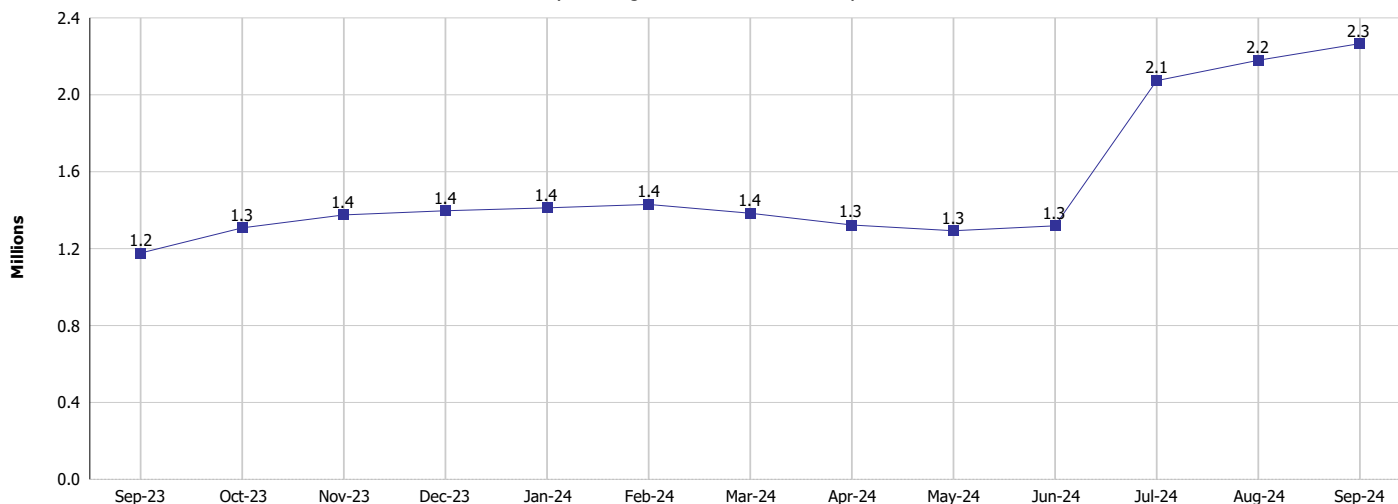
Monthly Management Report

Reporting Month: September 2024

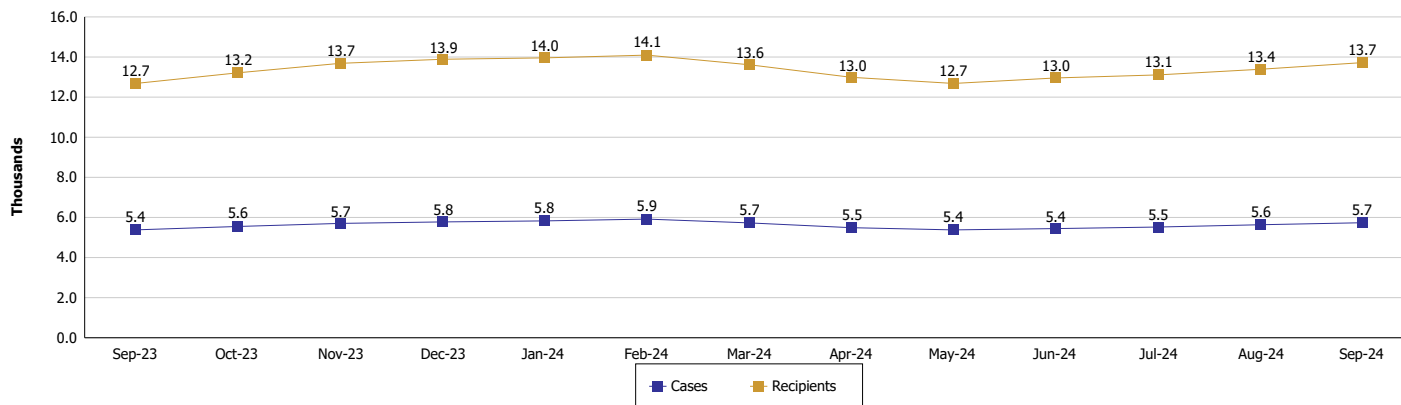
Location: Statewide

TEMPORARY ASSISTANCE FOR NEEDY FAMILIES (TANF)

TANF Cash Assistance (TANF Regular and TANF Two-Parent)



TANF Cases and Recipients (TANF Regular and TANF Two-Parent)



Note:

For August 2021, a one time payment of \$400 per recipient was included in the Total payments and Average payments. TANF section rules changed to reflect Federal reporting logic effective September 2021.

For August 2022, a one-time payment of \$269 per recipient was included in the Total payments and Average payments.



DIVISION OF FAMILY RESOURCES

Monthly Management Report

Reporting Month: September 2024

Location: Statewide

SUPPLEMENTAL NUTRITION ASSISTANCE PROGRAM (SNAP)

	September 2024	August 2024	September 2023	Annual Change
Total issuance	\$122,563,736	\$123,183,758	\$116,684,606	5.04%
Number of households receiving SNAP benefits	292,940	292,989	287,723	1.81%
Number of recipients	612,340	612,555	602,946	1.56%
Average issuance per household	\$418.39	\$420.44	\$405.54	3.17%
Average issuance per recipient	\$200.16	\$201.10	\$193.52	3.43%
Number of Applications	41,006	43,594	43,635	-6.02%



DIVISION OF FAMILY RESOURCES

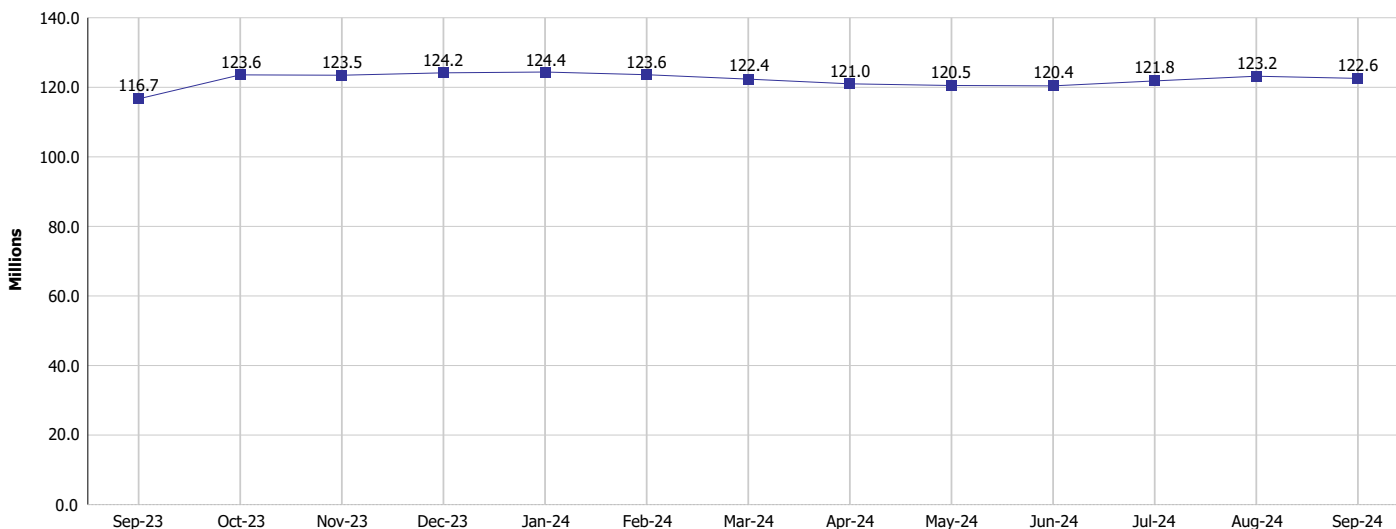
Monthly Management Report

Reporting Month: September 2024

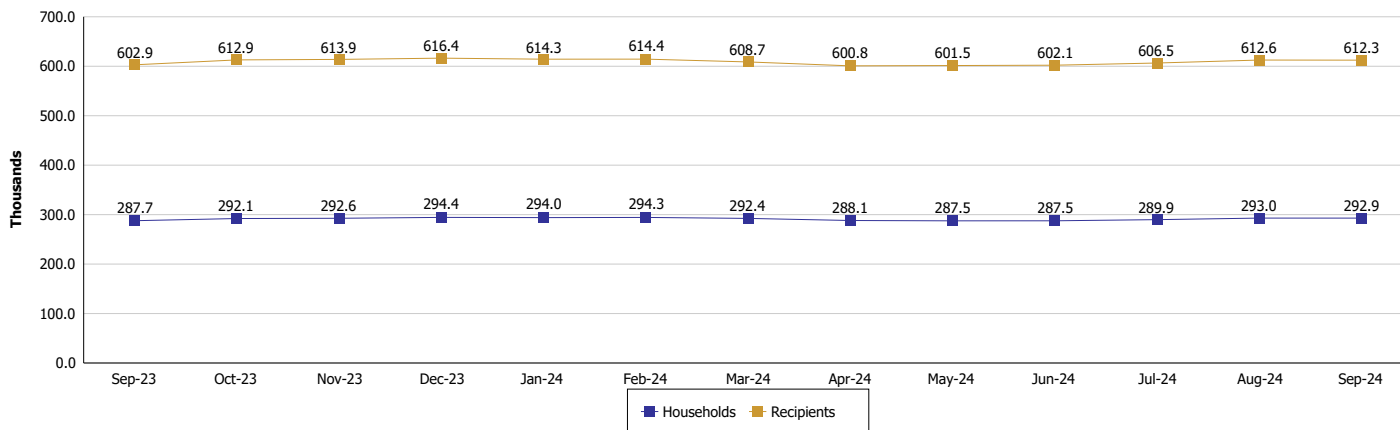
Location: Statewide

SUPPLEMENTAL NUTRITION ASSISTANCE PROGRAM (SNAP)

SNAP Issuance



SNAP Households and Recipients



Note:

Run Date: Dec 18, 2024



DIVISION OF FAMILY RESOURCES

Monthly Management Report

Reporting Month: September 2024

Location: Statewide

HIP 2.0 and SNAP

	September 2024	August 2024	September 2023	Annual Change
Total HIP 2.0 Members	758,265	755,994	802,300	-5.49%
HIP Members also SNAP Recipients	185,417	184,386	180,728	2.59%
Percentage HIP Members SNAP Recipients	24.5%	24.4%	22.5%	1.93
HIP Members SNAP ABAWDs	11,090	11,052	9,945	11.51%
Percentage HIP Members SNAP ABAWDs	1.5%	1.5%	1.2%	0.2



DIVISION OF FAMILY RESOURCES

Monthly Management Report

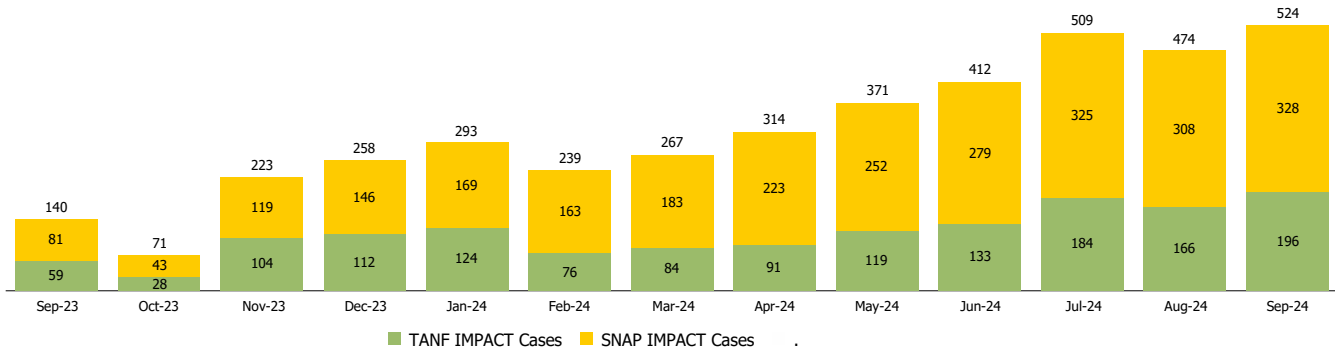
Reporting Month: September 2024

Location: Statewide

INDIANA MANPOWER PLACEMENT AND COMPREHENSIVE TRAINING (IMPACT)

	September 2024	August 2024	September 2023	Annual Change
Number of IMPACT cases	524	474	140	274.29%
Number of TANF IMPACT adults	196	166	59	232.20%
Number of SNAP IMPACT Cases	328	308	81	304.94%
Total number of adults employed	1,570	1,629	2,912	-46.09%
Number of TANF IMPACT adults newly employed (within past 30 days)	65	75	64	1.56%
Number of SNAP IMPACT adults employed	1,505	1,554	2,848	-47.16%
Total number of adults ineligible due to employment	1,854	1,686	2,082	-10.95%
Number of TANF adults ineligible due to employment	76	99	32	137.50%
Number of SNAP adults ineligible due to employment	1,778	1,587	2,050	-13.27%

IMPACT Caseloads
(SNAP, TANF, Total Caseload)



Note:

Effective January 2022, these numbers have been adjusted to reflect only those actually participating in IMPACT.