



DIVISION OF FAMILY RESOURCES

Statewide Monthly Management Report October 2024

State of Indiana

Eric Holcomb
Governor

Family and Social Services Administration

Dan Rusyniak, MD
Secretary

Division of Family Resources

Sunshine Beam
Interim Director

For questions regarding data on this report contact:
office.Communications@fssa.IN.gov



State of Indiana

Published November 2024



DIVISION OF FAMILY RESOURCES

Monthly Management Report

Reporting Month: October 2024

Location: Statewide

TEMPORARY ASSISTANCE FOR NEEDY FAMILIES (TANF)

Child-Only and One-Parent Families	October 2024	September 2024	October 2023	Annual Change
Number of families receiving TANF Grants	5,167	4,976	4,483	15.26%
Total number of grant recipients	11,667	11,082	9,543	22.26%
Number of adult grant recipients	2,246	2,085	1,504	49.34%
Number of child grant recipients	9,421	8,997	8,039	17.19%
Total payments	\$2,023,383	\$1,919,755	\$991,296	104.11%
Average payment per case	\$391.60	\$385.80	\$221.12	77.09%
Average payment per recipient	\$173.43	\$173.23	\$103.88	66.96%
Number of cases with benefits reduced to zero	112	115	115	-2.61%
Number of recipients with benefits reduced to zero	210	217	224	-6.25%
Number of adult recipients with benefit reduced to zero	29	29	25	16.00%
Number of child recipients with benefit reduced to zero	181	188	199	-9.05%

Pregnancy TANF Families	October 2024	September 2024	October 2023	Annual Change
Number of families receiving TANF Grants	117	110	0	0%
Total number of grant recipients	116	103	0	0%
Total payments	\$28,877.00	\$27,207.00	\$0.00	0%
Average payment per case	\$246.81	\$247.34	\$0.00	0.00%
Average payment per recipient	\$248.94	\$264.15	\$0.00	0.00%
Number of cases with benefits reduced to zero	1	0	0	0%
Number of recipients with benefits reduced to zero	1	0	0	0%

Two-Parent Families	October 2024	September 2024	October 2023	Annual Change
Number of families receiving TANF Grants	599	644	945	-36.61%
Total number of grant recipients	2,276	2,416	3,421	-33.47%
Number of adult grant recipients	1,193	1,282	1,887	-36.78%
Number of child grant recipients	1,083	1,134	1,534	-29.40%

Note:

For August 2021, a one time payment of \$400 per recipient was included in the Total payments and Average payments. TANF section rules changed to reflect Federal reporting logic effective September 2021. For August 2022, a one-time payment of \$269 per recipient was included in the Total payments and Average payments.

Source:



DIVISION OF FAMILY RESOURCES

Monthly Management Report

Reporting Month: October 2024

Location: Statewide

TEMPORARY ASSISTANCE FOR NEEDY FAMILIES (TANF)

Two-Parent Families	October 2024	September 2024	October 2023	Annual Change
Total payments	\$332,360	\$346,458	\$316,617	4.97%
Average payment per case	\$554.86	\$537.98	\$335.04	65.61%
Average payment per recipient	\$146.03	\$143.40	\$92.55	57.78%
Number of cases with benefits reduced to zero	3	2	7	-57.14%
Number of recipients with benefits reduced to zero	10	7	26	-61.54%
Number of adult recipients with benefit reduced to zero	6	4	14	-57.14%
Number of child recipients with benefit reduced to zero	4	3	12	-66.67%

Note:

For August 2021, a one time payment of \$400 per recipient was included in the Total payments and Average payments. TANF section rules changed to reflect Federal reporting logic effective September 2021.
 For August 2022, a one-time payment of \$269 per recipient was included in the Total payments and Average payments.

Source:



DIVISION OF FAMILY RESOURCES

Monthly Management Report

Reporting Month: October 2024

Location: Statewide

TANF - APPLICATIONS

	October 2024	September 2024	October 2023	Annual Change
Number of Applications	7,888	7,822	8,177	-3.53%



DIVISION OF FAMILY RESOURCES

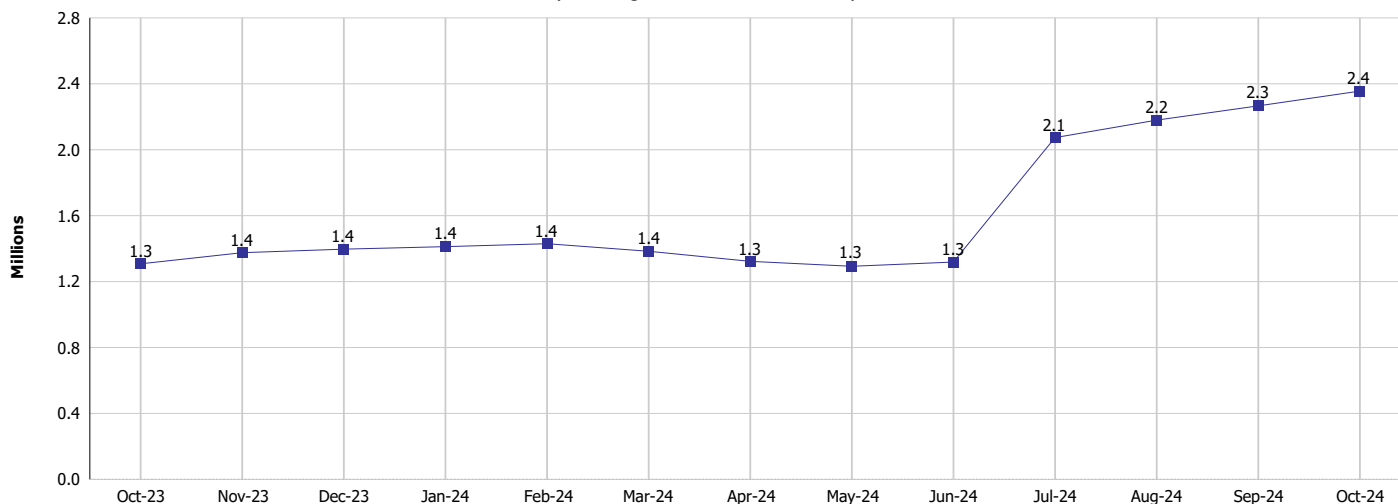
Monthly Management Report

Reporting Month: October 2024

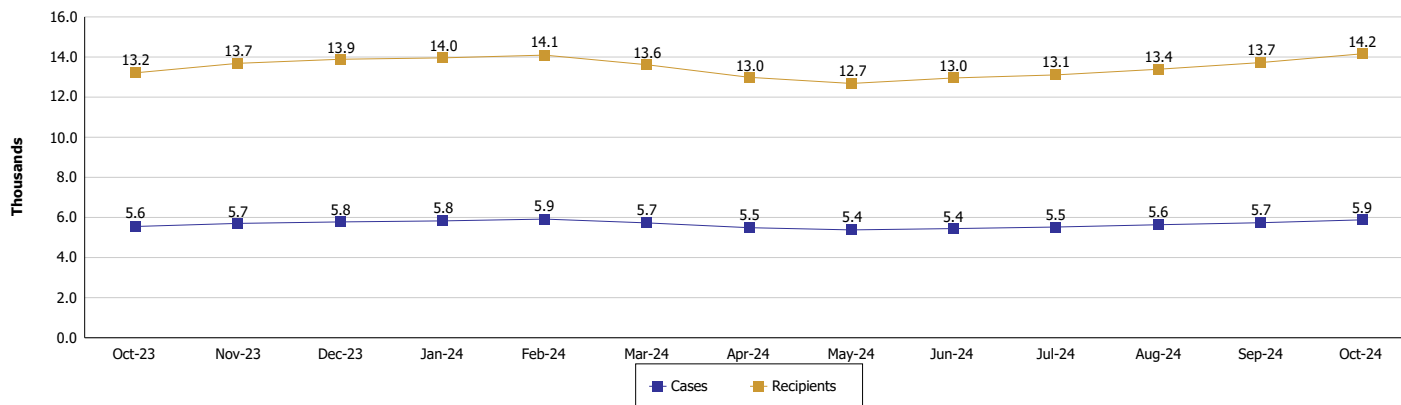
Location: Statewide

TEMPORARY ASSISTANCE FOR NEEDY FAMILIES (TANF)

TANF Cash Assistance (TANF Regular and TANF Two-Parent)



TANF Cases and Recipients (TANF Regular and TANF Two-Parent)



Note:

For August 2021, a one time payment of \$400 per recipient was included in the Total payments and Average payments. TANF section rules changed to reflect Federal reporting logic effective September 2021. For August 2022, a one-time payment of \$269 per recipient was included in the Total payments and Average payments.



DIVISION OF FAMILY RESOURCES

Monthly Management Report

Reporting Month: October 2024

Location: Statewide

SUPPLEMENTAL NUTRITION ASSISTANCE PROGRAM (SNAP)

	October 2024	September 2024	October 2023	Annual Change
Total issuance	\$122,775,640	\$122,563,736	\$123,572,940	-0.65%
Number of households receiving SNAP benefits	290,103	292,940	292,101	-0.68%
Number of recipients	609,551	612,340	612,855	-0.54%
Average issuance per household	\$423.21	\$418.39	\$423.05	0.04%
Average issuance per recipient	\$201.42	\$200.16	\$201.63	-0.11%
Number of Applications	43,271	41,006	46,420	-6.78%



DIVISION OF FAMILY RESOURCES

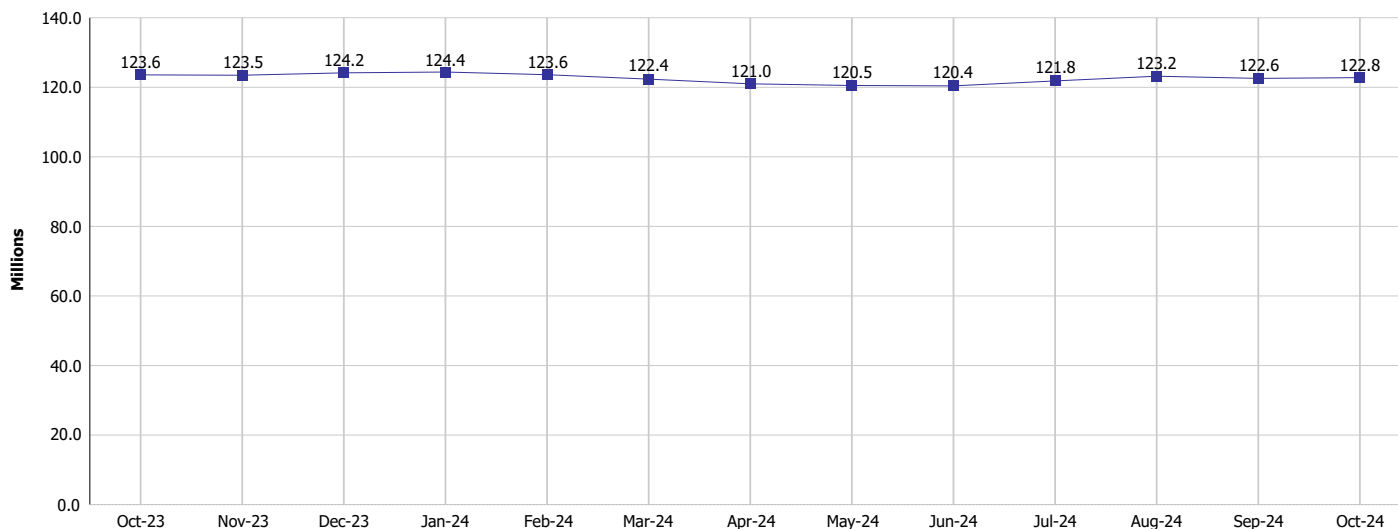
Monthly Management Report

Reporting Month: October 2024

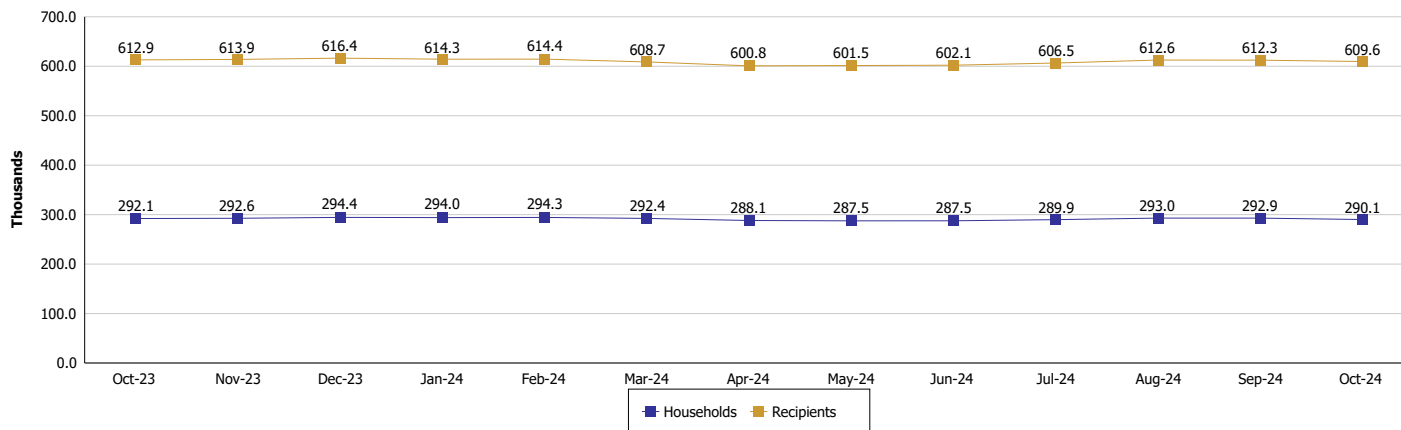
Location: Statewide

SUPPLEMENTAL NUTRITION ASSISTANCE PROGRAM (SNAP)

SNAP Issuance



SNAP Households and Recipients



Note:

Run Date: Nov 12, 2024



DIVISION OF FAMILY RESOURCES

Monthly Management Report

Reporting Month: October 2024

Location: Statewide

HIP 2.0 and SNAP

	October 2024	September 2024	October 2023	Annual Change
Total HIP 2.0 Members	758,837	758,265	796,055	-4.68%
HIP Members also SNAP Recipients	183,442	185,417	184,096	-0.36%
Percentage HIP Members SNAP Recipients	24.2%	24.5%	23.1%	1.05
HIP Members SNAP ABAWDs	8,986	11,090	11,985	-25.02%
Percentage HIP Members SNAP ABAWDs	1.2%	1.5%	1.5%	-0.3

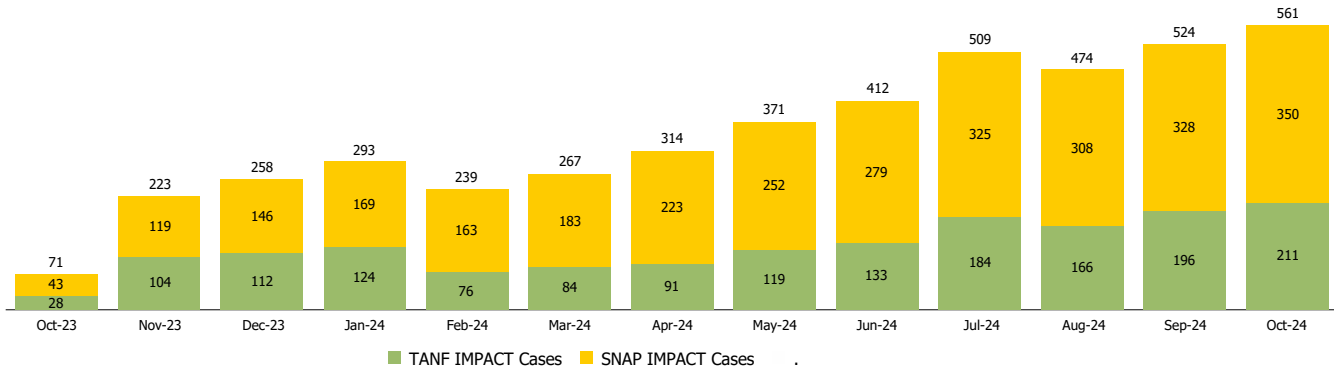
Monthly Management Report

Reporting Month: October 2024 Location: Statewide

INDIANA MANPOWER PLACEMENT AND COMPREHENSIVE TRAINING (IMPACT)

	October 2024	September 2024	October 2023	Annual Change
Number of IMPACT cases	561	524	71	690.14%
Number of TANF IMPACT adults	211	196	28	653.57%
Number of SNAP IMPACT Cases	350	328	43	713.95%
Total number of adults employed	1,520	1,570	1,273	19.40%
Number of TANF IMPACT adults newly employed (within past 30 days)	83	65	25	232.00%
Number of SNAP IMPACT adults employed	1,437	1,505	1,248	15.14%
Total number of adults ineligible due to employment	1,823	1,854	1,411	29.20%
Number of TANF adults ineligible due to employment	86	76	36	138.89%
Number of SNAP adults ineligible due to employment	1,737	1,778	1,375	26.33%

IMPACT Caseloads
(SNAP, TANF, Total Caseload)



Note: Effective January 2022, these numbers have been adjusted to reflect only those actually participating in IMPACT.