



DIVISION OF FAMILY RESOURCES

Vanderburgh County Monthly Management Report May 2024

State of Indiana

Eric Holcomb
Governor

Family and Social Services Administration

Dan Rusyniak, MD
Secretary

Division of Family Resources

Sunshine Beam
Interim Director

For questions regarding data on this report contact:
office.Communications@fssa.IN.gov



State of Indiana

Published June 2024



DIVISION OF FAMILY RESOURCES

Monthly Management Report

Reporting Month: May 2024

Location: Vanderburgh County

TEMPORARY ASSISTANCE FOR NEEDY FAMILIES (TANF)

Child-Only and One-Parent Families	May 2024	April 2024	May 2023	Annual Change
Number of families receiving TANF Grants	174	181	140	24.29%
Total number of grant recipients	366	383	283	29.33%
Number of adult grant recipients	59	60	23	156.52%
Number of child grant recipients	307	323	260	18.08%
Total payments	\$39,532	\$41,563	\$28,206	40.15%
Average payment per case	\$227.20	\$229.63	\$201.47	12.77%
Average payment per recipient	\$108.01	\$108.52	\$99.67	8.37%
Number of cases with benefits reduced to zero	1	0	5	-80.00%
Number of recipients with benefits reduced to zero	1	0	8	-87.50%
Number of adult recipients with benefit reduced to zero	0	0	0	0%
Number of child recipients with benefit reduced to zero	1	0	8	-87.50%

Two-Parent Families	May 2024	April 2024	May 2023	Annual Change
Number of families receiving TANF Grants	41	43	22	86.36%
Total number of grant recipients	150	161	72	108.33%
Number of adult grant recipients	82	86	44	86.36%
Number of child grant recipients	68	75	28	142.86%
Total payments	\$13,473	\$14,866	\$6,724	100.37%
Average payment per case	\$328.61	\$345.72	\$305.64	7.52%
Average payment per recipient	\$89.82	\$92.34	\$93.39	-3.82%
Number of cases with benefits reduced to zero	1	1	0	0%
Number of recipients with benefits reduced to zero	3	3	0	0%
Number of adult recipients with benefit reduced to zero	2	2	0	0%
Number of child recipients with benefit reduced to zero	1	1	0	0%

Note:

For August 2021, a one time payment of \$400 per recipient was included in the Total payments and Average payments. TANF section rules changed to reflect Federal reporting logic effective September 2021. For August 2022, a one-time payment of \$269 per recipient was included in the Total payments and Average payments.

Source:



DIVISION OF FAMILY RESOURCES

Monthly Management Report

Reporting Month: May 2024

Location: Vanderburgh County

TANF - APPLICATIONS

	May 2024	April 2024	May 2023	Annual Change
Number of Applications	382	382	297	28.62%

TANF - RECIPIENTS BY ZIP CODE

ZIP Code	Households	Recipients
47710	20	34
47711	28	65
47712	7	9
47713	37	86
47714	70	188
47715	46	121
47720	6	11
47725	1	2
Total	215	516



DIVISION OF FAMILY RESOURCES

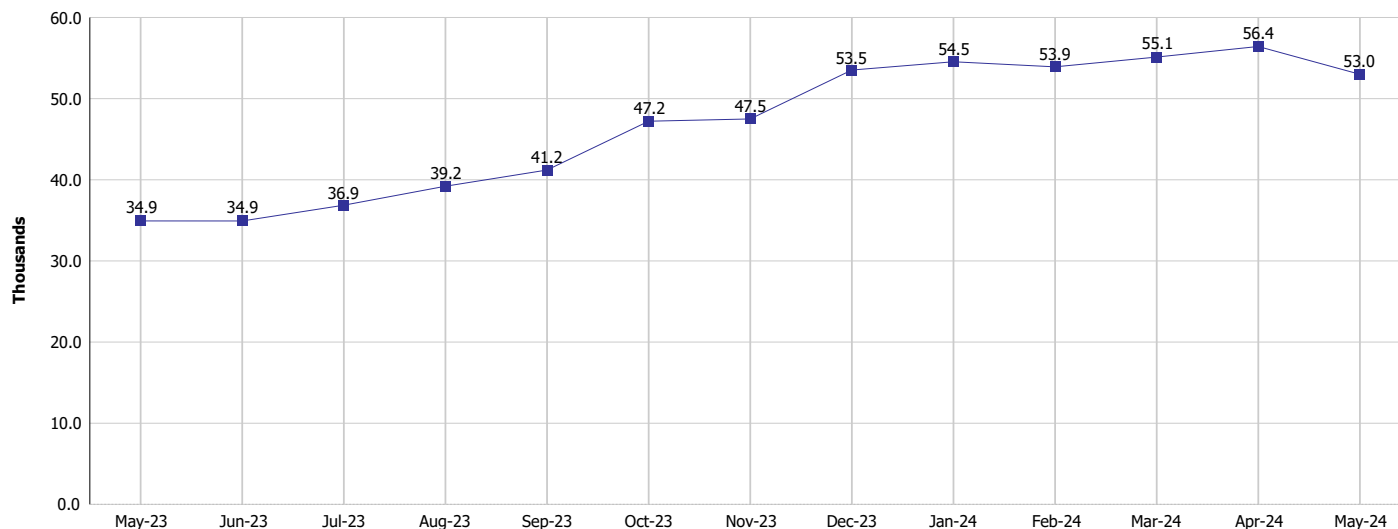
Monthly Management Report

Reporting Month: May 2024

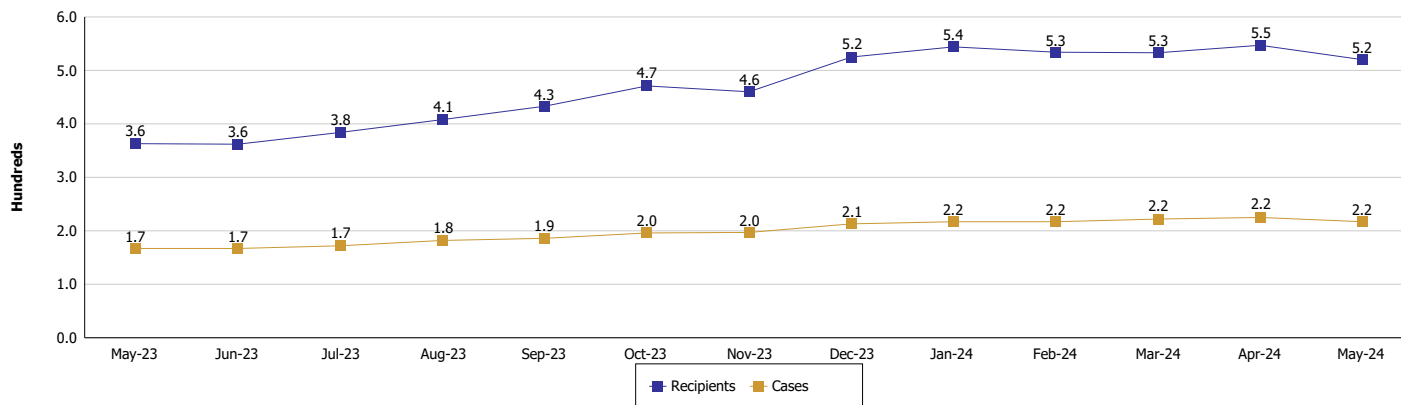
Location: Vanderburgh County

TEMPORARY ASSISTANCE FOR NEEDY FAMILIES (TANF)

TANF Regular And TANF Two-Parent Cash Assistance



TANF Cases and Recipients (TANF Regular and TANF Two-Parent)



Note:

For August 2021, a one time payment of \$400 per recipient was included in the Total payments and Average payments. TANF section rules changed to reflect Federal reporting logic effective September 2021. For August 2022, a one-time payment of \$269 per recipient was included in the Total payments and Average payments.



DIVISION OF FAMILY RESOURCES

Monthly Management Report

Reporting Month: May 2024

Location: Vanderburgh County

SUPPLEMENTAL NUTRITION ASSISTANCE PROGRAM (SNAP)

	May 2024	April 2024	May 2023	Annual Change
Total issuance	\$4,060,443	\$3,994,296	\$3,675,332	10.48%
Number of households receiving SNAP benefits	10,148	10,051	9,645	5.22%
Number of recipients	19,773	19,509	18,860	4.84%
Average issuance per household	\$400.12	\$397.4	\$381.06	5%
Average issuance per recipient	\$205.35	\$204.74	\$194.87	5.38%
Number of Applications	1,803	1,847	1,696	6.31%



DIVISION OF FAMILY RESOURCES

Monthly Management Report

Reporting Month: May 2024

Location: Vanderburgh County

SNAP - RECIPIENTS BY ZIP CODE

ZIP Code	Households	Recipients
46160	1	1
46202	1	1
46224	1	3
46228	1	3
46229	1	2
46253	1	3
46938	1	1
47112	1	1
47303	1	2
47523	1	1
47546	1	1
47586	1	1
47591	2	3
47601	4	6
47610	2	4
47620	1	1
47630	10	19
47635	1	1
47637	1	1
47638	1	1
47639	1	1
47660	1	2
47708	118	147
47710	1,737	3,266
47711	1,519	2,991
47712	601	1,279
47713	1,840	3,360
47714	2,377	4,834
47715	1,411	2,814
47719	3	3
47720	386	796
47722	2	2
47724	1	1
47725	99	196
47728	2	2
47804	2	2
47904	1	1
47922	1	1
None	12	19
Totals	10,148	19,773



DIVISION OF FAMILY RESOURCES

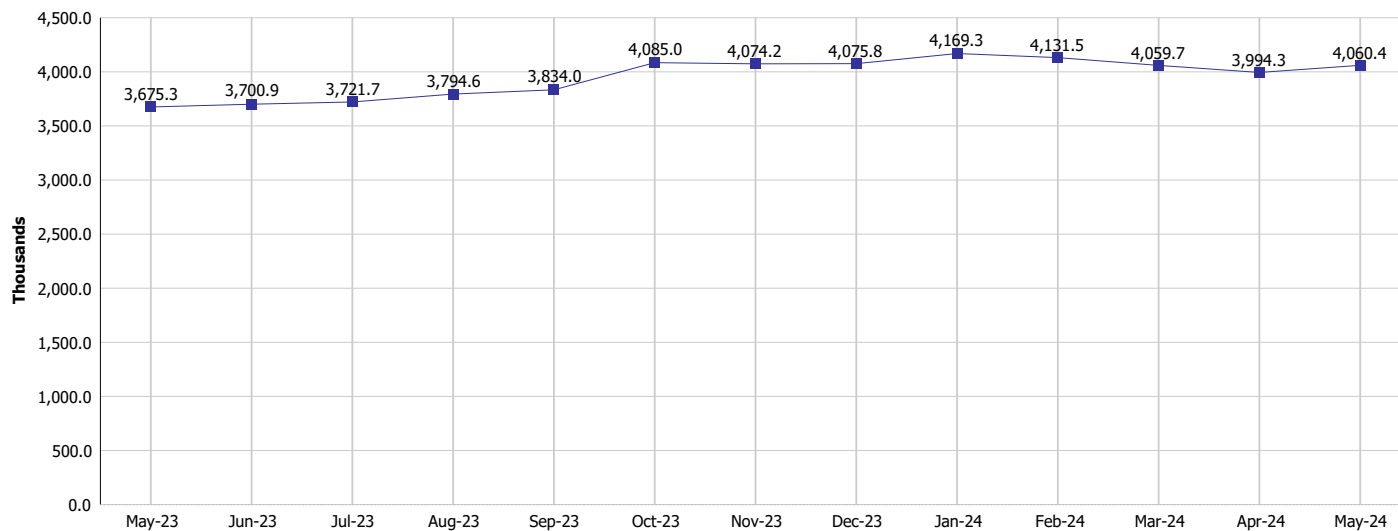
Monthly Management Report

Reporting Month: May 2024

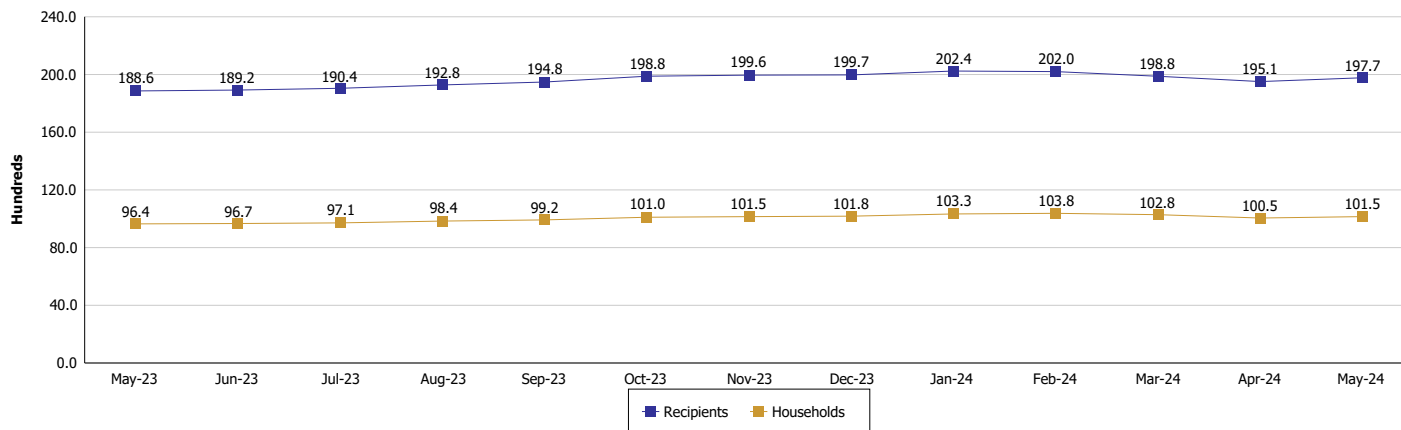
Location: Vanderburgh County

SUPPLEMENTAL NUTRITION ASSISTANCE PROGRAM (SNAP)

SNAP Issuance



SNAP Households and Recipients



Note:

Run Date: Jun 12, 2024



DIVISION OF FAMILY RESOURCES

Monthly Management Report

Reporting Month: May 2024

Location: Vanderburgh County

HIP 2.0 and SNAP

	May 2024	April 2024	May 2023	Annual Change
Total HIP 2.0 Members	22,630	22,689	26,024	-13.04%
HIP Members also SNAP Recipients	6,286	6,234	6,062	3.70%
Percentage HIP Members SNAP Recipients	27.8%	27.5%	23.3%	4.48
HIP Members SNAP ABAWDs	372	414	489	-23.93%
Percentage HIP Members SNAP ABAWDs	1.6%	1.8%	1.9%	-0.2

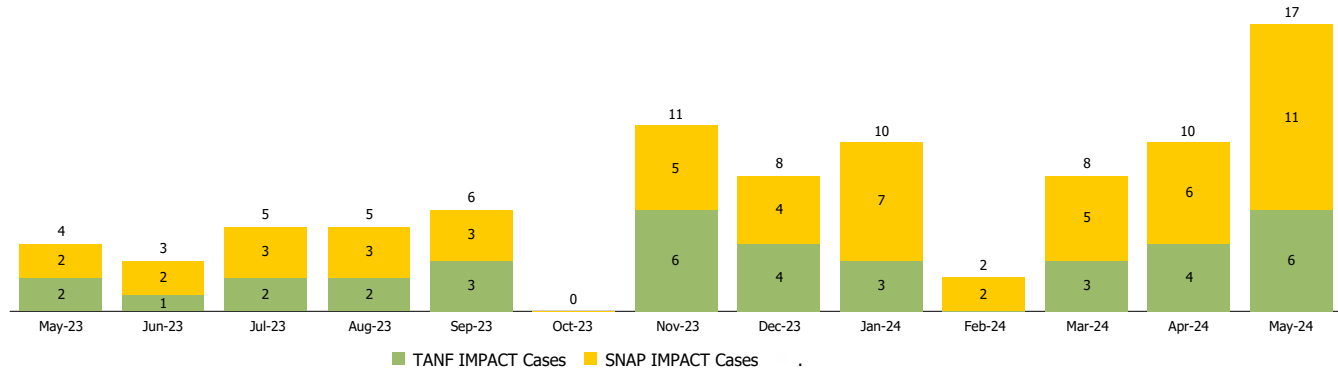
Monthly Management Report

Reporting Month: May 2024 Location: Vanderburgh County

INDIANA MANPOWER PLACEMENT AND COMPREHENSIVE TRAINING (IMPACT)

	May 2024	April 2024	May 2023	Annual Change
Number of IMPACT cases	17	10	4	325.00%
Number of TANF IMPACT adults	6	4	2	200.00%
Number of SNAP IMPACT Cases	11	6	2	450.00%
Total number of adults employed	50	57	105	-52.38%
Number of TANF IMPACT adults newly employed (within past 30 days)	0	2	1	-100.00%
Number of SNAP IMPACT adults employed	50	55	104	-51.92%
Total number of adults ineligible due to employment	54	56	72	-25.00%
Number of TANF adults ineligible due to employment	4	3	0	
Number of SNAP adults ineligible due to employment	50	53	72	-30.56%

IMPACT Caseloads
(SNAP, TANF, Total Caseload)



Note: Effective January 2022, these numbers have been adjusted to reflect only those actually participating in IMPACT.