



DIVISION OF FAMILY RESOURCES

Vigo County Monthly Management Report May 2024

State of Indiana

Eric Holcomb
Governor

Family and Social Services Administration

Dan Rusyniak, MD
Secretary

Division of Family Resources

Sunshine Beam
Interim Director

For questions regarding data on this report contact:
office.Communications@fssa.IN.gov



State of Indiana

Published June 2024



DIVISION OF FAMILY RESOURCES

Monthly Management Report

Reporting Month: May 2024

Location: Vigo County

TEMPORARY ASSISTANCE FOR NEEDY FAMILIES (TANF)

Child-Only and One-Parent Families	May 2024	April 2024	May 2023	Annual Change
Number of families receiving TANF Grants	93	90	85	9.41%
Total number of grant recipients	207	205	159	30.19%
Number of adult grant recipients	26	23	14	85.71%
Number of child grant recipients	181	182	145	24.83%
Total payments	\$21,773	\$21,137	\$16,348	33.18%
Average payment per case	\$234.12	\$234.86	\$192.33	21.73%
Average payment per recipient	\$105.18	\$103.11	\$102.82	2.30%
Number of cases with benefits reduced to zero	2	1	1	100.00%
Number of recipients with benefits reduced to zero	3	1	2	50.00%
Number of adult recipients with benefit reduced to zero	0	0	1	-100.00%
Number of child recipients with benefit reduced to zero	3	1	1	200.00%

Two-Parent Families	May 2024	April 2024	May 2023	Annual Change
Number of families receiving TANF Grants	0	0	2	-100.00%
Total number of grant recipients	0	0	11	-100.00%
Number of adult grant recipients	0	0	4	-100.00%
Number of child grant recipients	0	0	7	-100.00%
Total payments	\$0	\$0	\$415	-100.00%
Average payment per case	\$0.00	\$0.00	\$207.50	-100.00%
Average payment per recipient	\$0.00	\$0.00	\$37.73	-100.00%
Number of cases with benefits reduced to zero	0	0	0	0%
Number of recipients with benefits reduced to zero	0	0	0	0%
Number of adult recipients with benefit reduced to zero	0	0	0	0%
Number of child recipients with benefit reduced to zero	0	0	0	0%

Note:

For August 2021, a one time payment of \$400 per recipient was included in the Total payments and Average payments. TANF section rules changed to reflect Federal reporting logic effective September 2021. For August 2022, a one-time payment of \$269 per recipient was included in the Total payments and Average payments.

Source:



DIVISION OF FAMILY RESOURCES

Monthly Management Report

Reporting Month: May 2024

Location: Vigo County

TANF - APPLICATIONS

	May 2024	April 2024	May 2023	Annual Change
Number of Applications	99	117	122	-18.85%

TANF - RECIPIENTS BY ZIP CODE

ZIP Code	Households	Recipients
47802	28	65
47803	14	31
47804	9	17
47805	8	16
47807	30	69
47869	1	2
47885	3	7
Total	93	207



DIVISION OF FAMILY RESOURCES

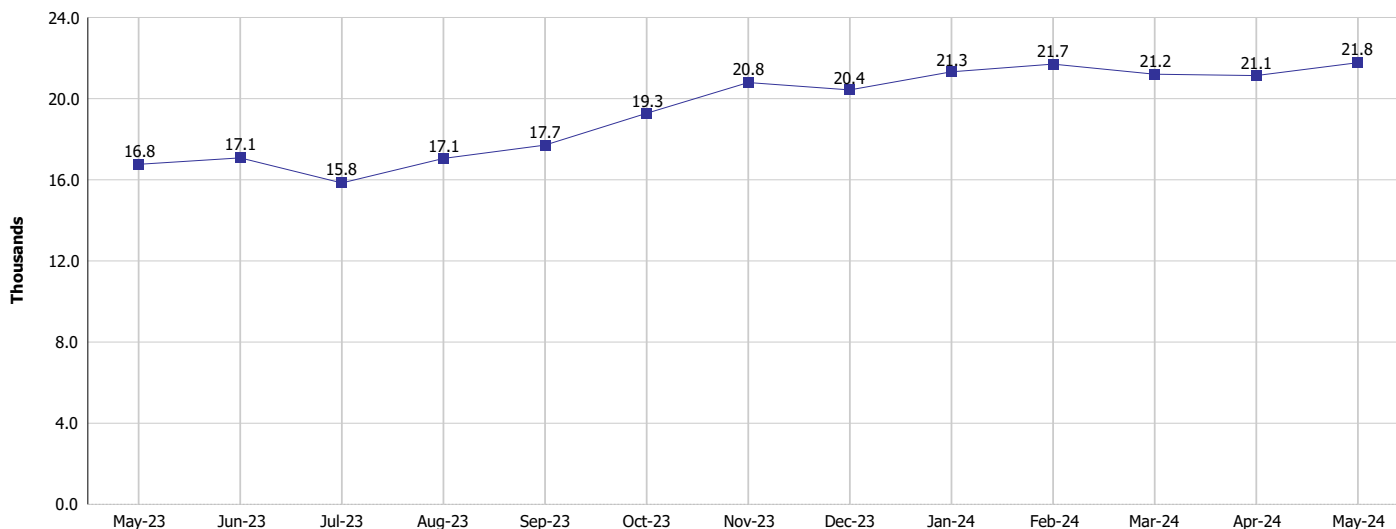
Monthly Management Report

Reporting Month: May 2024

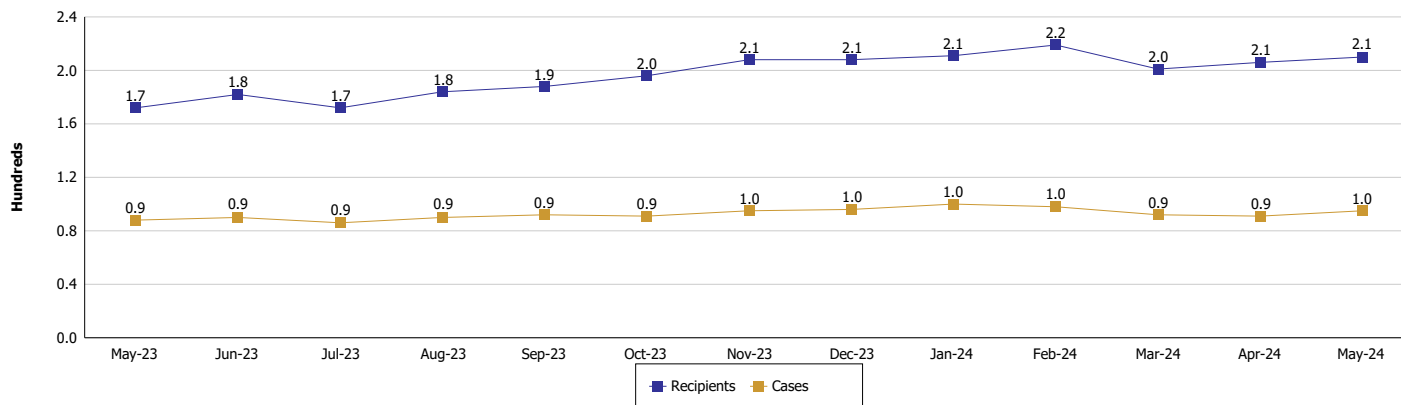
Location: Vigo County

TEMPORARY ASSISTANCE FOR NEEDY FAMILIES (TANF)

TANF Regular And TANF Two-Parent Cash Assistance



TANF Cases and Recipients (TANF Regular and TANF Two-Parent)



Note:

For August 2021, a one time payment of \$400 per recipient was included in the Total payments and Average payments. TANF section rules changed to reflect Federal reporting logic effective September 2021.

For August 2022, a one-time payment of \$269 per recipient was included in the Total payments and Average payments.



DIVISION OF FAMILY RESOURCES

Monthly Management Report

Reporting Month: May 2024

Location: Vigo County

SUPPLEMENTAL NUTRITION ASSISTANCE PROGRAM (SNAP)

	May 2024	April 2024	May 2023	Annual Change
Total issuance	\$2,654,343	\$2,626,521	\$2,514,510	5.56%
Number of households receiving SNAP benefits	6,578	6,545	6,574	0.06%
Number of recipients	13,482	13,365	13,486	-0.03%
Average issuance per household	\$403.52	\$401.3	\$382.49	5.5%
Average issuance per recipient	\$196.88	\$196.52	\$186.45	5.59%
Number of Applications	785	817	893	-12.09%



DIVISION OF FAMILY RESOURCES

Monthly Management Report

Reporting Month: May 2024 Location: Vigo County

SNAP - RECIPIENTS BY ZIP CODE

ZIP Code	Households	Recipients	ZIP Code	Households	Recipients
46135	3	8	47880	2	3
46166	1	1	47882	2	3
46168	1	1	47885	505	1,063
46208	1	1	47904	1	1
46218	1	4	47932	1	1
46220	1	1	47952	1	1
46235	1	1	None	2	2
46250	1	1	Totals	6,578	13,482
46268	1	1			
46393	1	1			
46407	1	1			
46408	1	3			
46580	1	1			
46750	1	1			
46806	1	1			
46975	1	1			
47150	1	1			
47172	1	1			
47374	1	3			
47402	1	1			
47441	1	1			
47460	1	5			
47591	1	1			
47620	1	1			
47801	1	1			
47802	1,803	3,808			
47803	863	1,745			
47804	1,184	2,299			
47805	489	1,070			
47807	1,556	3,180			
47809	2	4			
47832	1	1			
47834	17	32			
47842	3	8			
47850	7	17			
47851	6	13			
47858	13	30			
47860	1	1			
47863	5	5			
47866	12	21			
47869	15	42			
47870	3	5			
47871	8	14			
47874	22	36			
47876	19	20			
47878	8	14			



DIVISION OF FAMILY RESOURCES

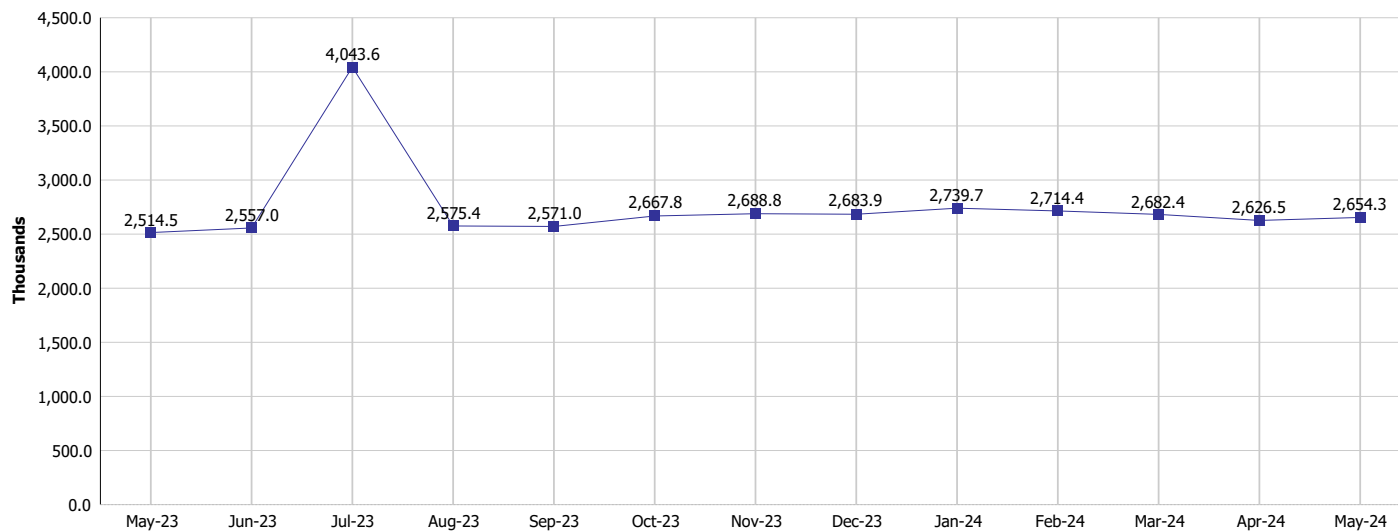
Monthly Management Report

Reporting Month: May 2024

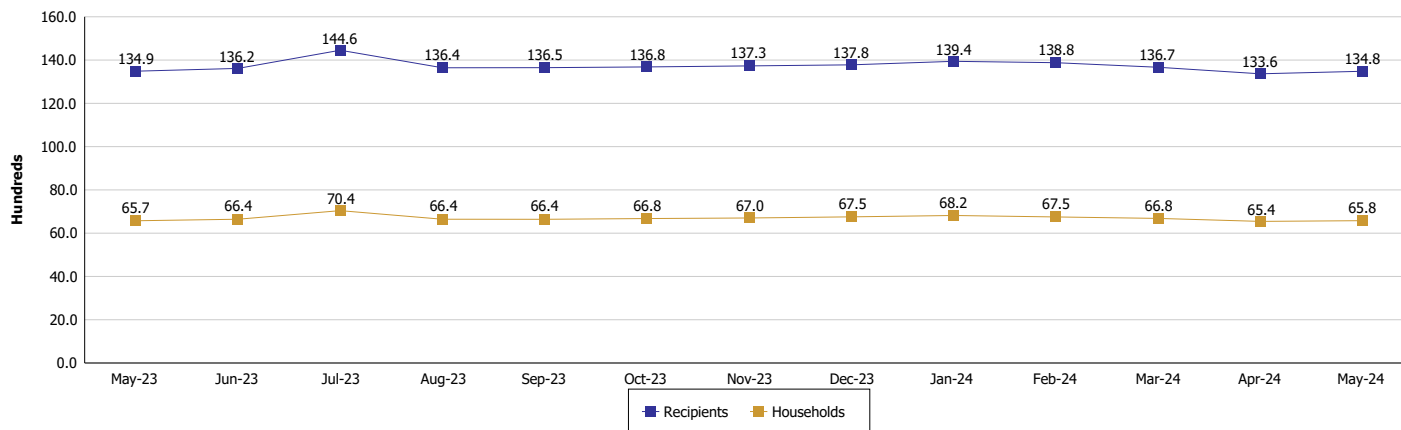
Location: Vigo County

SUPPLEMENTAL NUTRITION ASSISTANCE PROGRAM (SNAP)

SNAP Issuance



SNAP Households and Recipients



Note:

Run Date: Jun 12, 2024



DIVISION OF FAMILY RESOURCES

Monthly Management Report

Reporting Month: May 2024

Location: Vigo County

HIP 2.0 and SNAP

	May 2024	April 2024	May 2023	Annual Change
Total HIP 2.0 Members	15,036	15,114	16,996	-11.53%
HIP Members also SNAP Recipients	4,445	4,386	4,450	-0.11%
Percentage HIP Members SNAP Recipients	29.6%	29.0%	26.2%	3.38
HIP Members SNAP ABAWDs	186	203	286	-34.97%
Percentage HIP Members SNAP ABAWDs	1.2%	1.3%	1.7%	-0.4



DIVISION OF FAMILY RESOURCES

Monthly Management Report

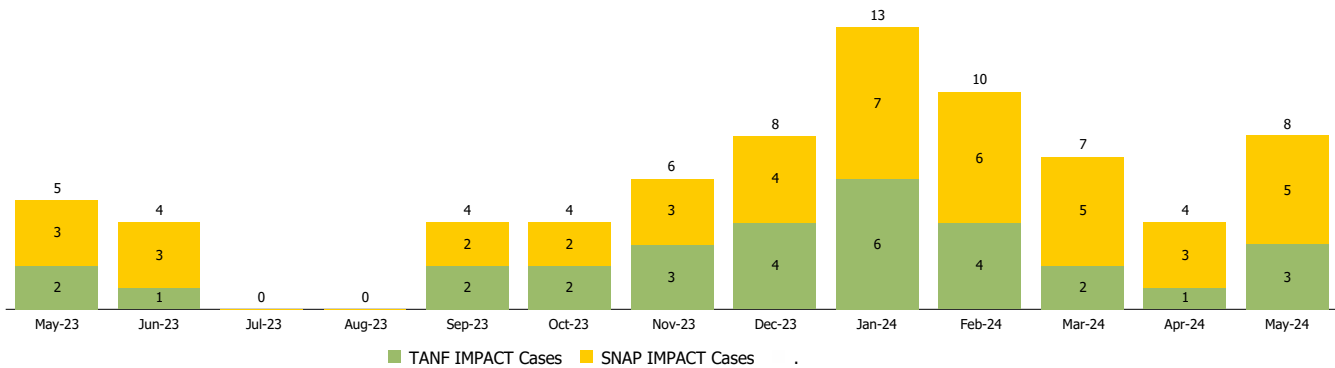
Reporting Month: May 2024

Location: Vigo County

INDIANA MANPOWER PLACEMENT AND COMPREHENSIVE TRAINING (IMPACT)

	May 2024	April 2024	May 2023	Annual Change
Number of IMPACT cases	8	4	5	60.00%
Number of TANF IMPACT adults	3	1	2	50.00%
Number of SNAP IMPACT Cases	5	3	3	66.67%
Total number of adults employed	48	30	40	20.00%
Number of TANF IMPACT adults newly employed (within past 30 days)	1	0	0	
Number of SNAP IMPACT adults employed	47	30	40	17.50%
Total number of adults ineligible due to employment	30	34	45	-33.33%
Number of TANF adults ineligible due to employment	0	0	0	
Number of SNAP adults ineligible due to employment	30	34	45	-33.33%

IMPACT Caseloads
(SNAP, TANF, Total Caseload)



Note:

Effective January 2022, these numbers have been adjusted to reflect only those actually participating in IMPACT.