



# Indiana Pregnancy Promise Program

Promoting Recovery from Opioid use:  
Maternal Infant Support and Engagement

2024

## ANNUAL REPORT

### Background

The Indiana Pregnancy Promise Program aims to **reduce and prevent the negative impacts** of opioid use disorder by providing **enhanced case management** and **care coordination services** to pregnant individuals and their infants impacted by opioid use disorder. The following annual report highlights the program's findings from **July 1, 2021 – June 30, 2024**. In 2025, the program is expanding to encompass all substance use disorders.



Our program infants are smiling about these results!

### Participants at a Glance



**757 Infants**

Born through June 30, 2024



**275 Mothers**

Enrolled in Year 1



**268 Mothers**

Enrolled in Year 2



**359 Mothers**

Enrolled in Year 3

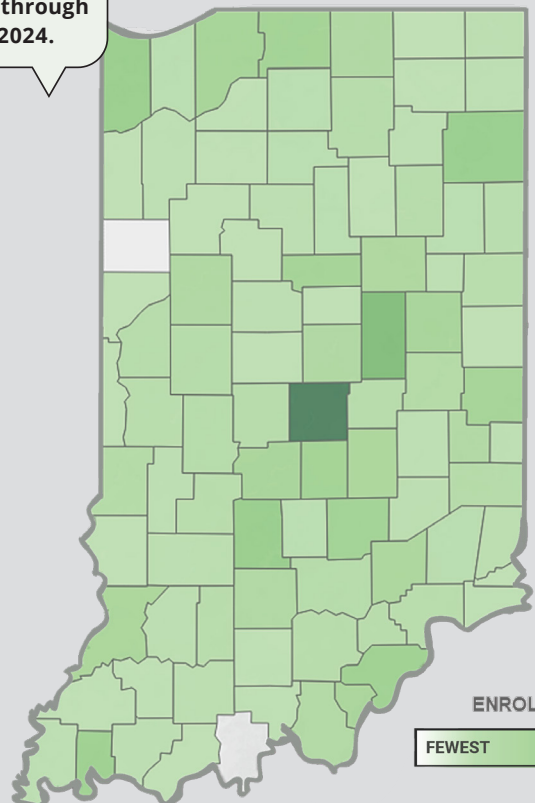
More than **900** mothers served across **90** counties through June 30, 2024.

### Participant Success Story

"I felt like my Pregnancy Promise case manager could find anything I might need support-wise and she had answers to all of my questions about medical care and even **just listened** when I needed to talk, which is so much **more important than people realize.**"



Our moms and babies love skin-to-skin "kangaroo care"!





# Indiana Pregnancy Promise Program

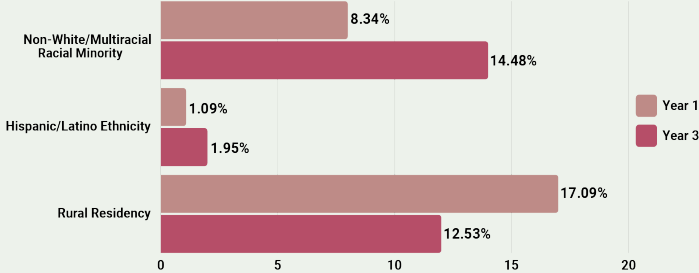
Promoting Recovery from Opioid use:  
Maternal Infant Support and Engagement

2024

## ANNUAL REPORT

### Enrollee Demographics

#### Year over Year Snapshot



### Case Manager Testimony

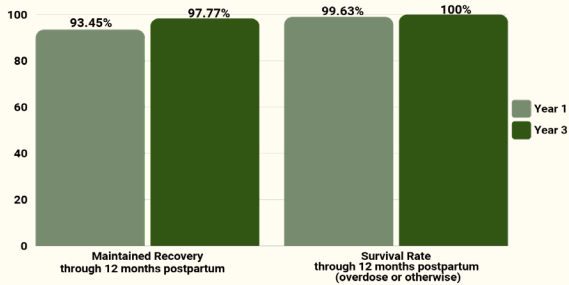


“As a Nurse Case Manager, I have the privilege of witnessing mothers **transform their lives...** Every person and their journey are etched in my heart and mind. They are my driving force, and their resilience fuels my unwavering commitment to advocating for **compassionate and equitable health care.**”

## Key Aspects of the Indiana Pregnancy Promise Program Aim To:

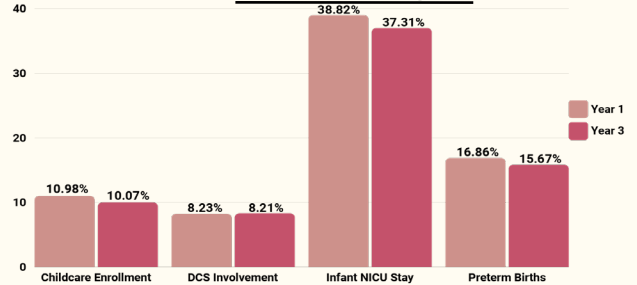
### Connect Mothers to Treatment and Recovery Services

#### Care Received Year over Year Growth



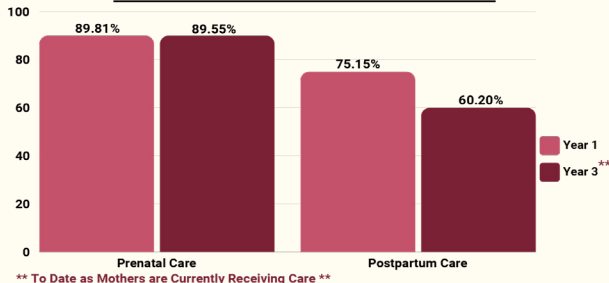
### Set a Strong Foundation for the Infant's Future

#### Year over Year Snapshot



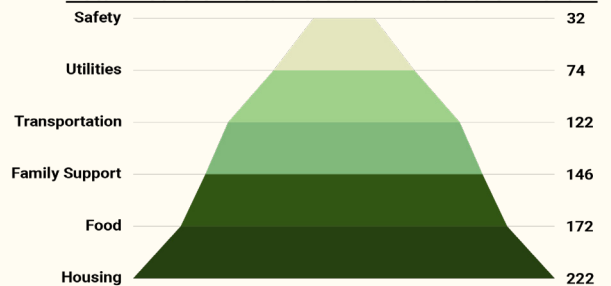
### Connect Mothers to Prenatal and Postpartum Care

#### Care Received Year over Year Growth



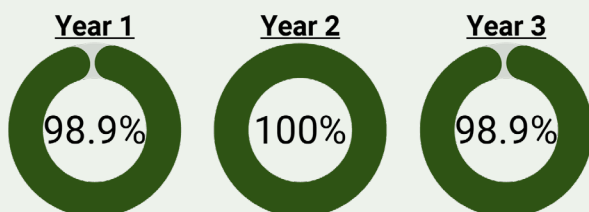
### Connect to Resources for Unmet Health-Related Social Needs

#### Total Mothers with a Referral Made on their Behalf



### Address Mental and Behavioral Health Concerns

#### Percent screened for mental/behavioral conditions



**Why does this matter?** Untreated mental health conditions are a key contributing factor to substance use disorders.

### Provider Education and Stigma Reduction

Attendances logged by professionals in health care roles participating in **Project ECHO (Extension for Community Healthcare Outcomes)** virtual training sessions to:



- Actively understand substance use disorder during pregnancy
- Reduce associated stigma
- Promote compassionate care

<https://echo.iu.edu/>