



Anatoxin-A ELISA Summary Report

Office of Water Quality - Watershed Assessment and Planning Branch

Sample #	Location	Date Collected	Date Analyzed	Conc. (ppb)
AB26653	Mississinewa Miami SRA	8/29/2016	8/31/2016	0.266
AB26654	Potato Creek SP	8/29/2016	8/31/2016	< 0.15
AB26655	Pokagon SP	8/30/2016	8/31/2016	< 0.15
AB26656	Southern Basin Inn's Beach	8/30/2016	8/31/2016	0.176
AB26657	Chain O'Lakes SP	8/30/2016	8/31/2016	0.287
AB26658	Lost Bridge West SRA	8/30/2016	8/31/2016	0.426
AB26659	Mississinewa (Field Duplicate)	8/29/2016	8/31/2016	< 0.15
AB26660	Field Blank	8/29/2016	8/31/2016	< 0.15
AB26700	Ferdinand SP	8/29/2016	8/31/2016	< 0.15
AB26700LD	Ferdinand (Lab Duplicate)	8/29/2016	8/31/2016	< 0.15
AB26701	Lincoln SP	8/29/2016	8/31/2016	< 0.15
20160830LB	Lab Blank	8/30/2016	8/31/2016	< 0.15



Assay Calibration Report

Assay Information

Assay Name: Anatoxin a ELISA (2 rep) Units: ng/mL
Assay Mode: 4-Parameter Logistic # of decimals: 3
Normal: 0.150 - 5.000 Assay Description: ELISA

Controls:

Normal Control

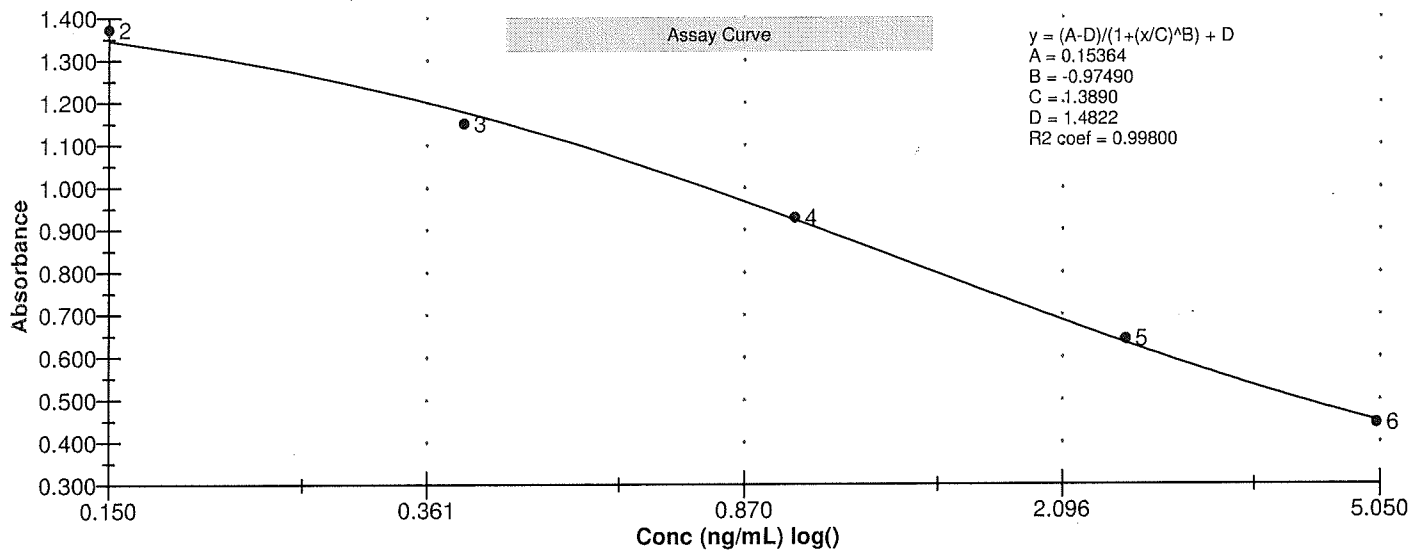
Standards:

Std1, Concentration = 0.000, Minimum number to use: 2
Std2, Concentration = 0.150, Minimum number to use: 2
Std3, Concentration = 0.400, Minimum number to use: 2
Std4, Concentration = 1.000, Minimum number to use: 2
Std5, Concentration = 2.500, Minimum number to use: 2
Std6, Concentration = 5.000, Minimum number to use: 2
Curve valid interval: 7 days 0 hours
Axis Mode: Y = Abs, X = Log(Conc)

Assay Calibration and Statistics

Name	Absorbance	Concentration	Position
8/31/2016 12:31:46 PM			
Std1	1.514 Abs	< 0.000 ng/mL	A01
Std1	1.435 Abs	0.047 ng/mL	B01
Std2	1.373 Abs	0.117 ng/mL	C01
Std3	1.074 Abs	0.604 ng/mL	E01
Std3	1.228 Abs	0.317 ng/mL	F01
Std4	0.928 Abs	0.985 ng/mL	G01
Std5	0.632 Abs	2.505 ng/mL	A02
Std5	0.652 Abs	2.345 ng/mL	B02
Std6	0.443 Abs	> 5.000 ng/mL	C02
Std6	0.446 Abs	> 5.000 ng/mL	D02
8/31/2016 12:31:46 PM			
Normal Control	1.013 Abs	0.747 ng/mL	F02
Normal Control	0.891 Abs	1.107 ng/mL	E02

Name	Mean Abs	SD Abs	CV Abs	Mean Conc	SD Conc	CV Conc	Diff Conc
Std1	1.474	0.056	3.79				
Std2	1.373			0.117			-22.00
Std3	1.151	0.109	9.46	0.461	0.203	44.07	15.25
Std4	0.928			0.985			-1.50
Std5	0.642	0.014	2.20	2.425	0.113	4.67	-3.00
Std6	0.444	0.002	0.48				-100.00
Normal Control	0.952	0.086	9.06	0.927	0.255	27.46	





Test Report

Test Information

Name/ID	Assay	Absorbance	Concentration	Interpretation	Reference	Position
8/31/2016 12:31:46 PM						
Std1	Anatoxin a ELISA (2 rep)	1.514 Abs	< 0.000 ng/mL		0.000	A01
Std1	Anatoxin a ELISA (2 rep)	1.435 Abs	0.043 ng/mL		0.000	B01
Std2	Anatoxin a ELISA (2 rep)	1.373 Abs	0.119 ng/mL		0.150	C01
Std2	Anatoxin a ELISA (2 rep)	1.388 Abs	0.100 ng/mL		0.150	D01
Std3	Anatoxin a ELISA (2 rep)	1.074 Abs	0.689 ng/mL		0.400	E01
Std3	Anatoxin a ELISA (2 rep)	1.228 Abs	0.351 ng/mL		0.400	F01
Std4	Anatoxin a ELISA (2 rep)	0.928 Abs	1.133 ng/mL		1.000	G01
Std4	Anatoxin a ELISA (2 rep)	1.088 Abs	0.654 ng/mL		1.000	H01
Std5	Anatoxin a ELISA (2 rep)	0.632 Abs	2.734 ng/mL		2.500	A02
Std5	Anatoxin a ELISA (2 rep)	0.652 Abs	2.578 ng/mL		2.500	B02
Std6	Anatoxin a ELISA (2 rep)	0.443 Abs	4.920 ng/mL		5.000	C02
Std6	Anatoxin a ELISA (2 rep)	0.446 Abs	4.870 ng/mL		5.000	D02
Normal Control	Anatoxin a ELISA (2 rep)	0.891 Abs	1.107 ng/mL			E02
Normal Control	Anatoxin a ELISA (2 rep)	1.013 Abs	0.747 ng/mL			F02
AB26653	Anatoxin a ELISA (2 rep)	1.258 Abs	0.271 ng/mL		0.150 - 5.000	G02
AB26653	Anatoxin a ELISA (2 rep)	1.264 Abs [1.2610] {0.3 CV}	0.262 ng/mL [0.266] {2.4 CV}		0.150 - 5.000	H02
AB26654	Anatoxin a ELISA (2 rep)	1.340 Abs	0.158 ng/mL		0.150 - 5.000	A03
AB26654	Anatoxin a ELISA (2 rep)	1.441 Abs [1.3905] {5.1 CV}	0.041 ng/mL [0.096] {83.1 CV}	Low [Low]	0.150 - 5.000	B03
AB26659	Anatoxin a ELISA (2 rep)	1.446 Abs	0.036 ng/mL	LOW	0.150 - 5.000	C03
AB26659	Anatoxin a ELISA (2 rep)	1.372 Abs [1.4090] {3.7 CV}	0.118 ng/mL [0.075] {75.3 CV}	Low [Low]	0.150 - 5.000	D03
AB26660	Anatoxin a ELISA (2 rep)	1.553 Abs	< 0.000 ng/mL	Out(LR)	0.150 - 5.000	E03
AB26660	Anatoxin a ELISA (2 rep)	1.615 Abs [1.5840] {2.8 CV}	< 0.000 ng/mL [< 0.000]	Out(LR) [Out(LR)]	0.150 - 5.000	F03
AB26700	Anatoxin a ELISA (2 rep)	1.610 Abs	< 0.000 ng/mL	Out(LR)	0.150 - 5.000	G03
AB26700	Anatoxin a ELISA (2 rep)	1.664 Abs [1.6370] {2.3 CV}	< 0.000 ng/mL [< 0.000]	Out(LR) [Out(LR)]	0.150 - 5.000	H03
AB26700LD	Anatoxin a ELISA (2 rep)	1.377 Abs	0.112 ng/mL	LOW	0.150 - 5.000	A04
AB26700LD	Anatoxin a ELISA (2 rep)	1.400 Abs [1.3885] {1.2 CV}	0.086 ng/mL [0.099] {18.6 CV}	Low [Low]	0.150 - 5.000	B04
AB26701	Anatoxin a ELISA (2 rep)	1.474 Abs	0.007 ng/mL	LOW	0.150 - 5.000	C04
AB26701	Anatoxin a ELISA (2 rep)	1.428 Abs [1.4510] {2.2 CV}	0.054 ng/mL [0.030] {109.0 CV}	Low [Low]	0.150 - 5.000	D04
20160830LB	Anatoxin a ELISA (2 rep)	1.472 Abs	0.009 ng/mL	LOW	0.150 - 5.000	E04
20160830LB	Anatoxin a ELISA (2 rep)	1.535 Abs [1.5035] {3.0 CV}	< 0.000 ng/mL [< 0.000]	Out(LR) [Out(LR)]	0.150 - 5.000	F04
AB26655	Anatoxin a ELISA (2 rep)	1.437 Abs	0.045 ng/mL	LOW	0.150 - 5.000	G04
AB26655	Anatoxin a ELISA (2 rep)	1.642 Abs [1.5395] {9.4 CV}	< 0.000 ng/mL [< 0.000]	Out(LR) [Out(LR)]	0.150 - 5.000	H04
AB26656	Anatoxin a ELISA (2 rep)	1.328 Abs	0.173 ng/mL		0.150 - 5.000	A05
AB26656	Anatoxin a ELISA (2 rep)	1.324 Abs [1.3260] {0.2 CV}	0.178 ng/mL [0.176] {2.0 CV}		0.150 - 5.000	B05
AB26657	Anatoxin a ELISA (2 rep)	1.232 Abs	0.310 ng/mL		0.150 - 5.000	C05
AB26657	Anatoxin a ELISA (2 rep)	1.262 Abs [1.2470] {1.7 CV}	0.265 ng/mL [0.287] {11.1 CV}		0.150 - 5.000	D05
AB26658	Anatoxin a ELISA (2 rep)	1.135 Abs	0.479 ng/mL		0.150 - 5.000	E05
AB26658	Anatoxin a ELISA (2 rep)	1.192 Abs [1.1635] {3.5 CV}	0.375 ng/mL [0.426] {17.2 CV}		0.150 - 5.000	F05

The data in this report is preliminary without a quality control report. This data is not warranted for accuracy or other purposes.

David Jordan
Laboratory Analyst Signature

8/31/2016
Date