



Cylindrospermopsin 1X ELISA Summary Report

Office of Water Quality - Watershed Assessment and Planning Branch

Sample #	Location	Date Collected	Date Analyzed	Conc. (ppb)
AB09101	Field Blank	7/24/2012	7/25/2012	< 0.050
20120724LB	Lab Blank	7/24/2012	7/25/2012	< 0.050
AB09538	Salamonie Res	7/19/2012	7/25/2012	< 0.050
AB09538LD	Salamonie Res LD	7/19/2012	7/25/2012	< 0.050
AB09125	Whitewater	7/17/2012	7/25/2012	< 0.050
AB09098	Lake James	7/23/2012	7/25/2012	< 0.050
AB09096	Salamonie (Lost Bridge)	7/23/2012	7/25/2012	< 0.050
AB09102	Salamonie (Lost Bridge) Field Dup	7/23/2012	7/25/2012	< 0.050
AB09097	Sand Lake	7/23/2012	7/25/2012	< 0.050
AB09539	Long Lake	7/23/2012	7/25/2012	< 0.050
AB09099	Mississinewa	7/24/2012	7/25/2012	< 0.050
AB09100	Worster Lake	7/24/2012	7/25/2012	< 0.050



Assay Calibration Report

Assay Information

Assay Name: Cylindrospermopsin 1X Units: ng/mL
 Assay Mode: 4-Parameter Logistic # of decimals: 3
 Normal: 0.050 - 2.000 Assay Description:

Controls:

Normal Control

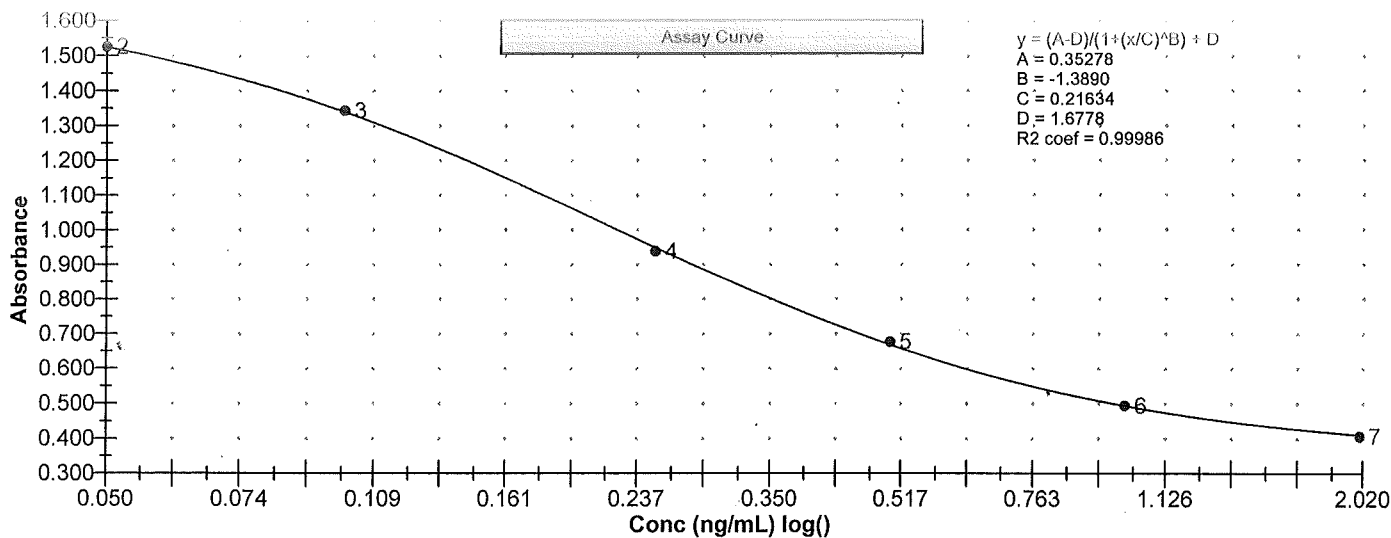
Standards:

Std1, Concentration = 0.000, Minimum number to use: 2
 Std2, Concentration = 0.050, Minimum number to use: 2
 Std3, Concentration = 0.100, Minimum number to use: 2
 Std4, Concentration = 0.250, Minimum number to use: 2
 Std5, Concentration = 0.500, Minimum number to use: 2
 Std6, Concentration = 1.000, Minimum number to use: 2
 Std7, Concentration = 2.000, Minimum number to use: 2
 Curve valid interval: 7 days 0 hours
 Axis Mode: Y = Abs, X = Log(Conc)

Assay Calibration and Statistics

Name	Absorbance	Concentration	Position
7/25/2012 3:43:12 PM			
Std1	1.672 Abs	0.004 ng/mL	A01
Std1	1.679 Abs	< 0.000 ng/mL	B01
Std2	1.481 Abs	0.062 ng/mL	C01
Std2	1.572 Abs	0.037 ng/mL	D01
Std3	1.317 Abs	0.107 ng/mL	E01
Std3	1.371 Abs	0.091 ng/mL	F01
Std4	0.916 Abs	0.269 ng/mL	G01
Std4	0.961 Abs	0.244 ng/mL	H01
Std5	0.679 Abs	0.484 ng/mL	A02
Std5	0.675 Abs	0.490 ng/mL	B02
Std6	0.478 Abs	1.100 ng/mL	C02
Std6	0.512 Abs	0.907 ng/mL	D02
Std7	0.405 Abs	> 2.000 ng/mL	E02
Std7	0.410 Abs	> 2.000 ng/mL	F02
7/25/2012 3:43:12 PM			
Normal Control	0.585 Abs	0.660 ng/mL	G02
Normal Control	0.592 Abs	0.643 ng/mL	H02

Name	Mean Abs	SD Abs	CV Abs	Mean Conc	SD Conc	CV Conc	Diff Conc
Std1	1.676	0.005	0.30				
Std2	1.526	0.064	4.22	0.049	0.018	35.71	-2.00
Std3	1.344	0.038	2.84	0.099	0.011	11.43	-1.00
Std4	0.939	0.032	3.39	0.257	0.018	6.89	2.80
Std5	0.677	0.003	0.42	0.487	0.004	0.87	-2.60
Std6	0.495	0.024	4.86	1.003	0.136	13.60	0.30
Std7	0.407	0.004	0.87				-100.00





Assay Calibration Report

Assay Information

Assay Name: Cylindrospermopsin 1X Units: ng/mL
Assay Mode: 4-Parameter Logistic # of decimals: 3
Normal: 0.050 - 2.000 Assay Description:

Controls:
Normal Control

Standards:

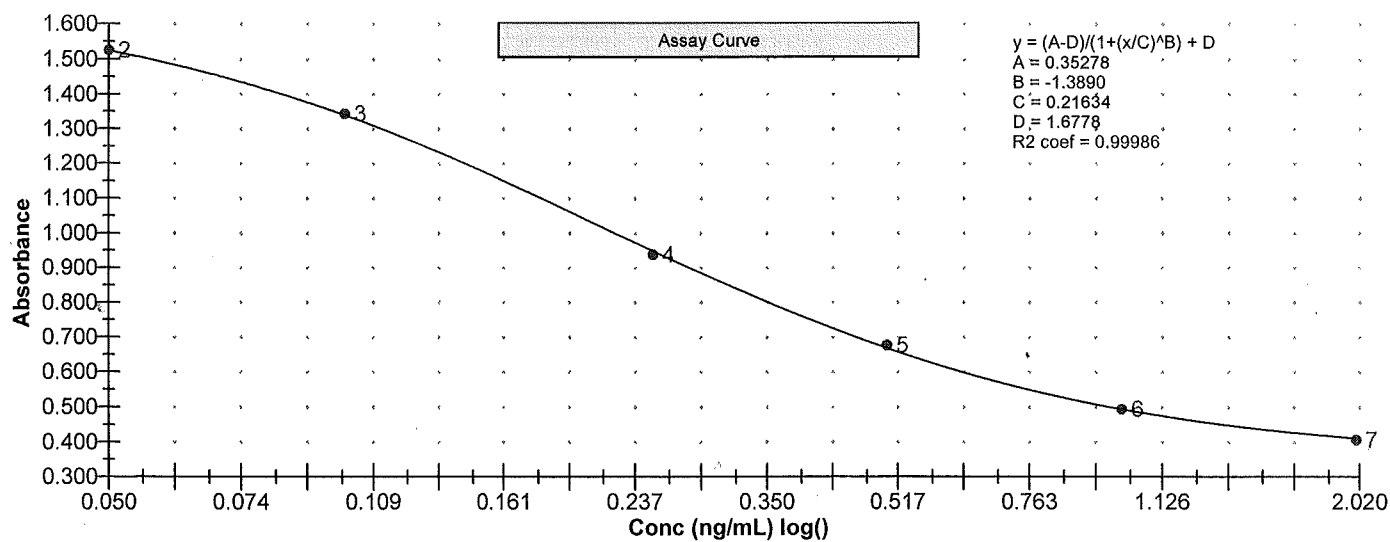
Std1, Concentration = 0.000, Minimum number to use: 2
Std2, Concentration = 0.050, Minimum number to use: 2
Std3, Concentration = 0.100, Minimum number to use: 2
Std4, Concentration = 0.250, Minimum number to use: 2
Std5, Concentration = 0.500, Minimum number to use: 2
Std6, Concentration = 1.000, Minimum number to use: 2
Std7, Concentration = 2.000, Minimum number to use: 2

Curve valid interval: 7 days 0 hours

Axis Mode: Y = Abs, X = Log(Conc)

Assay Calibration and Statistics

Name	Mean Abs	SD Abs	CV Abs	Mean Conc	SD Conc	CV Conc	Diff Conc
Normal Control	0.589	0.005	0.84	0.651	0.012	1.85	





Test Report

Test Information

Name/ID	Assay	Absorbance	Concentration	Interpretation	Reference	Position
7/25/2012 3:43:12 PM						
Std1	Cylindrospermopsin 1X	1.672 Abs	0.004 ng/mL			A01
Std1	Cylindrospermopsin 1X	1.679 Abs	< 0.000 ng/mL			B01
Std2	Cylindrospermopsin 1X	1.481 Abs	0.062 ng/mL			C01
Std2	Cylindrospermopsin 1X	1.572 Abs	0.037 ng/mL			D01
Std3	Cylindrospermopsin 1X	1.317 Abs	0.107 ng/mL			E01
Std3	Cylindrospermopsin 1X	1.371 Abs	0.091 ng/mL			F01
Std4	Cylindrospermopsin 1X	0.916 Abs	0.269 ng/mL			G01
Std4	Cylindrospermopsin 1X	0.961 Abs	0.244 ng/mL			H01
Std5	Cylindrospermopsin 1X	0.679 Abs	0.484 ng/mL			A02
Std5	Cylindrospermopsin 1X	0.675 Abs	0.490 ng/mL			B02
Std6	Cylindrospermopsin 1X	0.478 Abs	1.100 ng/mL			C02
Std6	Cylindrospermopsin 1X	0.512 Abs	0.907 ng/mL			D02
Std7	Cylindrospermopsin 1X	0.405 Abs	> 2.000 ng/mL			E02
Std7	Cylindrospermopsin 1X	0.410 Abs	> 2.000 ng/mL			F02
Normal Control	Cylindrospermopsin 1X	0.585 Abs	0.660 ng/mL			G02
Normal Control	Cylindrospermopsin 1X	0.592 Abs	0.643 ng/mL			H02
AB09101	Cylindrospermopsin 1X	2.825 Abs	< 0.000 ng/mL	Out(LR)	0.050 - 2.000	A03
AB09101	Cylindrospermopsin 1X	2.021 Abs [2.4230]	< 0.000 ng/mL [< 0.000]	Out(LR) [Out(LR)]	0.050 - 2.000	B03
Name/ID	Assay	Absorbance	Concentration	Interpretation	Reference	Position
7/25/2012 3:43:13 PM						
20120724LB	Cylindrospermopsin 1X	1.753 Abs	< 0.000 ng/mL	Out(LR)	0.050 - 2.000	C03
20120724LB	Cylindrospermopsin 1X	1.700 Abs [1.7265]	< 0.000 ng/mL [< 0.000]	Out(LR) [Out(LR)]	0.050 - 2.000	D03
AB09538	Cylindrospermopsin 1X	1.716 Abs	< 0.000 ng/mL	Out(LR)	0.050 - 2.000	E03
AB09538	Cylindrospermopsin 1X	1.629 Abs [1.6725]	0.021 ng/mL [0.004]	Low [Low]	0.050 - 2.000	F03
AB09538LD	Cylindrospermopsin 1X	1.664 Abs	0.008 ng/mL	LOW	0.050 - 2.000	G03
AB09538LD	Cylindrospermopsin 1X	1.701 Abs [1.6825]	< 0.000 ng/mL [< 0.000]	Out(LR) [Out(LR)]	0.050 - 2.000	H03
AB09125	Cylindrospermopsin 1X	2.241 Abs	< 0.000 ng/mL	Out(LR)	0.050 - 2.000	A04
AB09125	Cylindrospermopsin 1X	2.738 Abs [2.4895]	< 0.000 ng/mL [< 0.000]	Out(LR) [Out(LR)]	0.050 - 2.000	B04
AB09098	Cylindrospermopsin 1X	2.443 Abs	< 0.000 ng/mL	Out(LR)	0.050 - 2.000	C04
AB09098	Cylindrospermopsin 1X	2.219 Abs [2.3310]	< 0.000 ng/mL [< 0.000]	Out(LR) [Out(LR)]	0.050 - 2.000	D04
AB09096	Cylindrospermopsin 1X	1.813 Abs	< 0.000 ng/mL	Out(LR)	0.050 - 2.000	E04
AB09096	Cylindrospermopsin 1X	2.865 Abs [2.3390]	< 0.000 ng/mL [< 0.000]	Out(LR) [Out(LR)]	0.050 - 2.000	F04
AB09102	Cylindrospermopsin 1X	1.957 Abs	< 0.000 ng/mL	Out(LR)	0.050 - 2.000	G04
AB09102	Cylindrospermopsin 1X	1.655 Abs [1.8060]	0.012 ng/mL [< 0.000]	Low [Out(LR)]	0.050 - 2.000	H04
AB09097	Cylindrospermopsin 1X	1.686 Abs	< 0.000 ng/mL	Out(LR)	0.050 - 2.000	A05
AB09097	Cylindrospermopsin 1X	1.736 Abs [1.7110]	< 0.000 ng/mL [< 0.000]	Out(LR) [Out(LR)]	0.050 - 2.000	B05
AB09539	Cylindrospermopsin 1X	1.740 Abs	< 0.000 ng/mL	Out(LR)	0.050 - 2.000	C05
AB09539	Cylindrospermopsin 1X	1.636 Abs [1.6880]	0.018 ng/mL [< 0.000]	Low [Out(LR)]	0.050 - 2.000	D05
AB09099	Cylindrospermopsin 1X	1.652 Abs	0.013 ng/mL	LOW	0.050 - 2.000	E05
AB09099	Cylindrospermopsin 1X	1.682 Abs [1.6670]	< 0.000 ng/mL [0.007]	Out(LR) [Low]	0.050 - 2.000	F05
AB09100	Cylindrospermopsin 1X	1.589 Abs	0.033 ng/mL	LOW	0.050 - 2.000	G05
AB09100	Cylindrospermopsin 1X	1.695 Abs [1.6420]	< 0.000 ng/mL [0.016]	Out(LR) [Low]	0.050 - 2.000	H05

Notes

Signature

July 25, 12
Kef SWE