



Cylindrospermopsin ELISA Summary Report

Office of Water Quality - Watershed Assessment and Planning Branch

Sample #	Location	Date Collected	Date Analyzed	Conc. (ppb)
AB18521	Fairfax SRA	8/4/2014	8/7/2014	<0.050
AB18522	Paynetown SRA	8/4/2014	8/7/2014	<0.050
AB18523	Starve Hollow SRA	8/4/2014	8/7/2014	<0.050
AB18524	Deam Lake SRA	8/4/2014	8/7/2014	0.058
AB18525	Hardy Lake SRA	8/4/2014	8/7/2014	<0.050
AB18525LD	Hardy Lake SRA (Lab Duplicate)	8/4/2014	8/7/2014	<0.050
AB18531	Field Blank	8/4/2014	8/7/2014	<0.050
20140804LB	Lab Blank	8/4/2014	8/7/2014	<0.050
AB18526	Raccoon Lake SRA	8/5/2014	8/7/2014	<0.050
AB18527	Whitewater Memorial SP	8/5/2014	8/7/2014	<0.050
AB18528	Quakertown SRA	8/5/2014	8/7/2014	<0.050
AB18529	Mounds SRA	8/5/2014	8/7/2014	<0.050
AB18530	Quakertown SRA (Field Duplicate)	8/5/2014	8/7/2014	<0.050
AB18725	Summit Lake SP	8/5/2014	8/7/2014	<0.050



Assay Calibration Report

Assay Information

Assay Name: Cylindrospermopsin 1X Units: ng/mL
 Assay Mode: 4-Parameter Logistic # of decimals: 3
 Normal: 0.050 - 2.000 Assay Description:

Controls:
 Normal Control

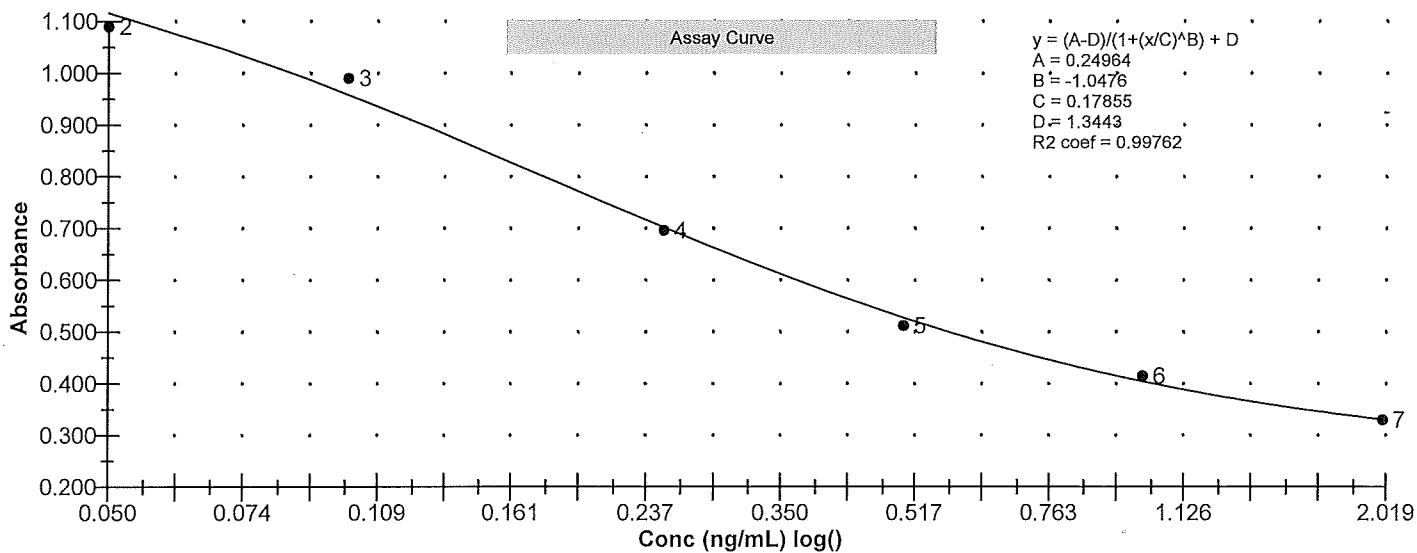
Standards:

Std1, Concentration = 0.000, Minimum number to use: 3
 Std2, Concentration = 0.050, Minimum number to use: 3
 Std3, Concentration = 0.100, Minimum number to use: 3
 Std4, Concentration = 0.250, Minimum number to use: 3
 Std5, Concentration = 0.500, Minimum number to use: 3
 Std6, Concentration = 1.000, Minimum number to use: 3
 Std7, Concentration = 2.000, Minimum number to use: 3
 Curve valid interval: 7 days 0 hours
 Axis Mode: Y = Abs, X = Log(Conc)

Assay Calibration and Statistics

Name	Absorbance	Concentration	Position
8/7/2014 10:52:11 AM			
Std1	1.363 Abs	< 0.000 ng/mL	A01
Std1	1.357 Abs	< 0.000 ng/mL	B01
Std1	1.327 Abs	0.000 ng/mL	C01
Std2	1.082 Abs	0.059 ng/mL	D01
Std2	1.098 Abs	0.055 ng/mL	E01
Std3	0.984 Abs	0.090 ng/mL	G01
Std3	0.984 Abs	0.090 ng/mL	H01
Std3	1.002 Abs	0.084 ng/mL	A02
Std4	0.701 Abs	0.250 ng/mL	B02
Std4	0.700 Abs	0.251 ng/mL	C02
Std4	0.688 Abs	0.262 ng/mL	D02
Std5	0.496 Abs	0.581 ng/mL	E02
Std5	0.514 Abs	0.533 ng/mL	F02
Std5	0.527 Abs	0.501 ng/mL	G02
Std6	0.422 Abs	0.886 ng/mL	H02
Std6	0.413 Abs	0.940 ng/mL	A03
Std6	0.409 Abs	0.968 ng/mL	B03
Std7	0.342 Abs	1.740 ng/mL	C03
Std7	0.332 Abs	1.960 ng/mL	D03
Std7	0.316 Abs	> 2.000 ng/mL	E03
8/7/2014 10:52:11 AM			
Normal Control	0.446 Abs	0.762 ng/mL	H03
Normal Control	0.457 Abs	0.715 ng/mL	G03
Normal Control	0.445 Abs	0.767 ng/mL	F03

Name	Mean Abs	SD Abs	CV Abs	Mean Conc	SD Conc	CV Conc	Diff Conc
Std1	1.349	0.019	1.43				
Std2	1.090	0.011	1.04	0.057	0.003	4.96	14.00
Std3	0.990	0.010	1.05	0.088	0.003	3.94	-12.00





Test Report

Test Information

Name/ID	Assay	Absorbance	Concentration	Interpretation	Reference	Position
8/7/2014 10:52:11 AM						
Std1	Cylindrospermopsin 1X	1.363 Abs	< 0.000 ng/mL		0.000	A01
Std1	Cylindrospermopsin 1X	1.357 Abs	< 0.000 ng/mL		0.000	B01
Std1	Cylindrospermopsin 1X	1.327 Abs	0.000 ng/mL		0.000	C01
Std2	Cylindrospermopsin 1X	1.082 Abs	0.065 ng/mL		0.050	D01
Std2	Cylindrospermopsin 1X	1.098 Abs	0.060 ng/mL		0.050	E01
Std3	Cylindrospermopsin 1X	0.984 Abs	0.096 ng/mL		0.100	G01
Std3	Cylindrospermopsin 1X	0.984 Abs	0.096 ng/mL		0.100	H01
Std3	Cylindrospermopsin 1X	1.002 Abs	0.090 ng/mL		0.100	A02
Std4	Cylindrospermopsin 1X	0.701 Abs	0.250 ng/mL		0.250	B02
Std4	Cylindrospermopsin 1X	0.700 Abs	0.251 ng/mL		0.250	C02
Std4	Cylindrospermopsin 1X	0.688 Abs	0.261 ng/mL		0.250	D02
Std5	Cylindrospermopsin 1X	0.496 Abs	0.566 ng/mL		0.500	E02
Std5	Cylindrospermopsin 1X	0.514 Abs	0.519 ng/mL		0.500	F02
Std5	Cylindrospermopsin 1X	0.527 Abs	0.489 ng/mL		0.500	G02
Std6	Cylindrospermopsin 1X	0.422 Abs	0.866 ng/mL		1.000	H02
Std6	Cylindrospermopsin 1X	0.413 Abs	0.922 ng/mL		1.000	A03
Std6	Cylindrospermopsin 1X	0.409 Abs	0.948 ng/mL		1.000	B03
Std7	Cylindrospermopsin 1X	0.342 Abs	1.804 ng/mL		2.000	C03
Std7	Cylindrospermopsin 1X	0.332 Abs	> 2.000 ng/mL		2.000	D03
Std7	Cylindrospermopsin 1X	0.316 Abs	> 2.000 ng/mL		2.000	E03
Normal Control	Cylindrospermopsin 1X	0.445 Abs	0.767 ng/mL			F03
Normal Control	Cylindrospermopsin 1X	0.457 Abs	0.715 ng/mL			G03
Normal Control	Cylindrospermopsin 1X	0.446 Abs	0.762 ng/mL			H03
AB18521	Cylindrospermopsin 1X	1.387 Abs	< 0.000 ng/mL	Out(LR)	0.050 - 2.000	A04
AB18521	Cylindrospermopsin 1X	1.378 Abs	< 0.000 ng/mL	Out(LR)	0.050 - 2.000	B04
AB18521	Cylindrospermopsin 1X	1.366 Abs	< 0.000 ng/mL	Out(LR)	0.050 - 2.000	C04
AB18522	Cylindrospermopsin 1X	1.418 Abs	< 0.000 ng/mL	Out(LR)	0.050 - 2.000	D04
AB18522	Cylindrospermopsin 1X	1.509 Abs	< 0.000 ng/mL	Out(LR)	0.050 - 2.000	E04
AB18522	Cylindrospermopsin 1X	1.408 Abs	< 0.000 ng/mL	Out(LR)	0.050 - 2.000	F04
AB18523	Cylindrospermopsin 1X	1.354 Abs	< 0.000 ng/mL	Out(LR)	0.050 - 2.000	G04
AB18523	Cylindrospermopsin 1X	1.421 Abs	< 0.000 ng/mL	Out(LR)	0.050 - 2.000	H04
AB18523	Cylindrospermopsin 1X	1.345 Abs	< 0.000 ng/mL	Out(LR)	0.050 - 2.000	A05
AB18524	Cylindrospermopsin 1X	1.108 Abs	0.052 ng/mL		0.050 - 2.000	B05
AB18524	Cylindrospermopsin 1X	1.039 Abs	0.072 ng/mL		0.050 - 2.000	C05
AB18524	Cylindrospermopsin 1X	1.119 Abs	0.049 ng/mL	LOW	0.050 - 2.000	D05
AB18525	Cylindrospermopsin 1X	1.427 Abs	< 0.000 ng/mL	Out(LR)	0.050 - 2.000	E05
AB18525	Cylindrospermopsin 1X	1.345 Abs	< 0.000 ng/mL	Out(LR)	0.050 - 2.000	F05
AB18525	Cylindrospermopsin 1X	1.309 Abs	0.000 ng/mL	LOW	0.050 - 2.000	G05
AB18525LD	Cylindrospermopsin 1X	1.437 Abs	< 0.000 ng/mL	Out(LR)	0.050 - 2.000	H05
AB18525LD	Cylindrospermopsin 1X	1.306 Abs	0.000 ng/mL	LOW	0.050 - 2.000	A06
AB18525LD	Cylindrospermopsin 1X	1.277 Abs	0.000 ng/mL	LOW	0.050 - 2.000	B06
AB18531	Cylindrospermopsin 1X	1.335 Abs	0.000 ng/mL	LOW	0.050 - 2.000	C06
AB18531	Cylindrospermopsin 1X	1.224 Abs	0.024 ng/mL	LOW	0.050 - 2.000	D06
AB18531	Cylindrospermopsin 1X	1.449 Abs	< 0.000 ng/mL	Out(LR)	0.050 - 2.000	E06
20140804LB	Cylindrospermopsin 1X	1.371 Abs	< 0.000 ng/mL	Out(LR)	0.050 - 2.000	F06
20140804LB	Cylindrospermopsin 1X	1.432 Abs	< 0.000 ng/mL	Out(LR)	0.050 - 2.000	G06
20140804LB	Cylindrospermopsin 1X	1.573 Abs	< 0.000 ng/mL	Out(LR)	0.050 - 2.000	H06
AB18526	Cylindrospermopsin 1X	1.295 Abs	0.000 ng/mL	LOW	0.050 - 2.000	A07

The data in this report is preliminary without a quality control report. This data is not warranted for accuracy or other purposes.

Laboratory Analyst Signature

Date

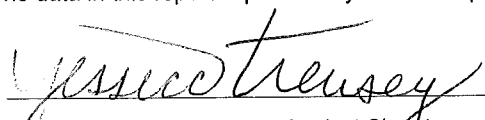


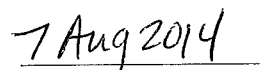
Test Report

Test Information

Name/ID	Assay	Absorbance	Concentration	Interpretation	Reference	Position
AB18526	Cyindrospermopsin 1X	1.377 Abs	< 0.000 ng/mL	Out(LR)	0.050 - 2.000	B07
AB18526	Cyindrospermopsin 1X	1.323 Abs	0.000 ng/mL	LOW	0.050 - 2.000	C07
AB18527	Cyindrospermopsin 1X	1.321 Abs	0.000 ng/mL	LOW	0.050 - 2.000	D07
AB18527	Cyindrospermopsin 1X	1.345 Abs	< 0.000 ng/mL	Out(LR)	0.050 - 2.000	E07
AB18527	Cyindrospermopsin 1X	1.242 Abs	0.020 ng/mL	LOW	0.050 - 2.000	F07
AB18528	Cyindrospermopsin 1X	1.275 Abs	0.000 ng/mL	LOW	0.050 - 2.000	G07
AB18528	Cyindrospermopsin 1X	1.421 Abs	< 0.000 ng/mL	Out(LR)	0.050 - 2.000	H07
AB18528	Cyindrospermopsin 1X	1.331 Abs	0.000 ng/mL	LOW	0.050 - 2.000	A08
AB18529	Cyindrospermopsin 1X	1.370 Abs	< 0.000 ng/mL	Out(LR)	0.050 - 2.000	B08
AB18529	Cyindrospermopsin 1X	1.616 Abs	< 0.000 ng/mL	Out(LR)	0.050 - 2.000	C08
AB18529	Cyindrospermopsin 1X	1.849 Abs	< 0.000 ng/mL	Out(LR)	0.050 - 2.000	D08
AB18530	Cyindrospermopsin 1X	1.237 Abs	0.021 ng/mL	LOW	0.050 - 2.000	E08
AB18530	Cyindrospermopsin 1X	1.368 Abs	< 0.000 ng/mL	Out(LR)	0.050 - 2.000	F08
AB18530	Cyindrospermopsin 1X	1.428 Abs	< 0.000 ng/mL	Out(LR)	0.050 - 2.000	G08
AB18725	Cyindrospermopsin 1X	1.340 Abs	0.000 ng/mL	LOW	0.050 - 2.000	H08
AB18725	Cyindrospermopsin 1X	1.387 Abs	< 0.000 ng/mL	Out(LR)	0.050 - 2.000	A09
AB18725	Cyindrospermopsin 1X	1.436 Abs	< 0.000 ng/mL	Out(LR)	0.050 - 2.000	B09

The data in this report is preliminary without a quality control report. This data is not warranted for accuracy or other purposes.


Laboratory Analyst Signature


Date