



Microcystins ELISA Summary Report

Office of Water Quality - Watershed Assessment and Planning Branch

Sample #	Location	Date Collected	Date Analyzed	Conc. (ppb)
AB18532	Mississinewa Miami SRA	8/11/2014	8/13/2014	1.683
AB18533	Potato Creek SP	8/11/2014	8/13/2014	0.171
AB18537	Ferdinand SP	8/11/2014	8/13/2014	< 0.150
AB18538	Lincoln SP	8/11/2014	8/13/2014	0.212
AB18540	Field Blank	8/11/2014	8/13/2014	< 0.150
AB18532LD	Mississinewa Miami (Lab Duplicate)	8/11/2014	8/13/2014	1.925
20149811LB	Lab Blank	8/11/2014	8/13/2014	< 0.150
AB18534	Pokagon SP	8/12/2014	8/13/2014	< 0.150
AB18535	Sand Lake Chain O'Lakes SP	8/12/2014	8/13/2014	0.169
AB18536	Salamonie Lost Bridge West SRA	8/12/2014	8/13/2014	0.965
AB18539	Pokagon SP (Field Duplicate)	8/12/2014	8/13/2014	< 0.150



Assay Calibration Report

Assay Information

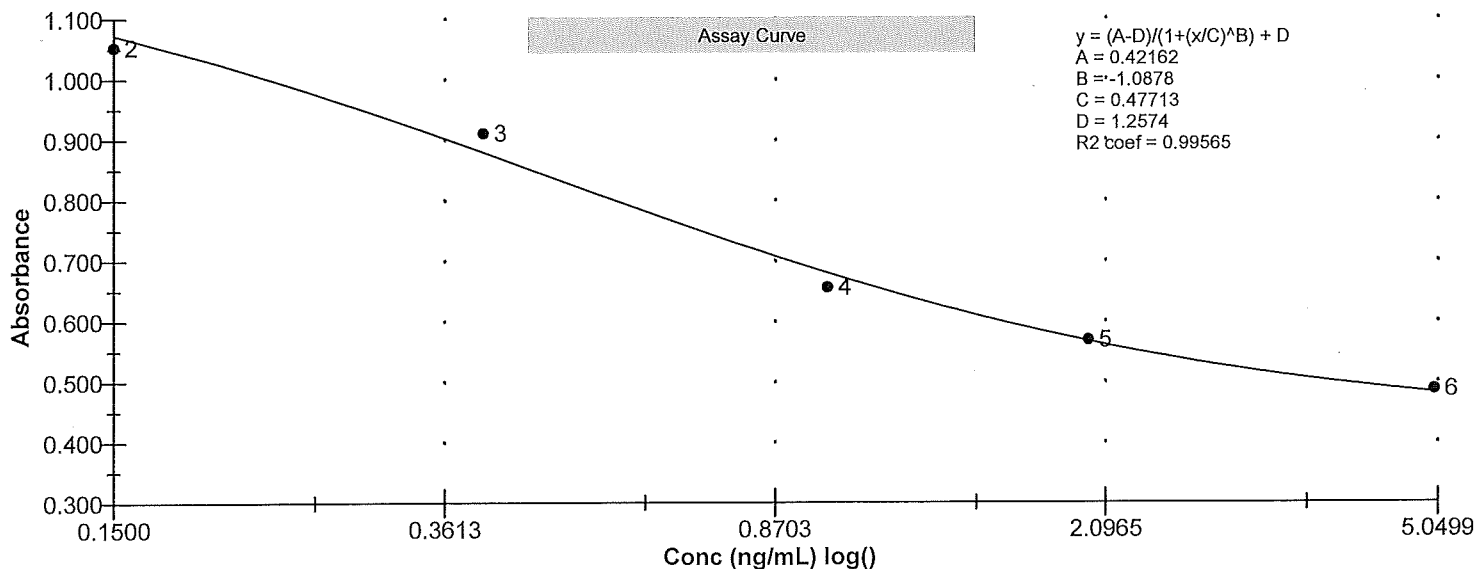
Assay Name: Microcystins ADDA Units: ng/mL
 Assay Mode: 4-Parameter Logistic # of decimals: 4
 Normal: 0.1500 - 5.0000 Assay Description:

Controls:
 Normal Control
 Standards:
 Std1, Concentration = 0.0000, Minimum number to use: 2
 Std2, Concentration = 0.1500, Minimum number to use: 2
 Std3, Concentration = 0.4000, Minimum number to use: 2
 Std4, Concentration = 1.0000, Minimum number to use: 2
 Std5, Concentration = 2.0000, Minimum number to use: 2
 Std6, Concentration = 5.0000, Minimum number to use: 2
 Curve valid interval: 7 days 0 hours
 Axis Mode: Y = Abs, X = Log(Conc)

Assay Calibration and Statistics

Name	Absorbance	Concentration	Position
8/13/2014 11:42:26 AM			
Std1	1.256 Abs	0.0013 ng/mL	A01
Std1	1.267 Abs	< 0.0000 ng/mL	B01
Std2	1.038 Abs	0.1846 ng/mL	C01
Std2	1.069 Abs	0.1535 ng/mL	D01
Std3	0.882 Abs	0.3955 ng/mL	E01
Std3	0.939 Abs	0.3055 ng/mL	F01
Std4	0.660 Abs	1.1100 ng/mL	G01
Std4	0.651 Abs	1.1665 ng/mL	H01
Std5	0.550 Abs	2.2900 ng/mL	A02
Std5	0.589 Abs	1.7050 ng/mL	B02
Std6	0.486 Abs	4.6750 ng/mL	C02
Std6	0.488 Abs	4.5350 ng/mL	D02
8/13/2014 11:42:26 AM			
Normal Control	0.774 Abs	0.6380 ng/mL	F02
Normal Control	0.775 Abs	0.6350 ng/mL	E02

Name	Mean Abs	SD Abs	CV Abs	Mean Conc	SD Conc	CV Conc	Diff Conc
Std1	1.262	0.008	0.62				
Std2	1.053	0.022	2.08	0.169	0.022	13.01	12.67
Std3	0.911	0.040	4.43	0.350	0.064	18.16	-12.50
Std4	0.656	0.006	0.97	1.138	0.040	3.51	13.80
Std5	0.569	0.028	4.84	1.997	0.414	20.71	-0.15
Std6	0.487	0.001	0.29	4.605	0.099	2.15	-7.90
Normal Control	0.775	0.001	0.09	0.637	0.002	0.33	





Test Report

Test Information

Name/ID	Assay	Absorbance	Concentration	Interpretation	Reference	Position
8/13/2014 11:42:26 AM						
Std1	Microcystins ADDA	1.256 Abs	0.0013 ng/mL		0.0000	A01
Std1	Microcystins ADDA	1.267 Abs	< 0.0000 ng/mL		0.0000	B01
Std2	Microcystins ADDA	1.038 Abs	0.1846 ng/mL		0.1500	C01
Std2	Microcystins ADDA	1.089 Abs	0.1535 ng/mL		0.1500	D01
Std3	Microcystins ADDA	0.882 Abs	0.3955 ng/mL		0.4000	E01
Std3	Microcystins ADDA	0.939 Abs	0.3055 ng/mL		0.4000	F01
Std4	Microcystins ADDA	0.660 Abs	1.1100 ng/mL		1.0000	G01
Std4	Microcystins ADDA	0.651 Abs	1.1665 ng/mL		1.0000	H01
Std5	Microcystins ADDA	0.550 Abs	2.2900 ng/mL		2.0000	A02
Std5	Microcystins ADDA	0.589 Abs	1.7050 ng/mL		2.0000	B02
Std6	Microcystins ADDA	0.486 Abs	4.6750 ng/mL		5.0000	C02
Std6	Microcystins ADDA	0.488 Abs	4.5350 ng/mL		5.0000	D02
Normal Control	Microcystins ADDA	0.775 Abs	0.6350 ng/mL			E02
Normal Control	Microcystins ADDA	0.774 Abs	0.6380 ng/mL			F02
AB18532	Microcystins ADDA	0.586 Abs	1.7400 ng/mL		0.1500 - 5.0000	G02
AB18532	Microcystins ADDA	0.596 Abs	1.6250 ng/mL		0.1500 - 5.0000	H02
AB18533	Microcystins ADDA	1.062 Abs	0.1602 ng/mL		0.1500 - 5.0000	A03
AB18533	Microcystins ADDA	1.040 Abs	0.1825 ng/mL		0.1500 - 5.0000	B03
AB18537	Microcystins ADDA	1.310 Abs	< 0.0000 ng/mL	Out(LR)	0.1500 - 5.0000	C03
AB18537	Microcystins ADDA	1.287 Abs	< 0.0000 ng/mL	Out(LR)	0.1500 - 5.0000	D03
AB18538	Microcystins ADDA	1.031 Abs	0.1920 ng/mL		0.1500 - 5.0000	E03
AB18538	Microcystins ADDA	0.995 Abs	0.2325 ng/mL		0.1500 - 5.0000	F03
AB18540	Microcystins ADDA	1.304 Abs	< 0.0000 ng/mL	Out(LR)	0.1500 - 5.0000	G03
AB18540	Microcystins ADDA	1.343 Abs	< 0.0000 ng/mL	Out(LR)	0.1500 - 5.0000	H03
AB18532LD	Microcystins ADDA	0.563 Abs	2.0600 ng/mL		0.1500 - 5.0000	A04
AB18532LD	Microcystins ADDA	0.582 Abs	1.7900 ng/mL		0.1500 - 5.0000	B04
20140811LB	Microcystins ADDA	1.197 Abs	0.0457 ng/mL	LOW	0.1500 - 5.0000	C04
20140811LB	Microcystins ADDA	1.284 Abs	< 0.0000 ng/mL	Out(LR)	0.1500 - 5.0000	D04
AB18534	Microcystins ADDA	1.057 Abs	0.1651 ng/mL		0.1500 - 5.0000	E04
AB18534	Microcystins ADDA	1.103 Abs	0.1218 ng/mL	LOW	0.1500 - 5.0000	F04
AB18535	Microcystins ADDA	1.031 Abs	0.1920 ng/mL		0.1500 - 5.0000	G04
AB18535	Microcystins ADDA	1.077 Abs	0.1457 ng/mL	LOW	0.1500 - 5.0000	H04
AB18536	Microcystins ADDA	0.642 Abs	1.2270 ng/mL		0.1500 - 5.0000	A05
AB18536	Microcystins ADDA	0.753 Abs	0.7020 ng/mL		0.1500 - 5.0000	B05
AB18539	Microcystins ADDA	1.132 Abs	0.0969 ng/mL	LOW	0.1500 - 5.0000	C05
AB18539	Microcystins ADDA	1.145 Abs	0.0861 ng/mL	LOW	0.1500 - 5.0000	D05

The data in this report is preliminary without a quality control report. This data is not warranted for accuracy or other purposes.

Betty Rutter

Laboratory Analyst Signature

8/14/14

Date