



Department of Environmental Management  
Office of Water Quality  
Wetlands Section

Indiana

Publication Date:  
6/6/2024

Closing Date:  
7/5/2024

# JOINT PUBLIC NOTICE

IDEM ID Number:  
2024-423-67-MMR-A  
2024-424-67-MMR-A

Corps of Engineers ID Number:  
LRL-2024-00034-cte

### To all interested parties:

This letter shall serve as a formal notice of the receipt of an application for a **Section 401 Water Quality Certification** and a **State Isolated Wetland Individual Permit** by the Indiana Department of Environmental Management (IDEM). The purpose of the notice is to inform the public of active applications submitted for water quality certification under Section 401 of the Clean Water Act (33 U.S.C. § 1341) and permits required under IC 13-18-22 and to solicit comments and information on any impacts to water quality related to the proposed project. IDEM will evaluate whether the project complies with Indiana's water quality standards as set forth at 327 IAC 2 and all applicable provisions of IC 13-18-22.

- |                                |   |                  |  |
|--------------------------------|---|------------------|--|
| <b>1. Applicant:</b>           | Jeffrey Mahan<br>City of Greencastle<br>P.O. Box 607<br>Greencastle, IN 46135   | <b>2. Agent:</b> | Bailey Duncan<br>Meristem, LLC<br>877 Port Drive<br>Avon, IN 46123 |
| <b>3. Project location:</b>    | Putnam County<br>Latitude: 39.634083 Longitude: -86.85472 (Centroid)<br>South of Veterans Memorial Highway, between Zinc Mill Rd and Jackson St in Greencastle. The trail will be 1.5 miles long.   |                  |  |
| <b>4. Affected waterbody:</b>  | One emergent isolated wetland and two emergent federally jurisdictional wetlands  |                  |  |
| <b>5. Project Description:</b> | The project proposes to construct a connector trail between Zinc Mill Apartments Frontage Peoples Pathways Campus Link Trail and Putnam Nature Trail. The City of Greencastle plans to permanently impact 0.410 acre of isolated wetland and 0.658 acre of federally jurisdictional wetlands. To compensate for these impacts, the applicant proposes to purchase 1.234 acres of emergent wetland credits from the DNR In-Lieu Fee Program. |                  |  |

**Comment period:** Any person or entity who wishes to submit comments or information relevant to the aforementioned project may do so by the closing date noted above. Only comments or information related to water quality or potential impacts of the project on water quality can be considered by IDEM in the state isolated wetland permit review and the water quality certification review processes.

**Public Hearing:** Any person may submit a written request that a public hearing be held to consider issues related to water quality in connection with the project detailed in this notice. The request for a hearing should be submitted within the comment period to be considered timely. The request should also state the reason for the public hearing as specifically as possible to assist IDEM in determining whether a public hearing is warranted.


**Questions?** Additional information may be obtained from Meghan Rose, Project Manager, at 317-460-6530 or [MMROSE@IDEM.IN.Gov](mailto:MMROSE@IDEM.IN.Gov). Please address all correspondence to the project manager and reference the IDEM project identification number listed on this notice. Indicate if you wish to receive a copy of IDEM's final decision. Written comments and inquiries may be forwarded to -

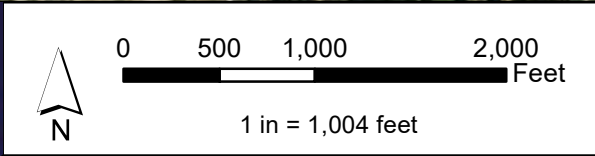
Indiana Department of Environmental Management  
100 North Senate Avenue  
MC65-42 WQS IGCN 1255  
Indianapolis, Indiana 46204-2251  
FAX: 317/232-8406





**Legend**

 Project Area Corridor (1.5 miles)



Indiana Office of Information Technology, Indiana University Spatial Data Portal, UITS, Woolpert Inc., Esri, Redlands CA  
 Imagery Date: 2019

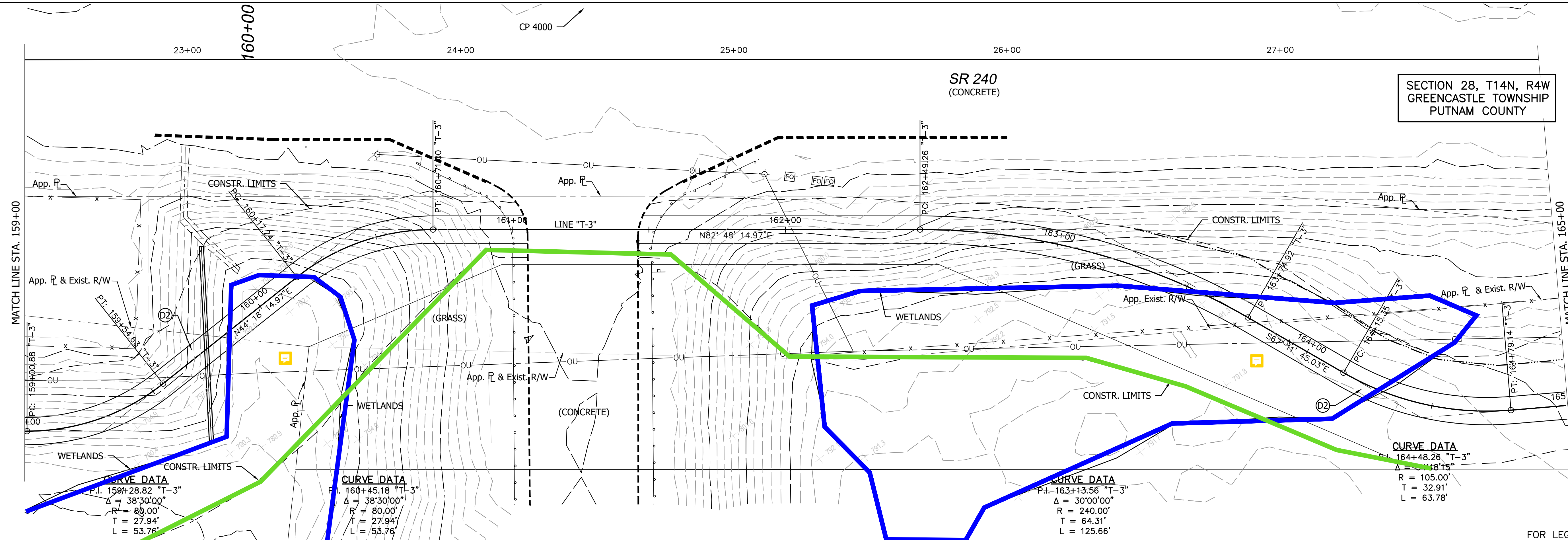
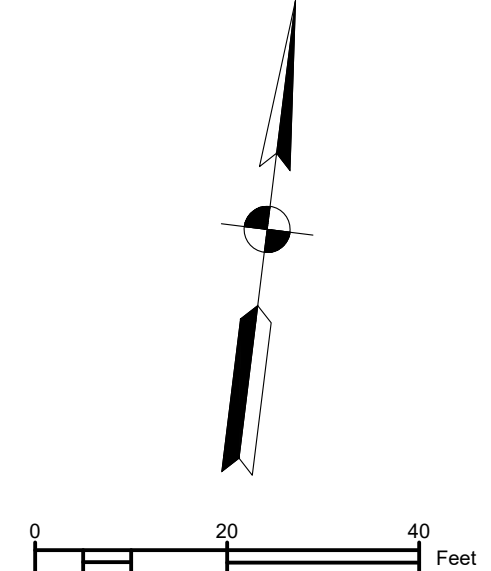
**Attachment 3:**

**Project Area on Aerial Imagery (2019)**

Campus Link Trail Extension  
 Greencastle Township  
 Putnam County, Indiana



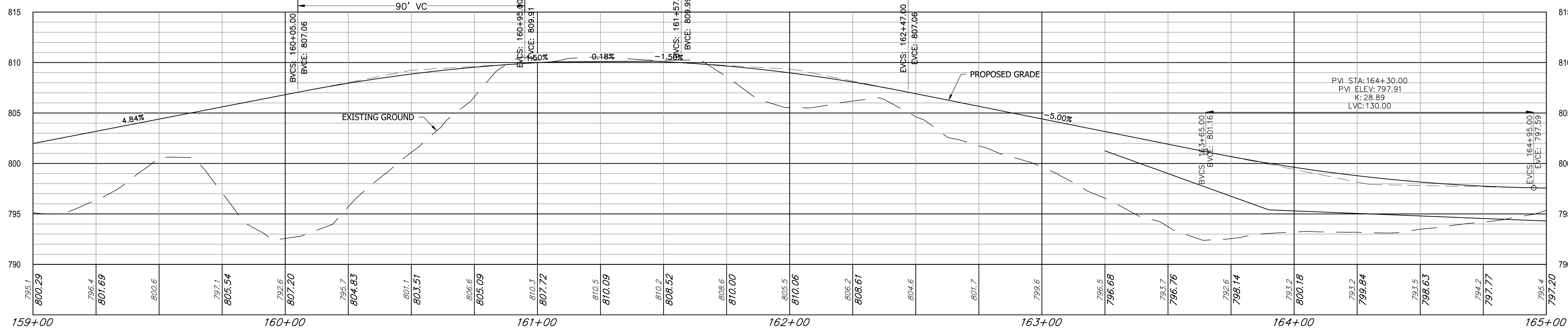
SECTION 28, T14N, R4W  
GREENCASTLE TOWNSHIP  
PUTNAM COUNTY



**PLAN**  
STA. 159+00 to STA. 165+00 LINE "T-3"  
HORIZONTAL SCALE: 1" = 20'

PVI STA = 162+02.00  
PVI ELEV = 809.31  
HP ELEV = 809.99  
HP STA = 161+57.00  
K=25.71  
90' VC

FOR LEGEND SEE SHEET 3.  
ALL R/W DESCRIBED FROM LINE "A" EXCEPT AS SHOWN.  
LINE "T-3" TO BE CONSTRUCTED.



**PROFILE**  
STA. 159+00 to STA. 165+00 LINE "T-3"  
HORIZONTAL SCALE: 1" = 20'  
VERTICAL SCALE: 1" = 5'

FOR SURVEY CONTROL, SEE SHEET 5.

**ALIGN**

1285 S. Jackson Street, Suite B  
Greencastle, IN 46135  
765.653.6710  
ALIGNCEC.COM

2401 Directors Row, Suite D  
Indianapolis, IN 46241

DESIGNED: MNG  
CHECKED: JDM

DRAWN: DED  
CHECKED: JDM

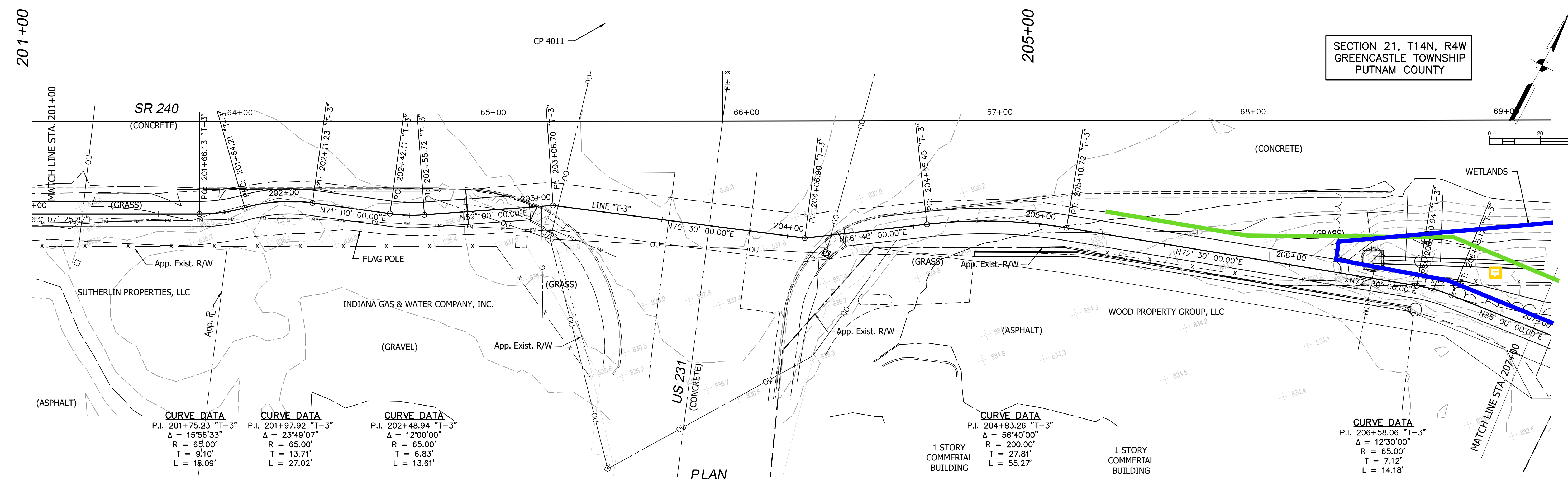
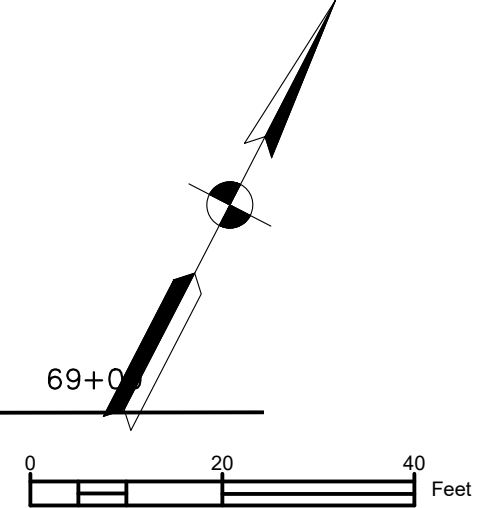
CITY OF GREENCASTLE

PLAN AND PROFILE  
LINE "T-3"

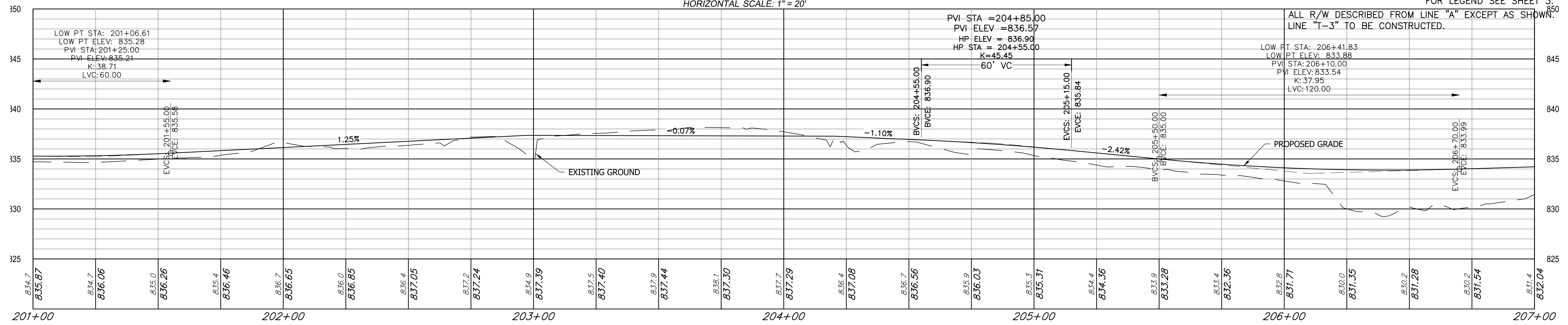
HORIZONTAL SCALE	BRIDGE FILE
1" = 20'	N/A
VERTICAL SCALE	DESIGNATION
1" = 5'	N/A
SURVEY BOOK	SHEETS
N/A	13 of
CONTRACT	PROJECT
N/A	NLT-3-17



SECTION 21, T14N, R4W  
GREENCASTLE TOWNSHIP  
PUTNAM COUNTY



**PLAN**  
STA. 201+00 to STA. 207+00 LINE "T-3"  
HORIZONTAL SCALE: 1" = 20'



FOR LEGEND SEE SHEET 3.

ALL R/W DESCRIBED FROM LINE "A" EXCEPT AS SHOWN. LINE "T-3" TO BE CONSTRUCTED.

FOR SURVEY CONTROL, SEE SHEET 5.

**ALIGN**  
1285 S. Jackson Street, Suite B  
Greencastle, IN 46135  
765.653.6710  
ALIGNCEC.COM

2401 Directors Row, Suite D  
Indianapolis, IN 46241

DESIGNED:	MNG	DRAWN:	DED
CHECKED:	JDM	CHECKED:	JDM

**CITY OF GREENCASTLE**

**PLAN AND PROFILE**  
**LINE "T-3"**

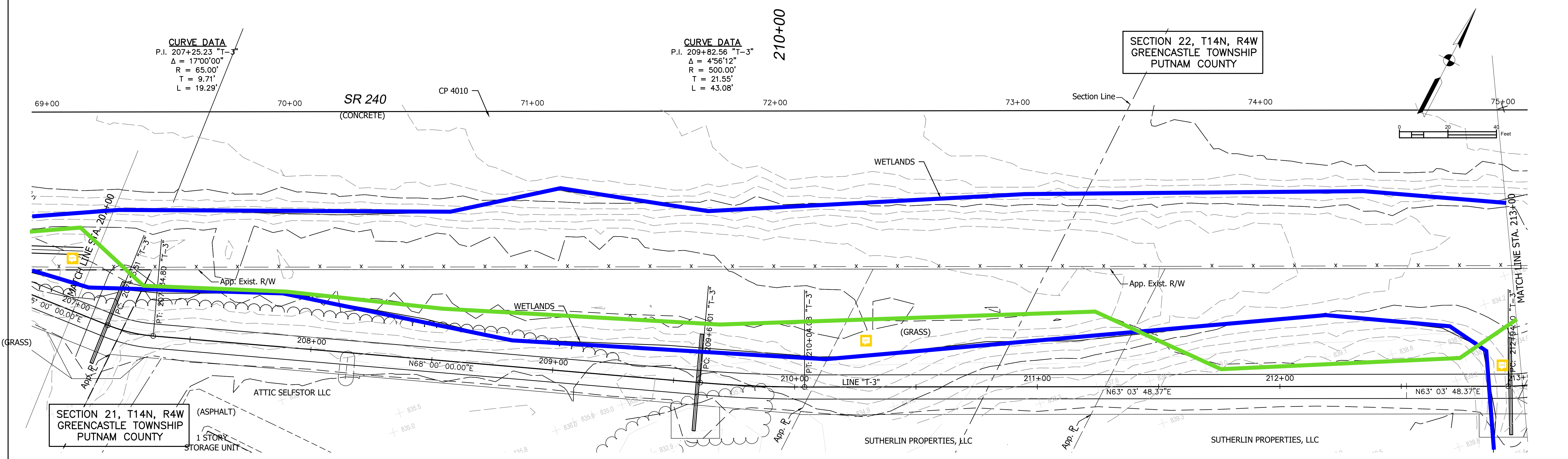
HORIZONTAL SCALE	BRIDGE FILE
1" = 20'	N/A
VERTICAL SCALE	DESIGNATION
1" = 5'	N/A
SURVEY BOOK	SHEETS
N/A	20 of
CONTRACT	PROJECT
N/A	NLT-3-17



**CURVE DATA**  
 P.I. 207+25.23 "T-3"  
 $\Delta = 17^{\circ}00'00"$   
 R = 65.00'  
 T = 9.71'  
 L = 19.29'

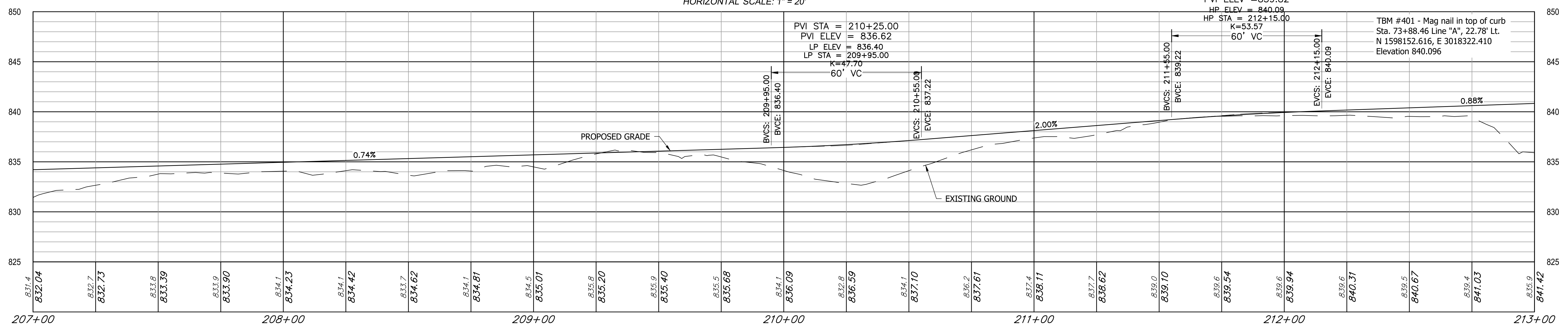
**CURVE DATA**  
 P.I. 209+82.56 "T-3"  
 $\Delta = 4^{\circ}56'12"$   
 R = 500.00'  
 T = 21.55'  
 L = 43.08'

SECTION 22, T14N, R4W  
 GREENCASTLE TOWNSHIP  
 PUTNAM COUNTY



**PLAN**  
 STA. 207+00 to STA. 213+00 LINE "T-3"  
 HORIZONTAL SCALE: 1" = 20'

FOR LEGEND SEE SHEET 3.  
 ALL R/W DESCRIBED FROM LINE "A" EXCEPT AS SHOWN.  
 LINE "T-3" TO BE CONSTRUCTED.



**PROFILE**  
 STA. 207+00 to STA. 213+00 LINE "T-3"  
 HORIZONTAL SCALE: 1" = 20'  
 VERTICAL SCALE: 1" = 5'

FOR SURVEY CONTROL, SEE SHEET 5.

**ALIGN**  
 1285 S. Jackson Street, Suite B  
 Greencastle, IN 46135  
 765.653.6710  
 ALIGNCEC.COM

2401 Directors Row, Suite D  
 Indianapolis, IN 46241

DESIGNED:	MNG	DRAWN:	DED
CHECKED:	JDM	CHECKED:	JDM

**CITY OF GREENCASTLE**

**PLAN AND PROFILE**  
**LINE "T-3"**

HORIZONTAL SCALE	BRIDGE FILE
1" = 20'	N/A
VERTICAL SCALE	DESIGNATION
1" = 5'	N/A
SURVEY BOOK	SHEETS
N/A	21 of
CONTRACT	PROJECT
N/A	NLT-3-17



SECTION 22, T14N, R4W  
GREENCASTLE TOWNSHIP  
PUTNAM COUNTY

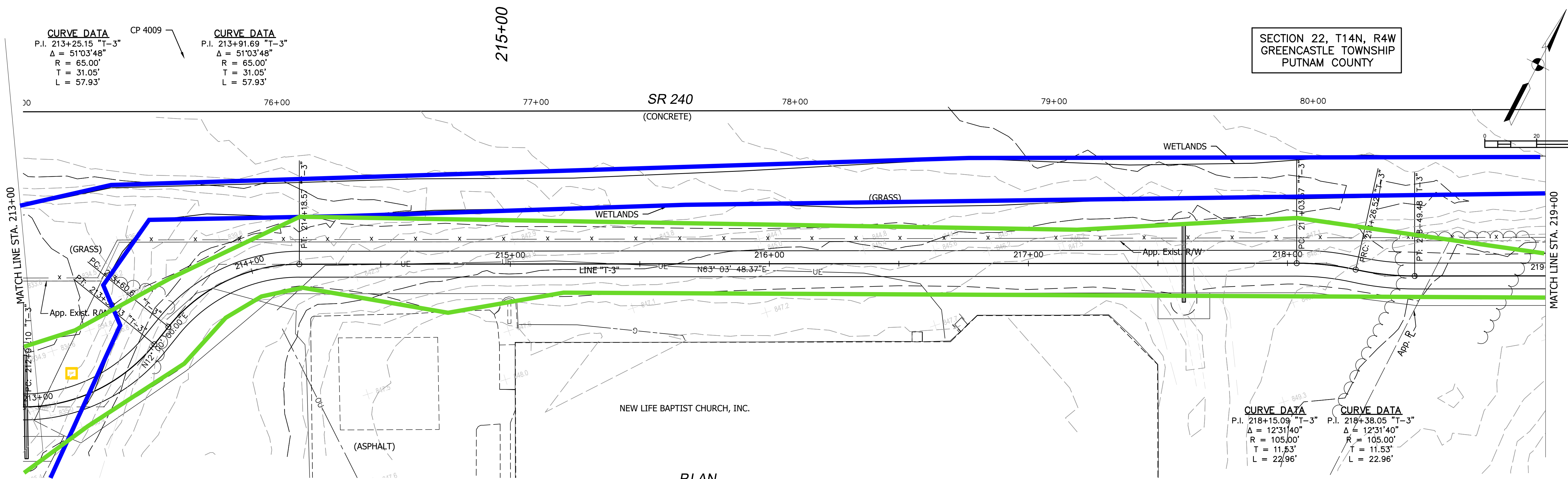
**CURVE DATA**  
P.I. 213+25.15 "T-3"  
 $\Delta = 51^{\circ}03'48"$   
R = 65.00'  
T = 31.05'  
L = 57.93'

CP 4009

**CURVE DATA**  
P.I. 213+91.69 "T-3"  
 $\Delta = 51^{\circ}03'48"$   
R = 65.00'  
T = 31.05'  
L = 57.93'

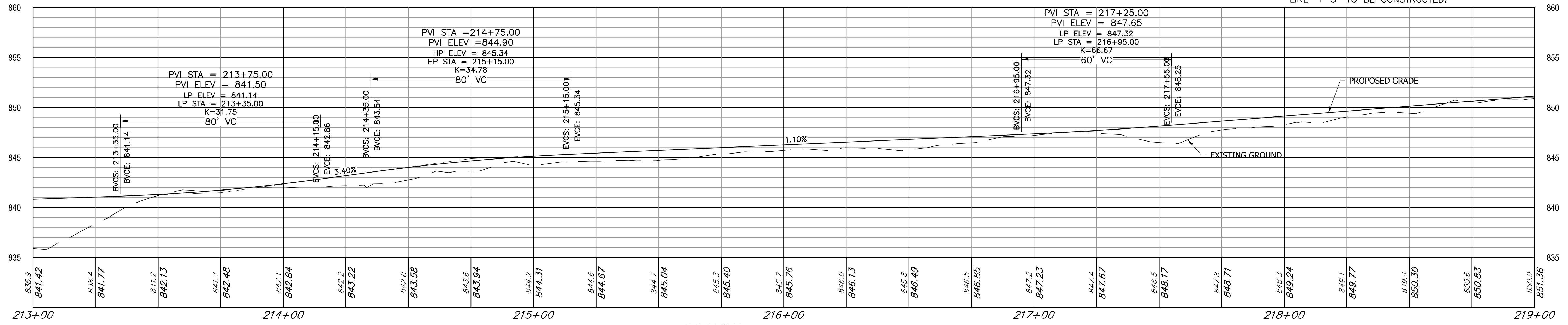
**CURVE DATA**  
P.I. 218+15.09 "T-3"  
 $\Delta = 12^{\circ}31'40"$   
R = 105.00'  
T = 11.53'  
L = 22.96'

**CURVE DATA**  
P.I. 218+38.05 "T-3"  
 $\Delta = 12^{\circ}31'40"$   
R = 105.00'  
T = 11.53'  
L = 22.96'



**PLAN**  
STA. 201+00 to STA. 207+00 LINE "T-3"  
HORIZONTAL SCALE: 1" = 20'

FOR LEGEND SEE SHEET 3.  
ALL R/W DESCRIBED FROM LINE "A" EXCEPT AS SHOWN.  
LINE "T-3" TO BE CONSTRUCTED.



**PROFILE**  
STA. 213+00 to STA. 219+00 LINE "T-3"  
HORIZONTAL SCALE: 1" = 20'  
VERTICAL SCALE: 1" = 5'

FOR SURVEY CONTROL, SEE SHEET 5.

**ALIGN**

1285 S. Jackson Street, Suite B  
Greencastle, IN 46135

2401 Directors Row, Suite D  
Indianapolis, IN 46241

765.653.6710  
ALIGNCEC.COM

DESIGNED:	MNG	DRAWN:	DED
CHECKED:	JDM	CHECKED:	JDM

**CITY OF GREENCASTLE**

**PLAN AND PROFILE**  
**LINE "T-3"**

HORIZONTAL SCALE	BRIDGE FILE
1" = 20'	N/A
VERTICAL SCALE	DESIGNATION
1" = 5'	N/A
SURVEY BOOK	SHEETS
N/A	22 of
CONTRACT	PROJECT
N/A	NLT-3-17



CP 4008

220+00

224+00

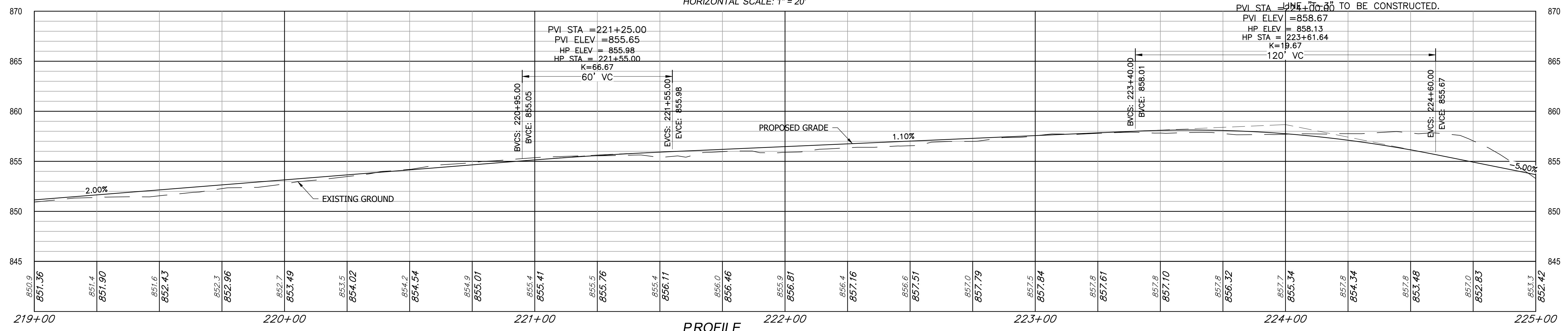
SECTION 22, T14N, R4W  
GREENCASTLE TOWNSHIP  
PUTNAM COUNTY

**CURVE DATA**  
 P.I. 221+90.03 "T-3"  
 $\Delta = 3'48''51''$   
 R = 500.00'  
 T = 16.65'  
 L = 33.28'



**PLAN**  
 STA. 201+00 to STA. 207+00 LINE "T-3"  
 HORIZONTAL SCALE: 1" = 20'

FOR LEGEND SEE SHEET 3.  
 ALL R/W DESCRIBED FROM LINE "A" EXCEPT AS SHOWN.  
 PVI STA = 221+00 TO BE CONSTRUCTED.



**PROFILE**  
 STA. 201+00 to STA. 207+00 LINE "T-3"  
 HORIZONTAL SCALE: 1" = 20'  
 VERTICAL SCALE: 1" = 5'

FOR SURVEY CONTROL, SEE SHEET 5.

**ALIGN**

1285 S. Jackson Street, Suite B  
Greencastle, IN 46135

2401 Directors Row, Suite D  
Indianapolis, IN 46241

765.653.6710  
ALIGNCEC.COM

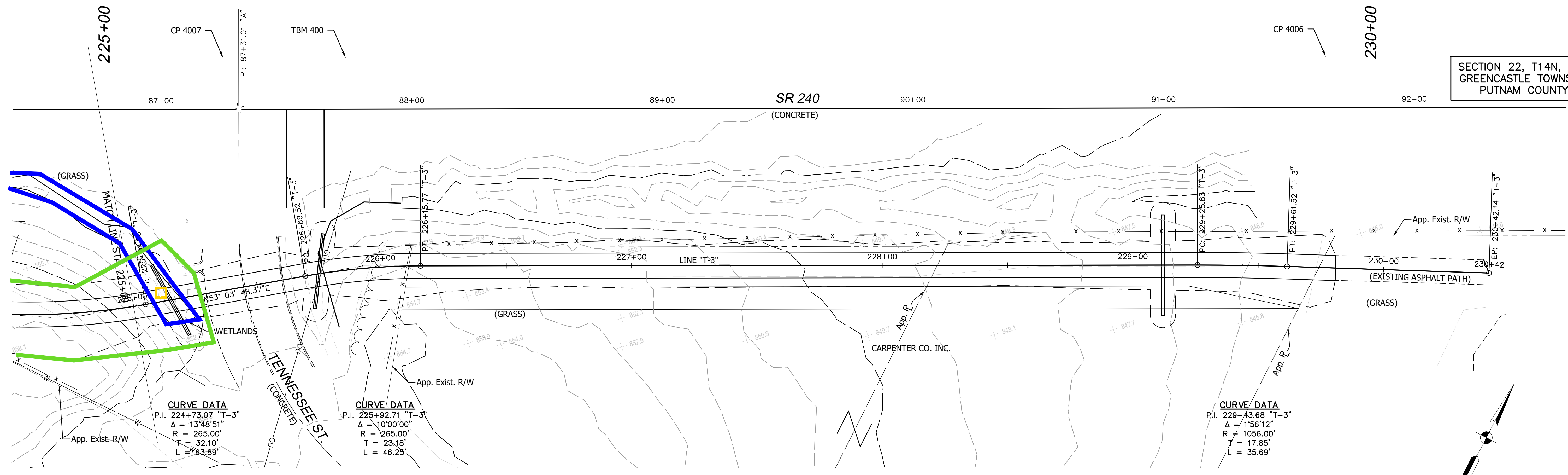
DESIGNED:	MNG	DRAWN:	DED
CHECKED:	JDM	CHECKED:	JDM

**CITY OF GREENCASTLE**

**PLAN AND PROFILE  
LINE "T-3"**

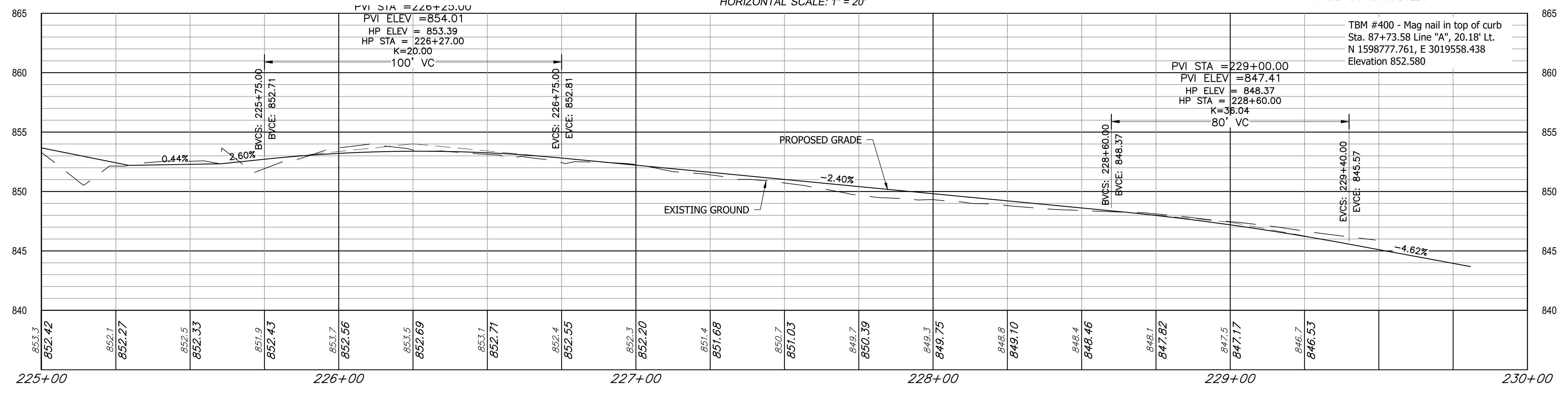
HORIZONTAL SCALE	BRIDGE FILE
1" = 20'	N/A
VERTICAL SCALE	DESIGNATION
1" = 5'	N/A
SURVEY BOOK	SHEETS
N/A	23 of
CONTRACT	PROJECT
N/A	NLT-3-17





**PLAN**  
STA. 225+00 to STA. 229+75 LINE "T-3"  
HORIZONTAL SCALE: 1" = 20'

FOR LEGEND SEE SHEET 3.  
ALL R/W DESCRIBED FROM LINE "A" EXCEPT AS SHOWN.  
LINE "T-3" TO BE CONSTRUCTED.



**PROFILE**  
STA. 225+00 to STA. 229+75 LINE "T-3"  
HORIZONTAL SCALE: 1" = 20'  
VERTICAL SCALE: 1" = 5'

FOR SURVEY CONTROL, SEE SHEET 5.

**ALIGN**  
1285 S. Jackson Street, Suite B  
Greencastle, IN 46135  
765.653.6710  
ALIGNCEC.COM

2401 Directors Row, Suite D  
Indianapolis, IN 46241

DESIGNED:	MNG	DRAWN:	DED
CHECKED:	JDM	CHECKED:	JDM

**CITY OF GREENCASTLE**

**PLAN AND PROFILE  
LINE "T-3"**

HORIZONTAL SCALE	BRIDGE FILE
1" = 20'	N/A
VERTICAL SCALE	DESIGNATION
1" = 5'	N/A
SURVEY BOOK	SHEETS
N/A	24 of
CONTRACT	PROJECT
N/A	NLT-3-17