



Indiana Department of Environmental Management Office of Water Quality Wetlands Section

Publication Date:
October 25, 2024

Closing Date:
November 15, 2024

PUBLIC NOTICE

IDEM ID Number:
2024-871-29-ENH-WQC

Corps of Engineers ID Number:
LRL-2023-00882-sjk

To all interested parties:

This letter shall serve as a formal notice of the receipt of an application for **Section 401 Water Quality Certification** by the Indiana Department of Environmental Management (IDEM). The purpose of the notice is to inform the public of active applications submitted for water quality certification under Section 401 of the Clean Water Act (33 U.S.C. § 1341) and to solicit comments and information on any impacts to water quality related to the proposed project. IDEM will evaluate whether the project complies with Indiana's water quality standards as set forth at 327 IAC 2.

- 1. Applicant:** Haggerman, Inc.
Attn: Matt Davis
10315 Allisonville Road
Fishers, IN 46037
- 2. Agent:** Civil & Environmental Consultants, Inc.
Attn: Scott Goodfellow
530 E. Ohio St., Suite G
Indianapolis, IN 46204
- 3. Project location:** Latitude 39.964628, Longitude -85.965615
Intersection of E 121st Street and Hoosier Road in Fishers, Hamilton County
- 4. Affected waterbody:** High Ditch
- 5. Project Description:** Construction of a roundabout, involving culvert installation with riprap at the inlet and outlet. Proposed additional north culvert (267LFT) to the previously permitted south culvert (112LFT) and outfall riprap structure (9LFT). Total of 418 linear feet of cumulative stream impacts for both culverts with riprap, outfall, and loss of 30 linear feet of stream due to channel straightening. Proposed mitigation is the purchase of 418 linear feet of stream credits from the Indiana DNR in-lieu fee program.
Additional information may be found online at <https://www.in.gov/idem/5474.htm>

Comment period: Any person or entity who wishes to submit comments or information relevant to the aforementioned project may do so by the closing date noted above. Only comments or information related to water quality or potential impacts of the project on water quality can be considered by IDEM in the water quality certification review process.

Public Hearing: Any person may submit a written request that a public hearing be held to consider issues related to water quality in connection with the project detailed in this notice. The request for a hearing should be submitted within the comment period to be considered timely. The request should also state the reason for the public hearing as specifically as possible to assist IDEM in determining whether a public hearing is warranted.

Questions? Additional information may be obtained from Emersyn Harriman, Project Manager, by phone at 317-409-7580 or by e-mail at eharrima@idem.in.gov. Please address all correspondence to the project manager and reference the IDEM project identification number listed on this notice. Indicate if you wish to receive a copy of IDEM's final decision. Written comments and inquiries may be forwarded to -

Indiana Department of Environmental Management
100 North Senate Avenue
MC65-42 WQS IGCN 1255
Indianapolis, Indiana 46204-2251 FAX: 317/232-8406



CITY OF FISHERS ROAD PLANS

121ST STREET AND HOOSIER ROAD ROUNDABOUT

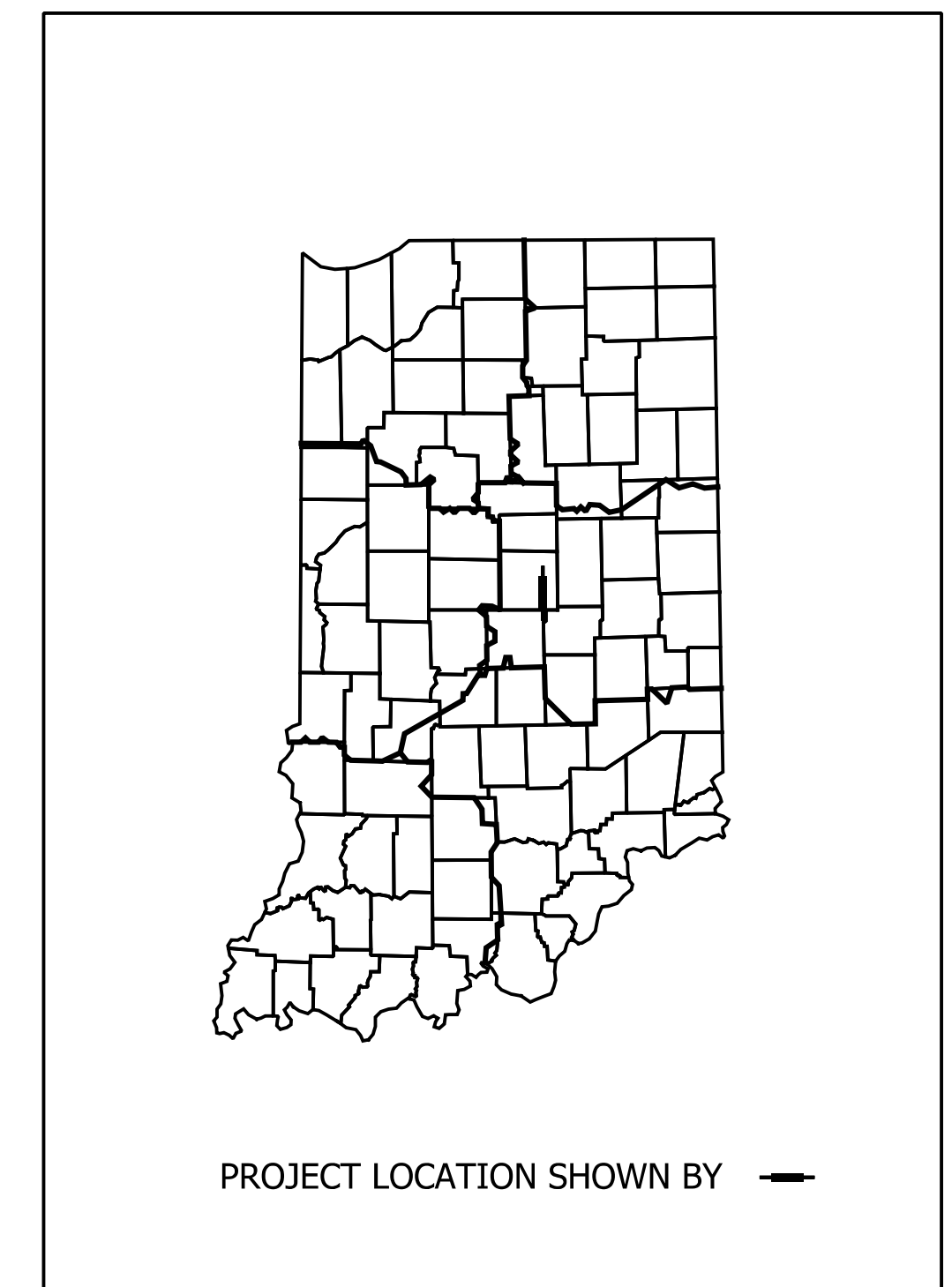
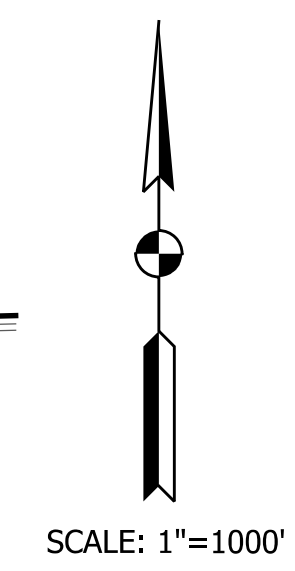
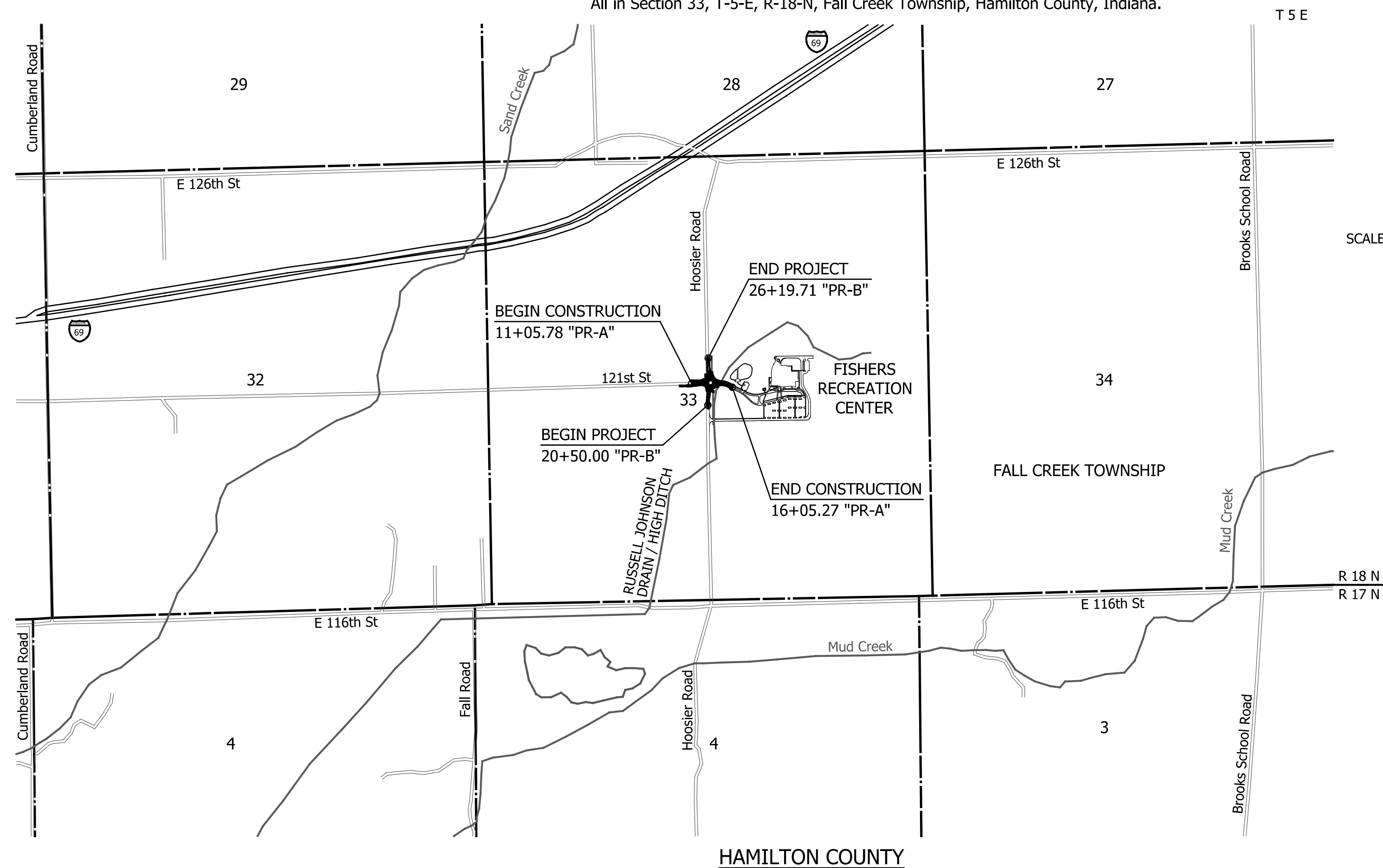
TRAFFIC DATA HOOSIER ROAD			
A.A.D.T.	2024	5,300	V.P.D.
A.A.D.T.	2044	7,800	V.P.D.
D.H.V		780	V.P.H.
DIRECTIONAL DISTRIBUTION		50	%
TRUCKS		N/A %	A.A.D.T.
		N/A %	D.H.V.

DESIGN DATA	
DESIGN SPEED	35 M.P.H.
PROJECT DESIGN CRITERIA	RECONSTRUCTION (4 R)
FUNCTIONAL CLASSIFICATION	COLLECTOR
RURAL/URBAN	URBAN
TERRAIN	LEVEL
ACCESS CONTROL	NONE

TRAFFIC DATA 121st STREET			
A.A.D.T.	2024	2,350	V.P.D.
A.A.D.T.	2044	3,500	V.P.D.
D.H.V		350	V.P.H.
DIRECTIONAL DISTRIBUTION		50	%
TRUCKS		N/A %	A.A.D.T.
		N/A %	D.H.V.

DESIGN DATA	
DESIGN SPEED	35 M.P.H.
PROJECT DESIGN CRITERIA	RECONSTRUCTION (4 R)
FUNCTIONAL CLASSIFICATION	COLLECTOR
RURAL/URBAN	URBAN
TERRAIN	LEVEL
ACCESS CONTROL	NONE

Project Description: Roundabout Construction at the intersection of Hoosier Road and 121st Street.
All in Section 33, T-5-E, R-18-N, Fall Creek Township, Hamilton County, Indiana.



LATITUDE: 39°57'53" N LONGITUDE: 85°57'57" W

- NOTES:**
- CITY OF FISHERS STANDARDS FOR PUBLIC INFRASTRUCTURE CONSTRUCTION SHALL BE INCORPORATED BY REFERENCE INTO THESE PLANS. IF CONFLICTING STANDARDS OCCUR, THE FOLLOW ORDER OF PRECEDENCE SHALL GOVERN:
1. PROJECT SPECIAL PROVISIONS
 2. INFORMATION FOR BIDDERS
 3. SPECIAL GENERAL CONDITIONS
 4. GENERAL CONDITIONS
 5. CONTRACT FORMS
 6. CONSTRUCTION PLANS
 7. CITY OF FISHERS STANDARDS, MOST RECENT
 8. INDIANA DEPARTMENT OF TRANSPORTATION STANDARD SPECIFICATIONS, MOST RECENT
 9. INDOT STANDARD DRAWINGS, MOST RECENT

NO ALTERNATE SPECIFICATIONS OR MATERIALS OR NEW MATERIALS MAY BE USED WITHOUT EXPRESS WRITTEN APPROVAL FROM THE CITY OF FISHERS PRIOR TO THE COMMENCEMENT OF WORK.

AMERICAN
STRUCTUREPOINT
INC.

9025 RIVER ROAD, SUITE 200
INDIANAPOLIS, IN 46240
TEL 317.547.5580 FAX 317.543.0270
www.structurepoint.com



PLANS PREPARED BY: American Structurepoint, Inc. (317) 547-5580
PHONE NUMBER

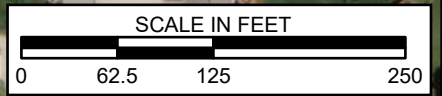
CERTIFIED BY: *Nicholas R. Murphy* 09/18/2024
DATE

BRIDGE FILE	
DESIGNATION	
SURVEY BOOK	SHEETS
CONTRACT	1 of 53
PROJECT	
2023.02149	



REFERENCES AND NOTES
 1. ESRI WORLD IMAGERY / ARCGIS MAP SERVICE: HTTP://GOTO.ARCGISONLINE.COM/MAPS/WORLD_IMAGERY, ACCESSED 9/18/2023
 2. MAP WAS DEVELOPED FOR PLANNING PURPOSES ONLY AND MAY NOT BE SUITABLE FOR CERTAIN LEGAL, ENGINEERING, OR SURVEYING PURPOSES. USERS OF THIS INFORMATION SHOULD REVIEW OR CONSULT THE PRIMARY DATA AND INFORMATION SOURCES TO ASCERTAIN THE APPROPRIATE USE OF THE INFORMATION.
 3. ALL LENGTHS AND AREAS ARE APPROXIMATE.

P:\320-000\324-472\GIS\Maps\324-472\Maps\EC01_Fishers Community Center_Delineation\324472_EC01_Fishers Community Center_Delineation.aprx 10/16/2024 8:15 AM (sgood/fellow)



LEGEND

	Approximate Site Boundary
	Intermittent Stream
	Proposed North Culvert & Riprap
	Outfall (Previously Permitted Under RGP)
	South Culvert (Previously Permitted Under RGP)

CEC
Civil & Environmental Consultants, Inc.
 530 E. Ohio Street · Suite G · Indianapolis, IN 46204
 (317) 655-7777 · (877) 746-0749
 www.cecinc.com

DRAWN BY:	STG	CHECKED BY:	RAS
DATE:	10/16/2024	SCALE:	1" = 125'

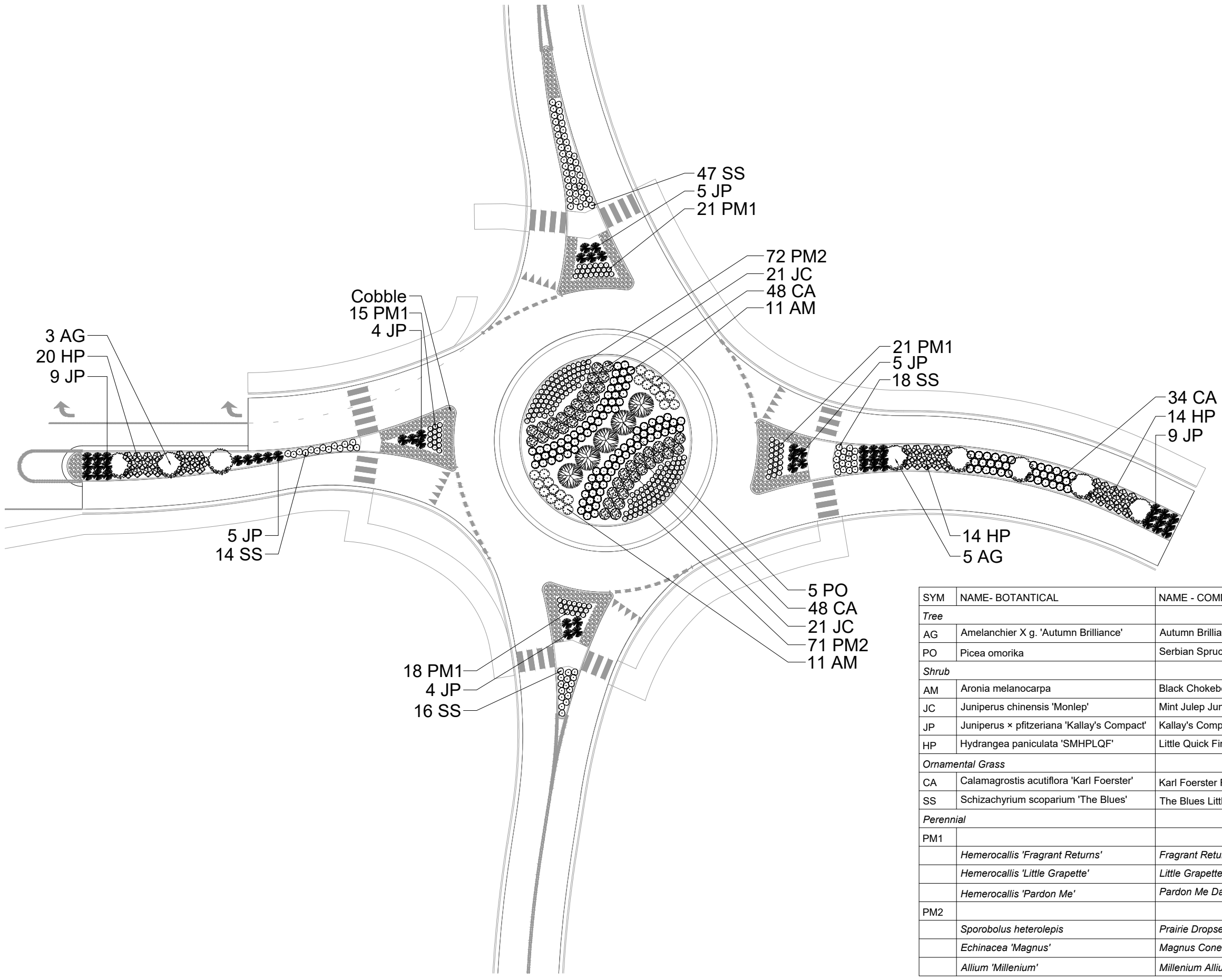
AMERICAN STRUCTUREPOINT
 121ST STREET & HOOSIER ROAD ROUNDABOUT
 HAMILTON COUNTY, INDIANA

PROPOSED IMPACTS MAP

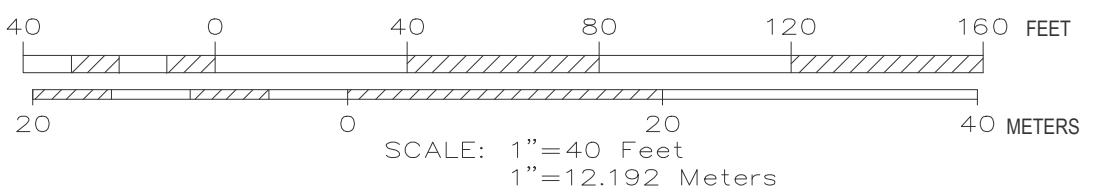
APPROVED BY:	RAS*	FIGURE NO:	1
PROJECT NO:	324-472		

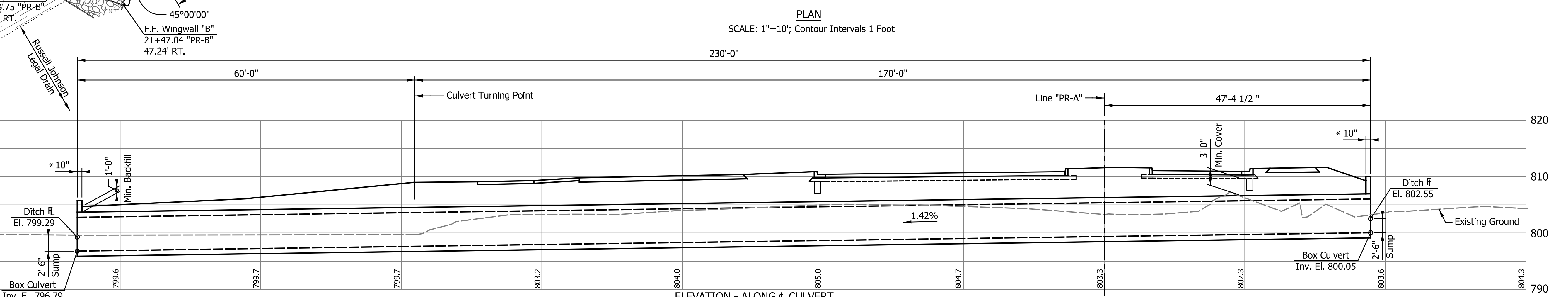
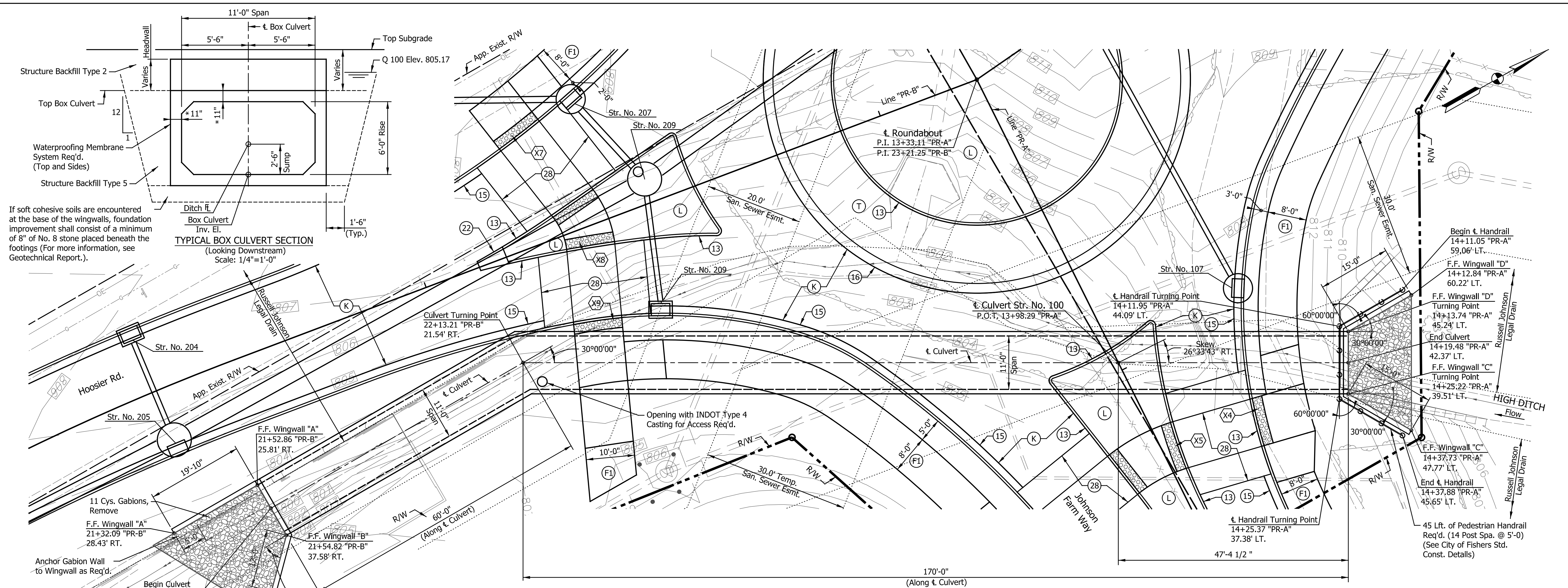
*Hand Signature on file

SHEET TITLE
121st and Hoosier RAB Landscape Plan
121st and Hoosier Rd Fishers, IN



SYM	NAME- BOTANTICAL	NAME - COMMON	QTY	SIZE	NOTES
<i>Tree</i>					
AG	Amelanchier X g. 'Autumn Brilliance'	Autumn Brilliance Serviceberry	8	2.5"	Single Stem
PO	Picea omorika	Serbian Spruce	5	8'	
<i>Shrub</i>					
AM	Aronia melanocarpa	Black Chokeberry	22	3g	
JC	Juniperus chinensis 'Monlep'	Mint Julep Juniper	42	3g	
JP	Juniperus x pfitzeriana 'Kallay's Compact'	Kallay's Compact Juniper	41	3g	
HP	Hydrangea paniculata 'SMHPLQF'	Little Quick Fire Hydrangea	48	3g	
<i>Ornamental Grass</i>					
CA	Calamagrostis acutiflora 'Karl Foerster'	Karl Foerster Feather Reed Grass	130	3g	
SS	Schizachyrium scoparium 'The Blues'	The Blues Little Bluestem Grass	95	2g	
<i>Perennial</i>					
PM1			75	1g	
	<i>Hemerocallis 'Fragrant Returns'</i>	<i>Fragrant Returns Daylily</i>	40%		
	<i>Hemerocallis 'Little Grapette'</i>	<i>Little Grapette Daylily</i>	30%		
	<i>Hemerocallis 'Pardon Me'</i>	<i>Pardon Me Daylily</i>	30%		
PM2			142	1g	
	<i>Sporobolus heterolepis</i>	<i>Prairie Dropseed</i>	30%		
	<i>Echinacea 'Magnus'</i>	<i>Magnus Coneflower</i>	40%		
	<i>Allium 'Millenium'</i>	<i>Millenium Allium</i>	30%		





- LEGEND**
- (F1) HMA for Sidewalk (See Typical Section)
 - (K) Full Depth HMA Pavement (See Typical Section)
 - (L) See Landscape Plans
 - (T) PCCP, Integral Conc. Color for Truck Apron (See Typical Section)
 - (W) Steel-Back Timber Guardrail Type A, 10'-0" Spacing (See City of Fishers Std. Const. Details)
 - (13) Modified Concrete Barrier, Curb (See Miscellaneous Details)
 - (15) Concrete Combined Curb and Gutter (See City of Fishers Std. Const. Details)
 - (16) Concrete Sloped Curb - For Roundabouts (See City of Fishers Std. Const. Details)
 - (22) Center Curb, D, Concrete (See Miscellaneous Details)
 - (28) Raised Pedestrian Crossing (See Miscellaneous Details)
 - (X) Curb Ramp, Concrete (See Spot Elevation Details)

NOTES:
 For Additional Details, see Culvert Details Next Sheet.
 *Indicates Dimension to be determined by Precast Unit Manufacturer.
 Hatch Areas indicates Limits of Riprap or Geotextiles. (For Quantities and Type, see Construction Details)
 Contractor to field verify all existing utilities and report any discrepancies to the Engineer.

DESIGN DATA
 LIVE LOAD: Designed for HL-93 loading, and sidewalk live load in accordance with AASHTO LRFD Bridge Design Specifications, Ninth Edition, 2020.
 Reinforcing Steel, $F_y = 60,000$ psi
 Concrete Class B, $f'_c = 3,000$ psi
 Concrete Class A, $f'_c = 3,500$ psi

PRECAST CONCRETE BOX CULVERT
 Johnson Farm Way Over High Ditch
 1 SPAN: 11'-0" RISE: 6'-0" SKEW: 26°33'43" RT.

DATE	REVISION

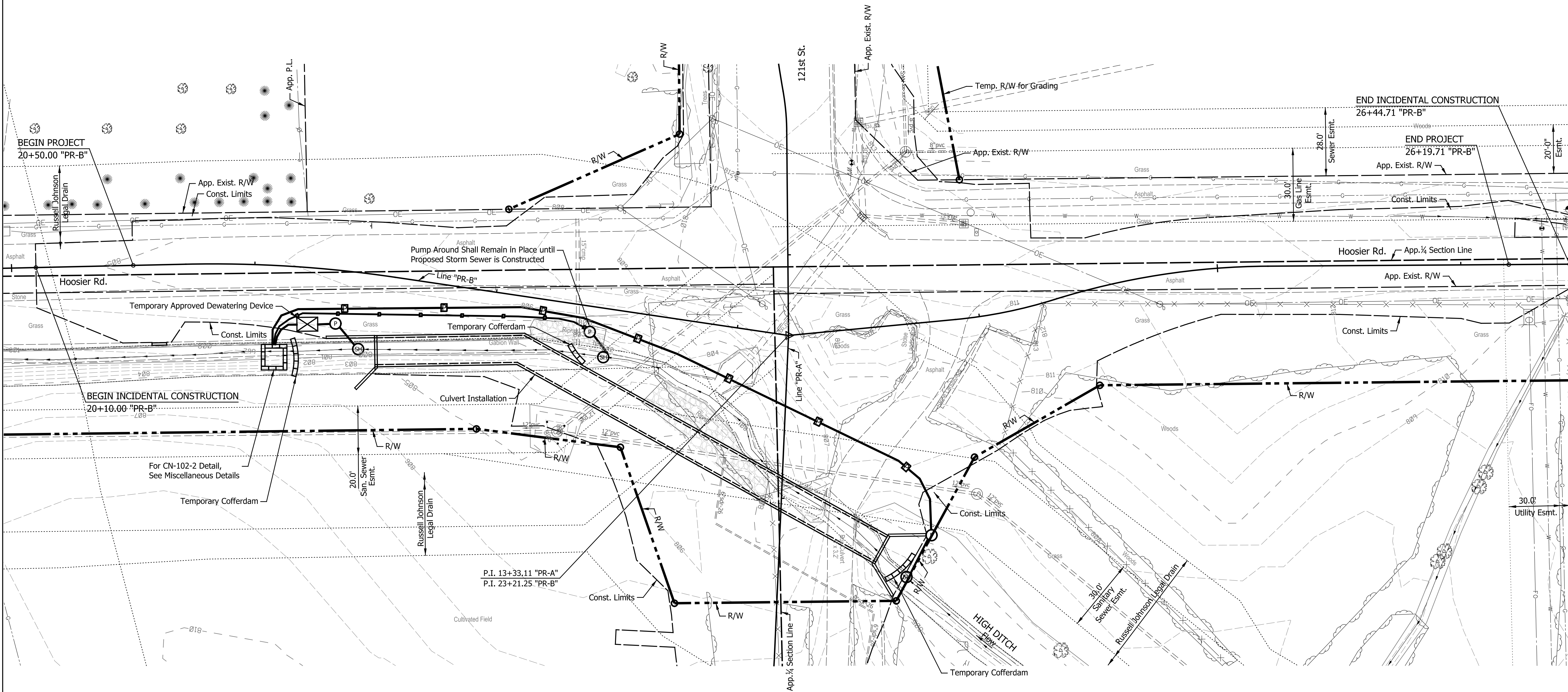


RECOMMENDED FOR APPROVAL: *[Signature]*
 DESIGN ENGINEER: *[Signature]* 09/18/2024 DATE

DESIGNED: ASV DRAWN: RJC
 CHECKED: NRM CHECKED: NRM

CITY OF FISHERS
CULVERT DETAILS
STRUCTURE NO. 100

HORIZONTAL SCALE	BRIDGE FILE
AS NOTED	
VERTICAL SCALE	DESIGNATION
AS NOTED	
SURVEY BOOK	SHEETS
	15 of 53
CONTRACT	PROJECT
	2023.02149



LEGEND

- Temporary Inlet Protection
- Temporary Silt Fence
- Proposed Ditch Flow Line

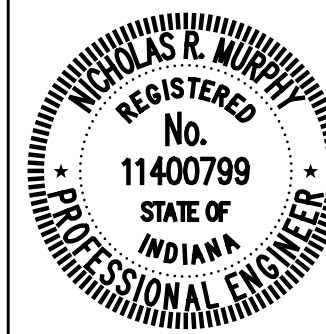
NOTES:

1. All Areas Left Undisturbed for More Than 7 Days Shall be Temporarily Seeded and Temporarily Mulched, Unless Shown Otherwise, or as Directed by the Engineer. See the Special Provisions.
2. Temporary Inlet Protection shall be per the approved INDOT Standard Drawings.

NOTES:

- Pump Around shall remain in place as required until Proposed Storm Sewer installation due to Existing Storm Sewer outlet being cut off from High Ditch by Culvert Installation. See Site Plans for Erosion Control Measures east of Str. 100.

DATE	REVISION



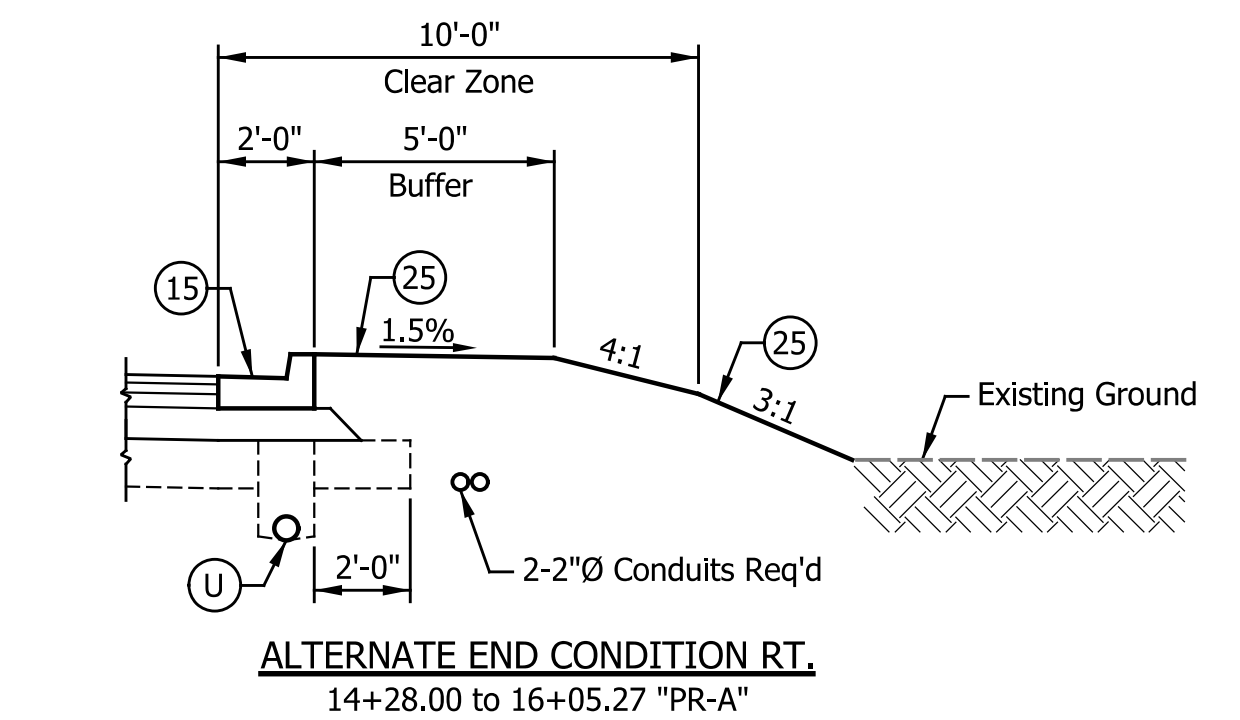
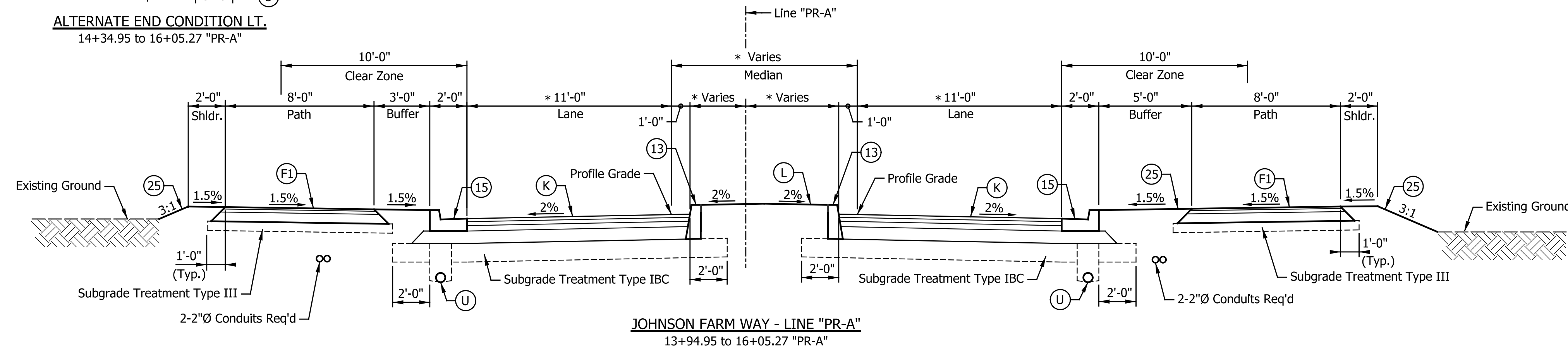
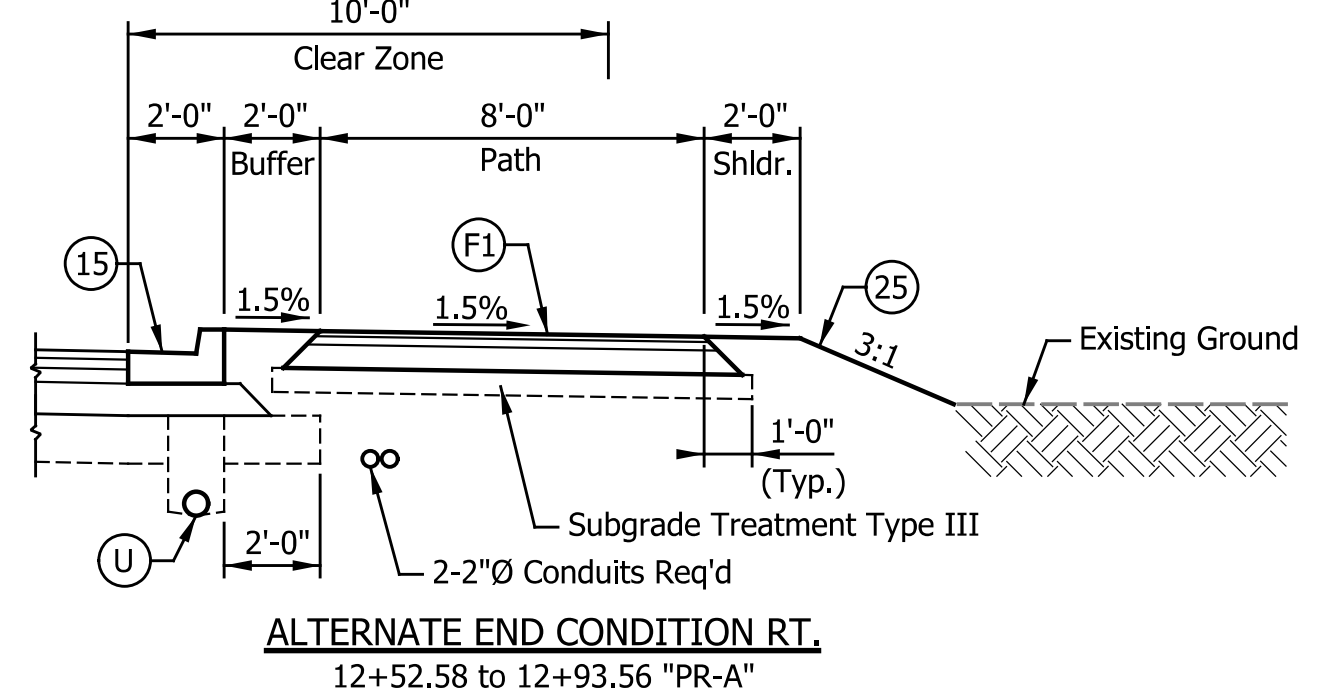
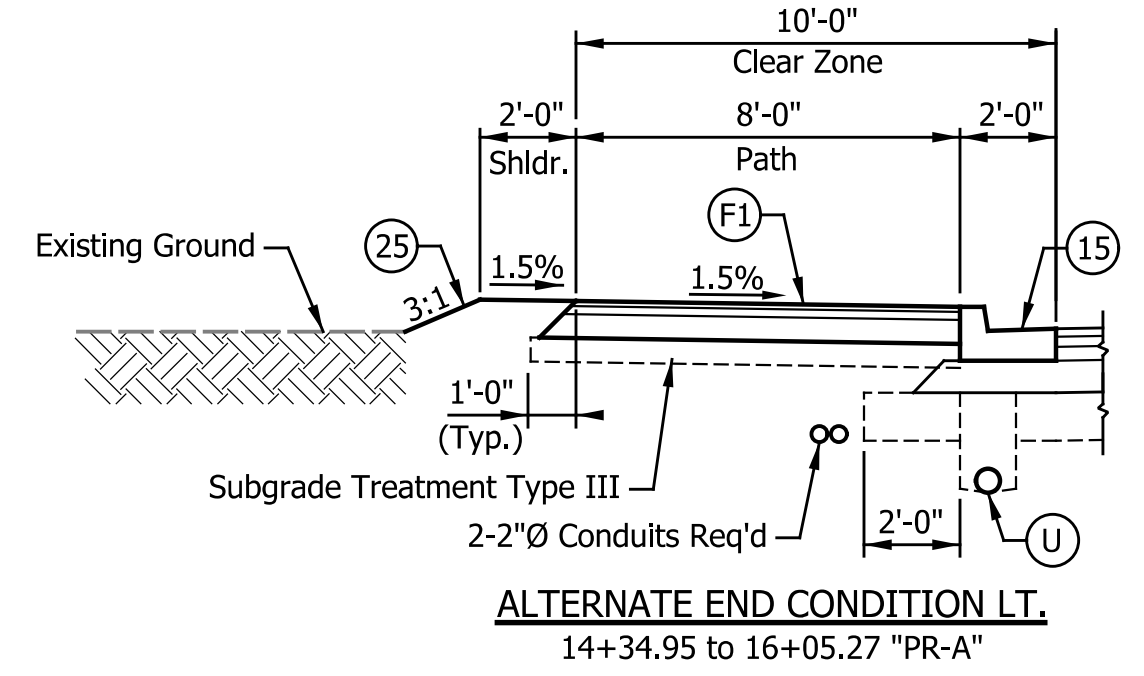
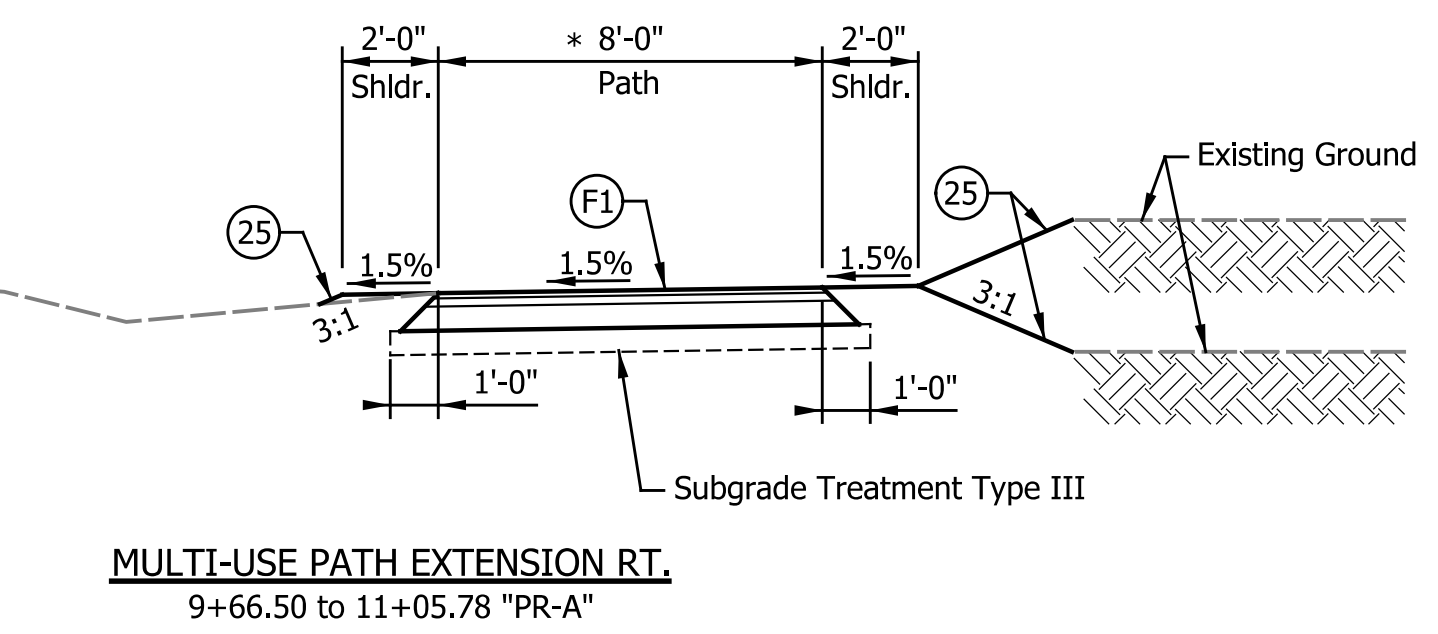
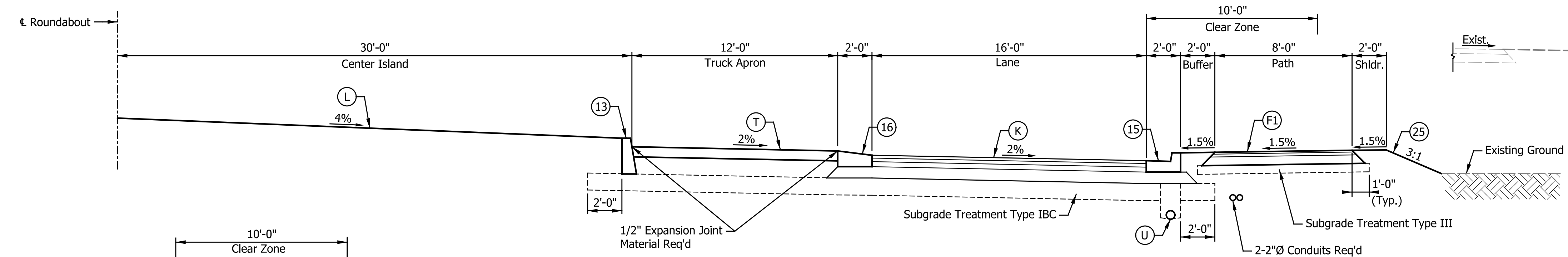
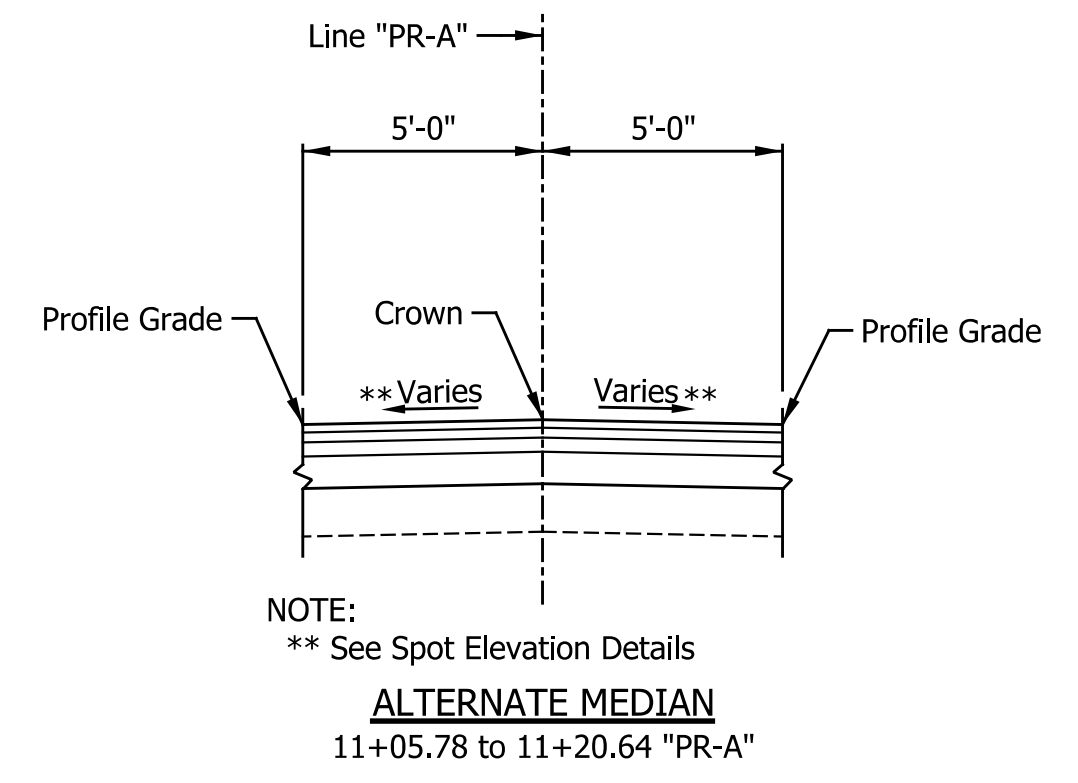
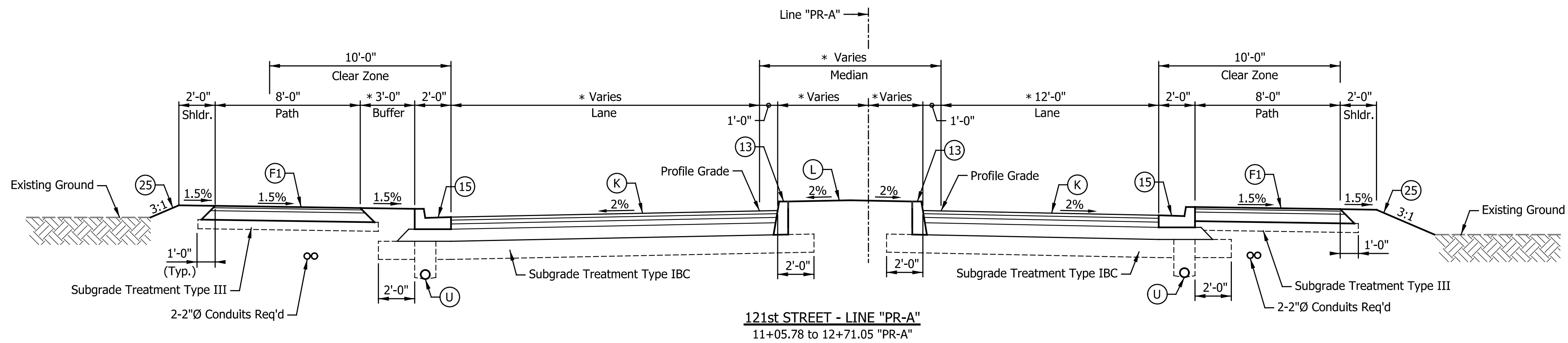
RECOMMENDED FOR APPROVAL	<i>NRM</i>	<i>ASV</i>	DESIGN ENGINEER	09/18/2024	DATE
DESIGNED:	ASV	DRAWN:	RJC		
CHECKED:	NRM	CHECKED:	NRM		

CITY OF FISHERS

EROSION CONTROL DETAILS

PHASE I - LINE "PR-B"

HORIZONTAL SCALE	BRIDGE FILE
1"=20'	
VERTICAL SCALE	DESIGNATION
N/A	
SURVEY BOOK	SHEETS
	23 of 53
CONTRACT	PROJECT
	2023.02149

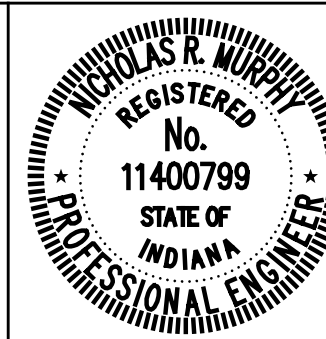


LEGEND

- (F1) HMA for Sidewalk, Consisting of:
140 lbs/sys HMA Surface, Type B, on
220 lbs/sys HMA Inter., Type B, on
6" Compacted Aggregate, No. 53
- (K) Full Depth HMA Pavement, Consisting of:
220 lbs/sys QC/QA-HMA, 2, 64, Surface, 9.5 mm, on
275 lbs/sys QC/QA-HMA, 2, 64, Intermediate, 19.0 mm, on
385 lbs/sys QC/QA-HMA, 2, 64, Base, 25.0 mm, on
8 in. Compacted Aggregate, No. 53
- (L) See Landscape Plans
- (T) PCCP for Truck Apron Consisting of:
7 in. PCCP, on
12 in. Compacted Aggregate, No. 53
(See City of Fishers Std. Const. Details)
- (U) Pipe, Underdrain
- (13) Modified Concrete Barrier, Curb
(See Miscellaneous Details)
- (15) Concrete Combined Curb and Gutter
(See City of Fishers Std. Const. Details)
- (16) Concrete Sloped Curb - For Roundabouts
(See City of Fishers Std. Const. Details)
- (25) Seed Mixture, U

NOTES:
* Width Varies, See Construction Details
Roundabout Truck Aprons to be Stamped & Colored
per City of Fishers Standard Construction Details.

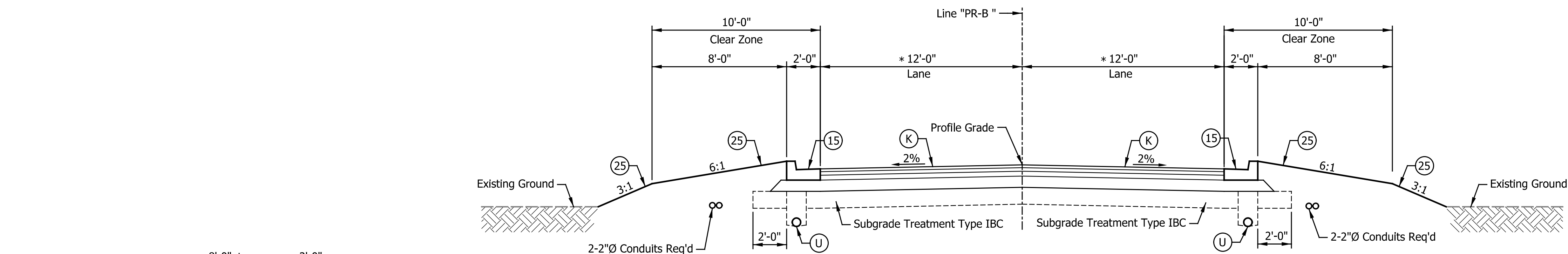
DATE	REVISION



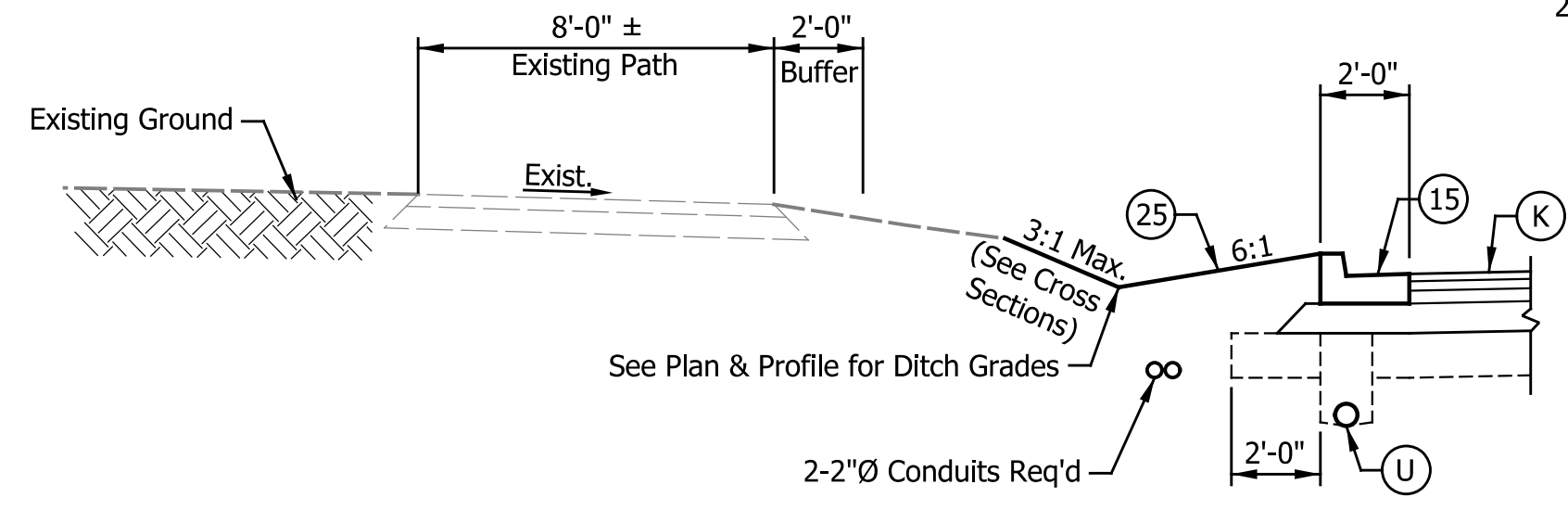
RECOMMENDED FOR APPROVAL: *NRM*
DESIGN ENGINEER: *NRM* DATE: 9/18/2024
DESIGNED: ASV DRAWN: RJC
CHECKED: NRM CHECKED: NRM

CITY OF FISHERS
TYPICAL CROSS SECTIONS
LINE "PR-A" AND ROUNDABOUT

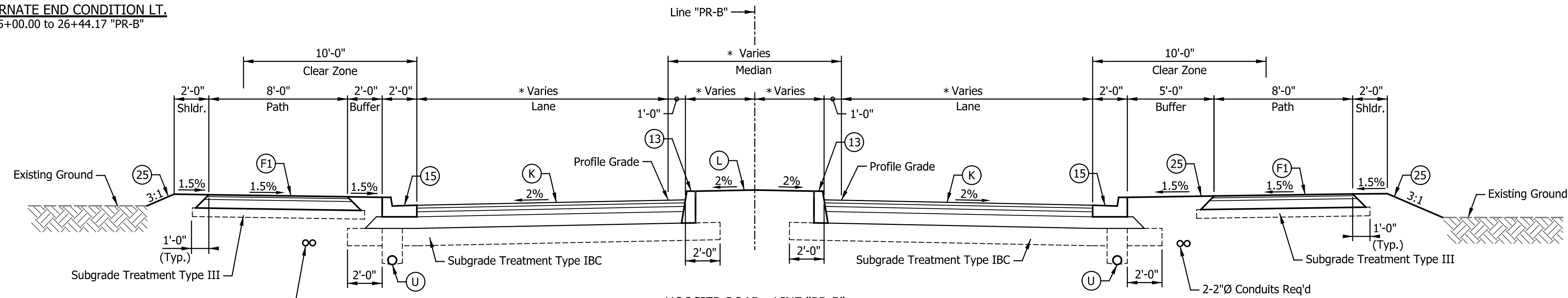
HORIZONTAL SCALE	BRIDGE FILE
1/4"=1'-0"	
VERTICAL SCALE	DESIGNATION
1/4"=1'-0"	
SURVEY BOOK	SHEETS
	3 of 53
CONTRACT	PROJECT
	2023.02149



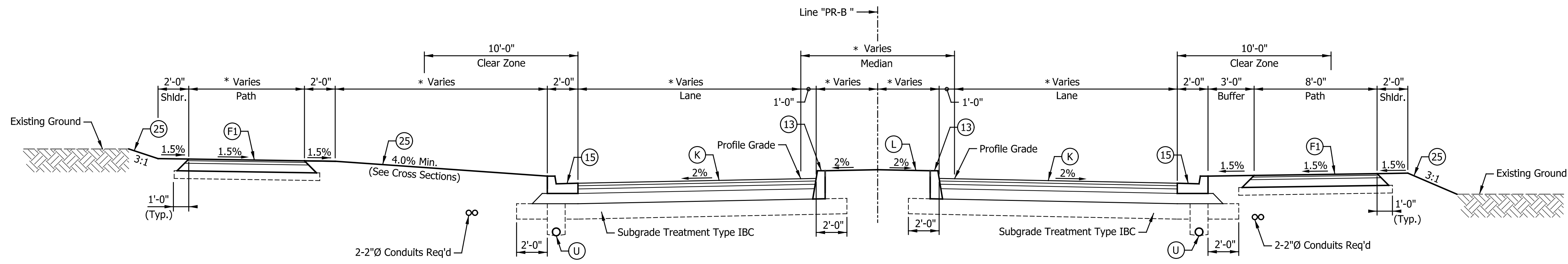
HOOSIER ROAD - LINE "PR-B"
 20+50.00 to 22+11.72 "PR-B"
 24+62.10 to 26+19.71 "PR-B"



ALTERNATE END CONDITION LT.
 25+00.00 to 26+44.17 "PR-B"



HOOSIER ROAD - LINE "PR-B"
 22+11.72 to 22+59.27 "PR-B"



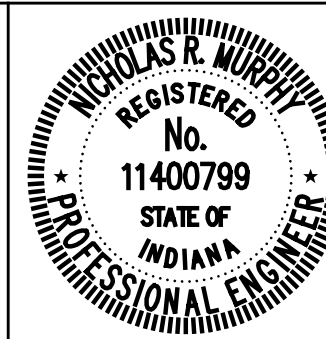
HOOSIER ROAD - LINE "PR-B"
 23+83.28 to 24+62.10 "PR-B"

LEGEND

- (F1) HMA for Sidewalk, Consisting of:
140 lbs/sys HMA Surface, Type B, on
220 lbs/sys HMA Inter., Type B, on
6" Compacted Aggregate, No. 53
- (K) Full Depth HMA Pavement, Consisting of:
220 lbs/sys QC/QA-HMA, 2, 64, Surface, 9.5 mm, on
275 lbs/sys QC/QA-HMA, 2, 64, Intermediate, 19.0 mm, on
385 lbs/sys QC/QA-HMA, 2, 64, Base, 25.0 mm, on
8 in. Compacted Aggregate, No. 53
- (L) See Landscape Plans
- (T) PCCP for Truck Apron Consisting of:
7 in. PCCP, on
12 in. Compacted Aggregate, No. 53
(See City of Fishers Std. Const. Details)
- (U) Pipe, Underdrain
- (13) Modified Concrete Barrier, Curb
(See Miscellaneous Details)
- (15) Concrete Combined Curb and Gutter
(See City of Fishers Std. Const. Details)
- (16) Concrete Sloped Curb - For Roundabouts
(See City of Fishers Std. Const. Details)
- (25) Seed Mixture, U

NOTE:
* Width Varies, See Construction Details

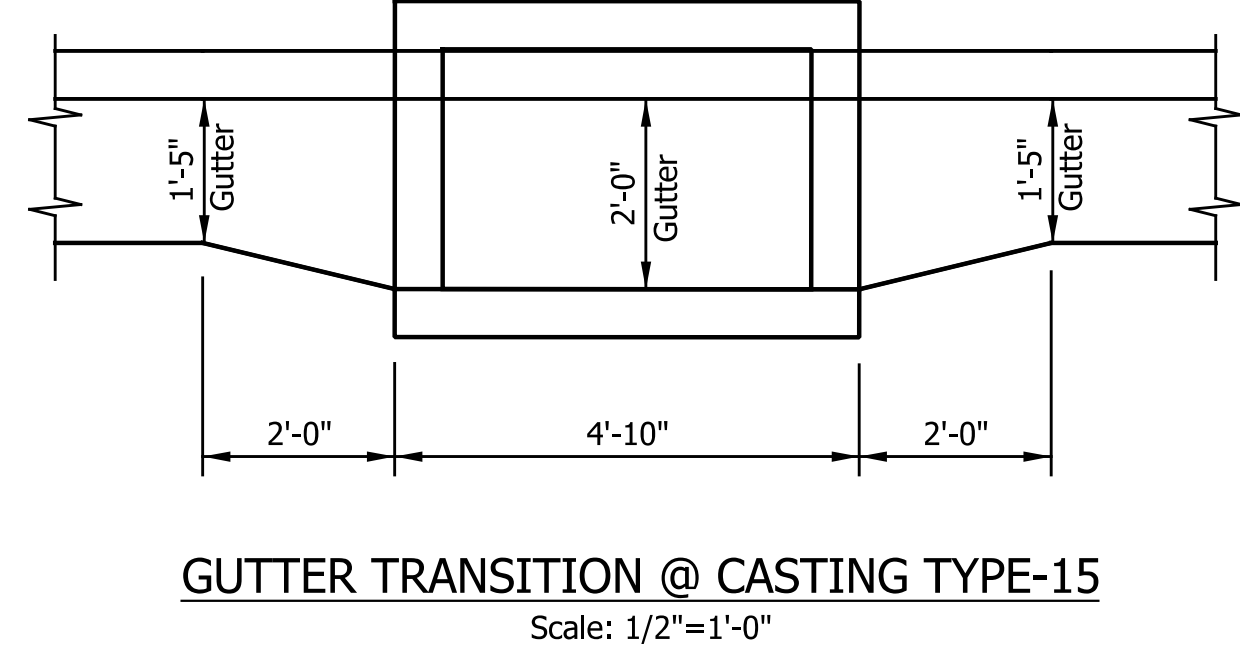
DATE	REVISION



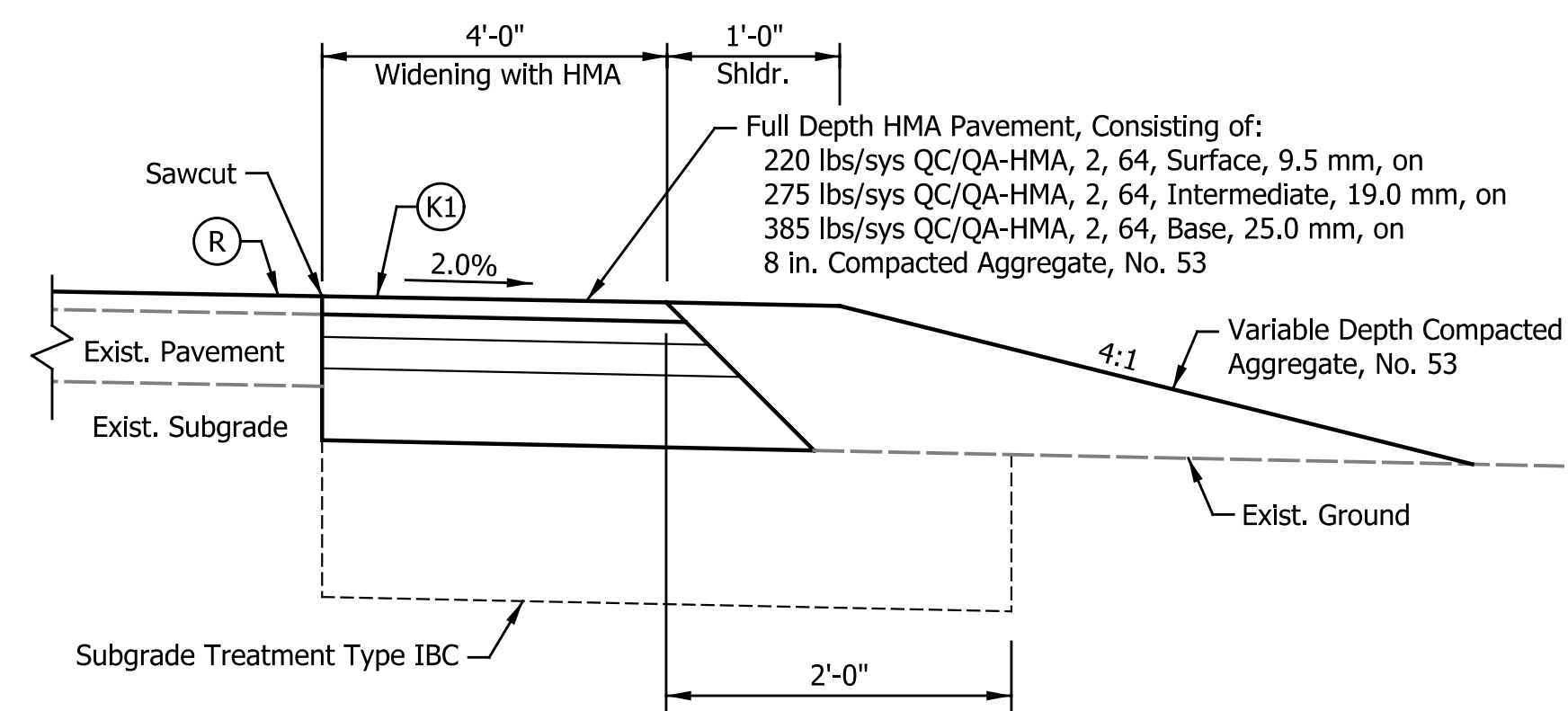
RECOMMENDED FOR APPROVAL: *NRM*
 DESIGN ENGINEER: *NRM* DATE: 9/18/2024
 DESIGNED: ASV DRAWN: RJC
 CHECKED: NRM CHECKED: NRM

CITY OF FISHERS
TYPICAL CROSS SECTIONS
 LINE "PR-B"

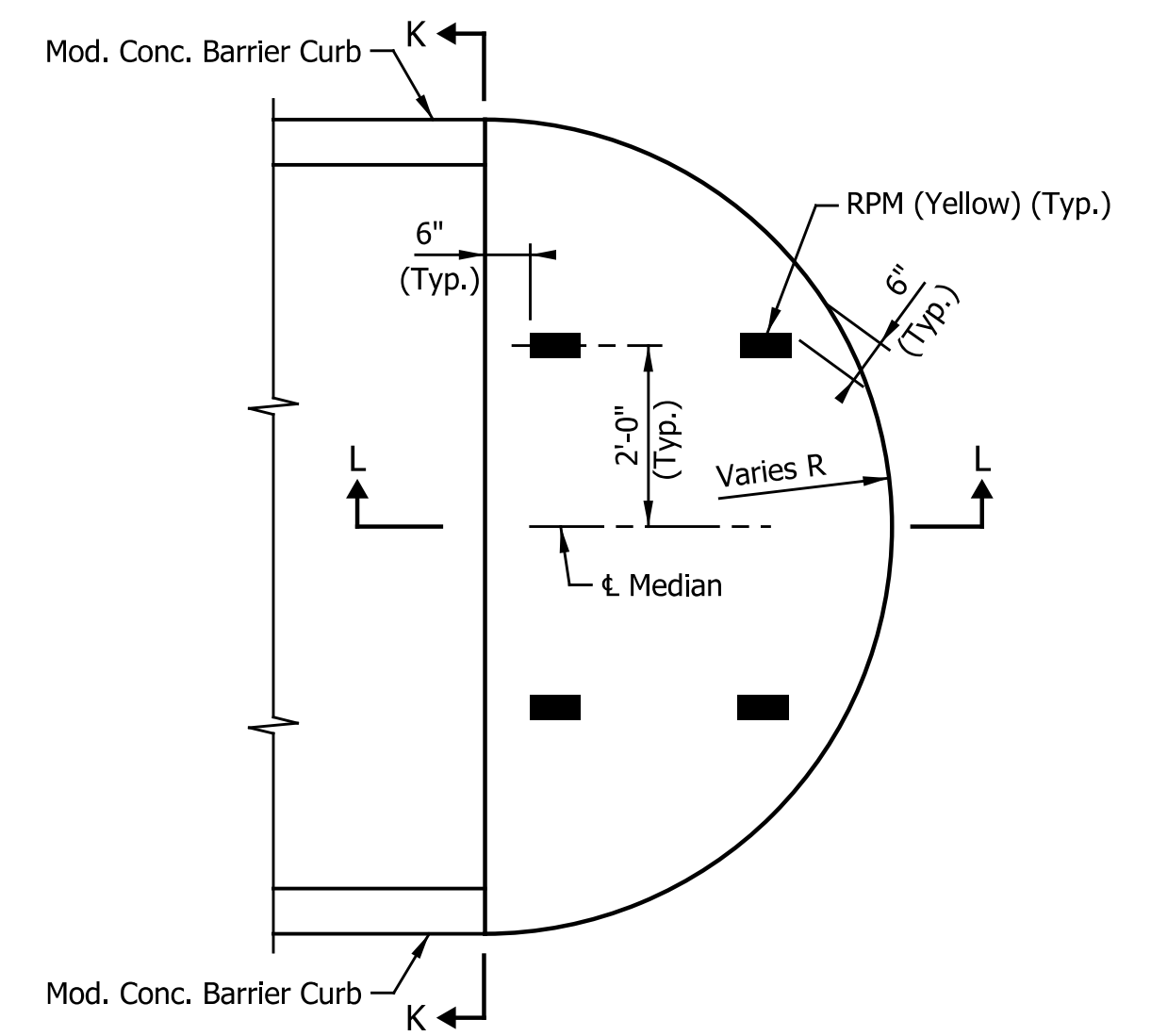
HORIZONTAL SCALE	BRIDGE FILE
1/4"=1'-0"	
VERTICAL SCALE	DESIGNATION
1/4"=1'-0"	
SURVEY BOOK	SHEETS
	4 of 53
CONTRACT	PROJECT
	2023.02149



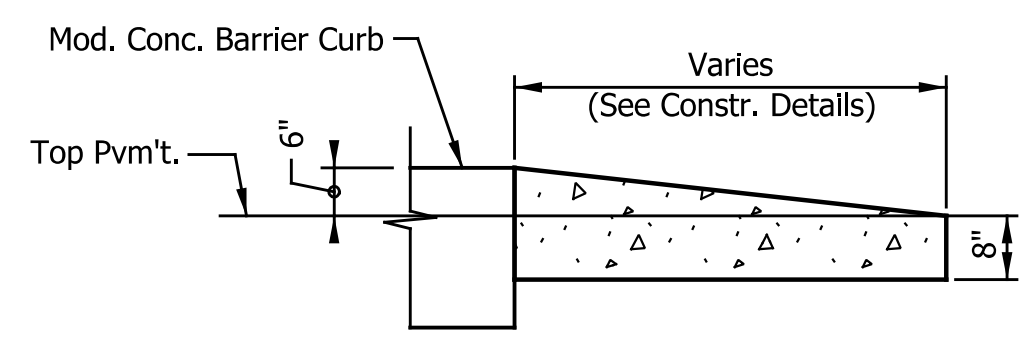
GUTTER TRANSITION @ CASTING TYPE-15
Scale: 1/2"=1'-0"



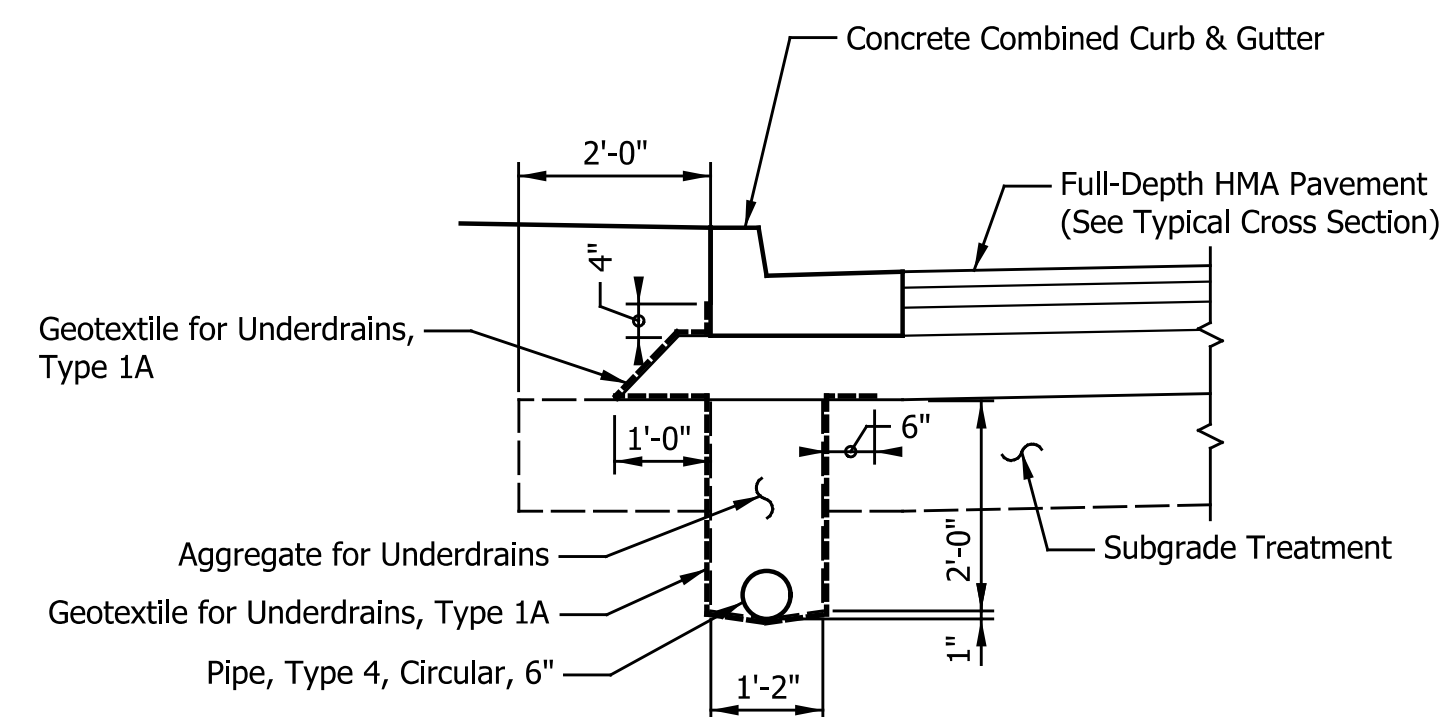
PAVEMENT WIDENING DETAIL
No Scale



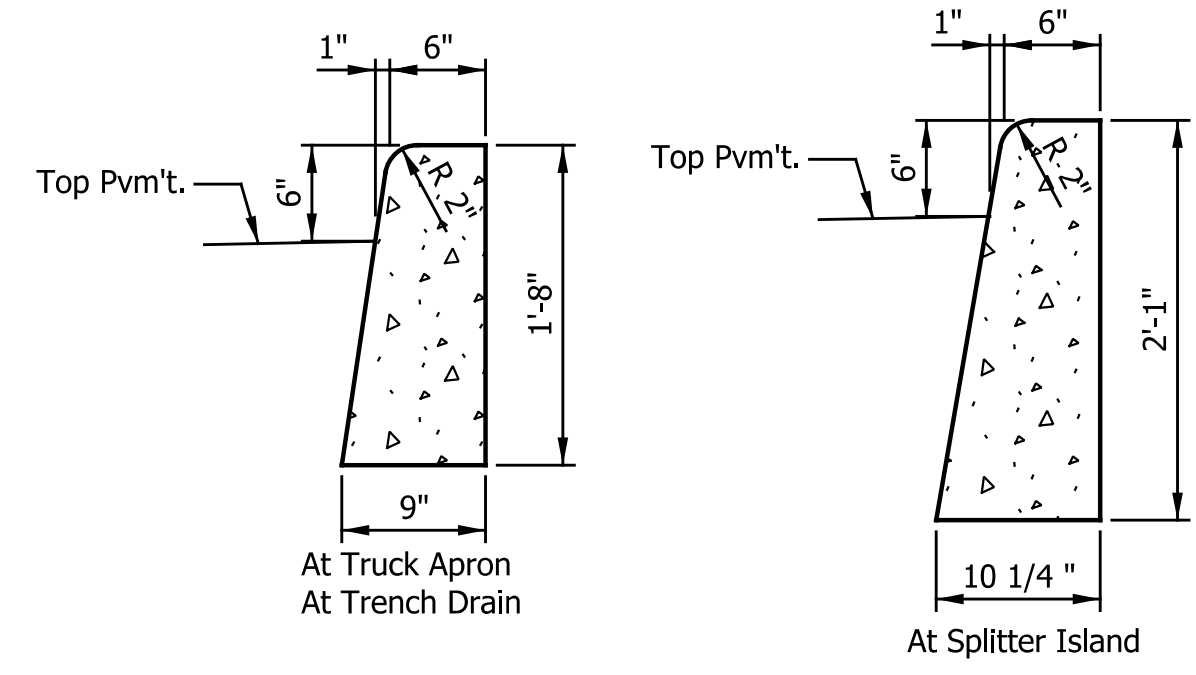
PLAN - SHOWING CIRCULAR NOSE



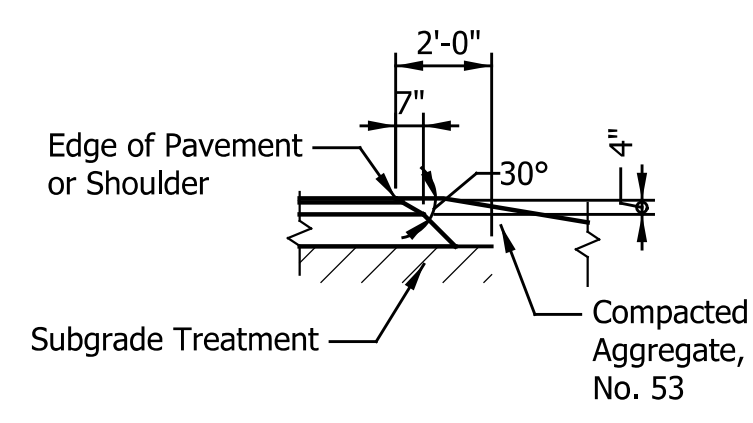
SECTION L-L



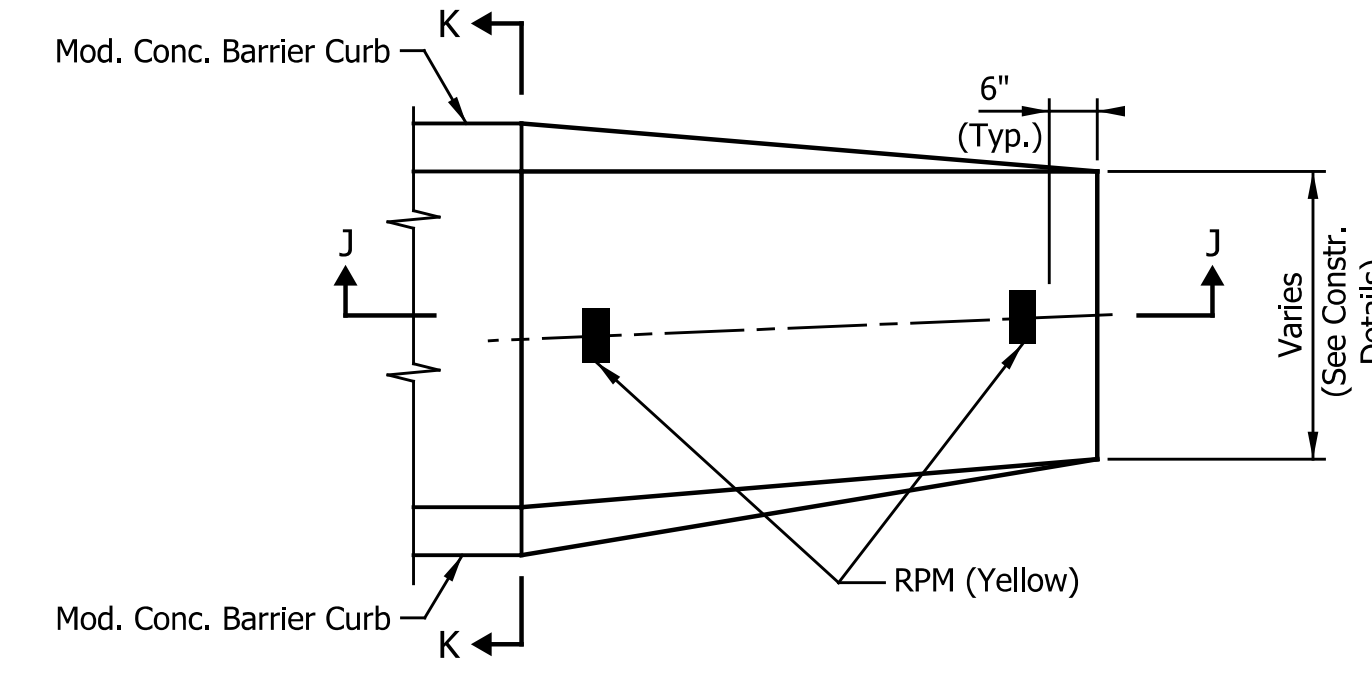
UNDERDRAIN DETAIL - CONCRETE CURB & GUTTER
Scale: 1/2"=1'-0"



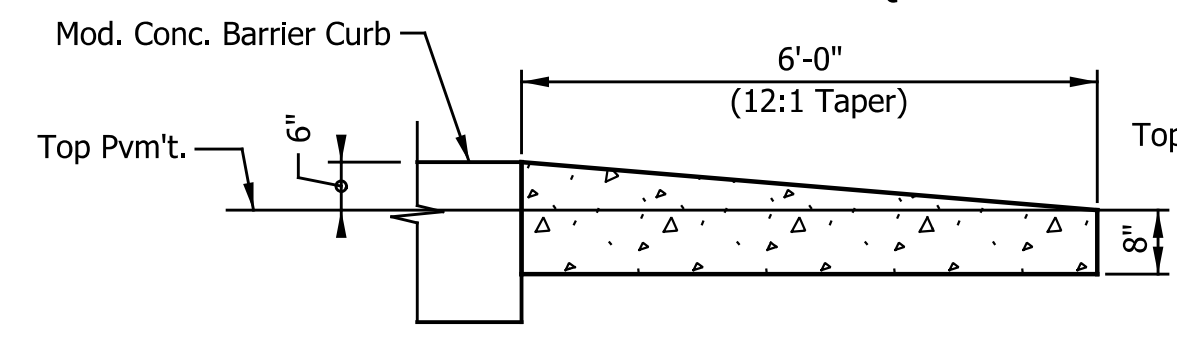
13 MODIFIED CONCRETE BARRIER CURB DETAIL
Scale: 1"=1'-0"



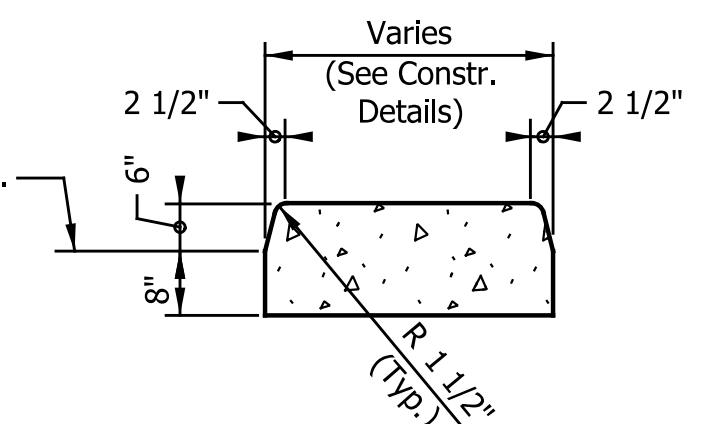
HMA PAVEMENT SAFETY EDGE
No Scale



PLAN - SHOWING SQUARE NOSE



SECTION J-J



SECTION K-K

MODIFIED CENTER CURB TYPE D DETAILS

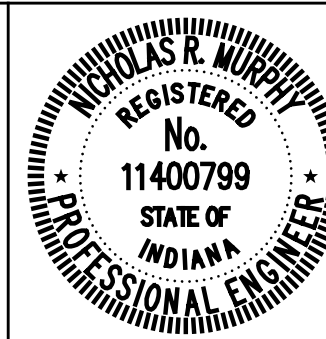
Scale: 1/2" = 1'-0"
(See City of Fishers Raised Pavement Marker Detail for more Information)

- D** HMA For Approaches, Type B
165 lbs/sys HMA Surface Type B, on
275 lbs/sys HMA Intermediate Type B, on
6" Compacted Aggregate No. 53, on
Subgrade Treatment Type II
- F** Sidewalk, Concrete, 4 in.
- F1** HMA for Sidewalk
(See Typical Section)
- L** See Landscape Plans
- K** Full Depth HMA Pavement
(See Typical Section)
- K1** Widening with HMA
(Full Depth HMA Pavement)
- R** 220 lbs/sys QC/QA-HMA, 2, 64, Surface, 9.5 mm, on
Milling Asphalt, 2 in.

LEGEND

- T** PCCP, Integral Conc. Color for Truck Apron
(See Typical Section)
- W** Steel-Back Timber Guardrail Type A, 10'-0" Spacing
(See City of Fishers Std. Const. Details)
- 13** Modified Concrete Barrier, Curb
(See Miscellaneous Details)
- 15** Concrete Combined Curb and Gutter
(See City of Fishers Std. Const. Details)
- 16** Concrete Sloped Curb - For Roundabouts
(See City of Fishers Std. Const. Details)
- 22** Center Curb, D, Concrete
(See Miscellaneous Details)
- 28** Modified Raised Pedestrian Crossing
(6' Transition, 10' Raised Cross Walk & 6' Transition)
(See City of Fishers Std. Const. Details)
- X** Curb Ramp, Concrete
(See Spot Elevation Details)

DATE	REVISION



RECOMMENDED FOR APPROVAL	<i>[Signature]</i>	DESIGN ENGINEER	09/18/2024
DESIGNED:	ASV	DRAWN:	RJC
CHECKED:	NRM	CHECKED:	NRM

CITY OF FISHERS

MISCELLANEOUS DETAILS

HORIZONTAL SCALE	BRIDGE FILE
AS NOTED	
VERTICAL SCALE	DESIGNATION
N/A	
SURVEY BOOK	SHEETS
	5 of 53
CONTRACT	PROJECT
	2023.02149

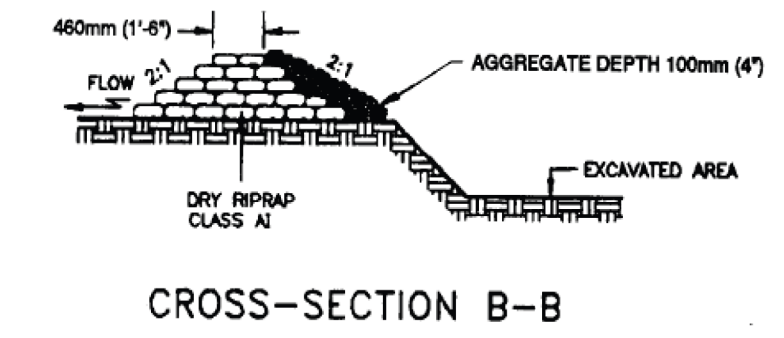
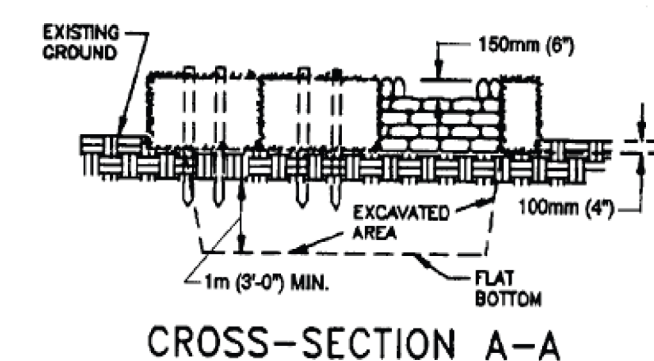
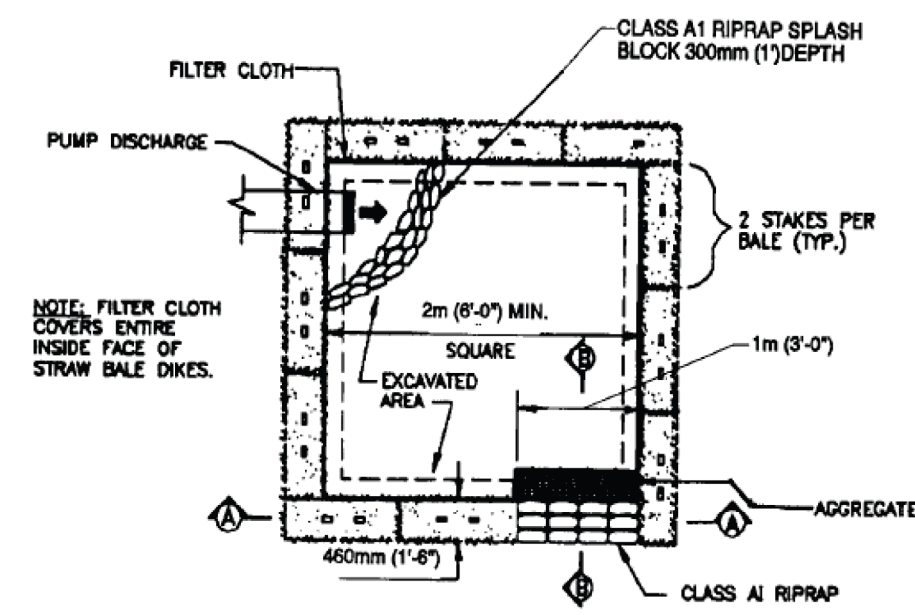
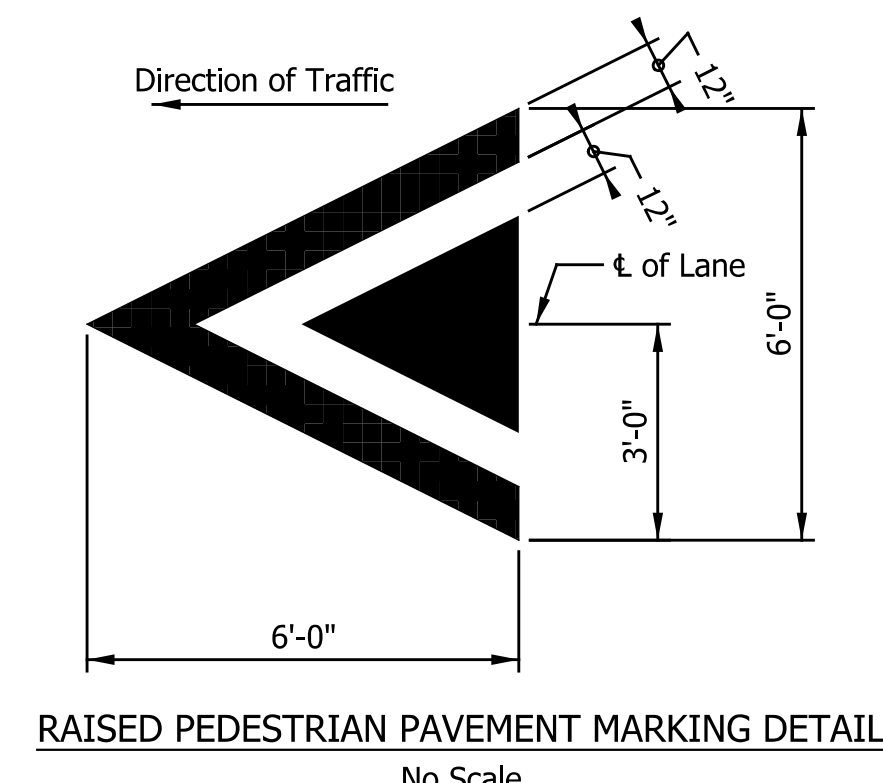
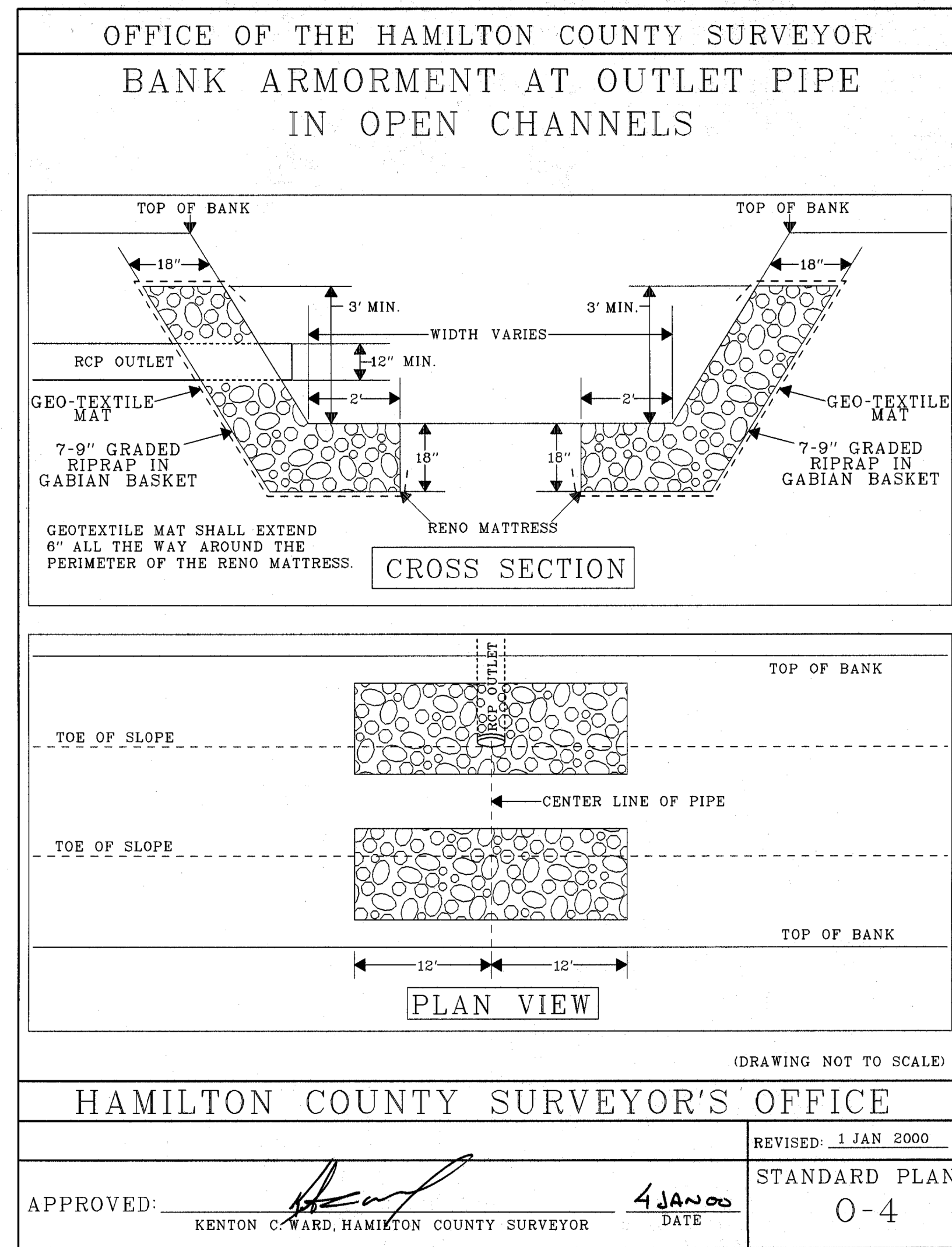
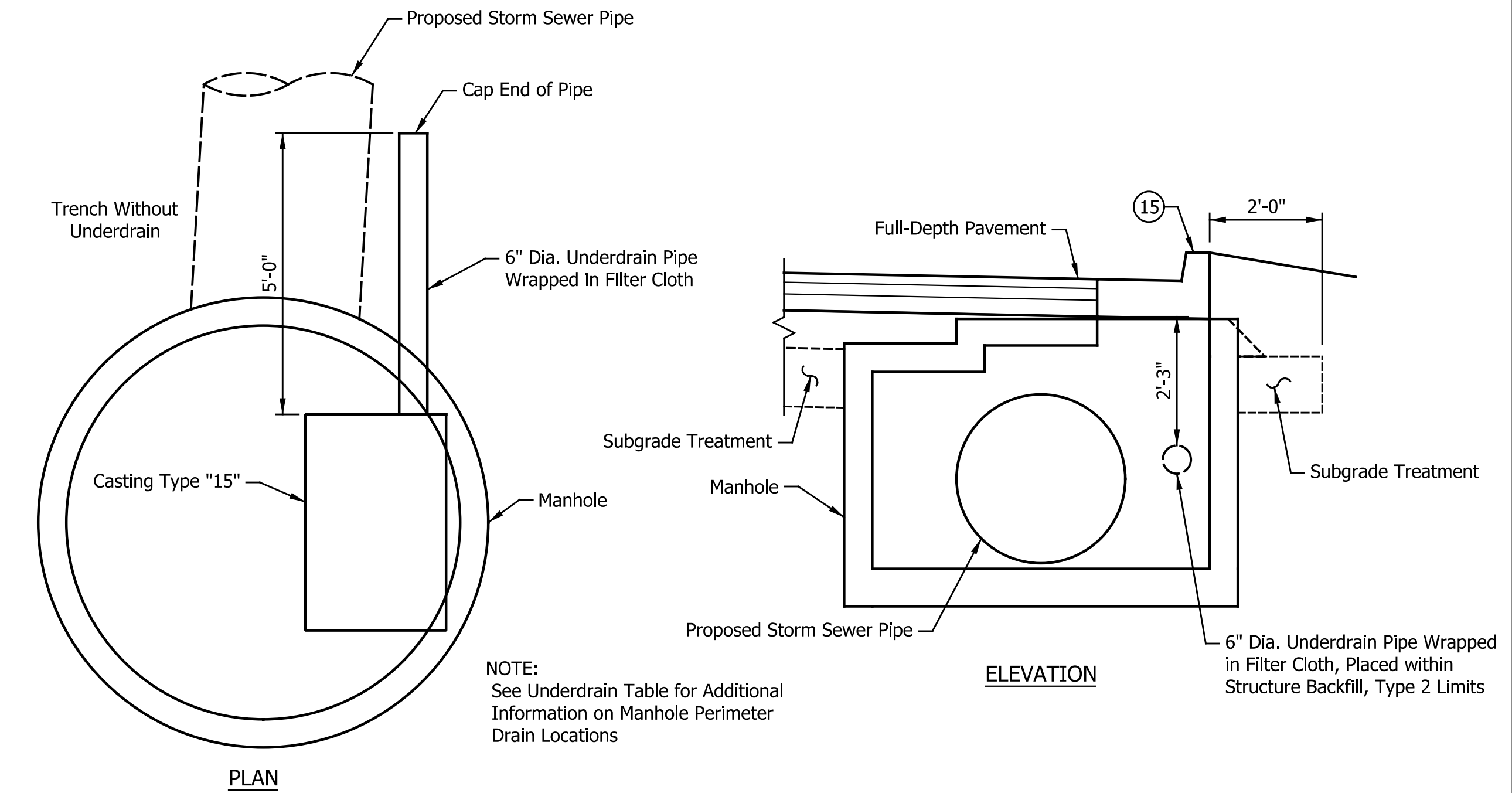
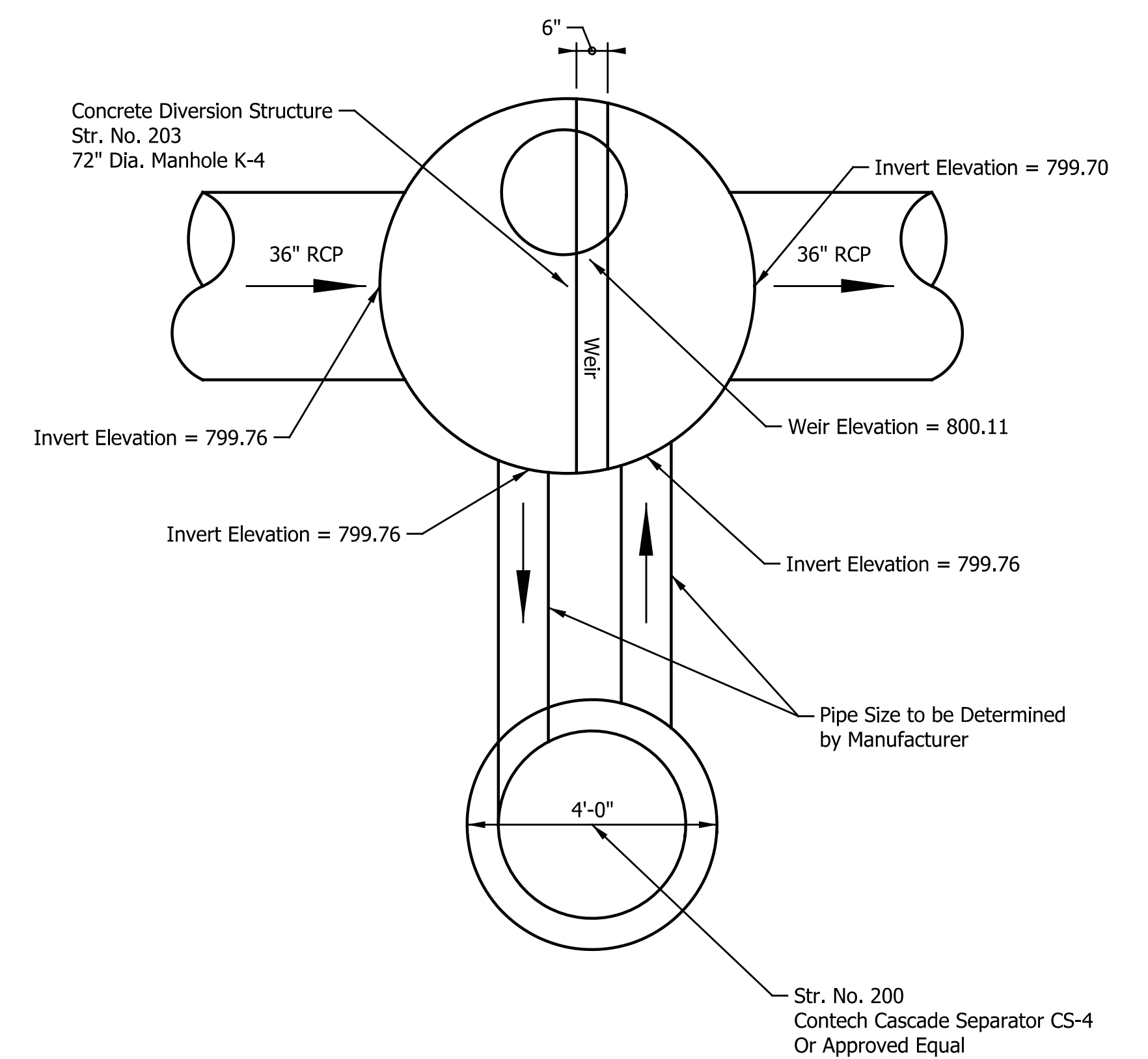


Figure CN-102-C
Straw Bale/Silt Fence Pit



- #### LEGEND
- (D) HMA For Approaches, Type B
 - (L) See Landscape Plans
 - (T) PCCP, Integral Conc. Color for Truck Apron (See Typical Section)
 - (16) Concrete Sloped Curb - For Roundabouts (See City of Fishers Std. Const. Details)
 - (17) 165 lbs/sys HMA Surface Type B, on 275 lbs/sys HMA Intermediate Type B, on 6" Compacted Aggregate No. 53, on Subgrade Treatment Type II
 - (K) Full Depth HMA Pavement (See Typical Section)
 - (W) Steel-Back Timber Guardrail Type A, 10'-0" Spacing (See City of Fishers Std. Const. Details)
 - (22) Center Curb, D, Concrete (See Miscellaneous Details)
 - (F) Sidewalk, Concrete, 4 in.
 - (K1) Widening with HMA (Full Depth HMA Pavement)
 - (13) Modified Concrete Barrier, Curb (See Miscellaneous Details)
 - (28) Modified Raised Pedestrian Crossing (6' Transition, 10' Raised Cross Walk & 6' Transition) (See City of Fishers Std. Const. Details)
 - (F1) HMA for Sidewalk (See Typical Section)
 - (R) 220 lbs/sys QC/QA-HMA, 2, 64, Surface, 9.5 mm, on Milling Asphalt, 2 in.
 - (15) Concrete Combined Curb and Gutter (See City of Fishers Std. Const. Details)
 - (X) Curb Ramp, Concrete (See Spot Elevation Details)

DATE	REVISION



RECOMMENDED FOR APPROVAL: 09/18/2024
DESIGN ENGINEER DATE

DESIGNED: ASV DRAWN: RJC
CHECKED: NRM CHECKED: NRM

CITY OF FISHERS

MISCELLANEOUS DETAILS

HORIZONTAL SCALE	BRIDGE FILE
AS NOTED	
VERTICAL SCALE	DESIGNATION
N/A	
SURVEY BOOK	SHEETS
	6 of 53
CONTRACT	PROJECT
	2023.02149