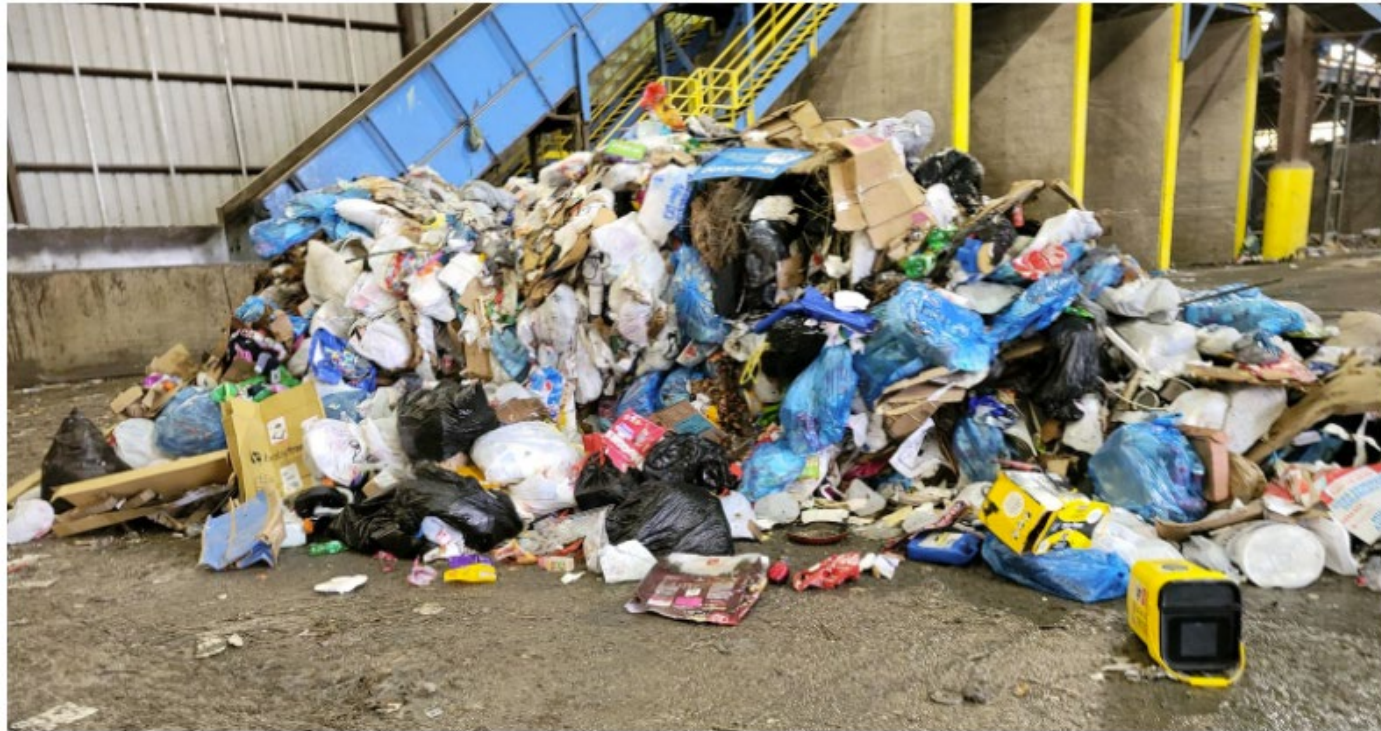


# MUNCIE RECYCLING PROGRAM UPDATE





**After 24 years, is this still the most efficient way to capture recyclables?**





This is what it looked like when we were previously collecting co-mingled recycling in blue bags in a trash truck.





This is what it looks like now when we pick up loose co-mingled recyclables in carts in recycling only trucks.



ee Indiana's waste and recycling infrastructure for municipal solid waste (MSW) collected approximately 8.8 million tons in 2019 with 76% being disposed of in landfills, 5% diverted to waste-to-energy, and 19% diverted through recycling. This recycling rate falls below the national rate of 32% calculated by U.S. Environmental Protection Agency (U.S. EPA), and the state's goal of 50% (IC 13-20-25-1). ”



## **DO THE BLUE: WITHOUT THE BLUE BAGS**

In the 24 years of doing a blue bag co-mingled recycling program, we haven't seen a large increase in our recycling percentages. We're also seeing more cardboard go to the landfill.

Here are some reasons why we are changing it:

- Increased collection of bulk corrugated cardboard
- Significantly reduce plastic bag use and waste
- Convenience for residents
- Establish better tracking and communication
- Less contamination in recyclables
- Collect more recyclables overall
- Potential Long-term savings on Tipping Fees
- It's better for our environment!



# The Age of Cardboard.....

## When someone sets cardboard on the curb it doesn't get recycled.



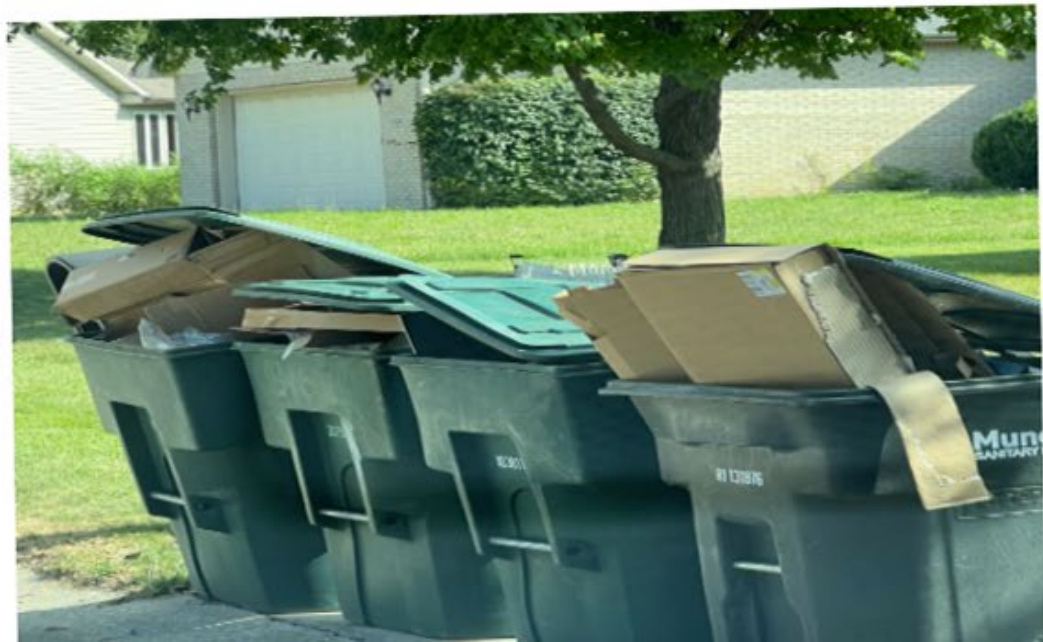
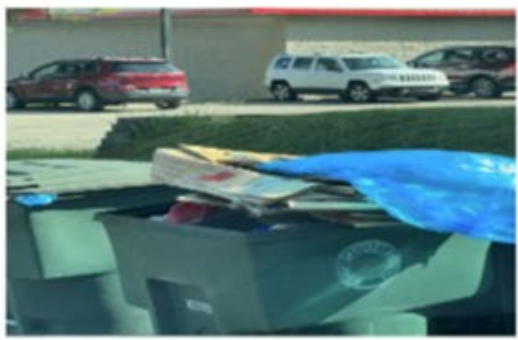
**Downtown Muncie Carboard Pile**

**Clean corrugated cardboard should never go to the landfill!**





# Pictures taken recently showing cardboard that is not being recycled properly... "the Amazon Effect"



Don't Place Boxes on the Curb



## Why Now? 3 Good Reasons...

---



1. MSD received a large grant from the Indiana Department of Environmental Management for \$468,798.00 to help supplement the purchase of 2 new 2023 CNG LaBrie Right Hand Automizer Recycling Trucks and 7k, 96-gallon blue recycling totes.
2. Recycling Program needs updated to reflect Indiana new recycling goal of 50% collection & address large increase in cardboard from "the Amazon Effect".
3. With Residents opting-in to receive a new recycling toter it will allows us to do more education & outreach, reduce contamination & wishcycling, & collect more data.



WE WERE AWARDED THE LARGEST 2023 GRANT AMOUNT IDEM'S RMDB!

**\$468,798.00**



Grant helps offset the cost of

2

Automated right hand LaBrie  
Compressed Natural Gas  
Recycling Trucks

7k

96-gallon blue recycling toters



**+ 50k** from the

**Recycling Partnership**



# IDEM DID A FEATURE ON US FOR THEIR SOCIAL MEDIA ACCOUNTS



Indiana Department of Environmental Management is in Indianapolis.

August 1 · 🌐



Thanks to #IDEM and a Recycling Market Development Program grant, Muncie Sanitary District delivered over 5,000 blue toters for recycling this week. This project will help make #recycling more accessible for the citizens of Muncie. Learn more about the Indiana Recycling Market Development Program here: [on.in.gov/IRMDP](https://on.in.gov/IRMDP)





# What will be collected...

## The Amazon Effect



Carboard ready to be recycled at East Central Recycling

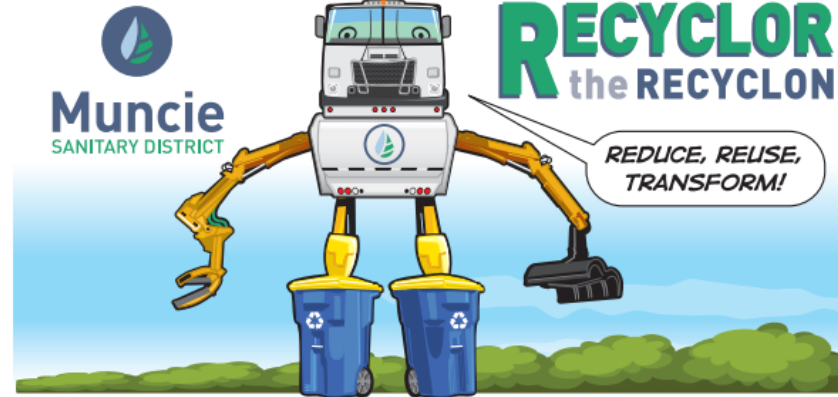


Plastic #1 ready to be recycled at East Central Recycling



Plastic #2 ready to be recycled at East Central Recycling





## RECYCLABLES

**Paper, Cardboard and Paperboard Boxes**  
(cereal, cracker boxes)



**Plastic Bottles, Jars and Jugs**  
#1, #2, #5  
(empty and dry)



**Aluminum, Tin and Steel Cans**  
(empty and dry)



**Glass Bottles and Jars**  
(empty and dry)



## NON-RECYCLABLES



Plastic Bags or Plastic Wraps



Do Not Bag Recyclables



No Cords, Hoses, or Chains



No batteries or electronics



No Food or Liquid (empty all containers)



No styrofoam or yard waste



# RECYCLING AT COMMUNITY EVENTS





Thank you for this opportunity & support!

Contact:

Jason Donati

Superintendent of Sanitation & Recycling

765-747-4865

[jdonati@msdeng.com](mailto:jdonati@msdeng.com)



**Muncie**

**SANITARY DISTRICT**