



IDEM's Role in Materials Management: Solid Waste and Recycling

IDEM provides the regulatory basis for environmental quality in the state and supports efforts to reduce waste, conserve resources, and pollute less.

Indiana legislation provides a framework for solid waste management planning in the state.

This includes:

- Permitting
- Data collection and reporting
- Creation of solid waste management districts (SWMDs)
- Provisions for education and technical assistance
- Establishment of Recycling Market Development and Community Recycling Grants

MMP Project Staff:

- Deanna Garner
- Tom Leas
- Jacob Schmicker
- Pat Daniel



IDEM Office of Program Support

Indiana State Materials Management Plan: Project Overview



01

Introductions

02

Project
Context

03

Project
Approach
and Timeline

04

Participation
Request

05

Next Steps

06

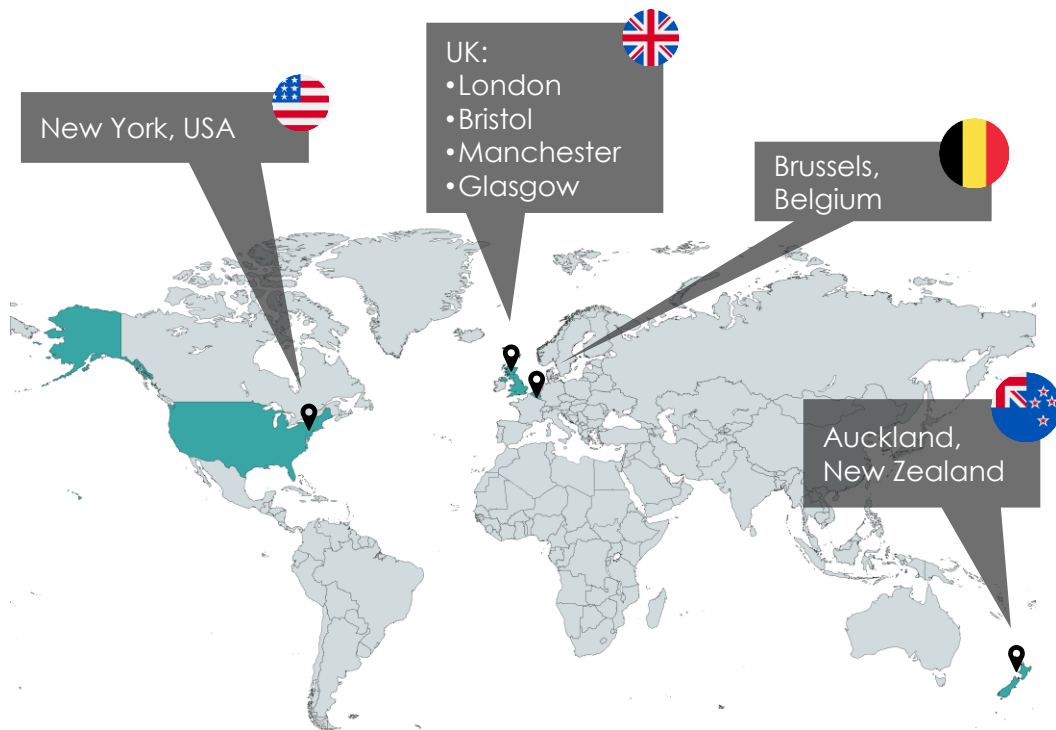
Q&A

Eunomia brings 23+ years of sustainability expertise



Eunomia is a certified B Corporation that has extensive experience supporting local, state, and regional governments to design, implement, and evaluate effective waste and recycling services aligned to the waste hierarchy and circular economy.

Eunomia was established in 2001 in the UK and has offices worldwide. Across the organization, Eunomia has over 140 consultants encompassing economists, policy experts, and organic material experts and life cycle assessors.



Eunomia is a trusted leader in circular economy



Policy Experts: Widely recognized global thought leaders in packaging, textiles, product policy, strategy, and operations - European Commission's primary advisor.



Global Insight: Access to circular economy and packaging design best practice data and insight from all corners of the world.



Cross-Sector Expertise: Proven ability to work with public and private clients across sectors on innovative, cost-effective solutions to the most pressing issues.



Unbiased Credibility: Recognized for giving unbiased, independent, data-driven advice, ensuring credibility and respect across public, private and NGO sectors.



Tool Expertise: Over 20 years development of sophisticated but user-friendly analytical and decision-support tools for solving our clients' problems.

Team of specialized experts to optimize project delivery



**SOLID WASTE
MANAGEMENT
CONSULTANTS**

- GBB (Gershman, Brickner & Bratton, Inc.) is an international solid waste management consulting firm and will support project research and inform the detailed planning and implementation strategies necessary for the practical aspects of waste management systems.
- Since 1980, GBB has been on the front lines planning and implementing integrated waste management programs designed to provide cost-effective services, protect the environment, and sustain natural resources.
- Having worked in almost every state since 1980 (including Indiana) and outside the United States, GBB is very familiar with the challenges that businesses and communities face and the innovative solutions implemented as they increasingly try to find solutions to manage the repetitive tide of solid waste effectively.



McFarland
PR & PUBLIC AFFAIRS

- McFarland PR & Public Affairs, Inc, founded in 2012 and based in Indiana, has considerable experience working with the State of Indiana.
- McFarland's expertise in strategic discovery, planning and outreach/engagement is critical in fostering community support, addressing public concerns, and ensuring transparent and effective communication throughout the project lifecycle.
- Provided successful full-service campaign delivery (research, strategic planning, creative, implementation management and measurement) for many initiatives over the years to state agencies including the Healthy Indiana Plan 2.0 (FSSA), the YES registry (IDOL) and the IOT Local Government Services (IOT) statewide campaigns. Provided research services for the Indiana Department of Child Services, the Auditor of State, the Indiana Department of Transportation and the Indiana Office of Technology.



01

Introductions

02

**Project
Context**

03

Project
Approach
and Timeline

04

Participation
Request

05

Next Steps

06

Q&A

EPA-funded materials management plan update

The U.S. Environmental Protection Agency (EPA) awarded IDEM a Solid Waste Infrastructure for Recycling (SWIFR) State and Territory Grant to develop a statewide materials management plan, focusing on waste reduction.

The SWIFR grant funding is provided by the Bipartisan Infrastructure Law which provides the largest EPA investment in recycling in 30 years to support National Recycling Strategy implementation and build a circular economy for all.

As part of the Investing in America agenda, this funding can be used to develop or update plans to advance post-consumer materials management, implement those plans, and to improve data collection efforts.



This plan will...

- Advance post-consumer materials management in Indiana
- Provide a strategy for the state to reach its goal of a fifty percent (50%) recycling rate
- Baseline current waste management strategies, gaps, and challenges
- Identify stakeholders who will play a role in meeting the objectives of the plan
- Promote economic growth in Indiana via waste management practices
- Assist local waste management districts with materials management and waste reduction

Materials in scope





01

Introductions

02

Project
Context

03

**Project
Approach
and Timeline**

04

Participation
Request

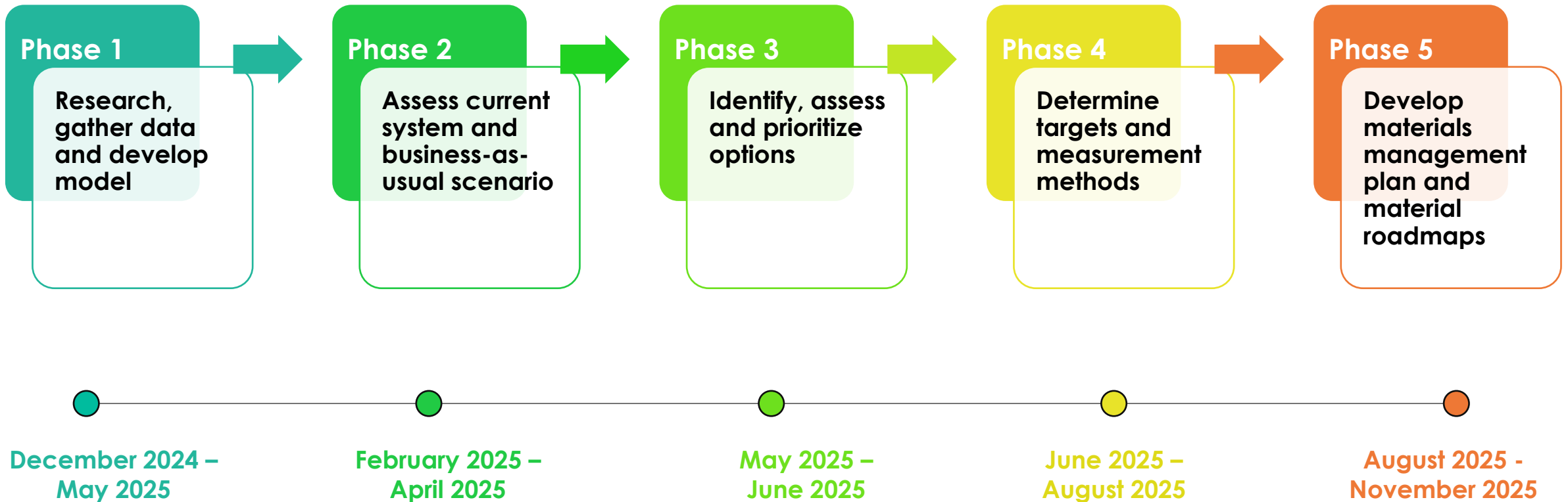
05

Next Steps

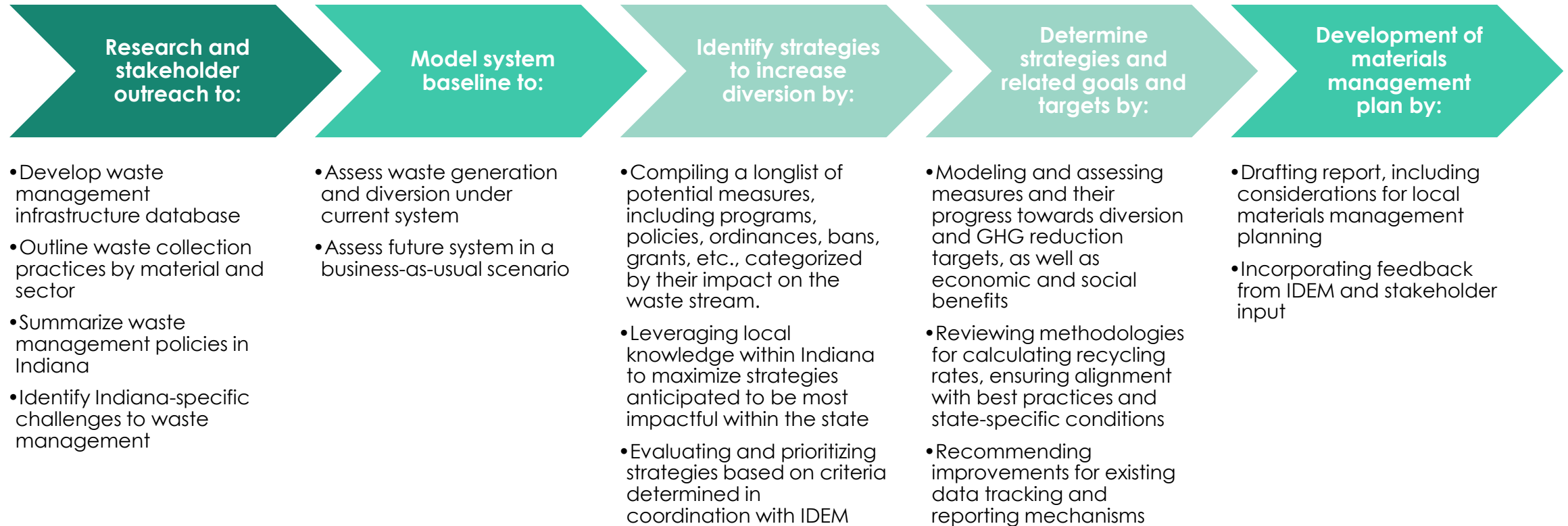
06

Q&A

Project timeline



Detailed project approach





01

Introductions

02

Project
Context

03

Project
Approach
and Timeline

04

**Participation
Request**

05

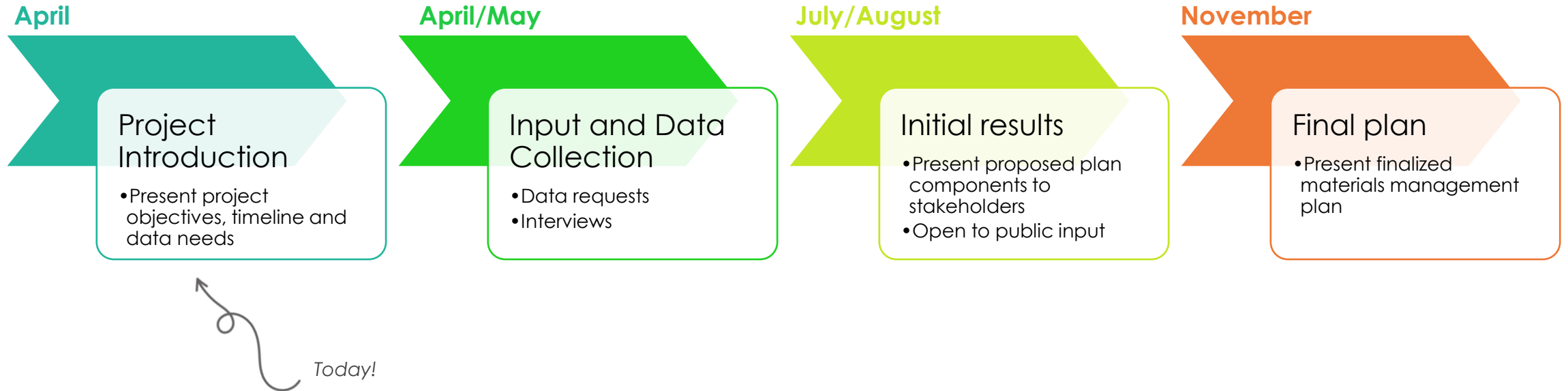
Next Steps

06

Q&A



A successful MMP relies on key stakeholder input



Areas of interest include, but are not limited to...



Data Needs from Stakeholders

Data Needs

Landfills

- **Sector Material Flows:** Proportion of landfilled waste that is commercial / ICI vs. residential sector
- **Waste Characterization:** Waste characterization study (or similar information) for the landfill stream

MRFs

- **Sector Material Flows:** Proportion of MRF stream that is commercial / ICI vs. residential sector
- **Capacity:** Permitted and operational capacity (tons / year)

C&D

- **Facility Locations:** Identifying which MRFs in Indiana accept C&D
- **C&D Recycling:** Proportion of C&D materials that is recycled, reused, or disposed
- **C&D Materials Accepted:** Information on the C&D materials that are currently targeted and recycled in the facilities
- **Additional C&D Recycling:** Additional C&D materials that facilities could recycle or reuse, given the right investment
- **Capacity:** Permitted and operational capacity (tons / year)

Composters

- **Yard Waste:** Information on how yard waste is currently being collected (residential and commercial)
- **Food Waste:** Understanding if composters can currently accept food waste
- **Barriers to Accepting Food Waste:** Information on any changes that composters would need to make in order to accept food waste (e.g., obtain required permitting and equipment)
- **Capacity:** Permitted and operational capacity (tons / year)

Textiles Recyclers / Collectors

- **Textiles Recycling:** Information on what happens to the collected textiles and where the materials are sent
- **Barriers to Textiles Recycling:** Information on the greatest constraints to accepting or processing more textiles



01

Introductions

02

Project
Context

03

Project
Approach
and Timeline

04

Participation
Request

05

Next Steps

06

Q&A



Next steps



Stakeholder outreach and interviews

Eunomia will reach out via email with questions and to schedule interviews with stakeholders as needed, prioritizing immediate data gaps.



Open call for data input

Any data or information you have and would like to share with Eunomia directly? Email MMP@idem.IN.gov to get in touch.



Monitor IDEM website for updates

The IDEM team will post updates and relevant links at www.in.gov/idem/recycle/



Additional questions?

Email MMP@idem.IN.gov with any additional questions.



Questions?





Thank You



About Eunomia

Eunomia is an independent sustainability consultancy driven by a genuine passion to make a positive change to the clients we work with and the communities they operate in. Founded in 2001, we have been pioneers in the sector - early advocates for helping NGOs as well as leading public and private sector organisations in the UK and overseas to adapt their approach and adopt more sustainable processes.

Our consultants are experts in the field, deeply immersed in the subject with the technical knowledge and skill to offer clients innovative, clear and practical recommendations. We are committed to finding solutions to better protect the planet, while supporting the wider aims and needs of our clients.

Each client is treated as an individual, with consultants taking the time to understand their objectives and how best we can support them. This personal service ensures a strong relationship is forged, based on honest and regular communication. It also ensures if these objectives change, there is the flexibility to adapt.

As an established leading independent consultancy, clients can have complete confidence that consultants will offer evidence-led solutions based on robust, impartial thinking that offer both pragmatic and positive outcomes.